





BAYER
ADVANCED



All-In-One

Lawn Weed & Crabgrass Killer¹

CONCENTRATE

**Kills even
Tough Weeds-
Roots & All**

*Mata las malezas más
resistentes, de raíz*



- **Won't harm lawns²**
- **Rainproof in 1 hour**



Kills 200+ Weeds

Always read and follow the label directions. For more information, visit Bayer.com. © 2011 Bayer HealthCare LLC. All rights reserved.

CAUTION

Keep out of reach of children. See back panel for directions.

Treats 5,000 sq ft
NET CONTENTS 32 FL OZ (946ml)

1 hour

Active Ingredients:

2,4-D, dimethylamine salt	4.85%
Quindorac	1.61%
Dicamba, dimethylamine salt	0.45%
Other Ingredients	93.09%
Total	100.00%

KEEP OUT OF REACH OF CHILDREN

CAUTION See back panel for additional
precautionary statements

†When used as directed

79491611 R:1

dallisgrass



Toughest weeds





rhizome



seeds



tubers



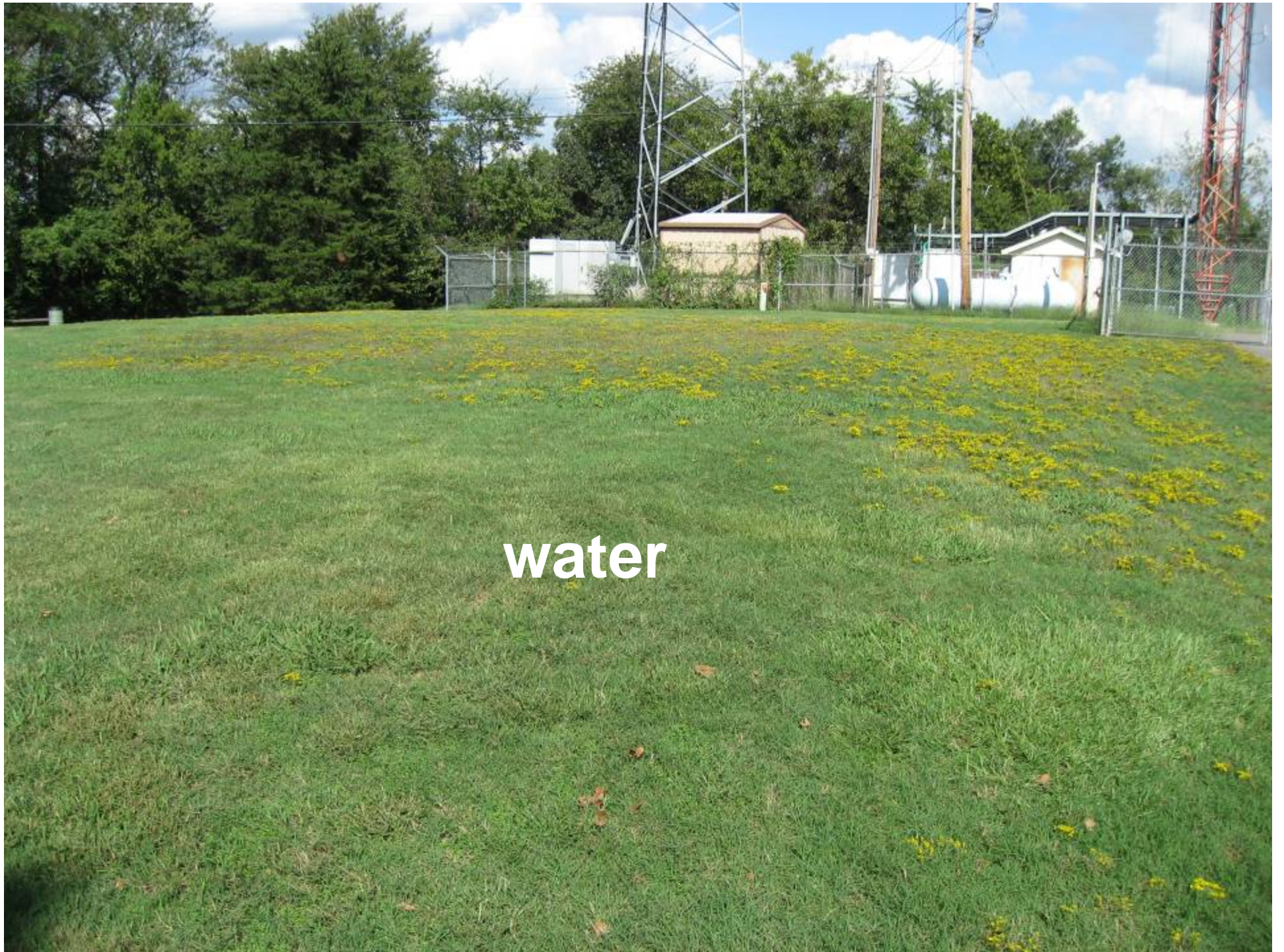
Purple Nutsedge



Virginia buttonweed

Violets





water



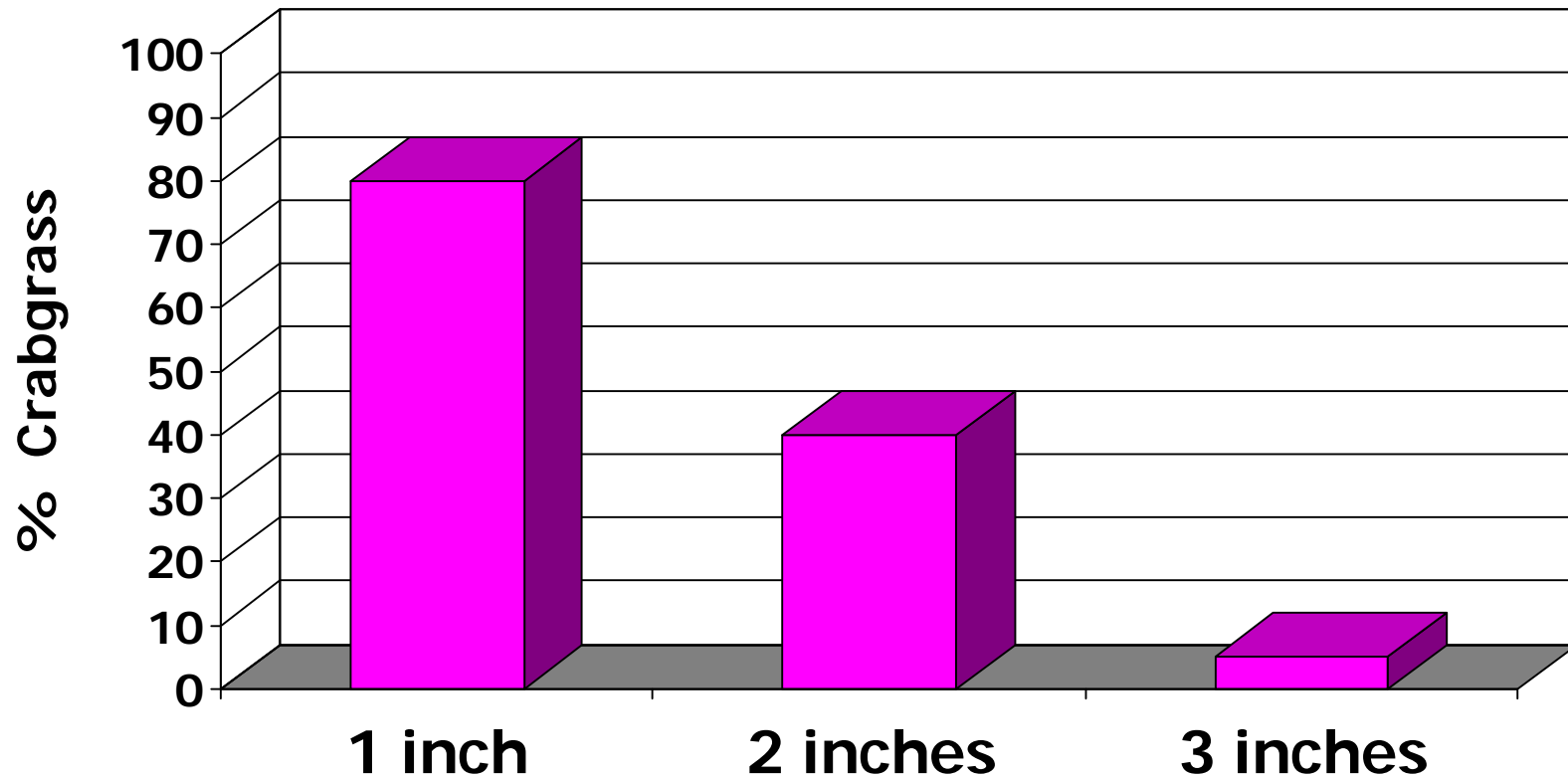
fertilizer

A man wearing a dark green t-shirt, khaki shorts, a black baseball cap, and glasses is pushing a red and black push mower on a green lawn. The lawn is situated in a landscaped area with a large tree trunk on the left and a concrete curb in the foreground. In the background, there are blue pipes, a white building, and a paved area. The word "Mowing" is written in white text across the center of the image.

Mowing

Use good maintenance practices including the correct mowing height.

Effect of Mowing Height on Crabgrass Infestation in Tall Fescue





Spurweed





Spurweed, lawn burweed

Red Deadnettle





Red Deadnettle



Henbit

Sticky Chickweed, mouse ear



Common Chickweed



seed

Carolina Geranium





Reduce mowing











Preemergence herbicides need to be watered in





Annual Bluegrass



August 15

Consumer crabgrass herbicides will contain one or more of these products...

Generic Name	Trade Names
Pendimethalin	Pendulum, Scotts Halts
Dithiopyr	Dimension
Oryzalin	Surflan
Trifluralin	Treflan
Trifluralin + Benefin	Team
Benefin	Balan
Prodiamine	Barricade



Active Ingredients:

2,4-D, dimethylamine salt	4.85%
Quindorac	1.61%
Dicamba, dimethylamine salt	0.45%
Other Ingredients	93.09%
Total	100.00%

KEEP OUT OF REACH OF CHILDREN

Lespedeza



- Low growing summer annual
- Tough, wiry, hairy stems from a tap root that produce a mat-like growth habit
- Can choke out thin turf
- Trifoliate leaves dark green
- Pink to purple flowers borne at the leaf axils

Broadleaf Weed Control

- Postemergence
 - 2,4-D
 - Dicamba
 - mecoprop
 - triclopyr



Lespedeza



Lespedeza





Professional version



ferti·lome®



Weed-Out® \$10⁹⁸

Lawn Weed Killer



Contains TRIMEC® Herbicide

- Kills troublesome lawn weeds
- Dandelion**
- Chickweed**
- Clover**
- and many others**

ACTIVE INGREDIENTS:	
**Dimethylamine Salt of 2-(2-methyl-4-chlorophenoxy) propionic acid	10.89%
*Dimethylamine Salt of 2,4-Dichlorophenoxyacetic acid	5.87%
**Dimethylamine Salt of Dicamba (3,6-dichloro-o-anisic acid)	1.29%
INERT INGREDIENTS:	82.04%
TOTAL	100.00%

This product contains:
 *0.78 lb. 2-(2-methyl-4-chlorophenoxy) propionic acid equivalent per gallon or 9.80%
 **0.42 lb. 2,4-Dichlorophenoxyacetic acid equivalent per gallon or 4.89%
 ***0.09 lb. 3,6-dichloro-o-anisic acid equivalent per gallon or 1.00% **Isomer Specific by AOAC Method 6.Dol-5

KEEP OUT OF REACH OF CHILDREN

Homeowner/Consumer version

Dry vs. Sprayed Broadleaf Control





yellow nutsedge



annual sedge



purple nutsedge



kyllinga

17.99

Sedge Hammer™

Herbicide by Gowan Company

For post-emergence control of nutsedge

How to identify mature yellow nutsedge



How to identify young nutsedge (Yellow and Purple)



SE

DISTINCTIVE MID-RIB

TRIANGULAR STEM

SEED HEAD

How to identify mature yellow nutsedge

How to identify young nutsedge (Yellow and Purple)

DISTINCTIVE MID-RIB

TRIANGULAR STEM

REPRODUCTIVE "NUTLETS"

REPRODUCTIVE "NUTLETS"

INSTRUCTIONS: (To treat 1000 square feet)

1. One water soluble bag per gallon of water.
2. Add 2 teaspoons nonionic surfactant.
3. Mix or shake at least two minutes.
4. Occasionally shake while spraying.

EPA Reg. # 81880-1-10163
EPA Est. N
Distributed
370 S. Main
Yuma, Ariz
Item No. 31
SEDG-06-1

ITEM: GW35721
DESC: SEDGEHAMMER HERB 30/ 9G BOX
UOM/PACK: 99 / 1 - 99



17.99

TURF HERBICIDE

SEGEHAMMER is a selective herbicide for the control of nutsedge and other weeds in turfgrass and landscaped areas.

	% by Wt.
ACTIVE INGREDIENT: *Halosulfuron-methyl	75.0%
OTHER INGREDIENTS:	25.0%
Total	100.0%

**KEEP OUT OF REACH OF CHILDREN
CAUTION**

Refer to enclosed booklet for complete Directions for Use

EPA Reg. No. 81880-1-10163
EPA Est. No. 065387-AR-003
Distributed by: Gowan Company
370 S. Main Street
Yuma, Arizona 85364
Item No. 36110
SEDG-06-R0705

Net Contents: 0.9 gram



Sulfentrazone/kyllinga













Emergence



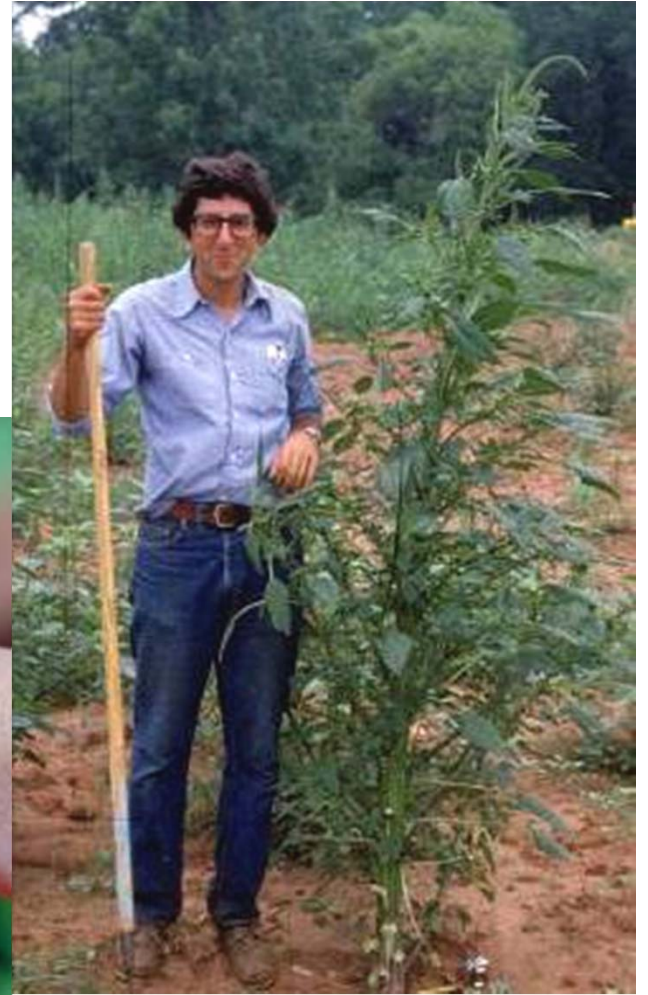
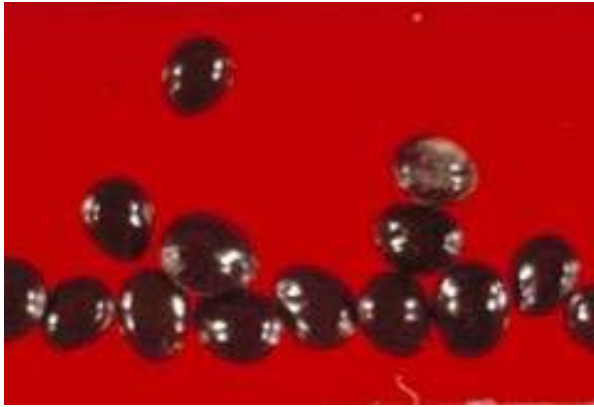
4 days later



9 days later



42 days later

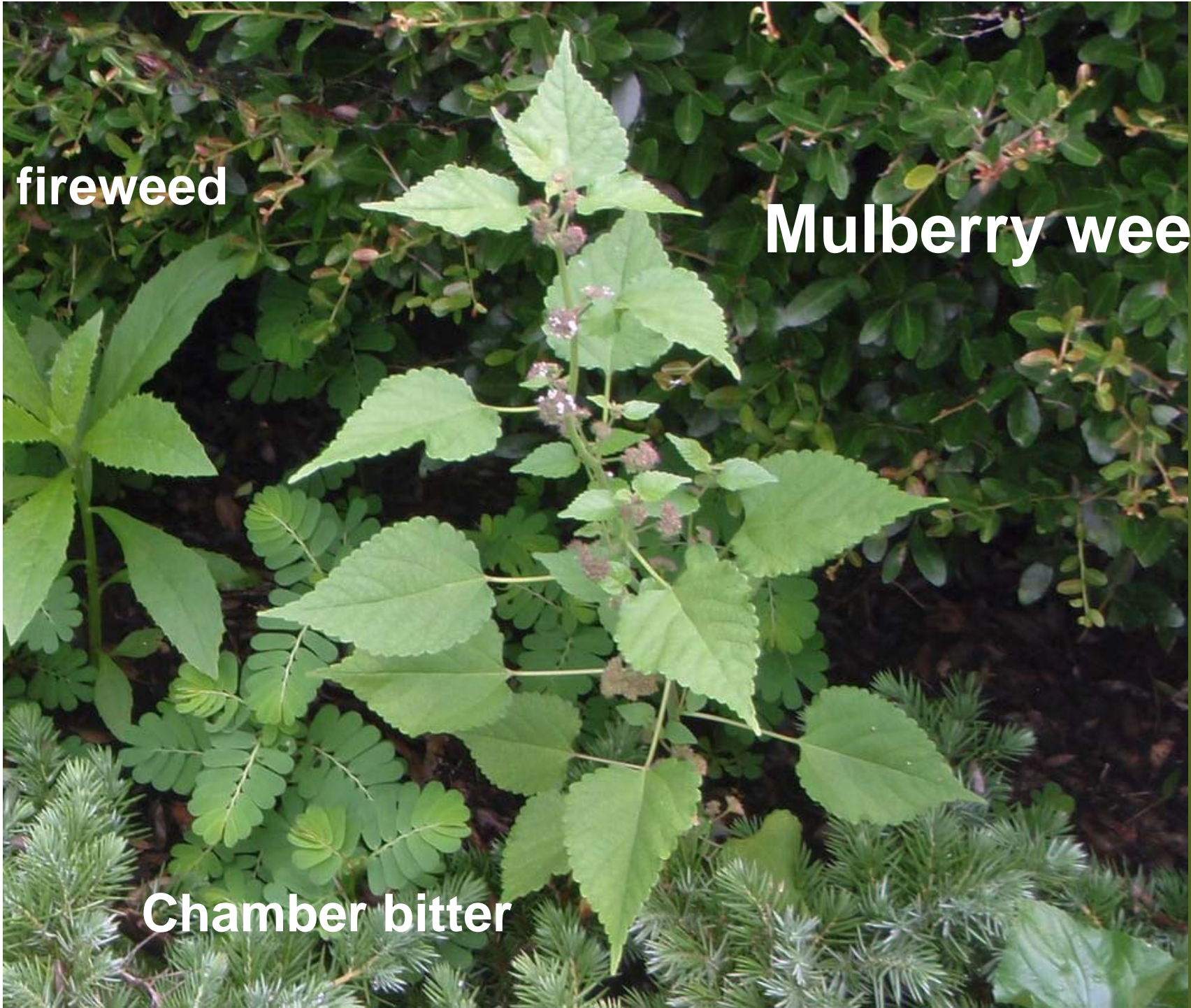




fireweed

Mulberry weed

Chamber bitter





Mulberry weed

Asiatic Hawksbeard





Youngia japonica



chamberbitter



chamberbitter





Virginia copperleaf, 3-seeded mercury



Virginia copperleaf, 3-seeded mercury



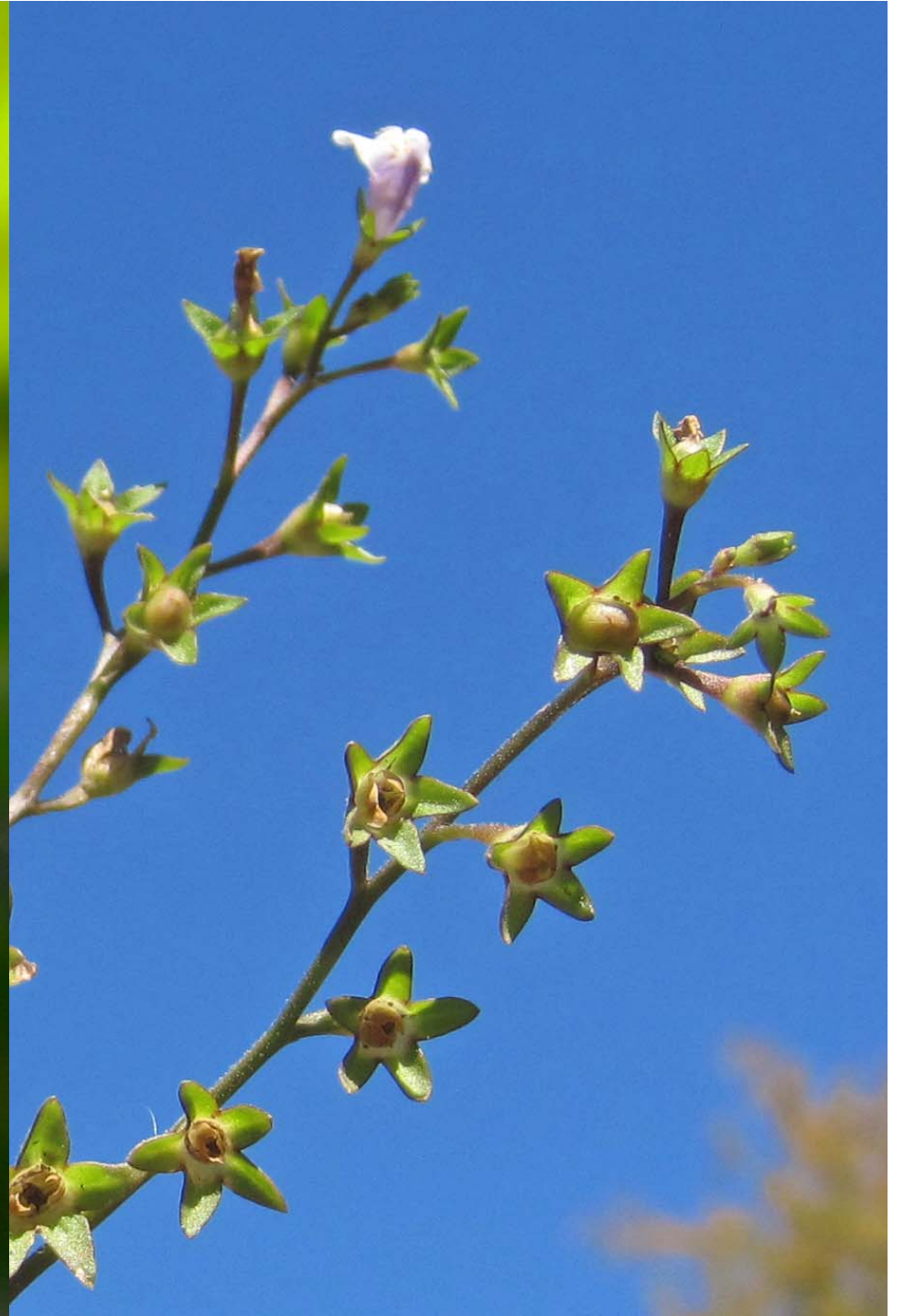


Prostrate Spurge – summer annual

Japanese Figwort









Common Yellow Woodsorrel

WILDFLOWERS of ARKANSAS

by
Carl G. Hunter

Ozark Society Foundation
Arkansas Game and Fish Commission

MP 169

Weeds

OF ARKANSAS

LAWNS • TURF • ROADSIDES • RECREATION AREAS
A Guide to Identification

COOPERATIVE EXTENSION SERVICE, University of Arkansas Division of Agriculture,
United States Department of Agriculture, and County Governments Cooperating



CD-ROM
INCLUDED

SECOND EDITION



Color Atlas of Turfgrass Weeds

A GUIDE TO WEED IDENTIFICATION
AND CONTROL STRATEGIES

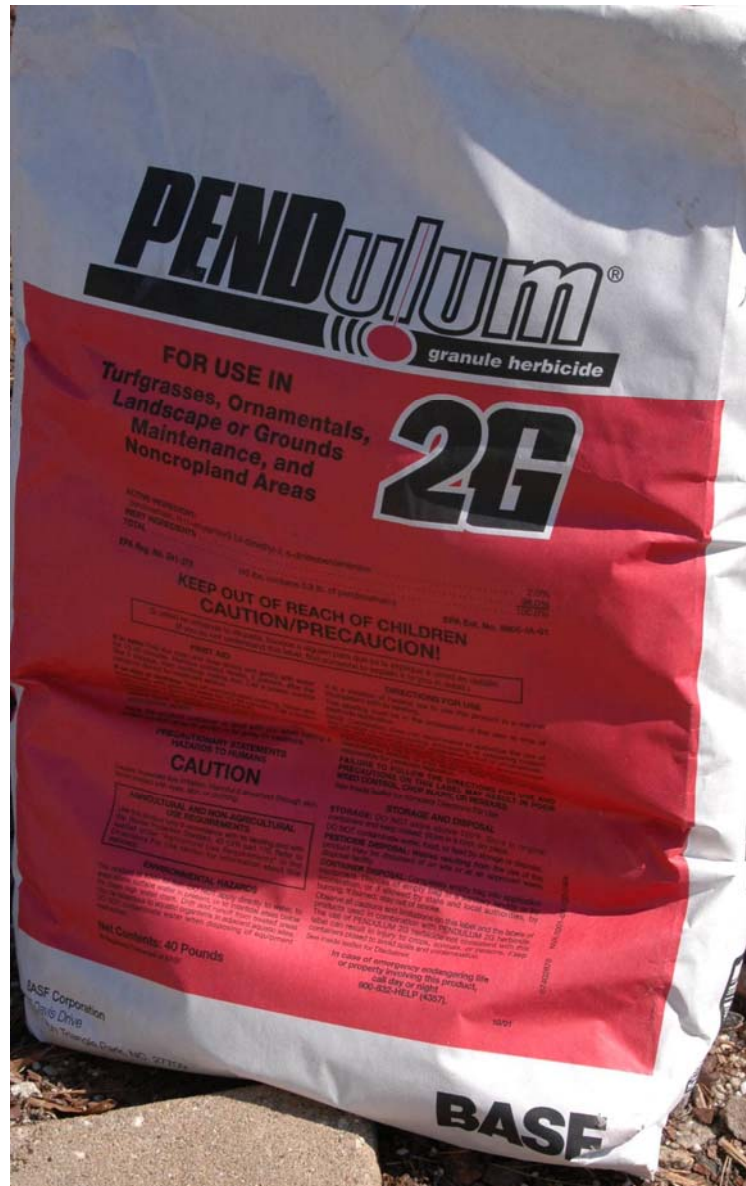
L. B. McCarty, John W. Everest, David W. Hall, Tim R. Murphy, Fred Yelverton

Preen (Treflan)



Common name: trifluralin

Pendulum 2G (pendimethalin)



Pansies and Pendulum Formulations



Pendulum granules



Pendulum sprayed over the top

Applying Granular Herbicides



A hand held rotary and a belly grinder.









mulch



New!

SCHULTZ

PREMIUM

Mulch
WITH
Weed Stop

Controls Weeds for UP TO 4 Months! (3mo)

The Easy Way to a Beautiful Landscape!
Can Be Spread Around Existing Flowers, Trees & Shrubs

SCHULTZ

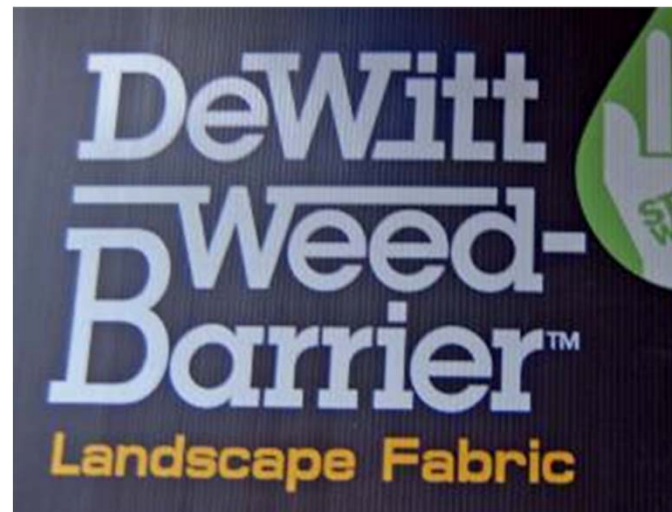
PREMIUM

Mulch *WITH* **Weed Stop**

UPC 01000 000000

PREMIUM Mulch *WITH* **Weed Stop**

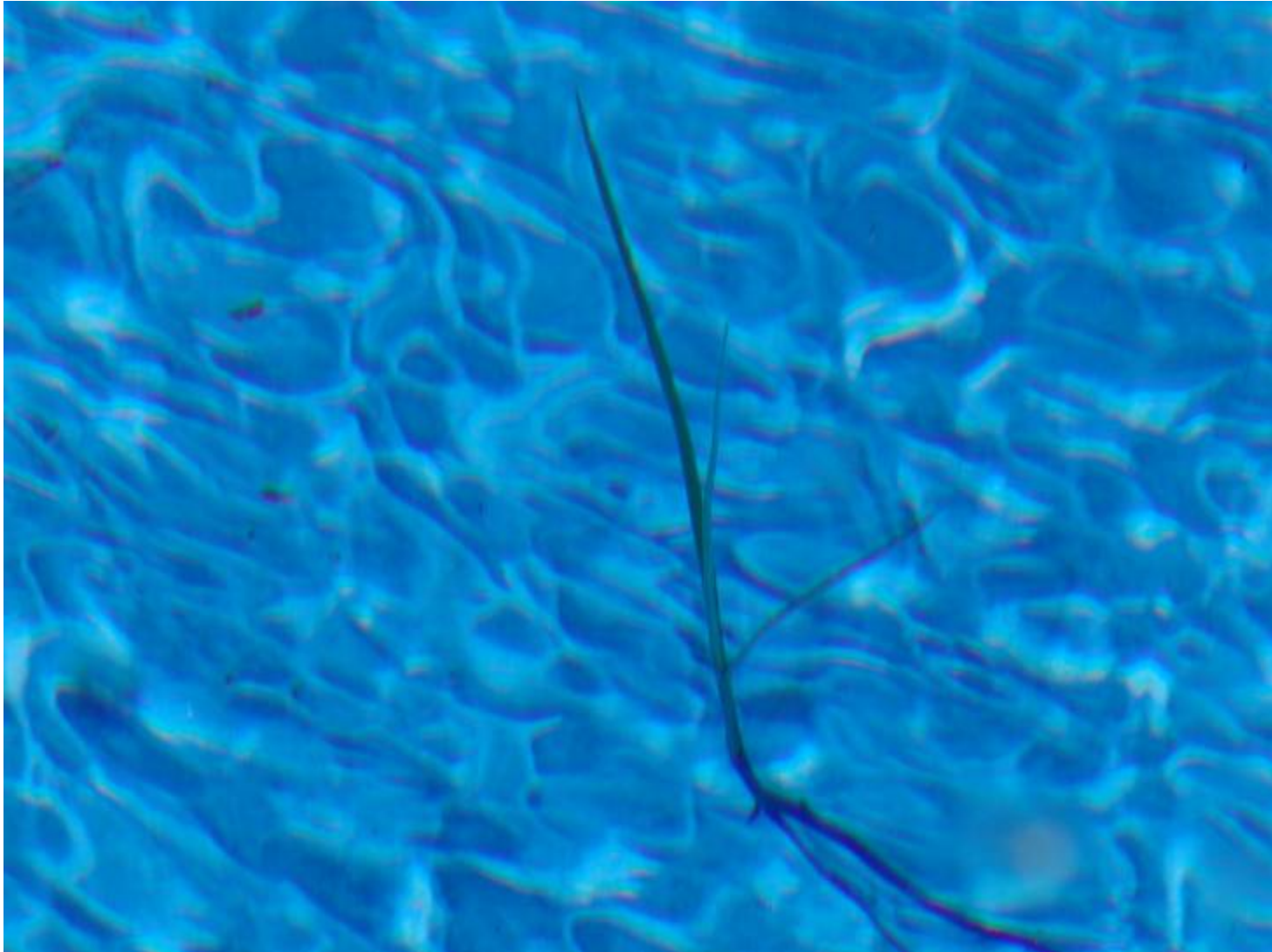






Nutsedge will grow through black plastic and woven polypropylene mulches.

Purple Nutsedge growing through a Swimming Pool



Nutsedge growing through asphalt



Purple Nutsedge in the Bedroom







Hi-Yield™

GRASS KILLER
Postemergence Grass Herbicide

- Systemic selective herbicide kills weedy grasses without injuring desirable plants.
- Controls: Bermudagrass, Crabgrass, Foxtails, Quackgrass and other weedy grasses.
- Concentrate makes 8 gallons of spray solution.

For use on and around Ornamental Groundcovers and Vegetables*
*See Crop Table List

ACTIVE INGREDIENT:	KEEP OUT OF REACH OF CHILDREN
Sethoxydim 2-[1-(ethoxymino)butyl]-5-[2-(ethylthio)propyl]-3-hydroxy-2-oxidoheptan-1-one**	WARNING/AUI30
.....18.0%	Si usted no entiende la etiqueta, busque a alguien para que se la explique a usted en detalle. (If you do not understand this label, find someone to explain it to you in detail.)
INERT INGREDIENTS:82.0%	
TOTAL:100.0%	

**Equivalent to 1.5 lbs per gallon

Net contents 8 fl. ozs.













Zoysiagrass encroaching





KILLS & PREVENTS FOR UP TO 4 Months!

Roundup

CONCENTRATE

EXTENDED CONTROL™

WEED & GRASS KILLER PLUS WEED PREVENTER


MATA MALEZAS Y GRAMA CON PREVENCIÓN DE MALEZAS

Keep Out Of Reach Of Children
CAUTION See back panel for additional precautionary statements.
 Mantener Fuera Del Alcance De Los Niños
PRECAUCIÓN Ver declaraciones adicionales de precaución en el reverso del pack.

Active ingredients:
 Glyphosate, isopropylamine salt ... 18.00%
 Trisect, ammonium salt ... 2.30%
 Liquid dicyclohexyl ... 6.70%
 Other ingredients ... 13.00%

NET 32 FL. OZ (1.0 QT)





**Roundup Only - 67
days after treatment**



**Roundp Extended
(Roundup + imazapic),
67 DAT**

Woody Plants





Woody sprouts are tough problem in beds. It is difficult to pull and remove the entire plant.



Cut stem treatment