

SOYBEAN INSECTICIDE PERFORMANCE RATING, 2025

| | Chemistry | Restricted Entry Interval (Hours) | Restricted Use (R) | Stem Feeders | | | Defoliators | | | | | | | | Defoliators and Pod Feeders | | | | Pod Feeders | | | |
|-----------------------------------|-----------|-----------------------------------|--------------------|--------------|-----------|------------------------------|----------------|----------------|-------------|------------------|-----------------------|----------------|----------------|-------------|-----------------------------|------------------|---------------|-----------------------------|--------------|-----------------|-----------------|----------------------|
| | | | | Cutworm | Kudzu Bug | Threecornered Alfalfa Hopper | Blister Beetle | Garden Webworm | Grasshopper | Green Cloverworm | Saltmarsh Caterpillar | Soybean Looper | Cabbage Looper | Spider Mite | Velvetbean Caterpillar | Bean Leaf Beetle | Beet Armyworm | Yellowstriped Fall Armyworm | Corn Earworm | Green Stink Bug | Brown Stink Bug | Red Banded Stink Bug |
| Admire/Imidacloprid | NEO | 12 | | | | | | | | | | | | | | | | | | 3 | 4 | 4 |
| Cruiser | NEO | 12 | | | | 7 | | | | | | | | | 5 | | | | | | | |
| Gaucho | NEO | 12 | | | | 5 | | | | | | | | | 5 | | | | | | | |
| Intego Suite | NEO | 12 | | | | 5 | | | | | | | | | 5 | | | | | | | |
| Agri-Mek | AV | 12 | X | | | | | | | | | | | 8 | | | | | | | | |
| Ambush/Pounce | SyP | 12 | X | | | 7 | 6 | 7 | 4 | 8 | 4 | 1 | 6 | 0 | 8 | 3 | 3 | 7 | 4 | 5 | 5 | |
| Asana XL/Adjourn | SyP | 12 | X | 8 | 6 | 8 | 8 | 8 | 7 | 9 | 5 | 1 | 8 | 0 | 9 | 3 | 3 | 7 | 4 | 7 | 5 | |
| <i>Bacillus thuringiensis</i> | B | 4 | | 0 | | 0 | 0 | 5 | 0 | 8 | 3 | 7 | 7 | 0 | 8 | 0 | 2 | 0 | 2 | 0 | 0 | |
| Baythroid XL | SyP | 12 | X | 8 | 6 | 8 | 8 | 8 | 6 | 9 | 5 | 3 | 8 | 0 | 9 | 3 | 3 | 7 | 4 | 7 | 5 | 5 |
| Belay | NEO | 12 | | | 6 | | | | | | | | | | 7 | | | | | 7 | 6 | 7 |
| Besiege | DM+SyP | 24 | X | 8 | 9 | 8 | 8 | 9 | 7 | 9 | 9 | 6 | 9 | | 9 | 5 | 9 | 9 | 9 | 7 | 5 | 5 |
| Blackhawk | SP | 4 | | 7 | 0 | 0 | 0 | 8 | 2 | 9 | 5 | 7 | 9 | 0 | 9 | 3 | 8 | 7 | 6 | 1 | 1 | |
| Brigade/Discipline/Fanfare | SyP | 12 | X | 9 | 9 | 9 | 8 | 7 | 7 | 9 | 6 | 3 | 8 | 8 | 9 | 7 | | 8 | 4 | 9 | 7 | 7 |
| Denim | AV | 12 | X | 7 | | | | | 2 | 9 | 3 | 8 | 8 | 5 | | | 9 | 8 | 7 | | | |
| Dimethoate | OP | 48 | | 0 | 6 | 6 | 5 | 5 | 7 | 3 | 1 | 2 | 2 | 4 | 3 | 8 | 2 | 4 | 2 | 8 | 4 | 3 |
| Elevest | SyP+DM | 12 | X | 9 | 9 | 9 | 8 | 9 | 7 | 9 | 9 | 6 | 9 | 8 | 9 | 7 | 9 | 9 | 9 | 9 | 7 | 7 |
| Endigo ZCX | NEO+SyP | 24 | X | 8 | 9 | 8 | 8 | 8 | 7 | 9 | 5 | 3 | 8 | 0 | 9 | 7 | 3 | 7 | 5 | 9 | 8 | 7 |
| Heligen | NPV | 4 | | | | | | | | | | | | | | | | | 7 | | | |
| Hero | SyP | 12 | X | 9 | 9 | 9 | 8 | 7 | 7 | 9 | 6 | 3 | 8 | 8 | 9 | 6 | | 8 | 4 | 9 | 8 | 6 |
| Intrepid | IGR | 4 | | | | | | 8 | | 8 | 9 | 5 | 8 | 0 | 8 | | 8 | 8 | 5 | | | |
| Intrepid Edge | IGR+SP | 4 | | | | | | | | 9 | 9 | 8 | 8 | | 8 | | 8 | 8 | 8 | | | |
| Karate/Silencer/Lambda-Cy/Warrior | SyP | 24 | X | 8 | 9 | 8 | 8 | 8 | 7 | 9 | 5 | 3 | 8 | 0 | 9 | 4 | 3 | 7 | 4 | 7 | 5 | 5 |
| Lannate 2.4 LV | Car | 48 | X | 2 | | 5 | 5 | 8 | 6 | 9 | 4 | 7 | 8 | 0 | 9 | 6 | 7 | 7 | 6 | 7 | 5 | |
| Leverage | NEO+SyP | 12 | X | 8 | 6 | 8 | 8 | 8 | 7 | 9 | 5 | 3 | 8 | 0 | 9 | 7 | 3 | 7 | 4 | 9 | 7 | 7 |
| Mustang Maxx/Respect | SyP | 12 | X | 8 | 8 | 8 | 8 | 8 | 7 | 9 | 5 | 3 | 8 | 0 | 9 | 5 | 3 | 7 | 4 | 7 | 6 | 5 |
| Orthene/Acephate | OP | 24 | X | | 6 | | | | 8 | | | | 7 | | 7 | | | | | 8 | 8 | 7 |
| Prevathon/Vantacor | DM | 4 | X | | | | | 9 | 8 | 9 | 9 | 6 | 9 | | 9 | | 9 | 9 | 9 | | | |
| Prolex/Declare | SyP | 24 | X | 8 | 7 | 8 | 7 | 8 | 7 | 9 | 5 | 3 | 8 | 0 | 9 | 4 | 3 | 7 | 4 | 7 | 5 | |
| Sevin | Car | 12 | | 5 | 6 | 3 | 8 | 3 | 7 | 8 | 5 | 1 | 1 | 0 | 8 | 7 | 3 | 6 | 6 | 5 | 4 | |
| Spear-LEP | GSO | 4 | | | | | | | | | | 4 | | | | | | 2 | 6 | | | |
| Steward | OX | 12 | | 9 | 0 | 0 | 0 | 8 | 0 | 9 | 5 | 8 | 9 | 0 | 4 | 2 | 8 | 8 | 8 | 1 | 1 | |

The performance ratings in the chart are for comparison purposes only and are not necessarily a measure of percent control.

SOYBEAN INSECT CONTROL

Equivalent Economic Threshold Conversion Between Drop Cloth and Sweepnet

| Insect | Sampling Method Used at Four Random Areas Per 40 Acres | | | |
|---|--|------------------|------------------|-------------------|
| | Drop Cloth | Sweepnet | | |
| | Number/5 Foot of Row | Number/25 Sweeps | Number/50 Sweeps | Number/100 Sweeps |
| Stink bugs – up to R6 growth stage | 5 | 9 | 18 | 36 |
| Stink bugs – R6 to R6.5 growth stage (DO NOT treat after R6.5.) | 10 | 18 | 36 | 72 |
| Red Banded stink bug – up through R6.5 (Raise threshold to 10 from R6.5-R7) (DO NOT treat after R7 if weather conditions are favorable.) | | 4 | 8 | 16 |
| Soybean looper, cabbage looper, velvetbean caterpillar, armyworm complex ¹ | 5 | 29 | 58 | 116 |
| Kudzu bug | 20 nymphs | 25 nymphs | 50 nymphs | 100 nymphs |

¹Threshold numbers in association with 40 percent defoliation before bloom and 25 percent after bloom. Number represents medium and large larvae.

CAUTION: Do not allow acephate applications to drift onto adjacent rice fields. Acephate/Orthene is not labelled on rice.

Corn Earworm Dynamic Threshold

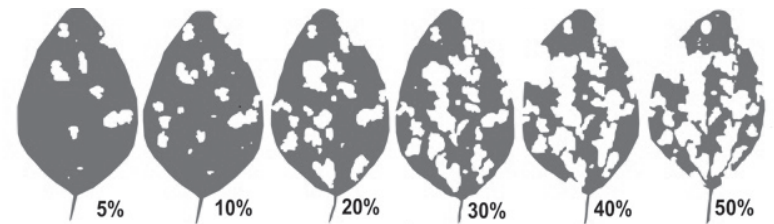
The tables below are the result of a collaborative research effort between five states in the Mid-South including three locations in Arkansas. To determine the treatment level, estimate the potential value of the crop and the cost of the insecticide application. For example; if the crop value is \$8/bushel and the cost of control is \$14/acre, the sweepnet threshold would be 8.6 earworm per 25 sweeps.

| Crop value (\$/bu) | Larvae/25 sweeps | | | | | | |
|--------------------|-------------------------|-----|-----|------|------|------|------|
| | Control costs (\$/acre) | | | | | | |
| | 8 | 10 | 12 | 14 | 16 | 18 | 20 |
| 6 | 6.5 | 8.2 | 9.8 | 11.4 | 13.1 | 14.7 | 16.3 |
| 7 | 5.6 | 7.0 | 8.4 | 9.8 | 11.2 | 12.6 | 14.0 |
| 8 | 5.0 | 6.1 | 7.4 | 8.6 | 9.8 | 11.0 | 12.3 |
| 9 | 5.0 | 5.4 | 6.5 | 7.6 | 8.7 | 9.8 | 10.9 |
| 10 | 5.0 | 5.0 | 5.9 | 6.9 | 7.8 | 8.8 | 9.8 |
| 12 | 5.0 | 5.0 | 5.0 | 5.7 | 6.5 | 7.4 | 8.2 |
| 13 | 5.0 | 5.0 | 5.0 | 5.3 | 6.0 | 6.8 | 7.5 |
| 15 | 5.0 | 5.0 | 5.0 | 5.0 | 5.2 | 5.9 | 6.5 |

| Crop value (\$/bu) | Larvae/row foot | | | | | | |
|--------------------|-------------------------|-----|-----|-----|-----|-----|-----|
| | Control costs (\$/acre) | | | | | | |
| | 8 | 10 | 12 | 14 | 16 | 18 | 20 |
| 6 | 0.9 | 1.1 | 1.3 | 1.5 | 1.7 | 2.0 | 2.2 |
| 7 | 0.7 | 0.9 | 1.1 | 1.3 | 1.5 | 1.7 | 1.9 |
| 8 | 0.7 | 0.8 | 1.0 | 1.1 | 1.3 | 1.5 | 1.6 |
| 9 | 0.6 | 0.7 | 0.9 | 1.0 | 1.2 | 1.3 | 1.4 |
| 10 | 0.6 | 0.7 | 0.8 | 0.9 | 1.0 | 1.2 | 1.3 |
| 12 | 0.6 | 0.6 | 0.7 | 0.8 | 0.9 | 1.0 | 1.1 |
| 13 | 0.6 | 0.6 | 0.6 | 0.7 | 0.8 | 0.9 | 1.0 |
| 15 | 0.6 | 0.6 | 0.6 | 0.6 | 0.7 | 0.8 | 0.9 |

| Equivalent Rates of Insecticides Containing Chlorantraniliprole | | | |
|---|-----------------------|---|---------|
| Product | Formulation lb ai/gal | Oz of chlorantraniliprole per acre equivalent | |
| Prevathon | 0.43 lb | 14 oz | 20 oz |
| Vantacor | 5 lb | 1.2 oz | 1.7 oz |
| Shenzi | 3.33 lb | 1.8 oz | 2.6 oz |
| Besiege | 0.835 lb | 7.2 oz | 10.3 oz |
| Elevest | 0.89 lb | 6.8 oz | 9.6 oz |

Defoliation Levels on Soybean Leaves



SOYBEAN INSECT CONTROL

| Insect | Insecticide | Formulation/Acre | Lb ai/Acre | Acres/Gallon | Application/Comments | Minimum Days From Last Application to Harvest | Restricted Entry Interval (REI) Hours |
|--|--|-----------------------------|-------------------|---------------------|---|--|--|
| Cutworm Treat when infestation threatens to reduce stand to less than 4-6 plants per row foot. | beta-cyfluthrin (R) Baythroid XL 1 EC | 0.8-1.6 oz | 0.007-0.013 | 80-160 | DO NOT apply more than 0.3 lb ai of Brigade per season. DO NOT apply again for 30 days. | 21 | 12 |
| | bifenthrin (R) Brigade 2 EC (See Generic Insecticides) | 2.1-6.4 oz | 0.033-0.1 | 20-61 | | 18 | 12 |
| | cyfluthrin (R) Tombstone 2 EC (See Generic Insecticides) | 0.8-1.6 oz | 0.013-0.025 | 80-160 | | 45 | 12 |
| | carbaryl Sevin XLR or 4F | 1.0-1.5 qt | 1.0-1.5 | 2.7-4.0 | | 21 | 12 |
| | esfenvalerate (R) Asana XL 0.66 EC (See Generic Insecticides) | 5.8-9.6 oz | 0.03-0.05 | 13-22 | | 21 | 12 |
| | gamma-cyhalothrin (R) Proaxis 0.5 CS Declare 1.25 CS | 1.92-3.2 oz 0.77-1.28 oz | 0.0075-0.0125 | 40-66.7 100-167 | | 45 | 24 |
| | lambda-cyhalothrin (R) Warrior II 2.08 CS (See Generic Insecticides) | 0.96-1.6 oz | 0.015-0.025 | 80-133 | | 30 | 24 |
| | indoxacarb Steward 1.25 SC | 5.6-11.3 oz | 0.055-0.11 | 11.5-22.8 | | 21 | 12 |
| | zeta-cypermethrin (R) Mustang Maxx 0.8 EC (See Generic Insecticides) | 1.28-4.0 oz | 0.008-0.025 | 32-100 | | 21 | 12 |
| Kudzu Bug Treat when 4 nymphs per row foot or 25 nymphs per 25 sweeps are found. | acephate (R) Orthene/Acephate 97 S | 0.75-1.0 lb | 0.73-0.97 | | | 14 | 24 |
| | bifenthrin (R) Brigade 2 EC (See Generic Insecticides) | 6.4 oz | 0.1 | 20 | | 18 | 12 |
| | lambda-cyhalothrin (R) Warrior II 2.08 CS (See Generic Insecticides) | 1.92 oz | 0.03 | 67 | | 30 | 24 |
| | gamma-cyhalothrin (R) Proaxis 0.5 CS Declare 1.25 CS | 3.2-3.84 oz 1.28-1.54 oz | 0.0125-0.015 | 40-66.7 83-100 | | 45 | 24 |
| | zeta-cypermethrin (R) Mustang Maxx 0.8 EC (See Generic Insecticides) | 4.0 oz | 0.025 | 32 | | 21 | 12 |
| | zeta-cypermethrin + bifenthrin (R) Hero 1.24 EC | 6.4-10.3 oz | 0.062-0.1 | 12.4-20 | DO NOT apply more than 0.4 lb ai of Hero per season. DO NOT apply again for 30 days. | 21 | 12 |

SOYBEAN INSECT CONTROL

| Insect | Insecticide | Formulation/Acre | Lb ai/Acre | Acres/Gallon | Application/Comments | Minimum Days From Last Application to Harvest | Restricted Entry Interval (REI) Hours | |
|---|---|---|-------------------|---------------------|--|---|--|----|
| Threecornered Alfalfa Hopper Economic damage is unlikely when plants are greater than 10" tall. Damage usually occurs when plants are less than 10" tall. Apply when 50% of the plants are girdled or if fewer than 4-6 un-girdled plants per row foot remain in conventional rows, 30" to 38" and hopper nymphs are still present. | beta-cyfluthrin (R) Baythroid XL 1 EC | 1.6-2.8 oz | 0.012-0.022 | 45-80 | | 21 | 12 | |
| | clothianidin Belay 2.13 EC | 3-6 oz | 0.05-0.1 | 21.3-42.7 | | 21 | 12 | |
| | cyfluthrin (R) Tombstone 2 EC <i>(See Generic Insecticides)</i> | 1.6-2.8 oz | 0.025-0.044 | 46-80 | | 45 | 12 | |
| | esfenvalerate (R) Asana XL 0.66 EC <i>(See Generic Insecticides)</i> | 5.8-9.6 oz | 0.03-0.05 | 13-22 | | 21 | 12 | |
| | gamma-cyhalothrin (R) Proaxis 0.5 CS Declare 1.25 CS | 1.92-3.2 oz 0.77-1.28 oz | 0.0075-0.0125 | 40-66.7 100-167 | | 45 | 24 | |
| | lambda-cyhalothrin (R) Warrior II 2.08 CS <i>(See Generic Insecticides)</i> | 0.96-1.6 oz | 0.015-0.025 | 80-133 | | 30 | 24 | |
| | imidacloprid Gaucho 600 Senator 600 Access 5 FS | 1.6 oz/100 lb seed 1.6 oz/100 lb seed 1.6 oz/100 lb seed | | | Seed treatment. DO NOT graze or feed livestock on forage or hay. | 12 | 12 | |
| | thiamethoxam Cruiser 5 FS Warden CX | 1.28 oz/100 lb seed 3.38 oz/100 lb seed | | | Seed treatment. | | 12 | |
| | zeta-cypermethrin (R) Mustang Maxx 0.8 EC <i>(See Generic Insecticides)</i> | 2.8-4.0 oz | 0.0175-0.025 | 32-45.7 | | 21 | 12 | |
| | zeta-cypermethrin + bifenthrin (R) Hero 1.24 EC | 4.0-10.3 oz | 0.04-0.1 | 12.4-32 | DO NOT apply more than 0.4 lb ai of Hero per season. DO NOT apply again for 30 days. | 21 | 12 | |
| | Blister Beetle Before bloom, treat when 40% defoliation occurs. After bloom, treat when 25% defoliation occurs. | beta-cyfluthrin (R) Baythroid XL 1 EC | 1.0-1.8 oz | 0.008-0.014 | 71-128 | | 21 | 12 |
| | | bifenthrin (R) Brigade 2 EC <i>(See Generic Insecticides)</i> | 2.1-6.4 oz | 0.033-0.1 | 20-61 | DO NOT apply more than 0.3 lb ai of Brigade per season. DO NOT apply again for 30 days. | 18 | 12 |
| carbaryl Sevin XLR or 4F | | 2 qt | 2 | 2 | | 21 | 12 | |
| cyfluthrin (R) Tombstone 2 EC <i>(See Generic Insecticides)</i> | | 1.6-2.8 oz | 0.025-0.044 | 45.7-80 | | 45 | 12 | |

SOYBEAN INSECT CONTROL

| Insect | Insecticide | Formulation/ Acre | Lb ai/Acre | Acres/Gallon | Application/Comments | Minimum Days From Last Application to Harvest | Restricted Entry Interval (REI) Hours |
|---|--|------------------------------|-------------------|-----------------------|--|--|--|
| Blister Beetle (cont.) Before bloom, treat when 40% defoliation occurs. After bloom, treat when 25% defoliation occurs. | gamma-cyhalothrin (R) Proaxis 0.5 CS | 1.92-3.2 oz | 0.0075-0.0125 | 40-66.7 | | 45 | 24 |
| | Declare 1.25 CS | 0.77-1.28 oz | | 100-167 | | 45 | 24 |
| | lambda-cyhalothrin (R) Warrior II 2.08 CS (See Generic Insecticides) | 0.96-1.6 oz 2.1-6.4 oz | 0.015-0.025 | 80-133 | DO NOT graze or feed hay to livestock. DO NOT exceed 20 fl oz per acre per season. | 30 | 24 |
| | zeta-cypermethrin (R) Mustang Maxx 0.8 EC (See Generic Insecticides) | 1.28-4.0 oz | 0.008-0.025 | 32-100 | | 21 | 12 |
| | zeta-cypermethrin + bifenthrin (R) Hero 1.24 EC | 4.0-10.3 oz | 0.04-0.1 | 12.4-32 | DO NOT apply more than 0.4 lb ai of Hero per season. DO NOT apply again for 30 days. | 21 | 12 |
| Defoliating Caterpillars (Garden Webworm, Green Cloverworm, Saltmarsh Caterpillar, Cabbage Looper, Velvetbean Caterpillar, Silver-Spotted Skipper) | acephate (R) Orthene/Acephate 90 S Orthene/Acephate 97 S | 0.83-1.1 lb 0.75-1.0 lb | 0.75-1.0 | | Acephate is not labeled for garden webworm, saltmarsh caterpillar or silver-spotted skipper. DO NOT apply more than 1.5 lb ai acephate per season. | 14 | 24 |
| | <i>Bacillus thuringiensis</i> | Check label. | | | | | 4 |
| | beta-cyfluthrin (R) Baythroid XL 1 EC | 1.8-2.4 oz | 0.014-0.019 | 53.3-71 | Rate can be dropped to 0.8 oz for green cloverworm. | 21 | 12 |
| | bifenthrin (R) Brigade 2 EC (See Generic Insecticides) | 2.1-6.4 oz | 0.033-0.1 | 20-61 | DO NOT apply more than 0.3 lb ai of Brigade per season. DO NOT apply again for 30 days. | 18 | 12 |
| | bifenthrin + chlorantraniliprole (R) Elevest 2.22 SC | 5.6-9.6 oz | 0.098-0.167 | 13.3-23 | | 18 | 12 |
| | carbaryl Sevin XLR or 4F | 2-3 pt | 1.0-1.5 | 2.7-4 | | 21 | 12 |
| | chlorantraniliprole Vantacor 5 SC Shenzi 400 SC | 1.2-2.5 oz 1.7-3.8 oz | 0.047-0.098 | 51-106.7 33.7-75.3 | Vantacor and Shenzi are is not labeled for silver-spotted skipper. | 1 | 4 |
| | cyfluthrin (R) Tombstone 2 EC (See Generic Insecticides) | 1.6-2.8 oz | 0.025-0.044 | 45.7-80 | | 45 | 12 |
| | emamectin benzoate Denim 0.16EC | 8-12 oz | 0.0078-0.0156 | 16-10.7 | | 28 | 48 |

SOYBEAN INSECT CONTROL

| Insect | Insecticide | Formulation/ Acre | Lb ai/Acre | Acres/ Gallon | Application/Comments | Minimum Days From Last Application to Harvest | Restricted Entry Interval (REI) Hours |
|--|--|------------------------------|-------------------|--------------------------|--|--|--|
| Defoliating Caterpillars (cont.) | esfenvalerate (R) Asana XL 0.66 EC (See Generic Insecticides) | 2.9-5.8 oz | 0.015-0.03 | 22-44 | For cabbage looper, raise rate to 5.8-9.6 oz Asana XL is not labeled for garden webworm or silver-spotted skipper. | 21 | 12 |
| | gamma-cyhalothrin (R) Proaxis 0.5 CS Declare 1.25 CS | 1.92-3.2 oz 0.77-1.28 oz | 0.0075-0.0125 | 40-66.7 100-167 | Higher rate of 1.28-1.54 oz/acre required for garden webworm and silver-spotted skipper. | 45 | 24 |
| | indoxacarb Steward 1.25 SC | 5.6-11.3 oz | 0.055-0.11 | 11.5-22.8 | Rate for green cloverworm, saltmarsh caterpillar and cabbage looper can be lowered to 4.6 oz Will provide suppression of velvetbean caterpillar. Steward is not labeled for silver-spotted skipper. | 21 | 12 |
| | lambda-cyhalothrin (R) Warrior II 2.08 CS (See Generic Insecticides) | 1.28-1.92 oz | 0.02-0.03 | 66.6-100 | For garden webworm and silver-spotted skipper, raise rate to 1.6-1.92 oz/acre. | 30 | 24 |
| | lambda-cyhalothrin + chlorantraniliprole (R) Besiege 1.25 | 6-10 oz | 0.06-0.1 | 13-21 | DO NOT graze or feed hay to livestock. DO NOT exceed 20 fl oz per acre per season. Use 8-10 oz for silver-spotted skippers. | 30 | 24 |
| | methomyl (R) Lannate 2.4 LV | 0.75-3 pt | 0.22-0.9 | 5.3-10.6 | Lannate is not labeled for garden webworm. | 14 | 48 |
| | methoxyfenozide Intrepid 2 F (See Generic Insecticides) | 4-8 oz | 0.0625-0.125 | 16-32 | Intrepid is not labeled for silver-spotted skipper. | 14 | 12 |
| | methoxyfenozide + spinetoram Intrepid Edge 3F | 4-6.4 | 0.0975-0.187 | 20-32 | DO NOT make more than 4 applications per year. | 28 | 4 |
| | permethrin (R) Ambush 2.0 E Pounce 25 W | 3.2-12.8 oz 3.2-12.8 oz | 0.05-0.2 | 20-40 | Use higher rates for garden webworm. Not labeled for silver-spotted skipper. | 60 | 12 |
| | spinosad Blackhawk | 1.1-2.2 oz | 0.025-0.05 | | Blackhawk is not labeled for garden webworm or silver-spotted skipper. Raise rate to 1.7-2.2 oz for saltmarsh caterpillar. DO NOT apply more than 8.3 oz of Blackhawk per year. DO NOT feed treated forage to meat or dairy animals. | 28 | 4 |
| | zeta-cypermethrin (R) Mustang Maxx 0.8 EC (See Generic Insecticides) | 2.8-4.0 oz | 0.0175-0.025 | 32-45.7 | For saltmarsh caterpillar and silver-spotted skipper, the rate can be lowered to 1.28 oz Raise rate to 3.2-4 oz for cabbage loopers. | 21 | 12 |
| | zeta-cypermethrin + bifenthrin (R) Hero 1.24 EC | 4.0-10.3 oz | 0.04-0.1 | 12.4-32 | DO NOT apply more than 0.4 lb ai of Hero per season. DO NOT apply again for 30 days. For green cloverworm and silver-spotted skipper, rate can be dropped to 2.6-6.1 oz. | 21 | 12 |

SOYBEAN INSECT CONTROL

| Insect | Insecticide | Formulation/Acre | Lb ai/Acre | Acres/Gallon | Application/Comments | Minimum Days From Last Application to Harvest | Restricted Entry Interval (REI) Hours |
|---|---|-----------------------------|-------------------|---------------------|---|--|--|
| Grasshopper Before bloom, treat when 40% defoliation occurs. After bloom, treat when 25% defoliation occurs. | beta-cyfluthrin (R) Baythroid XL 1 EC | 2.0-2.8 oz | 0.016-0.022 | 45-64 | | 21 | 12 |
| | bifenthrin (R) Brigade 2 EC <i>(See Generic Insecticides)</i> | 2.1-6.4 oz | 0.033-0.1 | 20-61 | DO NOT apply more than 0.3 lb ai of Brigade per season. DO NOT apply again for 30 days. | 18 | 12 |
| | bifenthrin + chlorantraniliprole (R) Elevest 2.22 SC | 4.8-9.6 oz | 0.084-0.167 | 13.3-26 | | 18 | 12 |
| | chlorantraniliprole Vantacor 5 SC Shenzi 400 SC | 0.7-1.7 oz 1-2.5 oz | 0.027-0.067 | 183-75 128-51.2 | Make no more than 4 applications per year. For best results, add MSO at 1% v/v. | 1 | 4 |
| | cyfluthrin (R) Tombstone 2 EC <i>(See Generic Insecticides)</i> | 2.0-2.8 oz | 0.031-0.044 | 68-80 | | 45 | 12 |
| | diflubenzuron (R) Dimilin 2L <i>(See Generic Insecticides)</i> | 2 oz | 0.031 | 64 | Apply Dimilin when majority of grasshoppers have reached the 2nd to 3rd nymphal stage. Dimilin is not effective against adults. | 21 | |
| | dimethoate Dimethoate 4 E | 1 pt | 0.5 | 8 | | 21 | 48 |
| | esfenvalerate (R) Asana XL 0.66 EC <i>(See Generic Insecticides)</i> | 5.8-9.6 oz | 0.03-0.05 | 13-22 | | 21 | 12 |
| | gamma-cyhalothrin (R) Proaxis 0.5 CS Declare 1.25 CS | 3.2-3.84 oz 1.28-1.54 oz | 0.0125-0.015 | 40-66.7 83-100 | | 45 45 | 24 24 |
| | lambda-cyhalothrin (R) Warrior II 2.08 CS <i>(See Generic Insecticides)</i> | 1.6-1.92 oz | 0.025-0.03 | 67-80 | | 30 | 24 |
| | lambda-cyhalothrin + chlorantraniliprole (R) Besiege 1.252 | 8.0-10.0 oz | 0.08-0.098 | 12.8-16 | DO NOT graze or feed hay to livestock. DO NOT exceed 20 fl oz per acre per season. | 30 | 24 |
| | zeta-cypermethrin (R) Mustang Maxx 0.8 EC <i>(See Generic Insecticides)</i> | 3.2-4.0 oz | 0.02-0.025 | 32-40 | | 21 | 12 |
| | zeta-cypermethrin + bifenthrin (R) Hero 1.24 EC | 2.6-6.1 oz | 0.025-0.06 | 21-49.2 | DO NOT apply more than 0.4 lb ai of Hero per season. DO NOT apply again for 30 days. | 21 | 12 |

SOYBEAN INSECT CONTROL

| Insect | Insecticide | Formulation/Acre | Lb ai/Acre | Acres/Gallon | Application/Comments | Minimum Days From Last Application to Harvest | Restricted Entry Interval (REI) Hours | |
|--|--|--|---------------|---------------------|---|---|---------------------------------------|----|
| Soybean Looper Before bloom, treat for 40% defoliation and loopers present. After bloom, treat for 25% defoliation plus 6-8 worms per row foot. Terminate treatment when soybeans reach R6.5 growth stage. | <i>Bacillus thuringiensis</i> | Check label. | | | <i>Bacillus thuringiensis</i> works effectively against insecticide-resistant or susceptible populations of soybean loopers and requires 3-4 days to kill larvae. | | 4 | |
| | bifenthrin + chlorantraniliprole (R) Elevest 2.22 SC | 5.6-9.6 oz | 0.098-0.167 | 13.3-23 | | 18 | 12 | |
| | chlorantraniliprole Vantacor 5 SC Shenzi 400 SC | 1.25-2.5 oz 1.7-3.8 oz | 0.047-0.067 | 107-51 75.3-33.7 | Make no more than 4 applications per year. For best results, add MSO at 1% v/v. In recent years, chlorantraniliprole has shown reduced efficacy and may result in poor control. | 1 | 4 | |
| | emamectin benzoate Denim 0.16 EC | 8-12 oz | 0.0078-0.0156 | 16-10.7 | | 28 | 48 | |
| | indoxacarb Steward 1.25 SC | 5.6-11.3 oz | 0.055-0.11 | 11.3-22.8 | | 21 | 12 | |
| | lambda-cyhalothrin + chlorantraniliprole (R) Besiege 1.252 | 10.0 oz | 0.098 | 12.8 | DO NOT graze or feed hay to livestock. DO NOT exceed 20 fl oz per acre per season. | 30 | 24 | |
| | methomyl (R) Lannate 2.4 LV | 1.5-3 pt | 0.45-0.9 | 2.7-5.3 | | 14 | 48 | |
| | methoxyfenozide Intrepid 2 F (See Generic Insecticides) | 4-8 oz | 0.0625-0.125 | 16-32 | In recent years, methoxyfenozide has shown reduced efficacy and may result in poor control. | 14 | 12 | |
| | methoxyfenozide + spinetoram Intrepid Edge 3F | 4-6.4 oz | 0.094-0.15 | 20-32 | DO NOT make more than 4 applications per year. | 28 | 4 | |
| | spinosad Blackhawk | 1.1-2.2 oz | 0.025-0.05 | | DO NOT apply more than 8.3 oz of Blackhawk per year. DO NOT feed forage to meat or dairy animals. | 28 | 4 | |
| | Spider Mites | abamectin Agri-Mek 0.7 S (See Generic Insecticides) | 1.75-3.5 oz | 0.01-0.019 | 36.6-73 | | 28 | 12 |
| | | bifenthrin (R) Brigade 2 EC (See Generic Insecticides) | 5.12-6.4 oz | 0.08-0.1 | 20-25 | DO NOT apply more than 0.3 lb ai of Brigade per season. DO NOT apply again for 30 days. | 18 | 12 |
| dimethoate Dimethoate 4 E | | 1 pt | 0.5 | 8 | | 21 | 48 | |
| Bean Leaf Beetle Before bloom, treat when 40% defoliation occurs. After bloom, treat when 25% defoliation occurs and beetles are present. Terminate treatment when soybeans reach R6.5 growth stage. Tank mixing different chemistries has been shown to increase control. | acephate (R) Orthene/Acephate 90 S Orthene/Acephate 97 S | 0.83-1.1 lb 0.75-1.0 lb | 0.75-1.0 | | DO NOT apply more than 1.5 lb ai of acephate per season. | 14 | 24 | |
| | beta-cyfluthrin (R) Baythroid XL 1 EC | 1.6-2.8 oz | 0.013-0.022 | 45.7-80 | | 21 | 12 | |
| | beta-cyfluthrin + imidacloprid (R) Leverage 360 | 2.8 oz | 0.066 | 45.7 | | 21 | 12 | |
| | bifenthrin (R) Brigade 2 EC (See Generic Insecticides) | 2.1-6.4 oz | 0.033-0.1 | 20-61 | DO NOT apply more than 0.3 lb ai of Brigade per season. DO NOT apply again for 30 days. | 18 | 12 | |

SOYBEAN INSECT CONTROL

| Insect | Insecticide | Formulation/Acre | Lb ai/Acre | Acres/Gallon | Application/Comments | Minimum Days From Last Application to Harvest | Restricted Entry Interval (REI) Hours | | |
|---|--|---|-------------------|---------------------|--|---|--|----|----|
| Bean Leaf Beetle (cont.) | carbaryl Sevin XLR or 4F | 1 pt | 0.5 | 8 | | 21 | 12 | | |
| | clothianidin Belay 2.13 | 3-6 oz | 0.05-0.11 | 21.3-42.7 | DO NOT apply Belay within 45 days after planting seed treated with neonicotinoid seed treatments (imidacloprid, thiamethoxam). DO NOT apply at intervals less than 7 days apart. DO NOT graze or feed forage to livestock. | 21 | 12 | | |
| | cyfluthrin (R) Tombstone 2 EC (See Generic Insecticides) | 1.6-2.8 oz | 0.025-0.044 | 45.7-80 | | 45 | 12 | | |
| | dimethoate Dimethoate 4 E | 1 pt | 0.5 | 8 | | 21 | 48 | | |
| | esfenvalerate (R) Asana XL 0.66 EC (See Generic Insecticides) | 5.8-9.6 oz | 0.03-0.05 | 13-22 | | 21 | 12 | | |
| | gamma-cyhalothrin (R) Proaxis 0.5 CS Declare 1.25 CS | 1.92-3.2 oz 0.77-1.28 oz | 0.0075-0.0125 | 40-66.7 100-167 | | 45 | 24 | | |
| | lambda-cyhalothrin (R) Warrior II 2.08 CS (See Generic Insecticides) | 0.96-1.6 oz | 0.015-0.025 | 80-133 | | 30 | 24 | | |
| | imidacloprid Gaucho 600 Axxcess 5 FS Senator 600 | 1.6 oz/100 lb seed 1.6 oz/100 lb seed 1.6 oz/100 lb seed | | | | Gaucho and Cruiser will suppress early-season bean leaf beetles. | 12 | | |
| | thiamethoxam Cruiser 5 FS Warden CX | 1.28 oz/100 lb seed 3.38 oz/100 lb seed | | | | | 12 | | |
| | methomyl (R) Lannate 2.4 LV | 1-1.5 pt | 0.3-0.45 | 5.3-8 | | 14 | 48 | | |
| | zeta-cypermethrin (R) Mustang Maxx 0.8 EC (See Generic Insecticides) | 2.8-4.0 oz | 0.0175-0.025 | 32-45.7 | | 21 | 12 | | |
| | zeta-cypermethrin + bifenthrin (R) Hero 1.24 EC | 4.0-10.3 oz | 0.04-0.1 | 12.4-32 | | DO NOT apply more than 0.4 lb ai of Hero per season. DO NOT apply again for 30 days. | 21 | 12 | |
| | Armyworm Complex (Yellowstriped, Fall and Beet Armyworm) | PYRETHROIDS (Baythroid, Brigade, Tombstone, Proaxis, Declare, Warrior, Mustang Maxx, Hero) are not effective against beet armyworm. DO NOT USE. | | | | | | | |
| | Before bloom, treat when 40% defoliation occurs and an active population. | beta-cyfluthrin (R) Baythroid XL 1 EC | 1.6-2.8 oz | 0.013-0.022 | | 45.7-80 | | 21 | 12 |
| | | bifenthrin (R) Brigade 2 EC (See Generic Insecticides) | 2.1-6.4 oz | 0.033-0.1 | | 20-61 | | 18 | 12 |
| | | bifenthrin + chlorantraniliprole (R) Elevest 2.22 S | 5.6-9.6 oz | 0.098-0.167 | | 22.8-13.3 | | 18 | 12 |
| chlorantraniliprole Vantacor 5 SC Shenzi 400 SC | | 1.2-2.5 oz 1.7-3.8 oz | 0.047-0.067 | 107-51 75.3-33.7 | | | 1 | 4 | |

SOYBEAN INSECT CONTROL

| Insect | Insecticide | Formulation/ Acre | Lb ai/Acre | Acres/ Gallon | Application/Comments | Minimum Days From Last Application to Harvest | Restricted Entry Interval (REI) Hours | |
|---|---|---|----------------------|---|--|--|---|--|
| Armyworm Complex (Yellowstriped, Fall and Beet Armyworm) (cont.) | cyfluthrin (R) Tombstone 2 EC <i>(See Generic Insecticides)</i> | 1.6-2.8 oz | 0.025-0.044 | 45.7-80 | | 45 | 12 | |
| | emamectin benzoate (R) Denim 0.16 EC | 8-12 oz | 0.0078-0.0156 | 16-10.7 | For beet armyworm lower rate range to 6-8 oz. | 28 | 48 | |
| | gamma-cyhalothrin (R) Proaxis 0.5 CS Declare 1.25 CS | 3.2-3.84 oz 1.28-1.54 oz | 0.0125-0.015 | 40-33.3 83-100 | | 45 | 24 | |
| | lambda-cyhalothrin (R) Warrior II 2.08 CS <i>(See Generic Insecticides)</i> | 1.6-1.92 oz | 0.025-0.03 | 69-83 | | 30 | 24 | |
| | lambda-cyhalothrin + chlorantraniliprole (R) Besiege 1.252 | 8.0-10.0 oz | 0.08-0.098 | 12.8-16 | DO NOT graze or feed hay to livestock. DO NOT exceed 20 fl oz per acre per season. | 30 | 24 | |
| | indoxacarb Steward 1.25 SC | 4.6-11.3 oz | 0.045-0.11 | 11.3-27.8 | | 21 | 12 | |
| | methomyl (R) Lannate 2.4 LV | 1-1.5 pt | 0.3-0.45 | 5.3-8 | | 14 | 48 | |
| | methoxyfenozide Intrepid 2 F <i>(See Generic Insecticides)</i> | 4-8 oz | 0.0625-0.125 | 16-32 | | 14 | 12 | |
| | methoxyfenozide + spinetoram Intrepid Edge 3F | 4-6.4 | 0.094-0.15 | 20-32 | DO NOT make more than 4 applications per year. | 28 | 4 | |
| | spinosad Blackhawk | 1.67-3.3 oz | 0.038-0.075 | | DO NOT apply more than 8.3 oz of Blackhawk per year. DO NOT feed treated forage to meat or dairy animals. | 28 | 4 | |
| | zeta-cypermethrin (R) Mustang Maxx 0.8 EC <i>(See Generic Insecticides)</i> | 3.2-4.0 oz | 0.02-0.025 | 32-40 | | 21 | 12 | |
| | zeta-cypermethrin + bifenthrin (R) Hero 1.24 EC | 4.0-10.3 oz | 0.04-0.1 | 12.4-32 | DO NOT apply more than 0.4 lb ai of Hero per season. DO NOT apply again for 30 days. | 21 | 12 | |
| | Fire Ant (Red Imported, Black Imported and hybrid) | Fire ant colonies are often concentrated near field edges and fire ant foraging distance tends to be greater in soybean fields than other sites such as pastures and turf. Trials using outside perimeter and turnrow fire ant bait applications have demonstrated significant reduction in fire ant abundance within soybean fields. | | | | | | |
| | | Fire ant foraging is reduced when soil temperature is below 60 °F. To confirm fire ants are actively foraging place small pieces of hot dogs in areas you plan on treating. If after 30 minutes the hot dog pieces are covered by fire ants, fire ants are foraging and will pick up the fire ant bait. | | | | | | |
| | | Accurate fire ant bait applications using ground equipment are best achieved using a Herd® GT-77 fire ant bait applicator attached to an ATV. | | | | | | |
| Extinguish Plus Fire Ant Bait (0.365% hydramethylnon and 0.25% (S)-methoprene) | | 1.5 lbs | 0.005 h 0.004 (S) | 0.75 | Outside perimeter and turnrows ONLY. Do not apply Extinguish Plus within the field. Do not apply if rain is anticipated within 6 hours. | N/A | 12 | |
| Extinguish Professional Fire ant Bait (0.5% (S)-methoprene) | | 1-1.5 lbs | 0.005- 0.0075 | 0.75-1.0 | Within field and outside perimeter and turnrow application. Do not apply if rain is anticipated within 6 hours. Do not irrigate treated fields for 24 hours after application. | 0 | 4 | |
| Esteem Ant Bait (0.50% pyriproxyfen) | 1.5-2.0 lbs | 0.0075-0.01 | 0.5-0.75 | Within field applications and outside perimeter and turnrow application. Do not apply if rain is anticipated within 2-4 hours. Do not irrigate treated fields for 24 hours after application. | 24 | 12 | | |

SOYBEAN INSECT CONTROL

| Insect | Insecticide | Formulation/Acre | Lb ai/Acre | Acres/ Gallon | Application/Comments | Minimum Days From Last Application to Harvest | Restricted Entry Interval (REI) Hours |
|---|---|-----------------------------|---|---------------------|--|--|---|
| Corn Earworm and Tobacco Budworm Before bloom, treat when 40% defoliation occurs. After bloom, use threshold table. | Synthetic Pyrethroids | | In recent years, pyrethroids have shown reduced efficacy and can be expected to provide poor to moderate control. Consider tank-mixing another chemistry when using a pyrethroid. | | | | |
| | beta-cyfluthrin (R) Baythroid XL 1 EC | 1.6-2.8 oz | 0.013-0.022 | 45.7-80 | DO NOT use synthetic pyrethroids on populations of tobacco budworm. Tobacco budworm is resistant to this chemistry. | 21 | 12 |
| | bifenthrin (R) Brigade 2 EC <i>(See Generic Insecticides)</i> | 2.1-6.4 oz | 0.033-0.1 | 20-61 | DO NOT apply more than 0.3 lb ai of Brigade per season. DO NOT apply again for 30 days. | 18 | 12 |
| | cyfluthrin (R) Tombstone 2 EC <i>(See Generic Insecticides)</i> | 1.6-2.8 oz | 0.025-0.044 | 45.7-80 | | 45 | 12 |
| | gamma-cyhalothrin (R) Proaxis 0.5 CS Declare 1.25 CS | 1.92-3.2 oz 0.77-1.28 oz | 0.0075-0.0125 | 40-66.7 100-166 | | 45 | 24 |
| | lambda-cyhalothrin (R) Warrior II 2.08 CS <i>(See Generic Insecticides)</i> | 1.28-1.92 oz | 0.02-0.03 | 67-100 | | 30 | 24 |
| | esfenvalerate (R) Asana XL 0.66 EC <i>(See Generic Insecticides)</i> | 5.8-9.6 oz | 0.03-0.05 | 13-22 | | 21 | 12 |
| | permethrin (R) Ambush 2.0 E Pounce 25 W | 6.4-12.8 oz 6.4-12.8 oz | 0.1-0.2 | 10-20 | Permethrin: DO NOT graze treated areas or harvest for forage or hay. DO NOT make more than 2 applications per season. | 60 | 12 |
| | zeta-cypermethrin (R) Mustang Maxx 0.8 EC <i>(See Generic Insecticides)</i> | 2.8-4.0 oz | 0.0175-0.025 | 32-45.7 | | 21 | 12 |
| | zeta-cypermethrin + bifenthrin (R) Hero 1.24 EC | 4.0-10.3 oz | 0.04-0.1 | 12.4-32 | DO NOT apply more than 0.4 lb ai of Hero per season. DO NOT apply again for 30 days. | 21 | 12 |
| | Carbamates | | | | | | |
| | carbaryl Sevin XLR or 4F | 1-3 pt | 0.5-1.5 | 2.7-8 | | 21 | 12 |
| | methomyl (R) Lannate 2.4 LV | 0.75-1.5 pt | 0.225-0.45 | 5.3-10.7 | | 14 | 48 |
| | Other Chemistry | | | | | | |
| | nucleopolyhedrovirus Heligen | 1-1.6 oz | | 80-128 | Apply before reaching economic threshold targeting small larvae. Applications to large larvae often result in poor control. Larvae stop feeding within 1-3 days and die within 3-9 days. Refer to publication AG1306 for more information. | 0 | 4 |
| | bifenthrin + chlorantraniliprole (R) Elevest 2.22 SC | 5.6-9.6 oz | 0.098-0.167 | 13.3-23 | | 18 | 12 |
| | chlorantraniliprole Vantacor 5 SC Shenzi 400 SC | 1.2-2.5 oz 1.7-3.8 oz | 0.047-0.067 | 107-51 75.3-33.7 | Make no more than 4 applications per year. | 1 | 4 |
| | GS-omega/kappa-Htx-Hv1a Spear-LEP 0.17 | 1-2 pts | 0.021-0.042 | 8-4 | Apply in a minimum of 20 gpa by ground or 5 gpa by air. | 0 | 4 |

SOYBEAN INSECT CONTROL

| Insect | Insecticide | Formulation/Acre | Lb ai/Acre | Acres/Gallon | Application/Comments | Minimum Days From Last Application to Harvest | Restricted Entry Interval (REI) Hours |
|--|---|--|-------------------|---------------------|--|--|--|
| Corn Earworm and Tobacco Budworm (cont.) | Other Chemistry emamectin benzoate Denim 0.16 EC | 8-12 oz | 0.0078- 0.0156 | 16-10.7 | | 28 | 48 |
| | indoxacarb Steward 1.25 SC | 5.6-11.3 oz | 0.055-0.11 | 11.5-22.8 | | 21 | 12 |
| | lambda-cyhalothrin + chlorantraniliprole (R) Besiege 1.252 | 8.0-10.0 oz | 0.08-0.098 | 12.8-16 | DO NOT graze or feed hay to livestock. DO NOT exceed 20 fl oz per acre per season. | 30 | 24 |
| | methoxyfenozide + spinetoram Intrepid Edge 3F | 4-6.4 | 0.094-0.15 | 20-32 | DO NOT make more than 4 applications per year. | 28 | 4 |
| | spinosad Blackhawk | 1.67-2.2 oz | 0.038-0.05 | | DO NOT apply more than 8.3 oz of Blackhawk per year. DO NOT feed treated forage to meat or dairy animals. | 28 | 4 |
| ROOT FEEDER Grape Colaspis | chlothianidin Intego Suite | 3.37 oz/100 lb seed | | | | | |
| | imidacloprid Gaucho 600 Access 5 FS Senator 600 | 1.6 oz/100 lb seed 1.6 oz/100 lb seed 1.6 oz/100 lb seed | | | A seed treatment can be beneficial in areas where grape colaspis has historically been a problem. | | 12 |
| | thiamethoxam Cruiser 5 FS Warden CX | 1.28 oz/100 lb seed 3.2 oz/100 lb seed | | | | | 12 |
| | | | | | | | |
| Green Stink Bug, Southern Green Stink Bug, Red Shouldered Stink Bug Treat when an average of 1 stink bug per row foot is found using a shake sheet or 9 stink bugs per 25 sweeps up to R6 growth stage. Double threshold (18 per 25 sweeps) from R6 to R6.5 growth stage and terminate sprays after R6.5, keeping application-to-harvest interval restrictions in mind. | acephate (R) Orthene/Acephate 90 S Orthene/Acephate 97 S | 0.56-1.1 lb 0.50-1.0 lb | 0.5-1.0 | | DO NOT apply more than 1.5 lb ai acephate per season. | 14 | 24 |
| | beta-cyfluthrin (R) Baythroid XL 1 EC | 1.5-2.8 oz | 0.013-0.022 | 45.7-80 | | 21 | 12 |
| | beta-cyfluthrin + imidacloprid (R) Leverage 360 | 2.8 oz | 0.066 | 45.7 | | 21 | 12 |
| | bifenthrin (R) Brigade 2 EC (See Generic Insecticides) | 2.1-6.4 oz | 0.033-0.1 | 20-61 | DO NOT apply more than 0.3 lb ai of Brigade per season. DO NOT apply again for 30 days. | 18 | 12 |
| | bifenthrin + chlorantraniliprole (R) Elevest 2.22 SC | 5.6-9.6 oz | 0.098-0.167 | 13.3-23 | | 18 | 12 |
| | clothianidin Belay 2.13 | 3-6 oz | 0.05-0.1 | 21.3-42.7 | DO NOT apply Belay treatments less than 7 days apart. DO NOT apply more than 12 oz per acre. | 21 | 12 |
| | cyfluthrin (R) Tombstone 2 EC (See Generic Insecticides) | 1.6-2.8 oz | 0.025-0.044 | 45.7-80 | | 45 | 12 |
| | esfenvalerate (R) Asana XL 0.66 EC (See Generic Insecticides) | 5.8-9.6 oz | 0.03-0.05 | 13-22 | | 21 | 12 |
| | | | | | | | |

SOYBEAN INSECT CONTROL

| Insect | Insecticide | Formulation/Acre | Lb ai/Acre | Acres/Gallon | Application/Comments | Minimum Days From Last Application to Harvest | Restricted Entry Interval (REI) Hours |
|---|---|---------------------------|-------------------|---|---|--|--|
| Green Stink Bug, Southern Green Stink Bug, Red Shouldered Stink Bug (cont.) Treat when an average of 1 stink bug per row foot is found using a shake sheet or 9 stink bugs per 25 sweeps up to R6 growth stage. Double threshold (18 per 25 sweeps) from R6 to R6.5 growth stage and terminate sprays after R6.5, keeping application-to-harvest interval restrictions in mind. | gamma-cyhalothrin (R) Proaxis 0.5 CS | 3.2-3.84 oz | 0.0125-0.015 | 40-66.7 | | 45 | 24 |
| | Declare 1.25 CS | 1.28-1.54 oz | | 83-100 | | | |
| | lambda-cyhalothrin (R) Warrior II 2.08 CS <i>(See Generic Insecticides)</i> | 1.6-1.92 oz | 0.025-0.03 | 67-80 | | 30 | 24 |
| | lambda-cyhalothrin + chlorantraniliprole (R) Besiege 1.252 | 8.0-10.0 oz | 0.08-0.098 | 12.8-16 | DO NOT graze or feed hay to livestock. DO NOT exceed 20 fl oz per acre per season. | 30 | 24 |
| | lambda-cyhalothrin + thiamethoxam (R) Endigo ZCX 2.706 | 4.0-4.5 oz | 0.08-0.09 | 28.4-32 | | 30 | 24 |
| | zeta-cypermethrin (R) Mustang Maxx 0.8 EC <i>(See Generic Insecticides)</i> | 3.2-4.0 oz | 0.02-0.025 | 32-40 | | 21 | 12 |
| | zeta-cypermethrin + bifenthrin + imidacloprid (R) Triple Crown 2.25 | 4.8 oz | 0.084 | 33 | DO NOT apply again for 30 days. | 21 | 12 |
| zeta-cypermethrin + bifenthrin (R) Hero 1.24 EC | 4.0-10.3 oz | 0.04-0.1 | 12.4-32 | DO NOT apply more than 0.4 lb ai of Hero per season. DO NOT apply again for 30 days. | 21 | 12 | |
| Brown Stink Bug Treat when an average of 1 stink bug per row foot is found using a shake sheet or 9 stink bugs per 25 sweeps up to R6 growth stage. Double threshold (18 per 25 sweeps) from R6 to R6.5 growth stage and terminate sprays after R6.5, keeping application-to-harvest interval restrictions in mind. | acephate (R) Orthene/Acephate 90 S Orthene/Acephate 97 S | 0.56-1.1 lb 0.5-1.0 lb | 0.5-1.0 | | DO NOT apply more than 1.5 lb ai acephate per season. | 14 | 24 |
| | bifenthrin (R) Brigade 2 EC <i>(See Generic Insecticides)</i> | 2.1-6.4 oz | 0.033-0.1 | 20-61 | DO NOT apply more than 0.3 lb ai of Brigade per season. DO NOT apply again for 30 days. | 18 | 12 |
| | clothianidin Belay 2.13 | 4-6 oz | 0.05-0.1 | 21.3-42.7 | DO NOT apply Belay treatments less than 7 days apart. DO NOT apply more than 12 oz per acre. | 21 | 12 |
| | lambda-cyhalothrin + thiamethoxam (R) Endigo ZCX 2.7 | 4.0-4.5 oz | 0.08-0.09 | 28.4-32 | | 30 | 24 |
| | zeta-cypermethrin + bifenthrin + imidacloprid (R) Triple Crown 2.25 | 4.8 oz | 0.084 | 33 | DO NOT apply again for 30 days. | 21 | 12 |
| Redbanded Stink Bug Treat when an average of 4 stink bugs per 25 sweeps up to R6.5 growth stage. | acephate (R) Orthene/Acephate 90 S Orthene/Acephate 97 S | 1.1 lb 1.0 lb | 1.0 | | DO NOT apply more than 1.5 lb ai acephate per season. DO NOT tank mix acephate with sodium chlorate. Tank mixing with sodium chlorate may result in explosion of fire. | 14 | 24 |
| | bifenthrin (R) Brigade 2 EC <i>(See Generic Insecticides)</i> | 6.4 oz | 0.1 | 20 | DO NOT apply more than 0.3 lb ai of Brigade per season. DO NOT apply again for 30 days. | 18 | 12 |
| | clothianidin Belay 2.13 | 4-6 oz | 0.07-0.1 | 21.3-32 | DO NOT apply Belay treatments less than 7 days apart. DO NOT apply more than 12 oz per acre. | 21 | 12 |

SOYBEAN INSECT CONTROL

| Insect | Insecticide | Formulation/ Acre | Lb ai/ Acre | Acres/ Gallon | Application/Comments | Minimum Days From Last Application to Harvest | Restricted Entry Interval (REI) Hours | |
|---|--|------------------------------|------------------------|--------------------------|--|--|--|--|
| Redbanded Stink Bug (cont.) Treat when an average of 10 bugs per 25 sweeps from R6.5 to R7. Terminate insecticide applications at R7 if weather conditions are favorable. | lambda-cyhalothrin + thiamethoxam (R) Endigo ZCX 2.7 | 4.0-4.5 oz | 0.08-0.09 | 28.4-32 | | 30 | 24 | |
| | beta-cyfluthrin + imidacloprid (R) Leverage 360 | 2.8 oz | 0.066 | 28.32 | | 21 | 12 | |
| | Tank Mix Options With Bifenthrin | | | | | | | |
| | acephate (R) Orthene 97S | 0.5 lb | 0.5 | | Tank mix Orthene, Belay or Imidacloprid with 5.12 fl oz of bifenthrin (Brigade 2EC or generic) per acre. Tank mixes have proven to give superior control. | 18 | 24 | |
| | clothianidin Belay 2.13 | 3 oz | 0.05 | 42.7 | | 21 | 12 | |
| | imidacloprid Imidacloprid 4F Imidacloprid 2F (See Generic Insecticides) | 1.5 oz 3 oz | 0.047 | 85.3 42.7 | | 21 | 12 | |
| Multiple Pests For control of multiple pests exceeding thresholds. | acephate + bifenthrin (R) Acenthrin 80 S | 8-21 oz | 0.4-1.05 | | Bollworm, Cutworm, Grasshopper, Bean Leaf Beetle, Stink Bugs, Cabbage Looper, Green Cloverworm, Velvetbean Caterpillar, Kudzu Bug, Spider Mites, Garden Webworm | 14 | 24 | |
| | acetamiprid + bifenthrin (R) Justice 1.8 EC | 2.5-5.0 oz | 0.035-0.07 | 25.6-51.2 | Bollworm, Cutworm, Grasshopper, Bean Leaf Beetle, Stink Bugs, Cabbage Looper, Green Cloverworm, Velvetbean Caterpillar, Kudzu Bug, Spider Mites, Garden Webworm | 30 | 12 | |
| | bifenthrin (R) + acetameprid Argyle 1.52 OD | 5-9 oz | 0.06-0.11 | 14-25.6 | Bollworm, Cutworm, Grasshopper, Bean Leaf Beetle, Stink Bugs, Cabbage Looper, Green Cloverworm, Velvetbean Caterpillar, Kudzu Bug, Spider Mites, Garden Webworm | 30 | 12 | |
| | bifenthrin + chlorantraniliprole Elevest 2.22 SC | 4.8-9.6 oz | 0.084- 0.167 | 26.7-13 | Bollworm, Tobacco Budworm, Cutworm, Grasshopper, Bean Leaf Beetle, Stink Bugs, Loopers, Green Cloverworm, Velvetbean Caterpillar, Kudzu Bug, Garden Webworm, Saltmarsh Caterpillar | 18 | 12 | |
| | gamma-cyhalothrin (R) + spinosad Consero 5.25 SC | 2-4 oz | 0.08-0.16 | 32-64 | Bollworm, Tobacco Budworm, Cutworm, Grasshopper, Green Stink Bugs, Cabbage Looper, Green Cloverworm, Velvetbean Caterpillar, Garden Webworm | 28 | 24 | |
| | imidacloprid + beta-cyfluthrin (R) Leverage 360 SC | 2.8 oz | 0.067 | 45.7 | Bollworm, Cutworm, Grasshopper, Bean Leaf Beetle, Stink Bugs, Cabbage Looper, Green Cloverworm, Velvetbean Caterpillar, Kudzu Bug, Garden Webworm | 21 | 12 | |
| | lambda-cyhalothrin (R) + chlorantraniliprole Besiege 1.25 SC | 5-10 oz | 0.49-0.98 | 12.8-25.6 | Bollworm, Tobacco Budworm, Cutworm, Grasshopper, Bean Leaf Beetle, Green Stink Bugs, Loopers, Green Cloverworm, Velvetbean Caterpillar, Kudzu Bug, Garden Webworm, Saltmarsh Caterpillar | 30 | 24 | |
| | lambda-cyhalothrin (R) + thiamethoxam Endigo ZCX 2.7 | 3.5-5 oz | 0.07-0.1 | 25.6-36.6 | Bollworm, Cutworm, Grasshopper, Bean Leaf Beetle, Stink Bugs, Cabbage Looper, Green Cloverworm, Velvetbean Caterpillar, Kudzu Bug, Garden Webworm | 30 | 24 | |
| | zeta-cypermethrin + bifenthrin + imidacloprid (R) Triple Crown 2.25 | 3.5-4.8 oz | 0.061- 0.084 | 33-36.6 | Bollworm, Cutworm, Grasshopper, Bean Leaf Beetle, Stink Bugs, Cabbage Looper, Green Cloverworm, Velvetbean Caterpillar, Kudzu Bug, Spider Mites, Garden Webworm | 21 | 12 | |