

MP144
2025

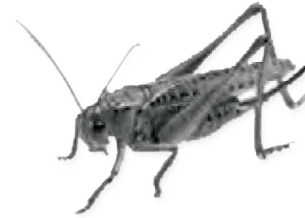
Japanese Beetle



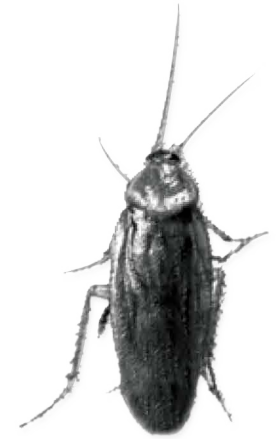
Lice



Grasshopper

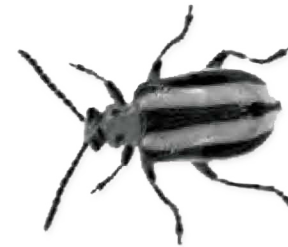


Cockroach



Insecticide Recommendations for Arkansas

Potato Beetle



Mosquito



Bed Bug



Brown Recluse



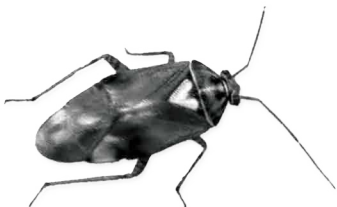
Brown Marmorated
Stink Bug



House Fly



Tarnished Plant Bug



Corn Earworm



UofA
DIVISION OF AGRICULTURE
RESEARCH & EXTENSION
University of Arkansas System
www.uaex.uada.edu



ARKANSAS
WHEAT
PROMOTION BOARD



ARKANSAS
RICE
CHECK-OFF

ARKANSAS
SOYBEAN
PROMOTION BOARD

TABLE OF CONTENTS

	Page		Page
Introduction	3	Fruits and Nuts	
Poison Control Centers in Arkansas	4	Apple and Pear.....	135
Insecticide Application	4	Blackberry and Raspberry.....	141
General Information About Insecticides		Blueberry.....	144
Formulations and Concentrations.....	9	Cherry, Peach and Plum.....	146
Table of Weights, Measures and Dilutions.....	10	Grape.....	150
Common and Trade Names of Chemicals.....	13	Home Orchard.....	154
Toxicity of Certain Insecticides.....	18	Pecan.....	157
Trade Names of Generic Insecticides.....	25	Strawberry.....	159
Protecting Pollinators From Pesticides	26	Hemp.....	160
Relative Toxicity of Pesticides to Honeybees.....	27	Vegetables	
Animals		Commercial Growers.....	161
Barns and Stables (fly control).....	29	Home Gardeners.....	188
Beef Cattle.....	32	Recreation Areas	232
Dairy Cattle.....	39	Mosquito Control by Commercial and Government Agencies	239
Premises, Dogs, Cats, Canaries, Parakeets, Rabbits.....	47	Ornamentals Grown in Nurseries or Landscapes	244
Horses.....	51	Ornamentals Grown in Commercial Greenhouses	256
Poultry.....	56	Ornamentals Grown in Interior Plantscapes	273
Sheep and Goats.....	62	Ornamental Insect Control for Homeowners	
Swine.....	63	Outdoor Ornamentals.....	278
Field Crops		Indoor Ornamentals.....	284
Corn (field).....	66	Home Lawns	285
Cotton.....	74	Commercial Turf and Golf Courses	293
Forages (alfalfa and pasture).....	85	Commercial Christmas Trees	304
Peanut.....	91	Household and Structural Pests	311
Rice.....	96	R = Restricted Use Pesticide	
Small Grain.....	100		
Grain Sorghum.....	103		
Soybean.....	108		
Edamame.....	122		
Sunflower.....	128		
Stored Grain.....	129		
Honey Bee Hive Management.....	131		

Pursuant to 7 CFR § 15.3, the University of Arkansas System Division of Agriculture offers all its Extension and Research programs and services (including employment) without regard to race, color, sex, national origin, religion, age, disability, marital or veteran status, genetic information, sexual preference, pregnancy or any other legally protected status, and is an equal opportunity institution.

The information given herein is supplied with the understanding that no discrimination is intended and no endorsement by the University of Arkansas System Division of Agriculture is implied. The agrichemical recommendations herein are consistent with current federal and state pesticide labeling as of the date of publication. Revisions in labels can occur at any time. For your safety before using any recommended pesticide, always read the product label.

INSECTICIDE RECOMMENDATIONS FOR ARKANSAS

INTRODUCTION

Recommendations and products listed in this publication are reviewed annually by the contributing authors. Research on chemical control of insect pests is ongoing as new products are developed and registered for use in the crops and situations presented. The information presented in this publication is taken from tests conducted and recommendations developed in Arkansas and is supplemented by published information from surrounding states. **The use of any chemical suggested in this guide should always be preceded by a careful examination of the container label for directions and precautions.** Many insecticides have registrations for uses not listed in this publication. They are not included here because of either a lack of space in the publication, their lack of availability for purchase in the state, their inefficiency for the purpose intended or their extremely hazardous nature when a less hazardous chemical will do the job just as well. Rates of insecticides in this publication are presented as recommended rate ranges to provide a flexible guide for product use. Insecticide performance charts in this guide are intended to indicate relative performance of products and not percent control. Should the registration of an insecticide or certain uses of an insecticide be canceled by federal or state agencies, recommendations thus affected herein are no longer applicable after such action is taken.

**Edited by Glenn Stuebaker, Professor/Extension
Entomologist - Row Crops/IPM Coordinator**

**Contributing Authors
University of Arkansas System Division of Agriculture**

Nick Bateman

Associate Professor/Extension
Entomologist - Row Crops
Rice Research and Extension Center
2900 Highway 130 East
Stuttgart, AR 72160
Phone - (870) 456-8486

Jason Davis

Assistant Professor/Extension Remote
Sensing & Pesticide Application Specialist
70 Experiment Station Drive
Batesville, AR 72501
Phone - (870) 793-7432

Aaron Cato

Assistant Professor/Extension
Hort. IPM Specialist
2301 South University Avenue
Little Rock, AR 72204
Phone - (501) 671-2191

Ben Thrash

Associate Professor/Extension
Entomologist - Row Crops
2001 Highway 70 East, Box 357
Lonoke, AR 72086
Phone - (501) 676-3124

Kelly Loftin

Professor/Extension
Entomologist - Livestock
Cralley-Warren Research Center
2601 North Young Avenue
Fayetteville, AR 72704
Phone - (479) 575-3462

Ples Spradley

Associate Professor/Extension Pesticide
Assessment Specialist
2301 South University Avenue
Little Rock, AR 72204
Phone - (501) 671-2234

Glenn Stuebaker

Professor/Extension Entomologist -
Row Crops/IPM Coordinator/Associate
Department Head - Entomology and
Plant Pathology
NE Rice Research and Extension Center
15327 Highway 1
Harrisburg, AR 72432
Phone - (501) 454-1922

Contact Information:

Cooperative Extension Service
2301 South University Avenue
Little Rock, AR 72204
Phone - (501) 671-2000
www.uaex.uada.edu

Neelendra Joshi

Associate Professor
(Pollinator Health & Ecology
Toxicology, IPM)
University of Arkansas
Fayetteville, AR 72701
Phone - (479) 575-3872

Jon Zawislak

Assistant Professor/Extension
Entomologist - Apiculture/Urban
Entomology
Crawley-Warren Research Center
2601 N. Young Ave.
Fayetteville, AR 72704
Phone - (501) 671-2222

Department of Entomology
and Plant Pathology
Fayetteville, AR 72701
Phone - (479) 575-2451
enpl.uark.edu



This publication printed with soybean ink on recycled paper.