

**Complete Beekeeping Short Course**

**Part 12:**  
**Managing**  
**Small Hive Beetles**

**U of A** DIVISION OF AGRICULTURE  
RESEARCH & EXTENSION  
University of Arkansas System

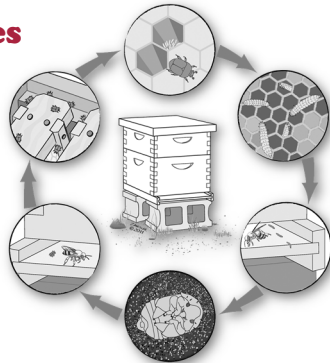
**small hive beetles**

- *Aethina tumida*
  - opportunistic hive pest
  - from South Africa
  - found in U.S. in 1996
    - spread in packages
    - migratory beekeepers
    - can fly several miles



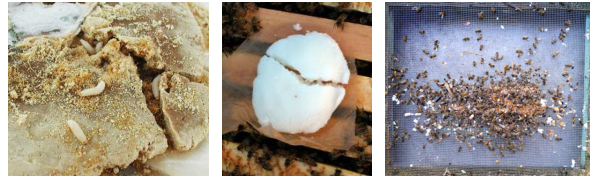
**small hive beetles**

- life cycle
  - adults invade hive
  - hide from bees
  - lay eggs
  - larvae feed
  - ruin honey
  - exit hive
  - pupate in soil
  - emerge as adults



**small hive beetles**

- scavengers that feed on whatever they find
  - protein patties
  - grease patties
  - hive debris



**small hive beetles**

- treatments?
- strong colonies
  - don't over-supers
  - stay queen-right
  - keep things clean



**small hive beetles**

- treatments?
- in-hive chemicals
  - of limited use



**small hive beetles**

- treatments?
- soil drench
  - Gardstar 40% EC (permethrin)
- wont' stop adults from flying in from other locations



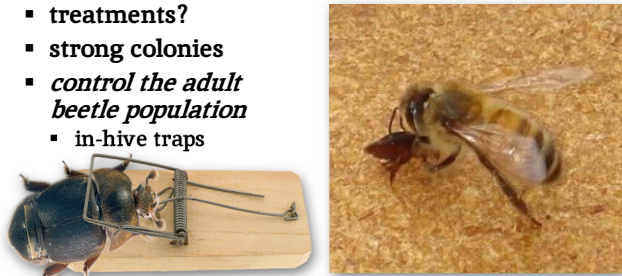
**small hive beetles**

- treatments?
- nematodes
  - *Heterorhabditis indica*
  - *Steinernema riobrave*



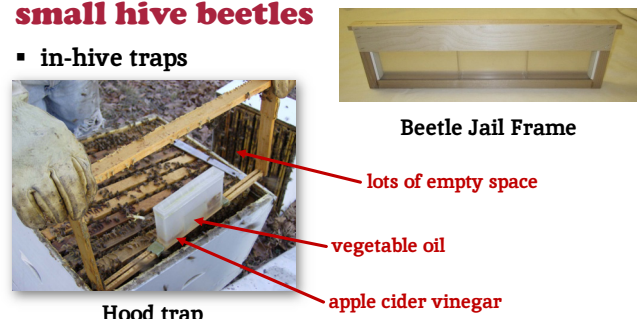
**small hive beetles**

- treatments?
- strong colonies
- control the adult beetle population
  - in-hive traps



**small hive beetles**

- in-hive traps



Beetle Jail Frame

lots of empty space

vegetable oil

apple cider vinegar

Hood trap

**small hive beetles**

- in-hive traps



West Trap

Freeman Beetle Trap

MINERAL OIL

**small hive beetles**

- in-hive traps



Baitable Beetle Jail Jr.

AJ's Beetle Eater

Beetle Blasters

**small hive beetles**

- in-hive traps



Beetle Jail Entrance Trap

Beetle Baffles

**small hive beetles**

- small hive beetle traps



**small hive beetles**

- small hive beetle traps

