

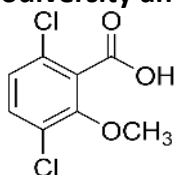
3D-Student Science Performance

Author: Diedre Young, Soybean Science Challenge

Grade: 9-12 Integrated Biology

The Great Dicamba Debate

Lesson Topic: Biodiversity and Human Impact



THIS IS A MULTI-DAY LESSON!

Performance Expectations (Standard) from State Standards or NGSS:

BI-LS1-3: Plan and conduct an investigation to provide evidence that feedback mechanisms maintain homeostasis. [AR Clarification Statement: examples of investigations could be heart rate response to exercise, stomata response to moisture and temperature, and root development in response to water levels.] [AR Assessment Boundary: Assessment does not include the cellular processes involved in the feedback mechanism.]

BI-LS2-2: Use mathematical representations to support and revise explanations based on evidence about factors affecting biodiversity and populations in ecosystems. [AR Clarification Statement: Examples of mathematical representations including finding the average, determining trends and using graphical comparison of multiple sets of data.] [AR Assessment Boundary: Assessment is limited to provided data.]

BI-LS2-6: Evaluate the claims, evidence and reasoning that the complex interactions in ecosystems maintain relatively consistent numbers and types of organisms in stable conditions but changed conditions may result in a new ecosystem. [AR Clarification Statement: Examples of changes in ecosystem conditions could include modest biological or physical changes, such as moderate hunting, a seasonal flood; and extreme changes such as a volcanic eruption or sea level rise.]

BI-LS2-7: Design, evaluate and refine a solution for reducing the impacts of human activities on the environment and biodiversity. [AR Clarification Statement: This PE is fully addressed

in this course. Emphasis is on the impact of human activities on biodiversity such as dissemination of invasive species, habitat degradation and water quality.] [AR Assessment Boundary: Assessment is to include student choice from multiple scenarios.]

BI-LS4-6: Create or revise a simulation to test a solution to mitigate adverse impacts of human activity on biodiversity. [AR Clarification Statement: Emphasis is on refining solutions for a proposed problem related to threatened or endangered species, genetic variation of organisms of multiple species and biodiversity.]

BI3-ETS1-3: Evaluate a solution to a complex real-world problem based on prioritized criteria and trade-offs that account for a range of constraints, including cost, safety, reliability and aesthetics as well as possible social, cultural and environmental impacts. [AR Clarification Statement: Problems could include effect of logging on animal or human populations, response to invasive species, agricultural practices, creating dams, and maintaining fish populations in public lakes.]

CCSS Connections:

Reading:

Connections to the Arkansas Disciplinary Literacy Standards:

RST.11-12.9: Synthesize information from a range of sources into a coherent understanding of a process, phenomenon or concept, resolving conflicting information when possible.

WHST.9-12.5: Develop and strengthen writing as needed by planning, revising, editing, rewriting, or typing a new approach, focusing on addressing what is more significant for a specific purpose and audience.

WHST.9-12.7: Conduct short as well as more sustained research projects to answer a question or solve a problem, narrowing or broadening the inquiry where appropriate; synthesize multiple sources on the subject, demonstrating understanding of the subject under investigation.

WHST.11-12.8: Gather relevant information from multiple authoritative print and digital sources, using advanced searches effectively; assess the strengths and limitations of each source in terms of the specific task, purpose, and audience; integrate information into the text selectively to maintain the flow of ideas, avoiding plagiarism and overreliance on any one source and following a standard format for citation.

Connections to the Arkansas English Language Arts Standards:

SL.11-12.5: Make strategic use of digital media in presentations to enhance understanding of findings, reasoning, and evidence and add interest.

Math:

MP.2: Reason abstractly and quantitatively.

MP.4: Model with mathematics.

HSN.Q.A.1-3: Use units as a way to understand problems, and to guide the solution of multi-step problems; choose and interpret units consistently, choose and interpret the scale and origin in graphs and data displays. Define appropriate quantities for descriptive modeling. Choose a level of accuracy appropriate to limitations on measurement when reporting quantities.

HSS.IC.B.6: Read and explain, in context, the validity of data from outside reports by identifying the variables quantitative or categorical; describing how the data was collected; indicating any potential biases, flaws and identifying inferences the author of the report made from sample data.

Lesson Performance Expectations:

- Students will be able to research a current event issue (the use of Dicamba in soybean and other fields).
- Students will use critical thinking to make an informed decision in regards to Dicamba use, keeping in mind the biodiversity impact, human impact, feedback and the complex ecosystem interaction involved with Dicamba.
- Students will debate the reason for their decision in a town hall meeting session.

Student Science Performance

Phenomenon:

Due to increasing demand for higher food production, herbicides like Dicamba are used on commercial crops to kill highly invasive weeds. Unfortunately, Dicamba also causes increased resistant strains and can damage nearby sensitive crops. It also favors growing GMO crops that are resistant to Dicamba.

Gather:

- 1. Students develop questions and obtain information about the stakeholder they have procured.***
- 2. Students obtain information about Dicamba usage as it pertains to the stakeholder they are representing.***

Teaching suggestion: There are several websites students can refer to for learning about their position. Here are just a few:*

<http://scholarworks.uark.edu/cgi/viewcontent.cgi?article=1608&context=etd> Covers Pigweed and herbicide usage.

<https://www.extension.purdue.edu/extmedia/WS/WS-51-W.pdf> A good explanation of Pigweed.

<https://www.uaex.uada.edu/yard-garden/resource-library/weed-id/pigweed-smooth-common.aspx>

Pigweed information

<https://www.uaex.uada.edu/farm-ranch/pest-management/weed/2017-dicamba.aspx>

Dicamba in Arkansas

http://npic.orst.edu/factsheets/dicamba_gen.html Dicamba fact sheet

<https://pubchem.ncbi.nlm.nih.gov/compound/dicamba#section=Top> This discusses Dicamba affects in the body. Very technical though

<https://www.uaex.uada.edu/publications/pdf/FSA-2181.pdf> Article on FAQ on Dicamba in Arkansas

**See Appendix C for more options*

Reason:

- 1. Students construct a detailed portfolio on the position of their stakeholder.**
- 2. Students evaluate and analyze other stakeholder claims during the town hall meeting.**

Class Discussion:

Questions to initiate Discussion:

Q: How is farming done today?

Q: Do the students know any farmers?

Q: What crops are grown in Arkansas and why is farming important?

Q: How do farmers manage crops (what do they do to curtail weeds and pests)?

Q: Why is this an essential part of farming?

Q: How exactly do herbicides affect weeds?

Q: What are some advantages to chemical management of weeds and pests in farming?

Q: What are some drawbacks to chemical management of weeds and pests in farming?

Teacher Hints: The 'Explain' section is meant to give an overview of Dicamba and its relevance and issues to Arkansas crops. This is a good time to bring in several different

concepts of your own, both chemical and biological. Feel free to add topics here that pertain to the lesson and not mentioned in the 'Explain' section.

Communicate:

1. *Students use graphic media to communicate the advantages of their stakeholder position. Student will use posters, PowerPoint, etc. to present to the class.*

Class Presentations:

Q: What is the position of the stakeholder?

Q: What research backs up the stakeholder's position?

Q: What data has been acquired to defend this position to the other stakeholders?

2. *Students will defend their stakeholder position at the town hall meeting.*
3. *Students will revise their opinion of their stakeholder position in light of the class discussion.*

Formative Assessment for Student Learning:

Elicit Evidence of Learning:

Evidence of Student Proficiency

- *Student will have researched their stakeholder position.*
- *Student will be able to successfully debate their position at the town hall meeting. Student will have several key reasons for their decision on Dicamba usage.*

Range of Typical Student Response

Descriptors of grade-level appropriate student responses:

- *Full understanding: student is well prepared and successfully debates position. Student's Dicamba decision on reflection has at least three reasons.*
- *Partial understanding: student is partially prepared and has limited information to debate their position. Reflection had one to two reasons for Dicamba decision.*

Limited understanding: student is barely prepared for town hall meeting, cannot debate their position as they have little to no research and give no reasons for their Dicamba decision.

Acting on Evidence of Learning

This is a brief description of the instructional actions to take based on the students' performance.

Description of instruction action and response to support student learning.

- *action for student who displays partial or limited understanding: Students will be matched with an academically stronger classmate to support and guide them with research and presentation.*

extensions of learning for student who displays full understanding: Students are encouraged to look at the engineering side of making sprayers more efficient with less overspray.

Science Practices:

Planning and Carrying out Investigations.

Constructing Explanations and Designing Solutions.

Engaging in Argument from Evidence

Science Essentials:

- Plan and conduct an investigation individually and collaboratively to produce data to serve as the basis for evidence and in the design; decide on types, how much and accuracy of data needed to produce reliable measurements and consider limitations on the precision of the data. [BI-LS1-3]
- Construct and revise an explanation based on valid and reliable evidence obtained from a variety of sources of stakeholder view. (BI-LS2-7, BI3-ETS1-3)
- Share explanation with others about specific stakeholder views. (BI-LS2-7, BI3-ETS1-3)
- Engage in debate from evidence presented by stakeholders.

- Work collaboratively to construct science explanations and design solutions based on evidence presented at town hall meeting. (BI-LS2-6)
- Express a decision in writing in regards to the Dicamba issue. (BI-LS2-6)

Crosscutting Concepts:

Cause and Effect

Scale, Proportion and Quantity

Stability and Change

Science Essentials:

- Identify and describe the causes of the phenomena. (BI-LS4-6),
- Justify predictions using cause and effect relationships. (BI-LS4-6),
- Use models to predict the behavior of a system. (BI-LS4-6),
- Identify things that trigger changes to a system that was previously stable. (BI-LS2-6 and 7).
- Use units to describe orders of magnitude for volume of Dicamba spray used. (BI-LS2-2)
- Explain significance of scale, proportion and quantity of Dicamba. (BI-LS2-2)

Disciplinary Core Ideas:

LS1.A: Structure and Function

LS2.A: Interdependence Relationships in Ecosystems.

LS2.C: Ecosystem Dynamics, Functioning and Resilience.

LS4.C: Adaptation

LS4.D: Biodiversity and Humans.

ETS1.B: Developing Possible Solutions.

Science Essentials:

- Feedback mechanisms maintain a living system's internal conditions within certain limits and mediate behaviors. Dicamba disrupts that feedback. (BI-LS1-3)
Ecosystems have carrying capacities, which are limits to the # of organisms and populations they can support. Dicamba changes these carrying capacities by eliminating broadleaf plants. (BI-LS2-2) (BI-LS2-2, BI-LS2-6, BI-LS2-7)
A complex set of interactions within an ecosystem can keep its numbers and types of organisms relatively constant. Extreme fluctuations in conditions or the size of any population by Dicamba can challenge the function of an ecosystem. (BI-LS2-2, BI-LS2-6, BI-LS2-7)
- Changes in the environment, whether naturally occurring or human induced, have thus contributed to the expansion of some species and the emergence of new distinct species and the decline/extinction of some species. Dicamba has contributed to these changes. (BI-LS4-6)
- Human activity is having an adverse impact on biodiversity. (BI-LS2-7, BI-LS4-6, BI-LS2-7)
- When evaluating solutions to the Dicamba debate, it is important to take into account a range of constraints including cost, safety, reliability and aesthetics, and consider social, cultural and environmental impacts. (BI3-ETS1-3)

Appendix A - Student Prompts

Student Prompts for the Lesson

Phenomenon:

Due to increasing demand for higher food production, herbicides like Dicamba are used on commercial crops to kill highly invasive weeds. Unfortunately, Dicamba also causes increased resistant strains and can damage nearby sensitive crops. It also favors growing GMO crops that are resistant to Dicamba.

Group Performances:

1. Ask questions to plan an investigation for the research of Dicamba in the stakeholder view for the town hall meeting.
2. Plan and an investigation to gather evidence for Dicamba usage, causing or not causing, changes in the system.

3. Construct an explanation for the cause or **no cause** of changes in the system by Dicamba usage.
4. Use a model to defend a stakeholder position in regards to Dicamba usage.

Class Discussion

Individual Performances:

5. Develop an argument for how the evidence you collected supports or refutes your explanation for your support for or against the use of Dicamba.

Decide if your argument is valid in light of classroom discussion

Appendix B – Materials, Prep Time and Extend Section

Materials:

- Stakeholder cards (at end of lesson)
- Notebooks for notes
- Research material for stakeholder information
- Various media/graphic material for town hall meeting

Teacher Preparation Time:

Make up cards before the lesson. The lesson time varies depending on the amount of time you want to give to the students to research their position. This lesson should be a minimum of one week to give students at least a few days for research. The town hall meeting will take a full class period.

Extend:

This lesson can be tied into several different new concepts such as biodiversity, population dynamics, adaptation, phase changes and Bernoulli's Principle. It is a good lead into engineering and how to make sprayers more efficient and less messy when releasing spray. Mathematics can be brought in to determine spray volume per acre, temperature levels for volatility and atmospheric pressure concerns when spraying.

Appendix C – resources:

There are several websites that are worth checking out for this lesson. Here are some examples:

<http://scholarworks.uark.edu/cgi/viewcontent.cgi?article=1608&context=etd> Covers Pigweed and herbicide usage.

<https://www.extension.purdue.edu/extmedia/WS/WS-51-W.pdf> A good explanation of Pigweed.

<https://www.uaex.uada.edu/yard-garden/resource-library/weed-id/pigweed-smooth-common.aspx>

Pigweed information

<https://www.uaex.uada.edu/farm-ranch/pest-management/weed/2017-dicamba.aspx>
Dicamba in Arkansas

http://npic.orst.edu/factsheets/dicamba_gen.html Dicamba fact sheet

<https://pubchem.ncbi.nlm.nih.gov/compound/dicamba#section=Top> This discusses Dicamba affects in the body. Very technical though

<https://www.bing.com/images/search?q=photos+of+dicamba+damaged+crops&gpvt=photos+of+dicamba+damaged+crops&FORM=IGRE> Photos of Dicamba damaged crops

<https://cen.acs.org/articles/95/i33/Widespread-crop-damage-dicamba-herbicide.html>
Dicamba damage

<https://www.usnews.com/news/best-states/arkansas/articles/2018-02-16/judge-considers-companys-challenge-to-arkansas-dicamba-ban> Arkansas lawsuits

STAKEHOLDER SHEETS

Sensitive Sam, Farmer: While you are not against herbicides and pesticides in general (and use pesticides on your soybeans to control the Red Banded Stinkbug), you do have an issue with Dicamba. Your soybeans are very sensitive to Dicamba and with your life savings growing out in the field, one drift would wipe you out financially. Certainly, there are other alternatives that don't threaten your pocketbook! So not only will you be bringing reasons why you are against Dicamba, you also plan on bringing up those alternatives at the meeting.

Tolerant Tom, Farmer: You grow Dicamba resistant soybeans and Dicamba has literally saved your bacon in the Pigweed department! Glyphosate resistant Pigweed literally had you hog tied financially as it took over your soybean fields. Dicamba took out the plant and gave you back a crop producing farm, causing you to squeal with happiness! Not only are you for Dicamba but now that there is a less volatile version available, you believe that it should be reinstated for use all year round and will expound on this at the meeting. You understand other's concerns. Your concern is that outside folks who don't farm listen more to the internet than to folks like yourself who have worked and protected the land for generations. Your land is your future and hopefully will provide a future for your children. The banker who holds your farming loan for this year's crop expects his repayment on time. Don't these folks understand that if yield is decreased, more folks around the world who depend on soy protein will die? You have nothing against organic producers as they give the consumer choices, but organic practices simply won't feed the world's growing population. You do the math.

Al Naturale, Organic Farmer: You are all about the ‘no artificial chemicals’ part of farming. It’s natural fertilizer and homeopathic pesticides for you! Not only do you feel organic food is better for the body, it’s also better for the environment! Dicamba has been used so much it is now showing up in the soil and waterways. Plants absorb Dicamba that is present in the soil meaning people are eating Dicamba for dinner. You are against using an artificial chemical that not only has the potential to harm the environment (killing beneficial broadleaf plants due to spray drift, plus new resistant invasive species created due to Dicamba use) but we really don’t know the overall human health impact Dicamba can have long term. You are going to hit Monsanto and Dicamba users with health and holistic facts why Dicamba is bad. The fact that organic farming is much more expensive (meaning higher prices at the grocery store) and not using Dicamba would bring normal crop prices more in line with organic (thus making organic more competitive) is also a strong point but you are hoping it won’t be brought up at the meeting!

Beau Vine; Cattle Rancher: You own a large cattle ranch and love Dicamba. Dicamba has done wonders in keeping noxious invasive weeds out of your grazing areas and your cattle have never been fatter! You consider Dicamba a godsend for grazing animals and welcome its use. You will be at the meeting with facts in hand as to the benefits of Dicamba to local ranchers.

Samore Sales, Monsanto Company Representative: As the representative for the company, you obviously feel Dicamba has been given a bum rap. Without Dicamba, Pigweed and other highly invasive pest weeds would have taken over Arkansas and we would be singing the ‘Woo Pigweed Sooié’ song at Razorback games! The issues with Dicamba are due to application error and not applying at the right times. Besides, Monsanto has come out with a less volatile chemical so the whole drift problem is solved right? You plan to bring all the advantages of Dicamba to the meeting and more!

Kris Kringle, Christmas Tree Farmer: You produce Conifers (mainly firs and pines) on a local tree farm for Christmas and your farm is located next to a large soybean field. You have had dealings with Dicamba drift in the past, with many of your trees dying from the spray. You are not seeing the big 'change' that Monsanto is crowing about in regards to a lower drift potential as your soybean neighbors have told you they are now using the improved spray but you are still dealing with dead trees. You are planning on grilling Monsanto at the meeting about this new formulated spray and what they are going to do about your dead tree problem.

Connie Consumer: You are the local advocate for responsible farming. You and your cohorts worry about what exactly are we eating at the dinner table. While there is the understanding that herbicides are necessary for weed control, what do we really know about Dicamba and its effect on the human body? Plus, there is all this talk about Dicamba Drift so could organic food have Dicamba spray on it? As a participant in this meeting you come prepared to ask lots of questions about the risks of Dicamba in our food and our bodies and to argue your concerns.

Debbie Dicot, Plant Pathologist: As the local expert on invasive weeds and how Dicamba works, you have the distinction of being the only stakeholder who is trying hard not to take sides. You see the benefits of Dicamba as Glyphosate Resistant Pigweed (*Amaranthus palmeri*) is an extremely invasive species that outcompetes every crop known. It's fast growing, has high genetic variability (that leads to resistant plants) and produces on average over 500,000 small seeds per plant. Dicamba is one of the few herbicides on the market that can control this Pigweed in soybeans, so you know the benefits of this chemical. You are also aware of the damage this herbicide can do to neighboring fields due to drift and the economic impact this has on the affected farmers. You come to the meeting ready to defend both opinions but to also offer alternatives that will help lower Dicamba usage and hopefully benefit both sides.

Lau Suit, Attorney: You represent those people who have been affected by Dicamba Drift. Your specialty is Agriculture Law and it is you against the big corporate lawyers on this one. Not only do you represent farmers, but you also represent homeowners and other innocent victims of this herbicide. You plan to come to this meeting armed with facts about the legal ramifications of this spray's issues and plan on citing the latest legal activity here in Arkansas that focuses on Dicamba.