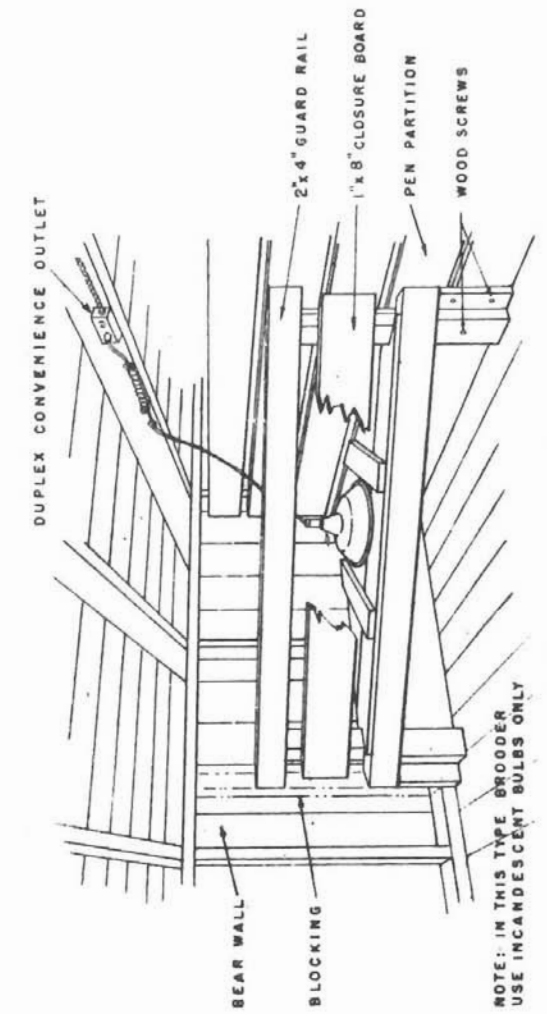
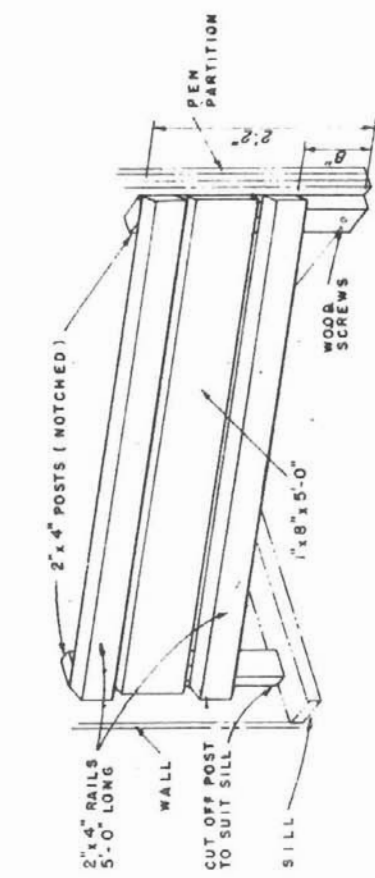


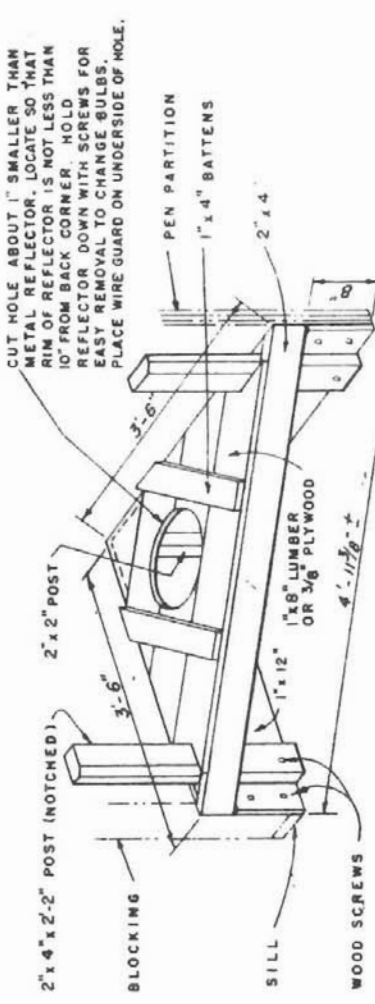
TYPICAL INSTALLATION



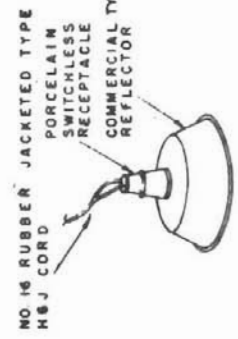
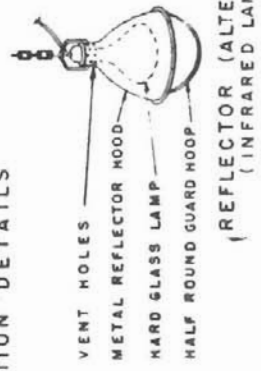
TYPICAL INSTALLATION



CONSTRUCTION DETAILS



CONSTRUCTION DETAILS



PEN TYPE BROODER

LAMP ASSEMBLY (ALTERNATE)

OBTAIN WORKING DRAWINGS FROM  
COUNTY EXTENSION OFFICE

GENERAL HOG HOUSE WIRING RECOMMENDATIONS

1. NUMBER 12 AWG. TYPE UF, NON-METALIC SHEATHED CABLE.
2. DO NOT USE MORE THAN SIX 250 WATT LAMPS OR TEN 150 WATT LAMPS PER 20 AMPERE CIRCUIT
3. PERMANENT AND MOVABLE BUILDINGS MUST HAVE PROPERLY FUSED SERVICE ENTRANCE BOXES.
4. THESE RECOMMENDATIONS ARE SUBJECT TO LOCAL REGULATIONS.

RECOMMENDED INCANDESCENT LIGHT BULB SIZES

- |                     |           |
|---------------------|-----------|
| MILD WEATHER        | 60 WATTS  |
| SEVERE WEATHER      | 100 WATTS |
| VERY SEVERE WEATHER | 150 WATTS |
- DO NOT USE A LAMP (BULB) OF MORE THAN 150 WATTS

HOVER TYPE BROODER

## Disclaimer

This site makes available conceptual plans that can be helpful in developing building layouts and selecting equipment for various agricultural applications. These plans may be outdated and do not necessarily represent the most current technology, construction codes, or agricultural practices. They are not construction plans and do not replace the need for competent design assistance in developing safe, legal and well-functioning agricultural building system. The University of Arkansas Cooperative Extension Service, the United States Department of Agriculture and none of the cooperating land-grant universities warranty these plans.