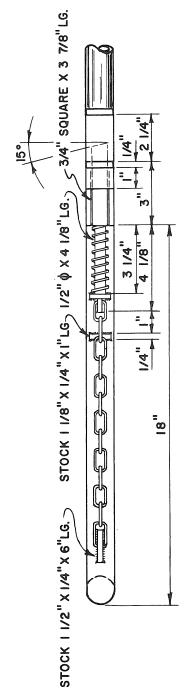


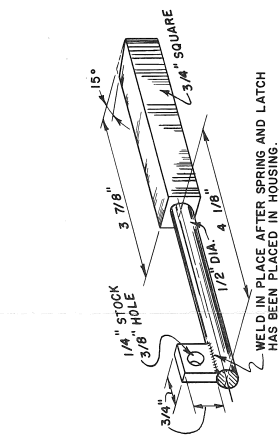
LEFT SIDE VIEW

FRONT END VIEW

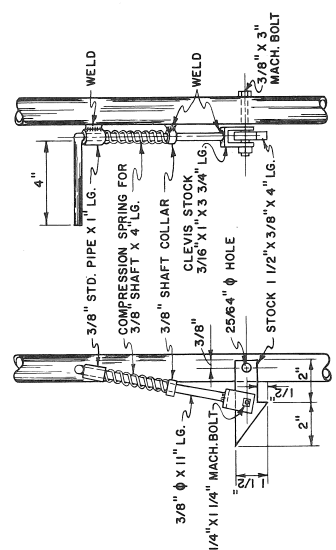
RIGHT SIDE VIEW



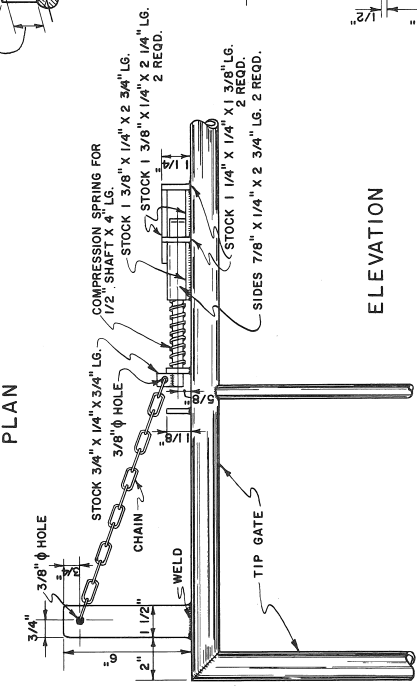
DETAILS OF SQUEEZE LATCH
(ONE REQUIRED)



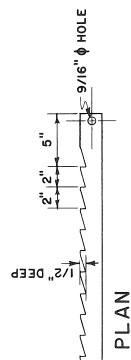
LATCH DETAIL
SCALE: HALF SIZE



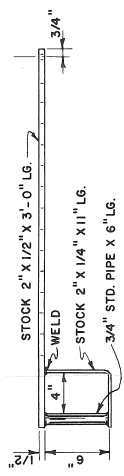
DETAIL OF TIP LATCH
(ONE REQUIRED)



DETAILS OF RATCHET BAR
(ONE REQUIRED)



PLAN



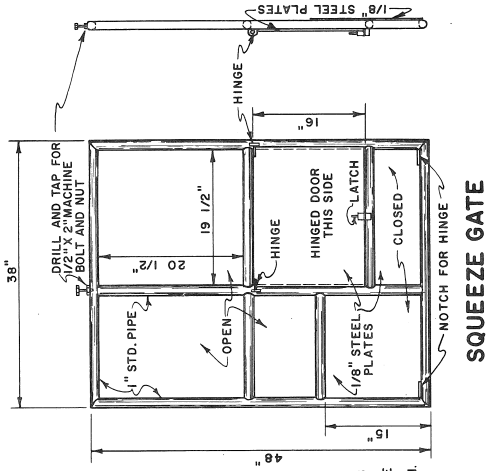
ELEVATION

TELLING CALF TABLE	
USDA 64	Agricultural Extension Service
University of Arkansas Division of Agriculture	
Cooperating	

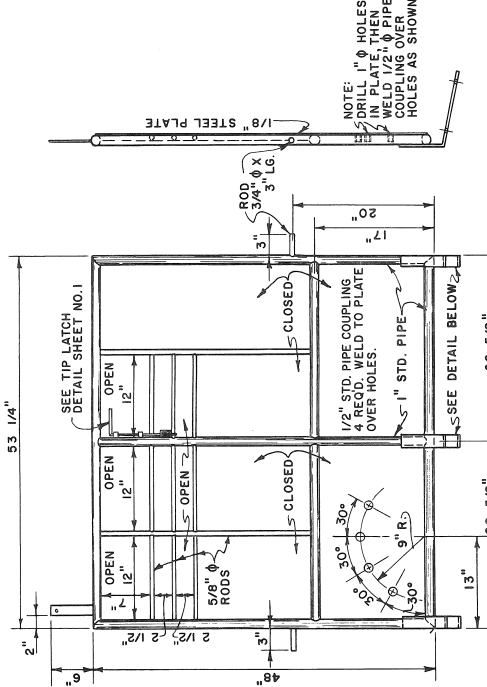
PLAN NO. 685003

SHEET 1 of 2

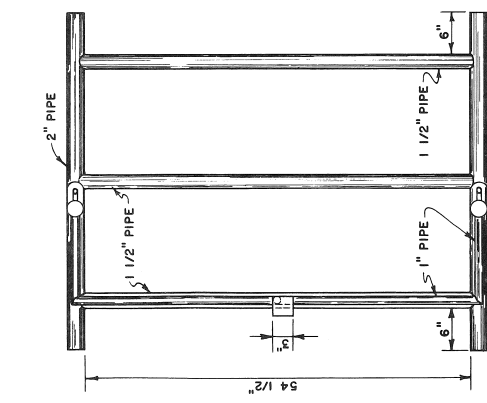
BASED ON OREGON



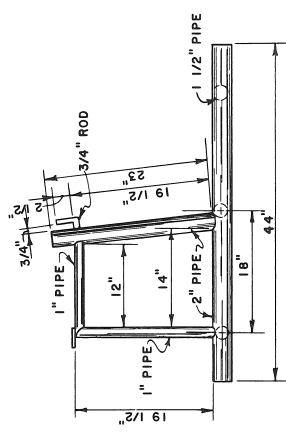
SQUEEZE GATE



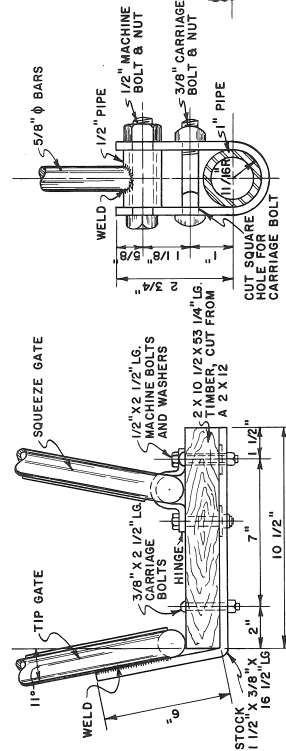
TIP GATE



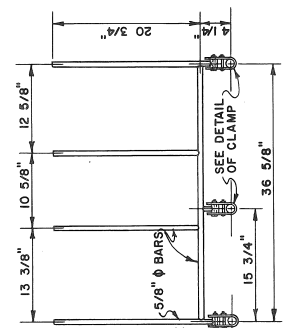
PLAN OF BASE FRAME



ELEVATION OF BASE FRAME

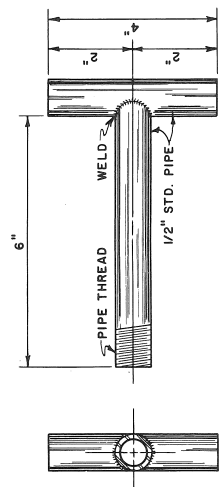


ASSEMBLY DETAIL

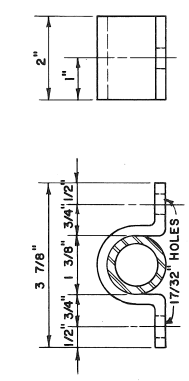


COVER BARS
(ONE REQUIRED)

CLAMP DETAIL
(THREE REQUIRED)



LEG HOLDER
(TWO REQUIRED)



SQUEEZE GATE HINGE
(TWO REQUIRED) STOCK 2" X 1/4" X 6"

TILTING CALF TABLE	
USDA 64	Agricultural Extension Service
U. S. Department of Agriculture	
Cooperating	
PLAN NO. 685003	SHEET 2 of 2

Disclaimer

This site makes available conceptual plans that can be helpful in developing building layouts and selecting equipment for various agricultural applications. These plans may be outdated and do not necessarily represent the most current technology, construction codes, or agricultural practices. They are not construction plans and do not replace the need for competent design assistance in developing safe, legal and well-functioning agricultural building system. The University of Arkansas Cooperative Extension Service, the United States Department of Agriculture and none of the cooperating land-grant universities warranty these plans.