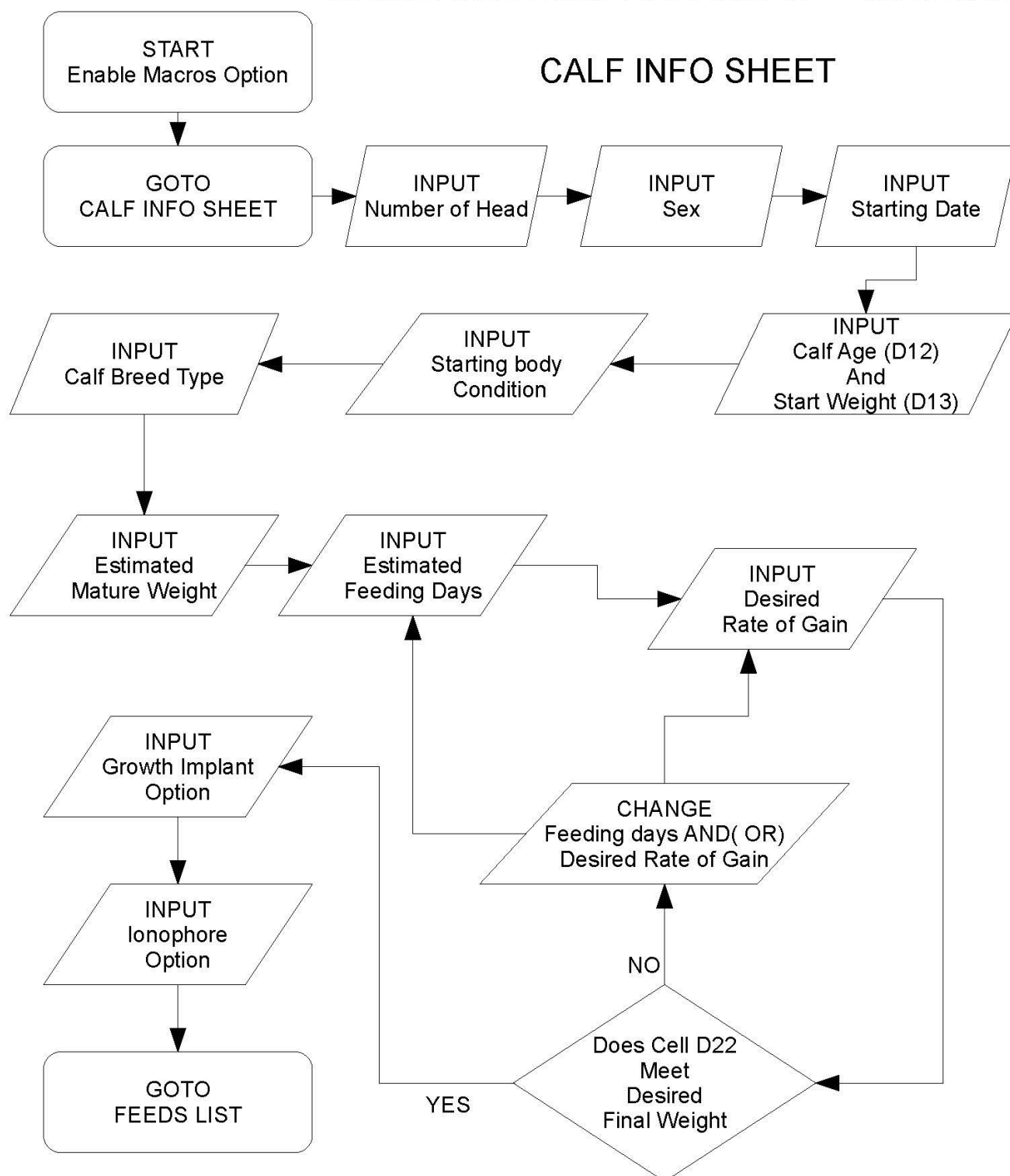




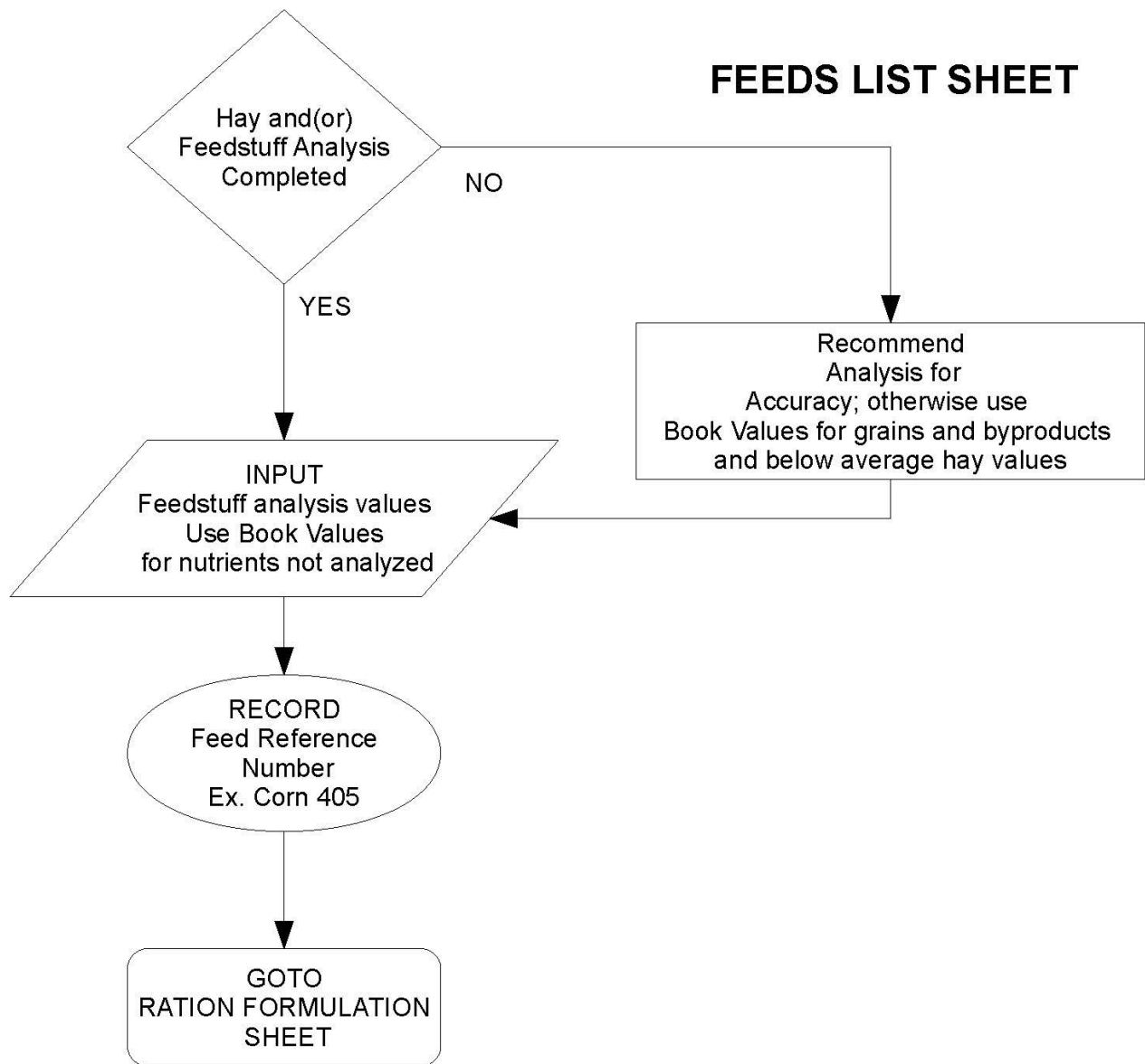
**DIVISION OF AGRICULTURE**  
**RESEARCH & EXTENSION**

*University of Arkansas System*

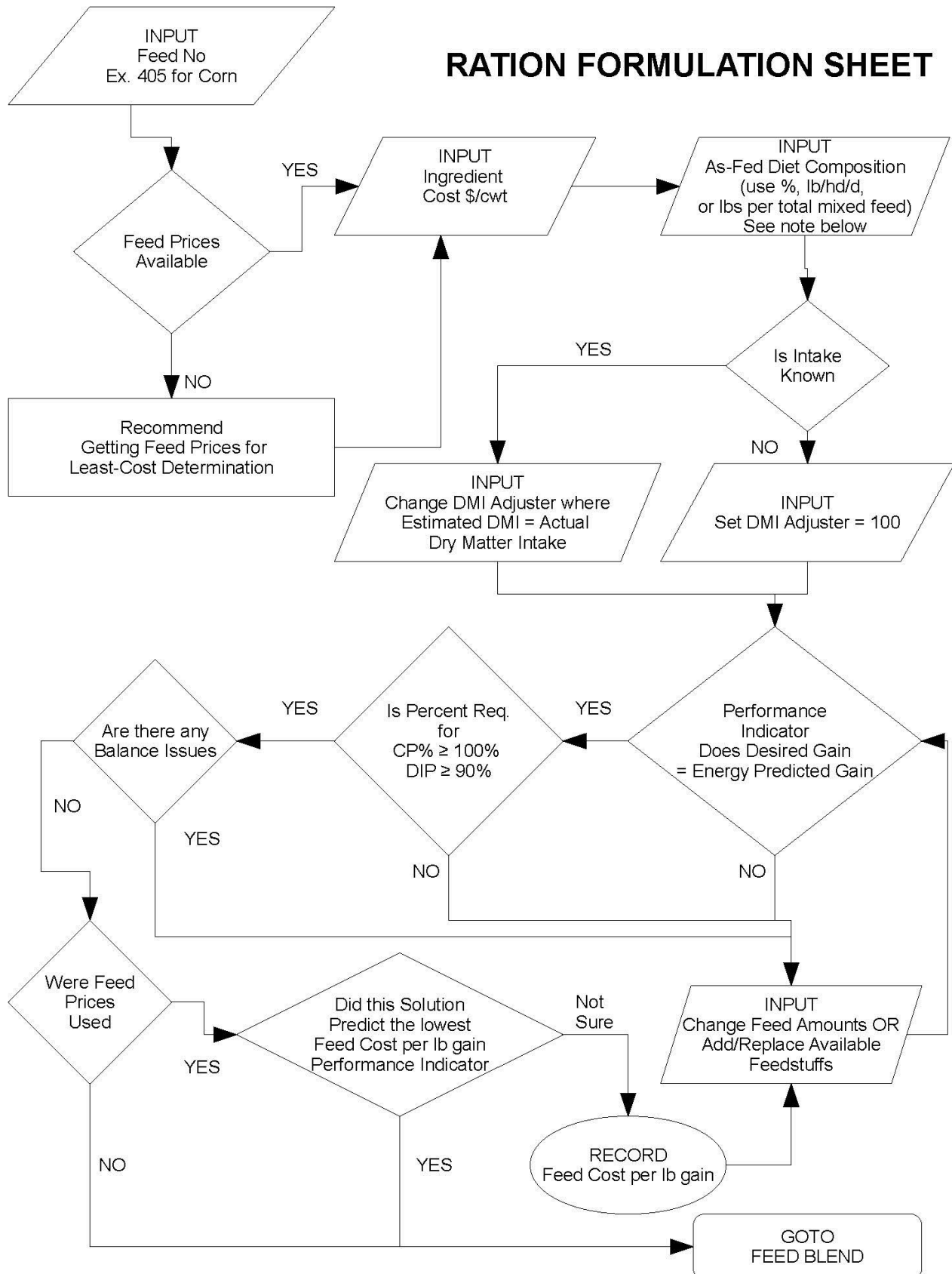
## GROWER RATION BALANCER FLOWCHART



## FEEDS LIST SHEET

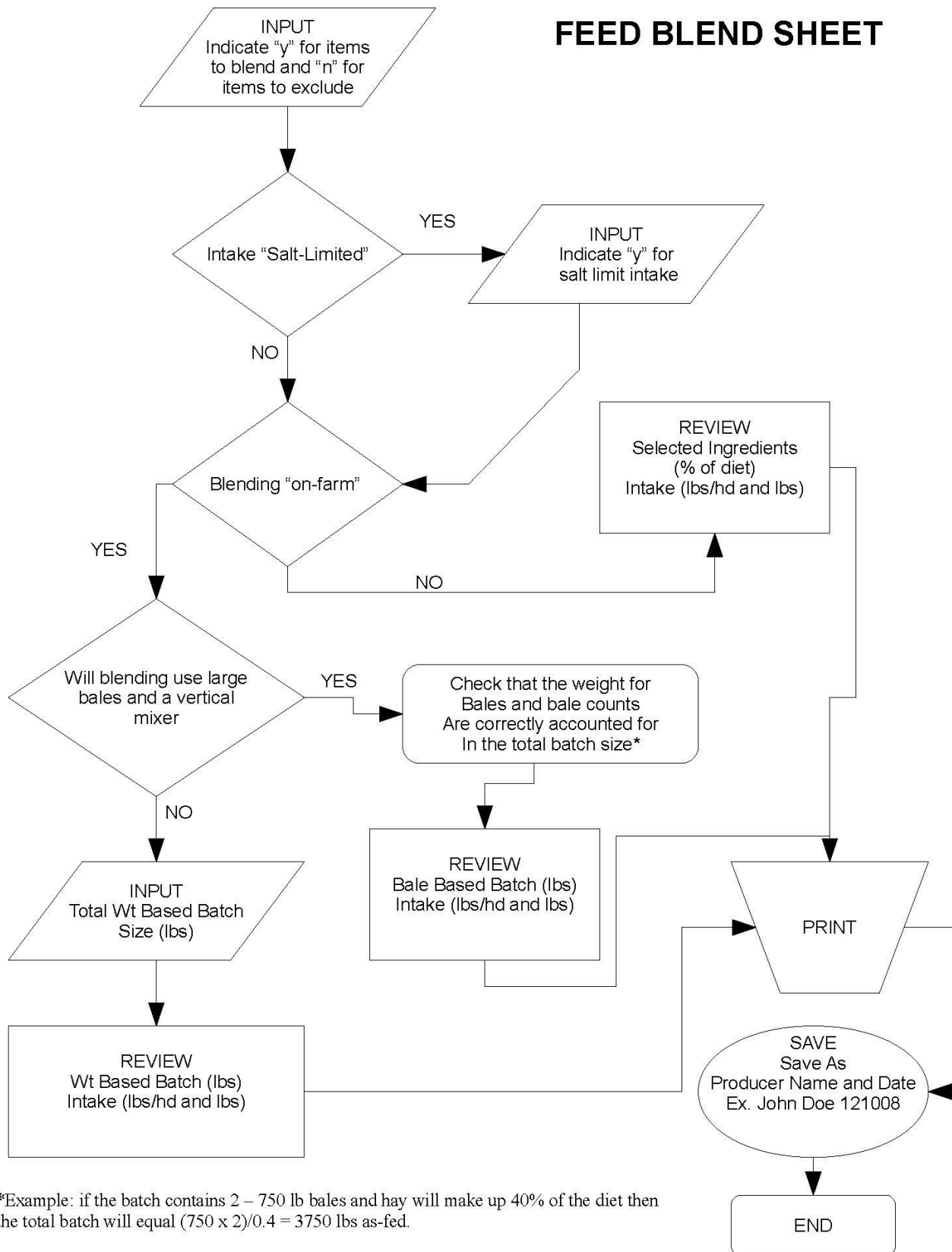


# RATION FORMULATION SHEET



If using lbs/hd/d, dry matter total must = estimated DMI

# FEED BLEND SHEET



University of Arkansas, United States Department of Agriculture and County Governments Cooperating.

The Arkansas Cooperative Extension Service offers its programs to all eligible persons regardless of race, color, national origin, religion, gender, age, disability, marital or veteran status, or any other legally protected status, and is an Affirmative Action/Equal Opportunity Employer.