

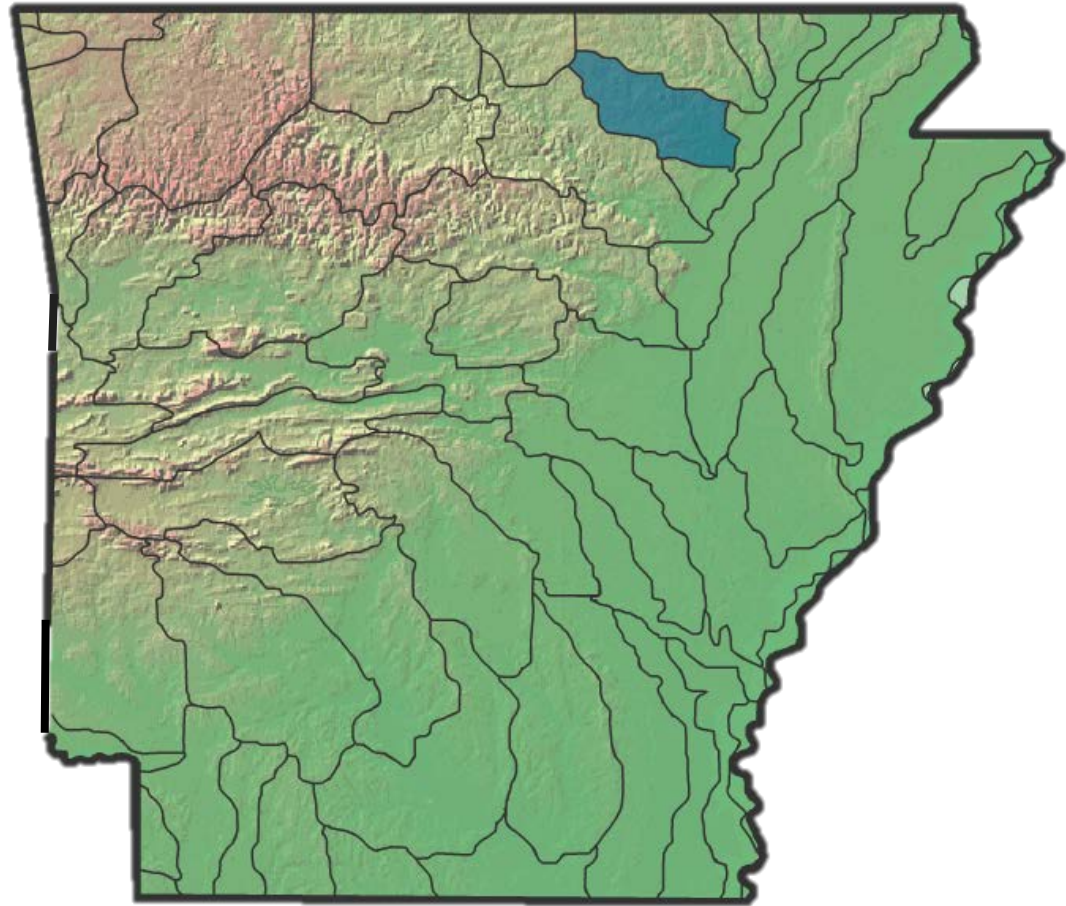
Strawberry River Watershed Monitoring 16-700

Jennifer L. Bouldin, PhD
Ecotoxicology Research Facility
Arkansas State University



Land use

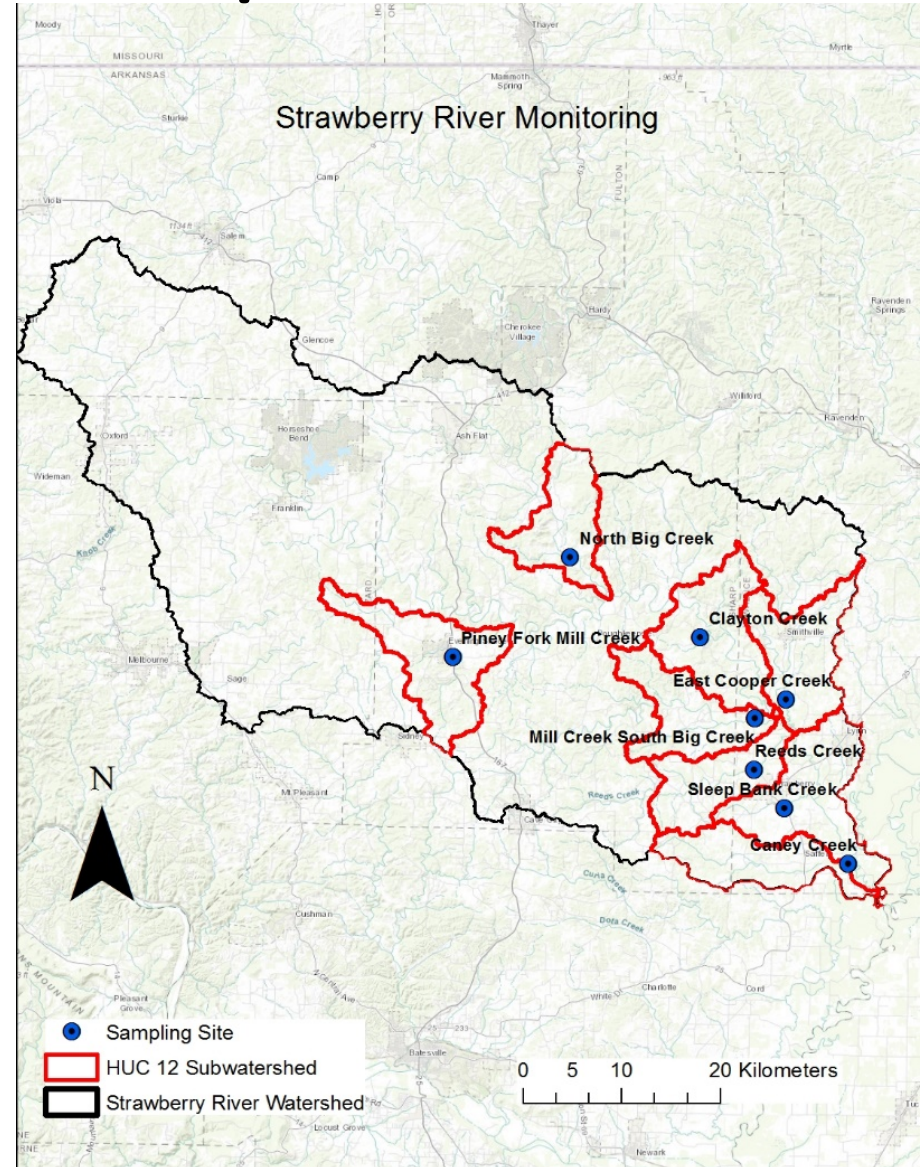
- 56.5% forested
 - 35.2% grassland
 - 1.8% cropland
-
- Determine source of sediment loading by sampling tributaries



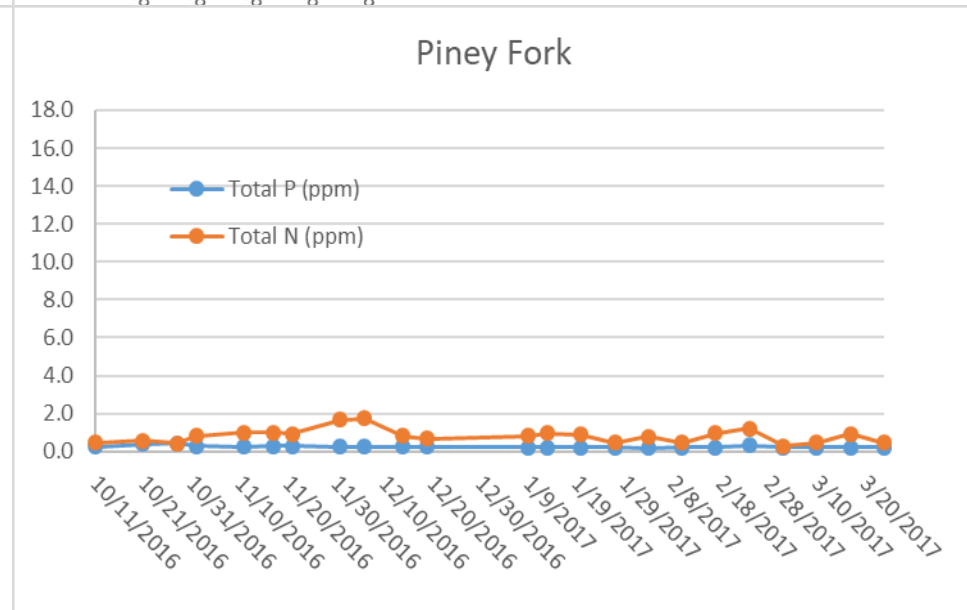
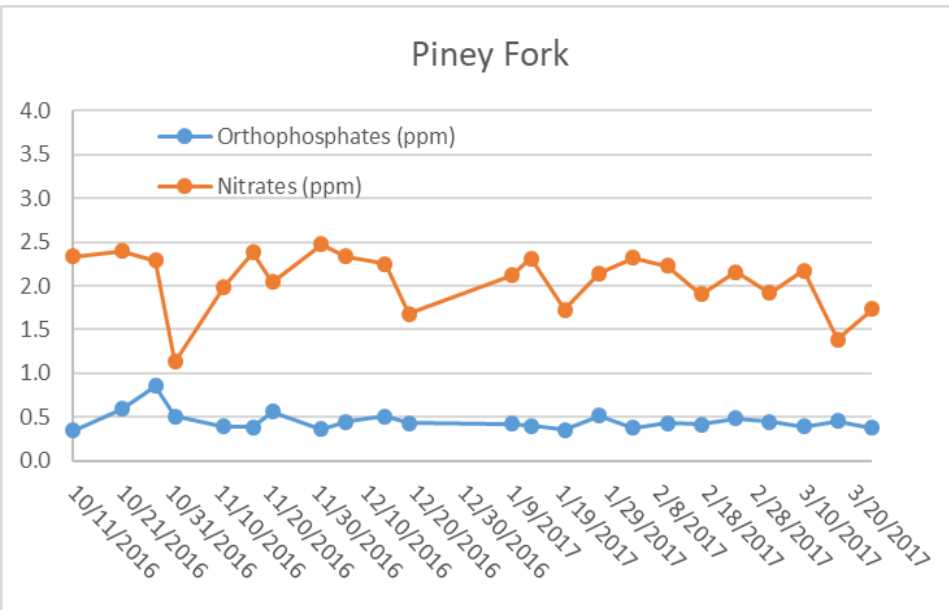
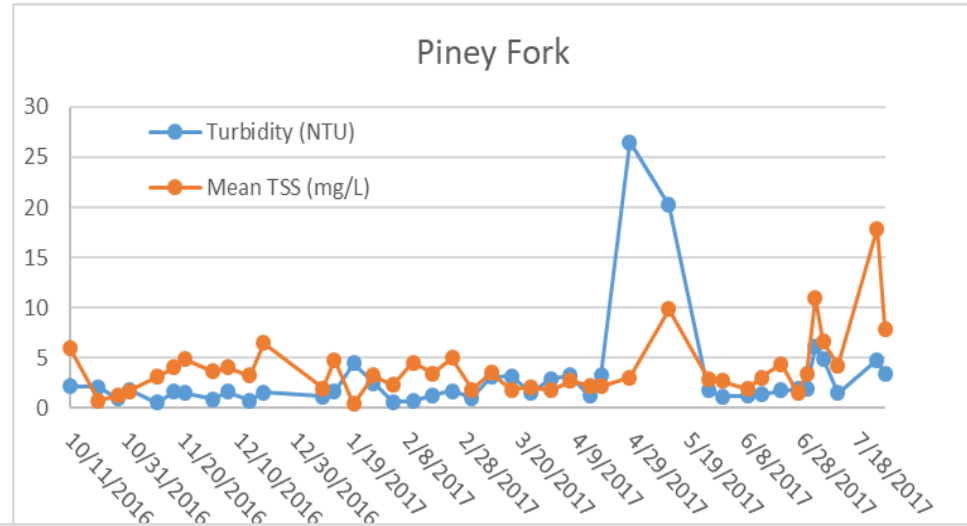
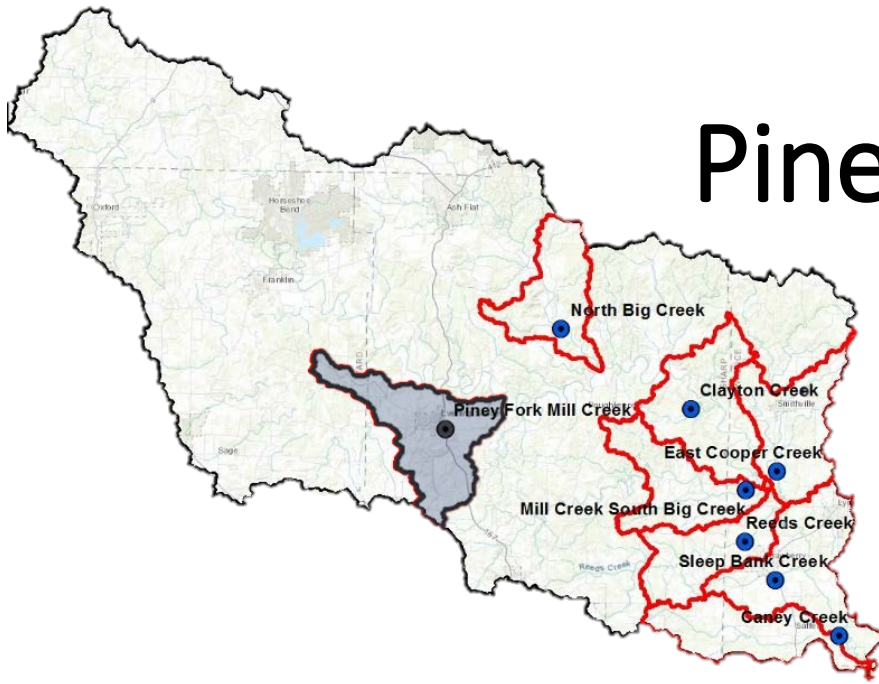
Tributaries sampled

Main tributaries in middle and lower section of watershed

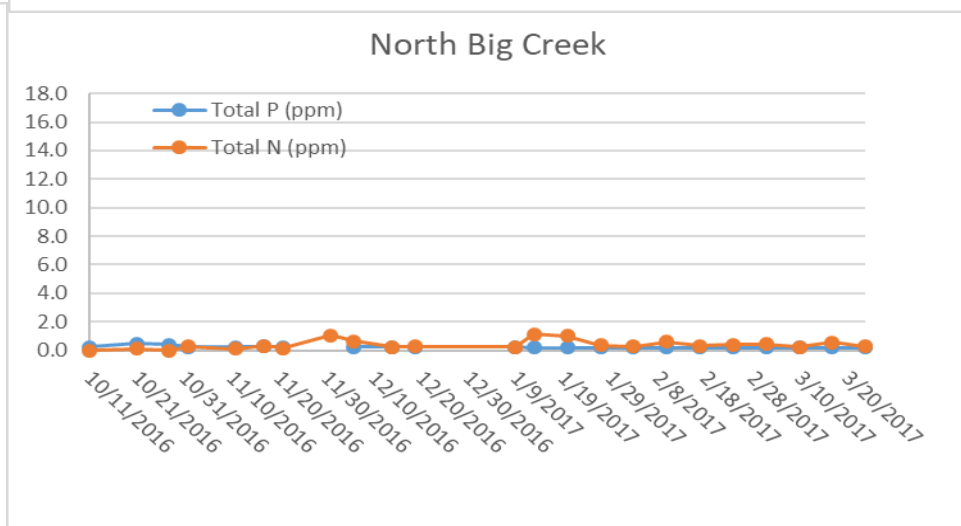
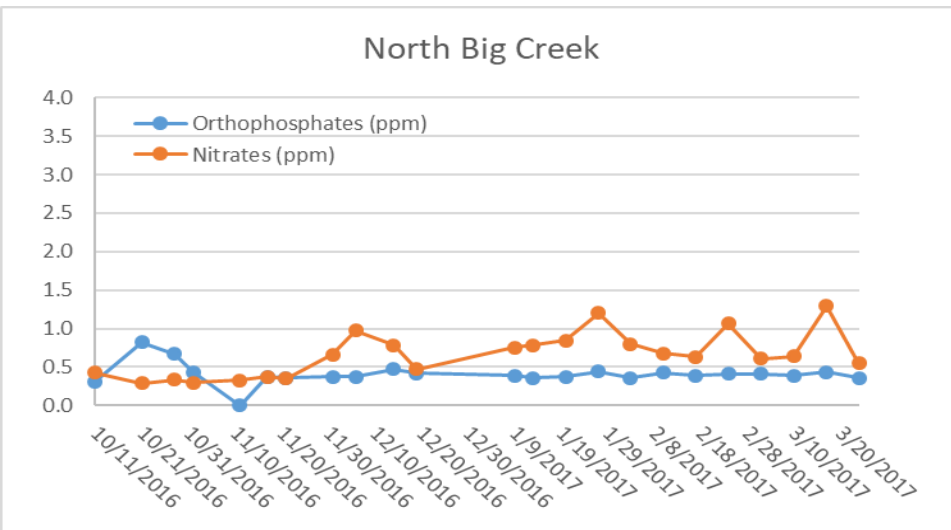
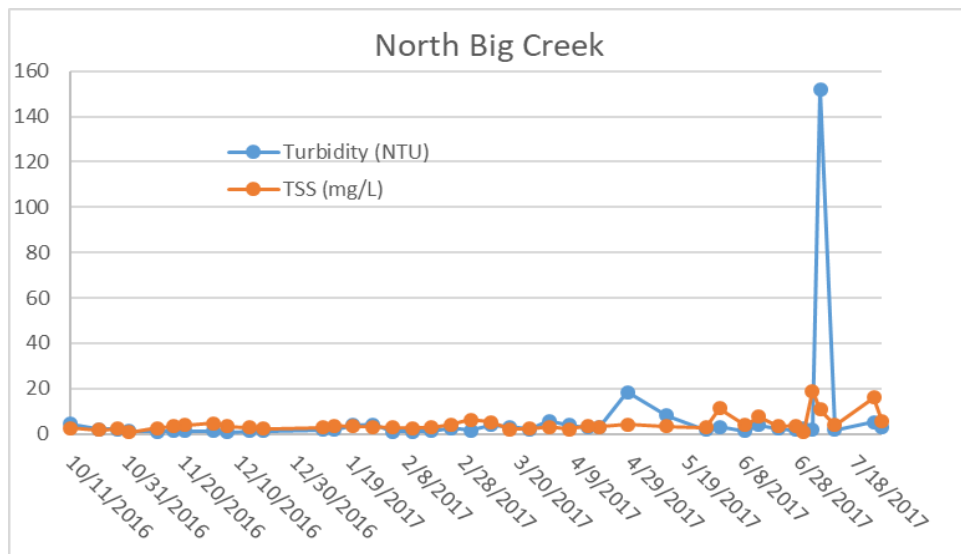
- Weekly sampling



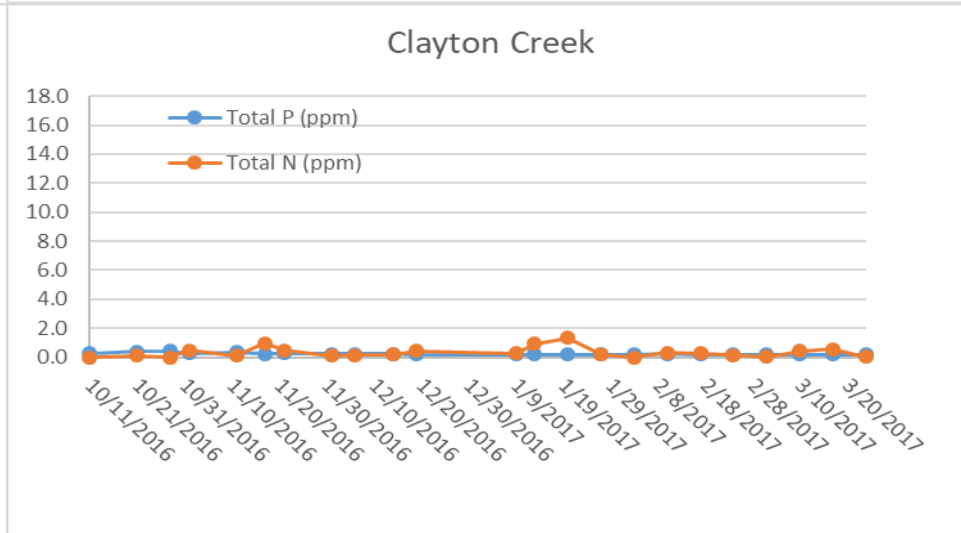
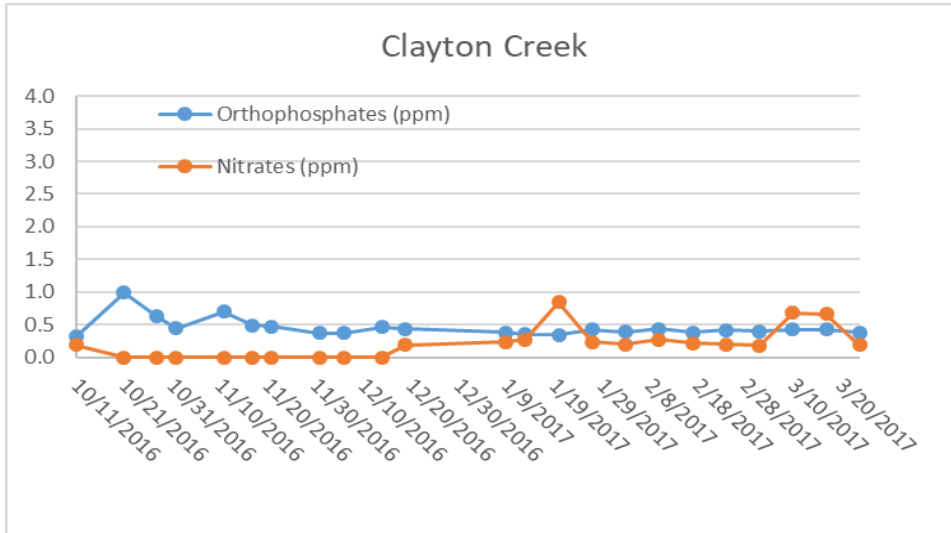
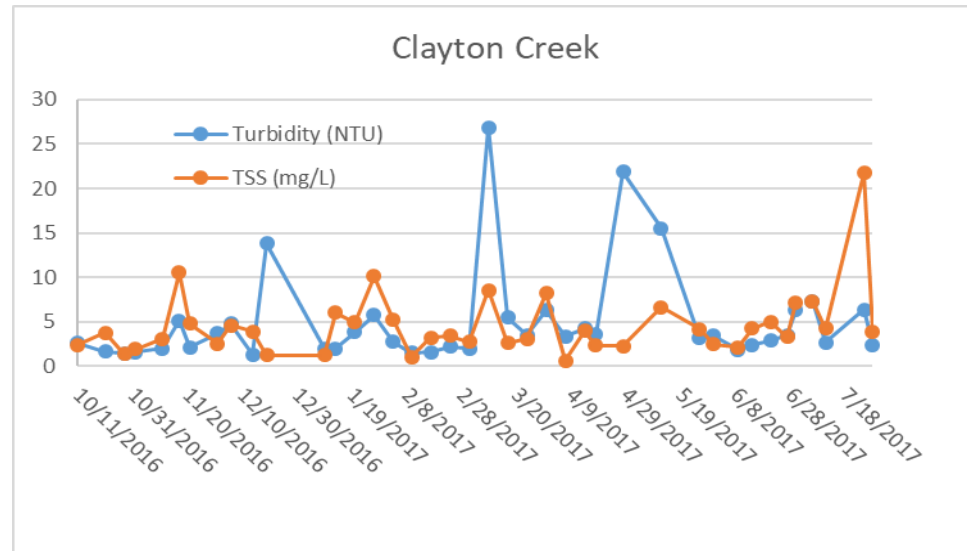
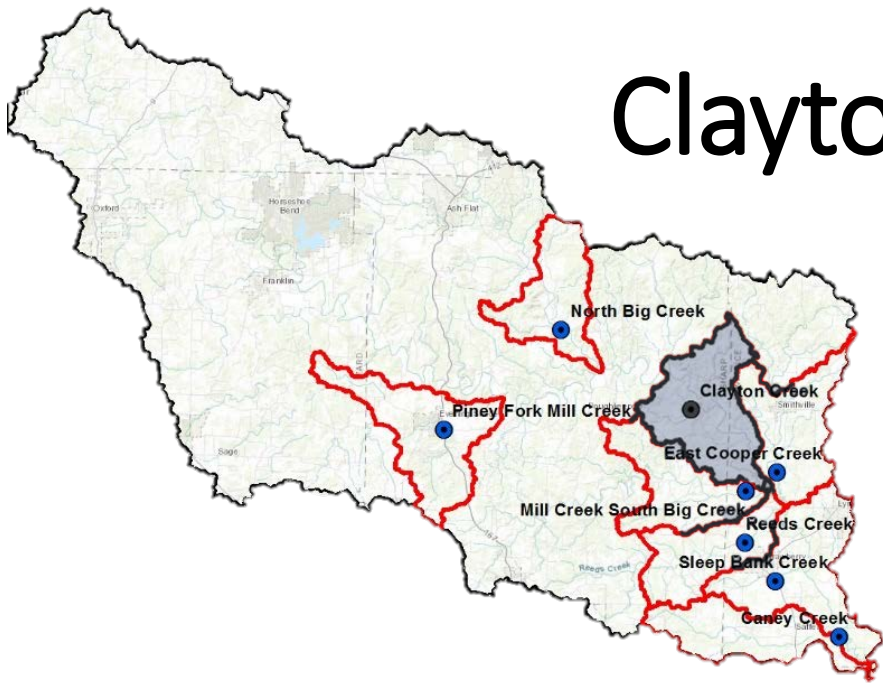
Piney Fork



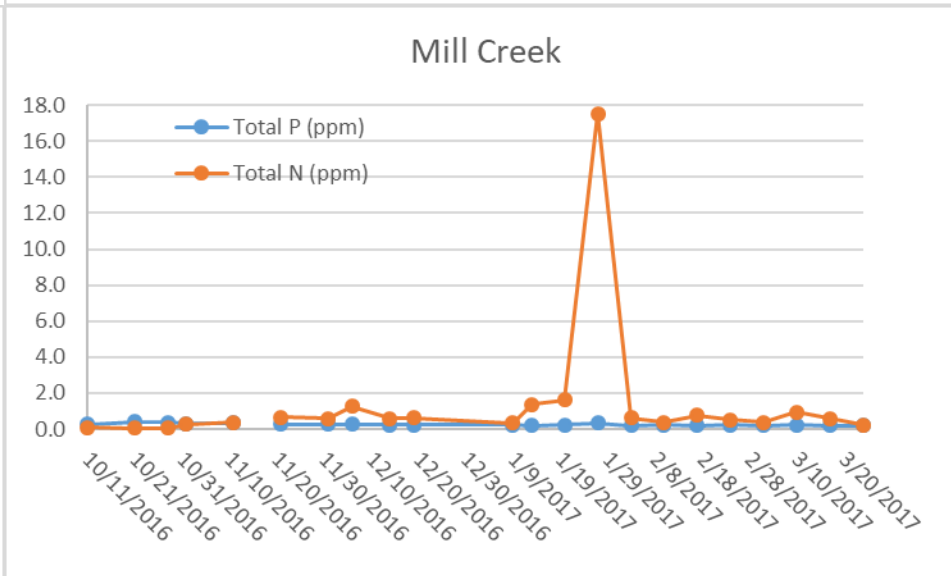
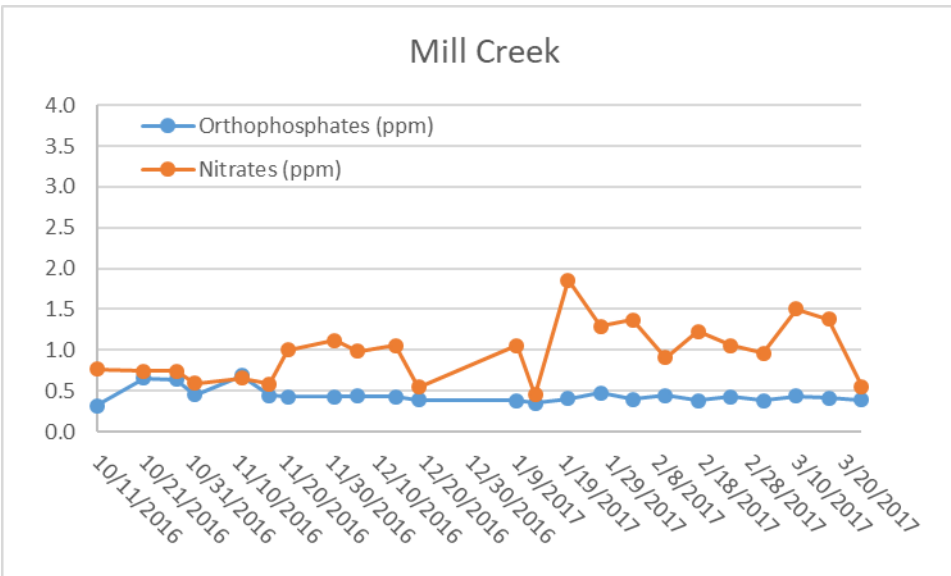
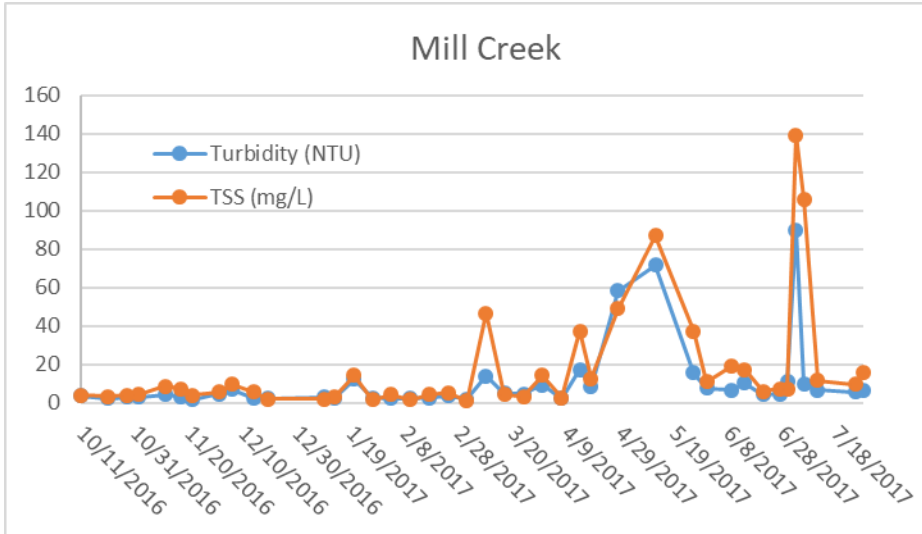
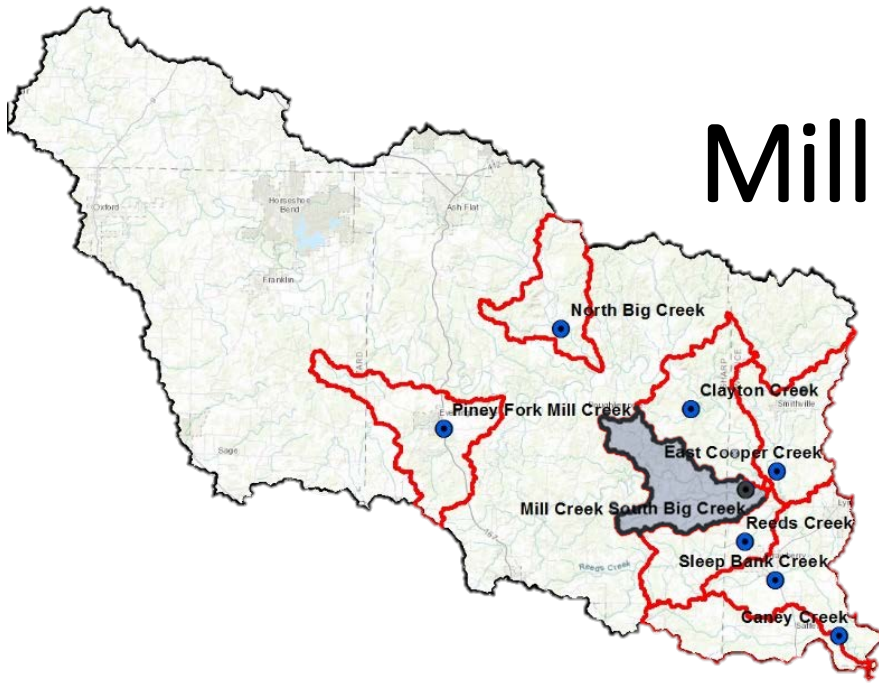
North Big Creek



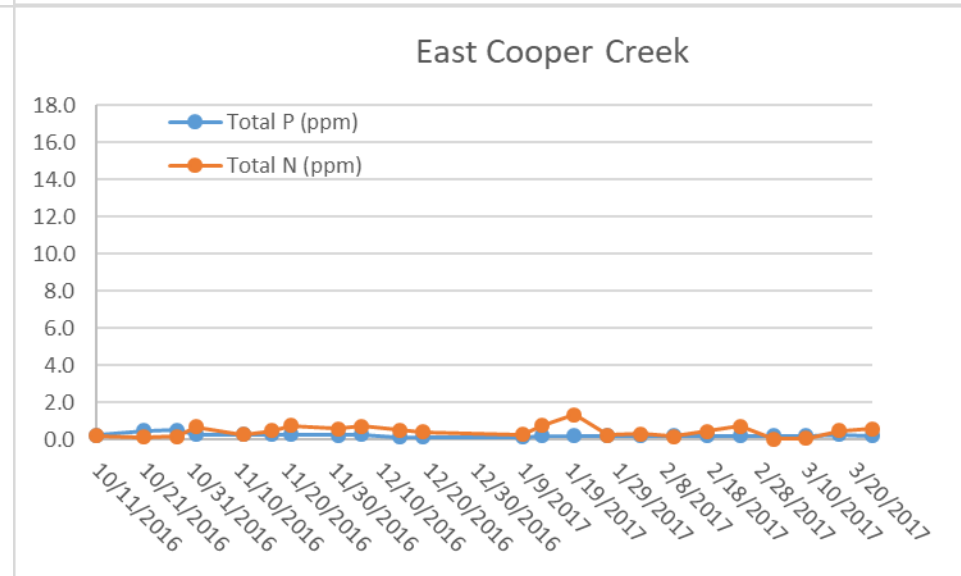
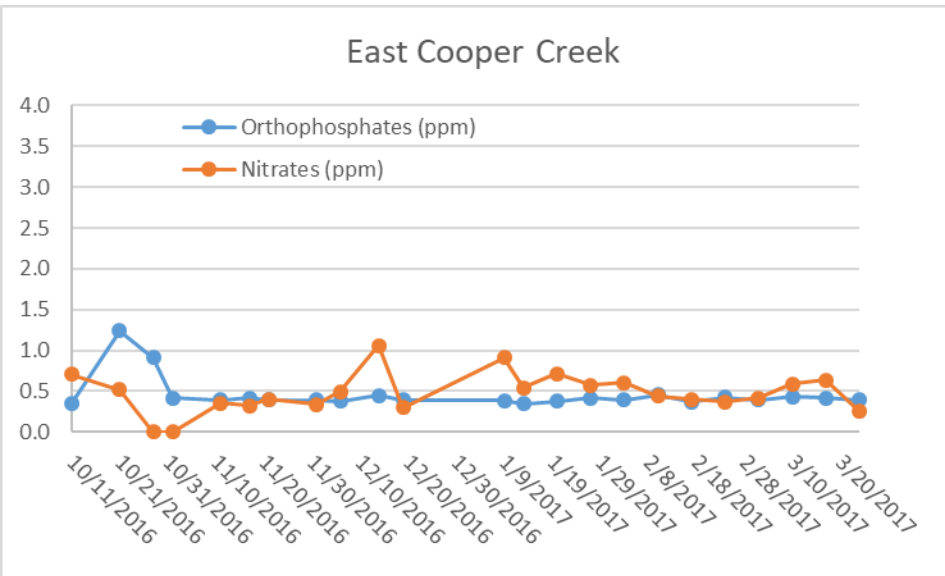
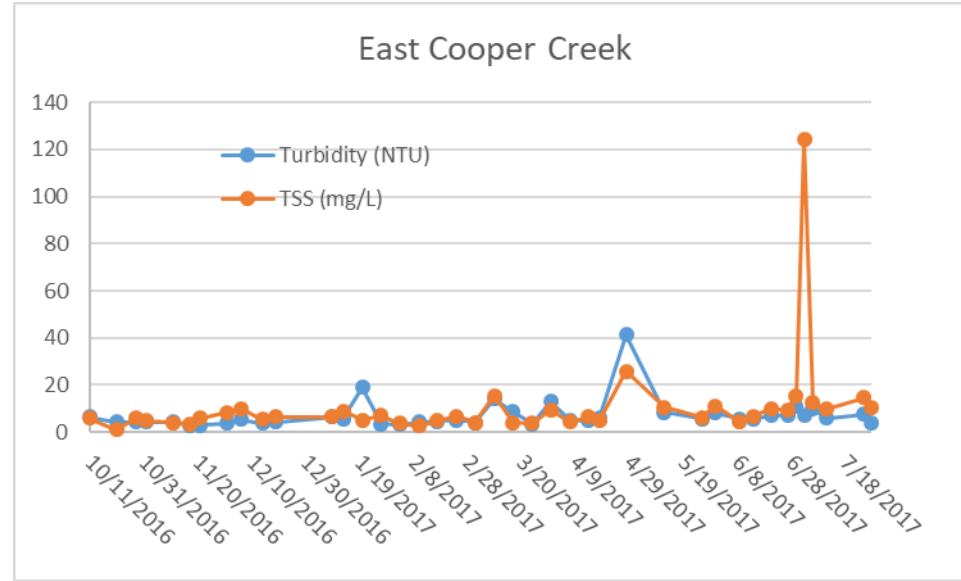
Clayton Creek



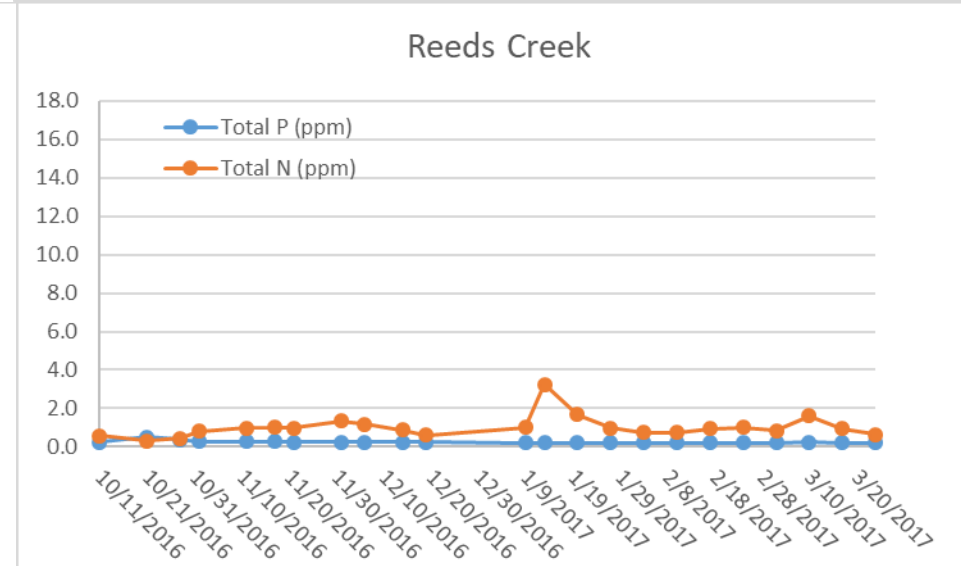
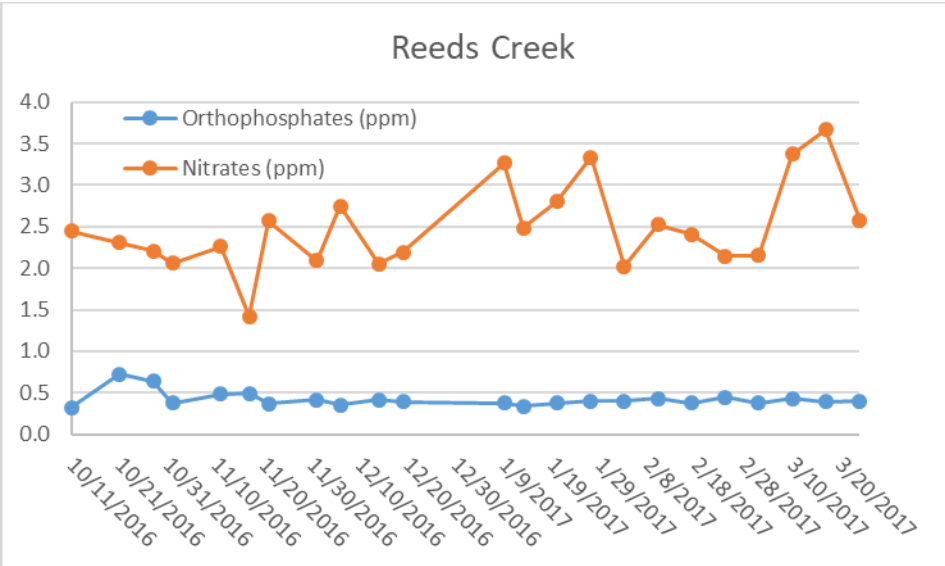
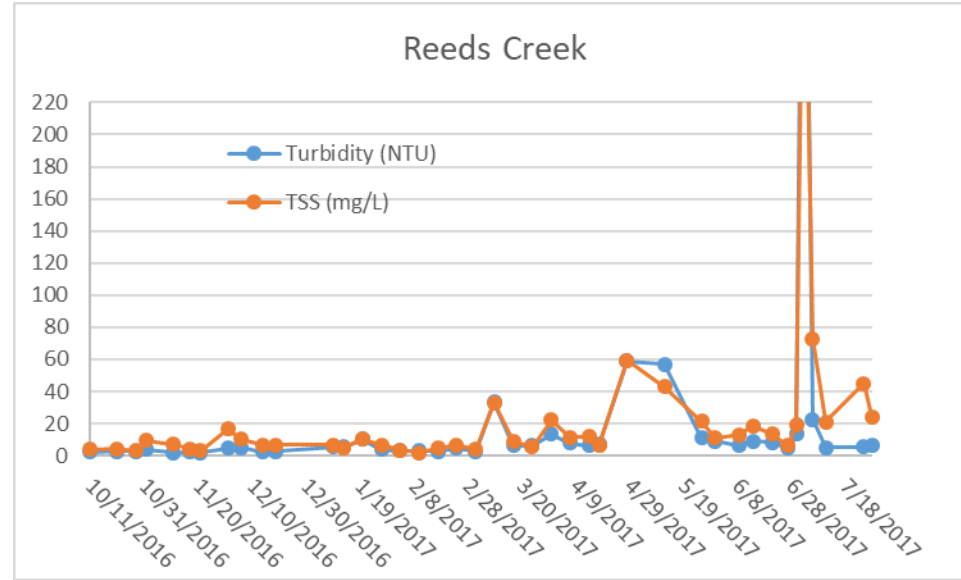
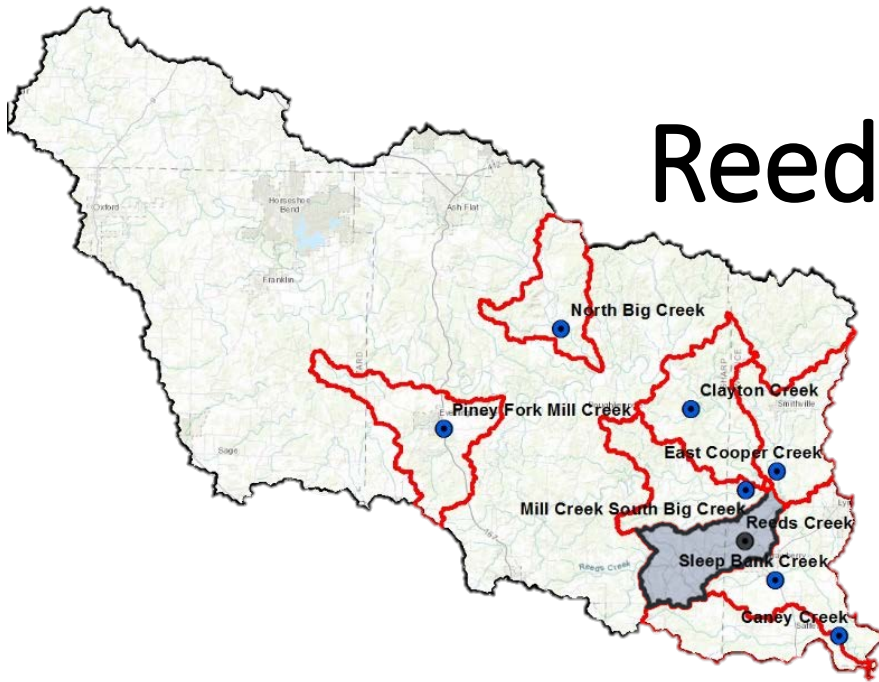
Mill Creek



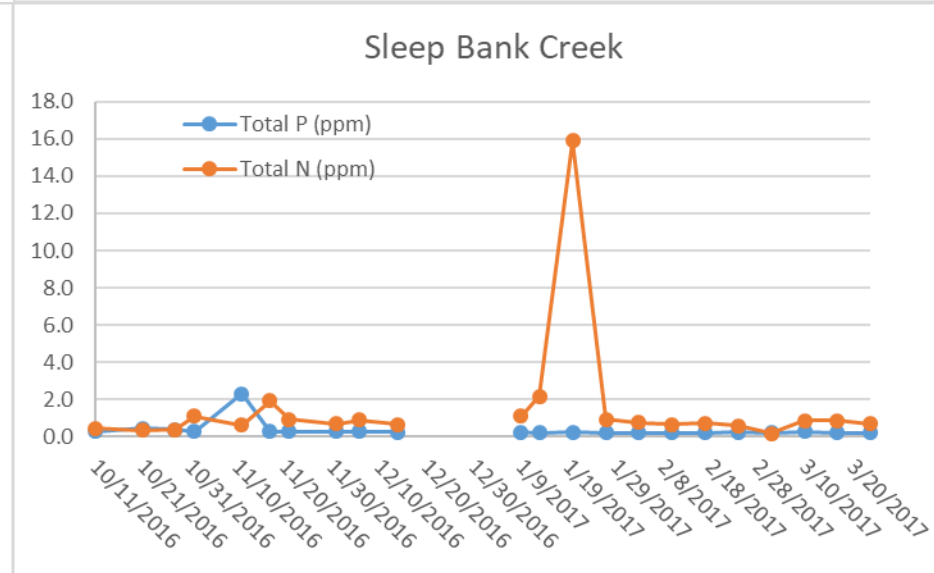
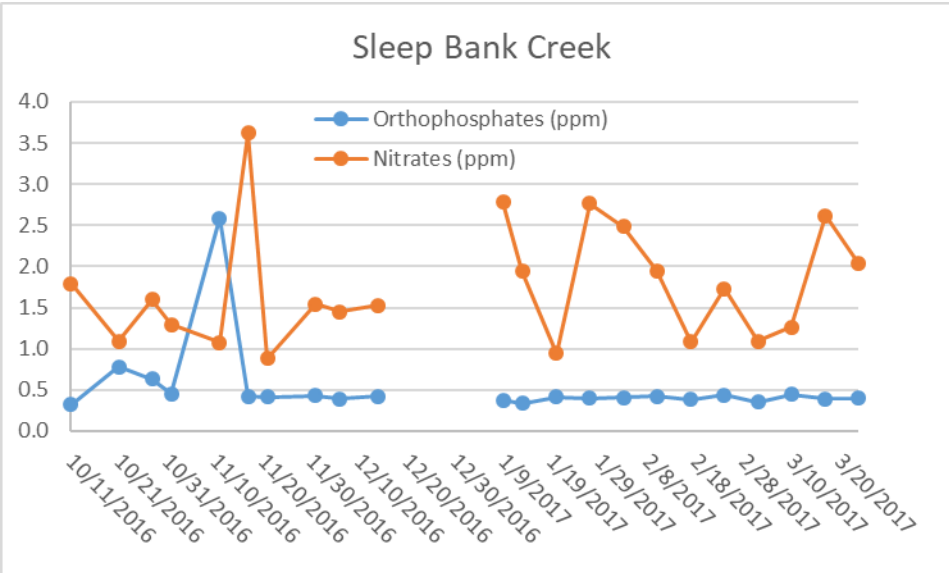
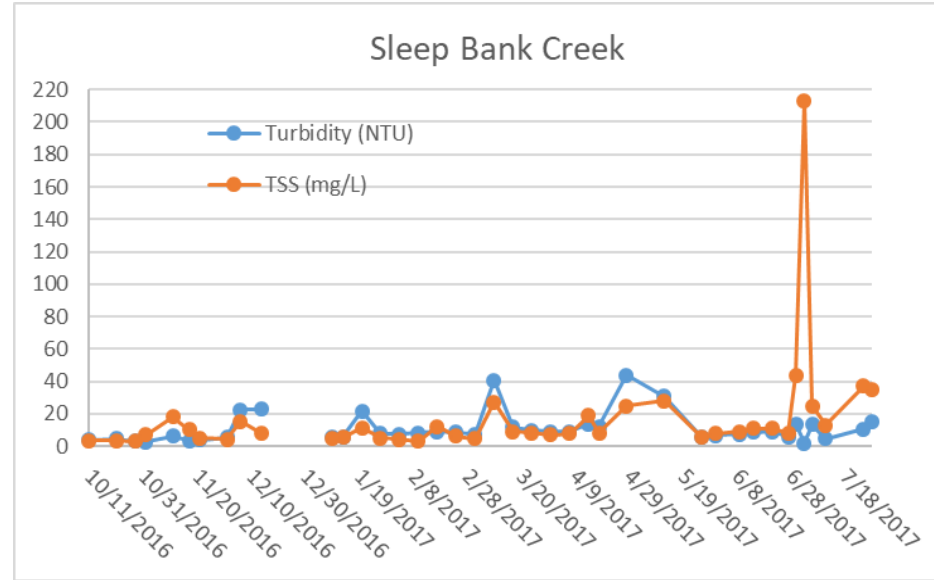
East Cooper Creek



Reeds Creek



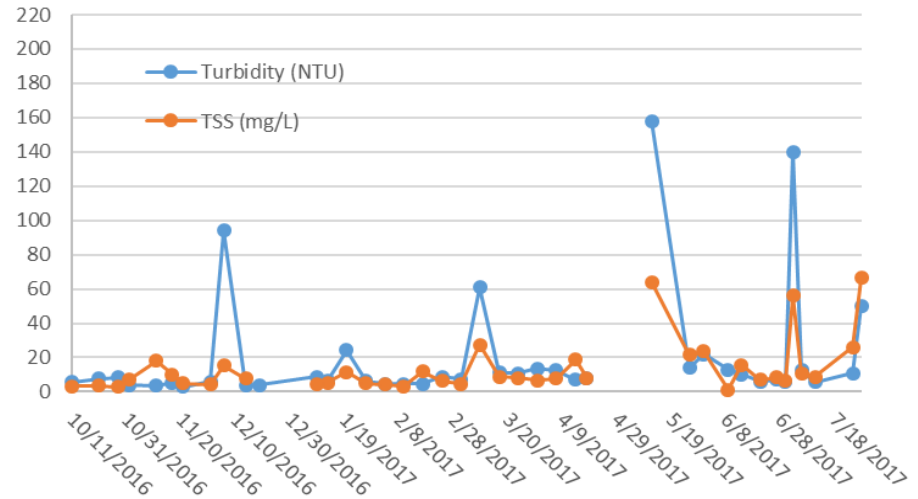
Sleep Bank Creek



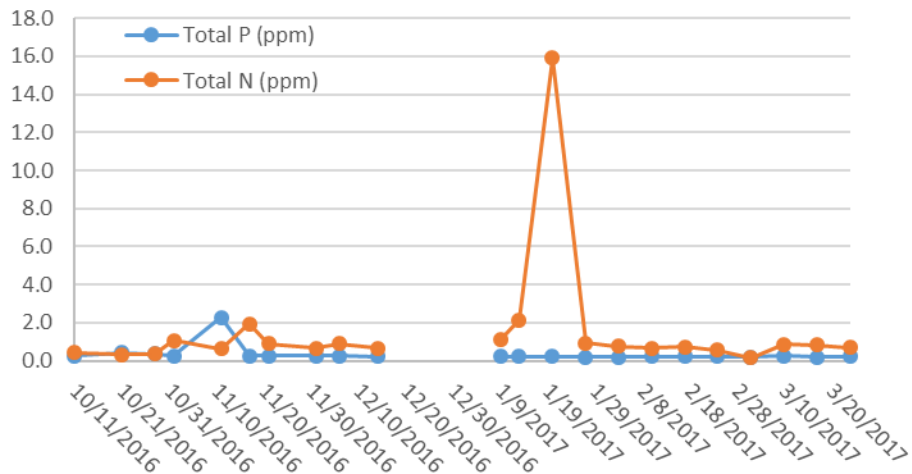
Caney Creek



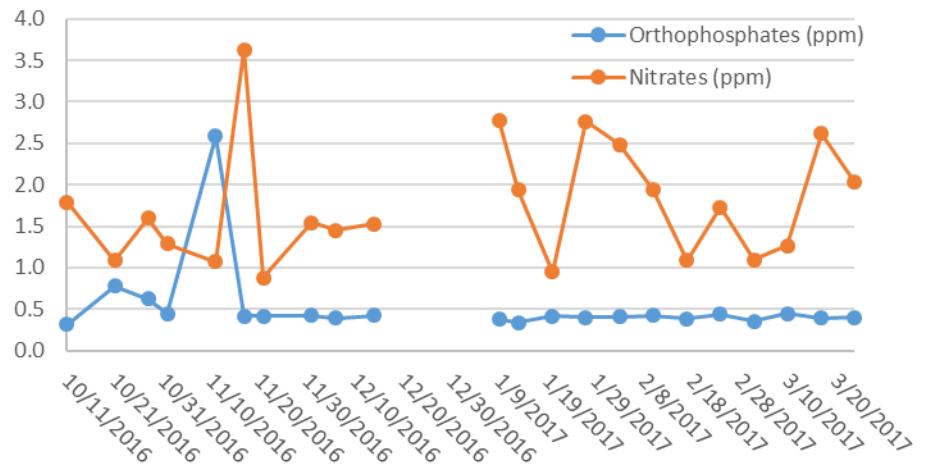
Caney Creek



Caney Creek



Caney Creek



Questions?

