

STRAWBERRY RIVER IMPROVEMENT PROJECT



STRAWBERRY RIVER WATERSHED

SHARP COUNTY

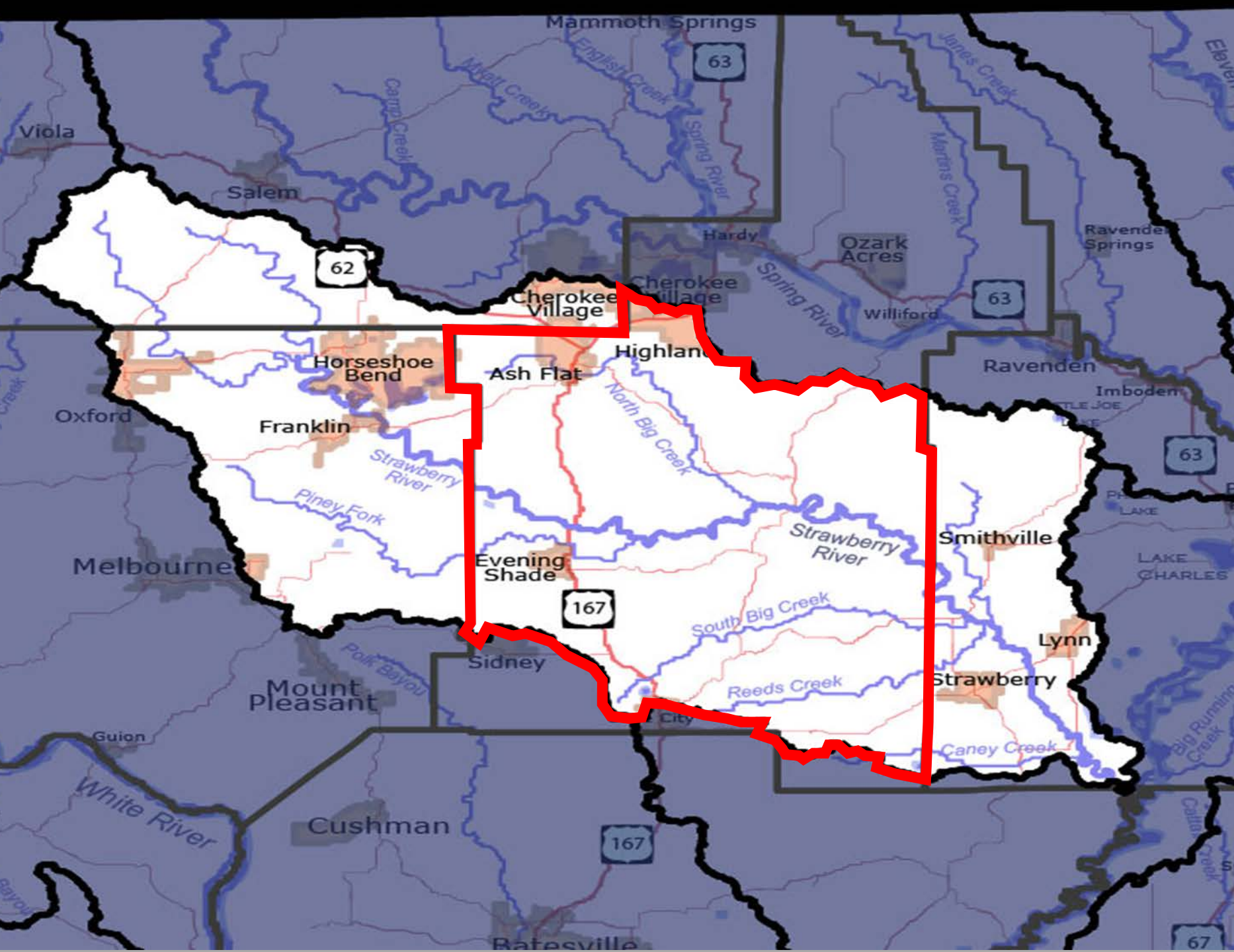
OCTOBER 1, 2016- OCTOBER 1, 2019

CODY STROUD

STRAWBERRY RIVER WATERSHED

- **RED OUTLINE** –
WATERSHED
WITHIN SHARP
COUNTY

- 492,160 ACRES ACROSS 4 COUNTIES
- COVERS APPROXIMATELY 229,600 ACRES IN SHARP COUNTY
- ABOUT 47% OF THE TOTAL WATERSHED



GOALS

- **PROVIDE TECHNICAL ASSISTANCE THAT PROMOTES WATERSHED IMPROVEMENT AND IMPROVES WATER QUALITY**
- **IMPROVE KNOWLEDGE/AWARENESS OF WATERSHED; OUTREACH WITHIN COMMUNITY**
- **ENHANCE FARM PRODUCTIVITY BY INSTALLING SELECTED BEST MANAGEMENT PRACTICES**
- **IMPLEMENT COST-SHARE PRACTICES SPECIFIC TO RESOURCE CONCERNS**

TECHNICAL ASSISTANCE

- **70 PLANS WRITTEN OVER 9,788.4 ACRES**
- **19 OF THOSE PLANS PRODUCING CONTRACTS**
- **758 CONTRACTED ACRES**

- **OTHER PROGRAMS AVAILABLE; MRBI, EQIP, DISTRICT**
- **QUESTIONS AT THE COFFEE SHOP**

KNOWLEDGE/AWARENESS

- PUBLIC MEETINGS, WORD OF MOUTH
- LEARNING CURVE, EXPECTATIONS
- 1ST YEAR: GAINING INTEREST



COMMON RESOURCE CONCERNS

- **OVERGRAZING, SOIL & SOIL QUALITY LOSS, COMPACTION, INADEQUATE FORAGE**
- **UNDESIRABLE PLANT CONDITION, LOW PRODUCTIVITY & HEALTH**
- **EXCESS RUNOFF IN HIGH USE AREAS, WATER QUALITY DEGRADATION**
- **INADEQUATE LIVESTOCK WATER**
- **EXCESSIVE SEDIMENT IN SURFACE WATER**

BEST MANAGEMENT PRACTICES AVAILABLE

- BRUSH MANAGEMENT \$15.75/AC
- HERBACEOUS WEED CONTROL \$16.95/AC
- POND \$1.61/CUBIC YARD
- FENCE \$0.97/FT
- FORAGE AND BIOMASS \$109.81-172.71/AC
- LIVESTOCK PIPELINE \$1.07/FT
- PRESCRIBED GRAZING \$14.77-44.15/AC
- HEAVY USE AREA \$0.71/SQ FT
- WATERING FACILITY \$0.67-1.83/GA OR \$467.14/UNIT

BRUSH MANAGEMENT

- 491 ACRES IN CONTRACTS
- 272.4 ACRES PLANNED OUTSIDE OF CONTRACTS
- UNDESIRABLE PLANT CONDITION, LOW PRODUCTIVITY & HEALTH



FENCE

- 25,421' IN CONTRACTS
- 17,863' PLANNED OUTSIDE OF CONTRACTS
- HELP COMBAT OVERGRAZING, INADEQUATE FORAGE
- IMPROVE SOIL & SOIL QUALITY LOSS, COMPACTION



WATERING FACILITY, HUA, PIPELINE

- 3 CONTRACTED WATERING FACILITIES
- 1,432' OF LIVESTOCK PIPELINE
- 900 SQ FT OF HEAVY USE AREAS; 600 SQ FT PLANNED OUTSIDE OF CONTRACTS
- EXCESSIVE SEDIMENT IN SURFACE WATER
- INADEQUATE LIVESTOCK WATER



PRESCRIBED GRAZING

- 3,003.7 PLANNED ACRES OF PRESCRIBED GRAZING
- OVERGRAZING, SOIL & SOIL QUALITY LOSS, COMPACTION, INADEQUATE FORAGE
- UNDESIRABLE PLANT CONDITION, LOW PRODUCTIVITY & HEALTH
- EXCESS RUNOFF IN HIGH USE AREAS, WATER QUALITY DEGREDEATION



FORAGE AND BIOMASS PLANTING

- 267 ACRES OF PLANTING CONTRACTED
- MOSTLY FESCUE; BERMUDA & CLOVER
- 668.9 ACRES PLANNED OUTSIDE OF CONTRACTS
- INADEQUATE FORAGE
- UNDESIRABLE PLANT CONDITION, LOW PRODUCTIVITY & HEALTH



COST-SHARE PROVIDED TO DATE

- **19 CONTRACTS WORTH \$71,799.37**
- **\$71,799.37 OF \$75,000 ALLOCATED (95.7%)**
- **\$3,200.63 REMAINING OF FUNDING**
- **9 CONTRACTS COMPLETED, 1 PARTIALLY COMPLETED FOR A TOTAL OF \$26,587.38 PAID (35.4%)**
- **PROJECTED APPROXIMATELY \$180,000 IN KIND MONIES**
- **NUMBERS FOR YEAR 1 OF 3 FOR PROJECT**

THANK YOU....

-USDA NRCS

-PARTICIPATING PRODUCERS

**-ARKANSAS NATURAL RESOURCES COMMISSION 319
PROGRAM**

-ENVIRONMENTAL PROTECTION AGENCY 319 PROGRAM

WE APPRECIATE THE OPPORTUNITY TO PROVIDE THIS GRANT TO THE PRODUCERS OF SHARP COUNTY!

QUESTIONS?

