



United States Department of Agriculture

STATUS OF MRBI

VOLUNTARY CONSERVATION- WORKING?

STRENGTHEN PARTNERSHIPS?

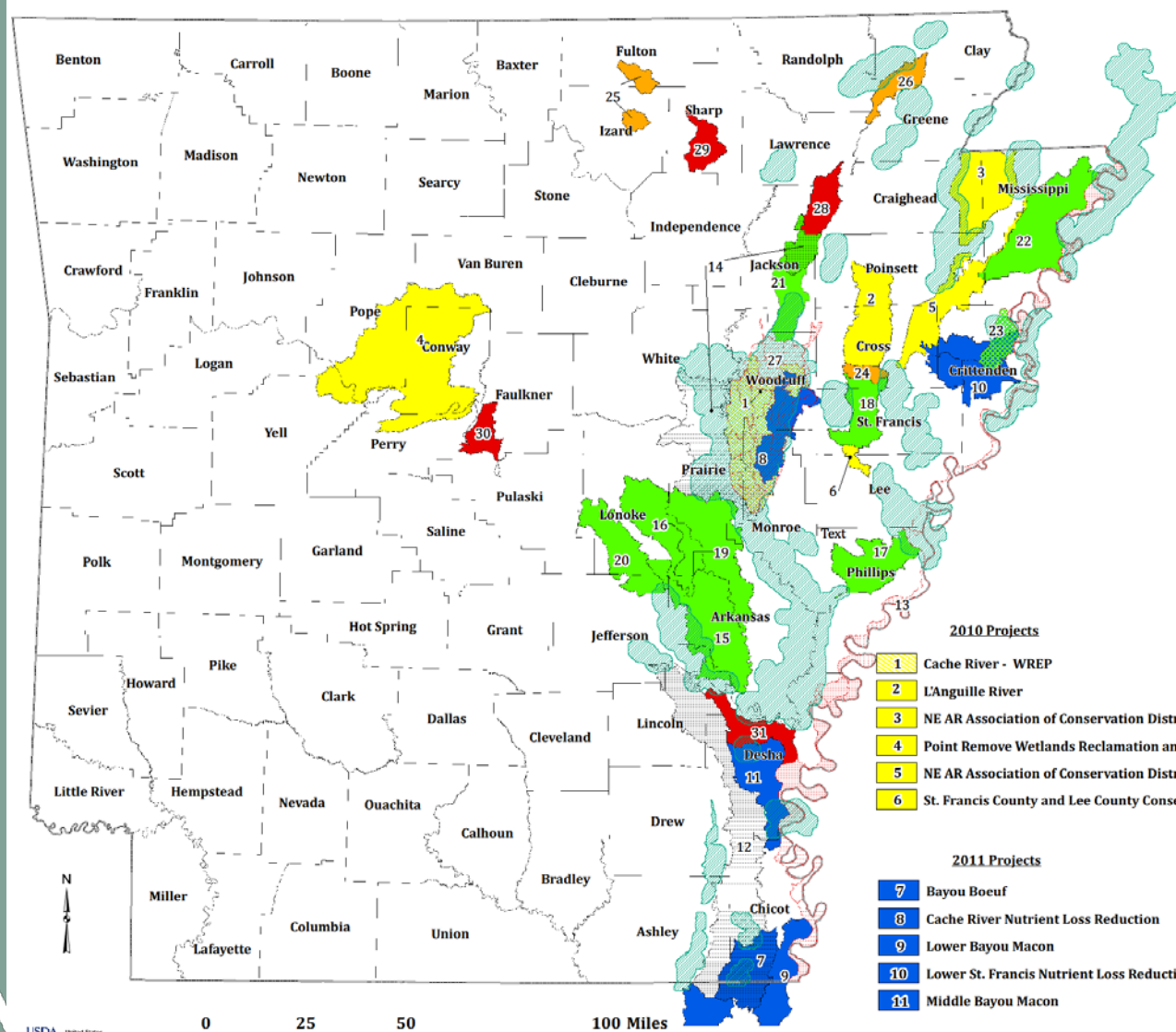
MORE CONSERVATION GETTING ON GROUND?

IMPACT ON LOCAL ECONOMY?



USDA is an equal opportunity provider and employer

Mississippi River Basin Healthy Watershed Initiative Projects





MRBI PROJECTS 2010-2016

Project	# of contracts	Contract Acres	Obligated Dollars	Producer Contribution
Cache Willow Podo	8	1,353	\$510,046	\$167,000
Middle Strawberry	12	1,339	\$198,982	\$66,328
Tupelo Bayou Beaverdam Creek	3	2,100	\$373,783	\$124,594
Upper Bayou Macon	8	2,880	\$799,899	\$266,633
Caney Creek	12	911	\$842,542	\$280,847
Strawberry River	37	6,506	\$981,596	\$654,397
Upper Cache River	18	3,343	\$1,321,319	\$440,439
Bayou Meto Arkansas County	86	35,330	\$9,144,908	\$3,048,302
Bayou Meto Middle	118	28,498	\$10,374,884	\$6,916,589
Big River Watershed	57	5,907	\$2,658,349	\$886,116
East Arkansas Enterprise-L'Anguille	67	11,867	\$3,061,968	\$1,020,656
Grand Prairie	135	42,682	\$9,615,614	\$6,410,409
Lower Arkansas Upper	161	35,984	\$9,004,405	\$6,002,937
Middle Cache River	99	14,198	\$4,530,190	\$1,510,063
Tyronza River Watershed	61	11,513	\$3,937,597	\$1,312,532
Wapanocca Lake Watershed	82	10,946	\$982,011	\$327,337
Bayou Boeuf	33	12,226	\$1,611,901	\$537,300
Cache River	31	7,678	\$1,733,452	\$577,817
Lower Bayou Macon	18	13,792	\$1,370,175	\$456,725
Lower St. Francis	131	20,651	\$3,997,291	\$1,332,430
Middle Bayou Macon	110	22,771	\$5,813,101	\$1,937,700
L'Anguille River	88	35,539	\$3,507,951	\$1,169,317
NE AR AACD Little River Ditches	117	17,918	\$3,247,720	\$1,082,573
NE AR AACD Lower St. Francis	112	23,370	\$2,581,341	\$860,447
Lee and St. Francis Outlet Larkin Creek	45	5,317	\$1,445,458	\$481,819
Point Remove	189	51,691	\$8,629,636	\$2,876,545
Total	1838	426,310	\$92,276,119	\$40,747,852

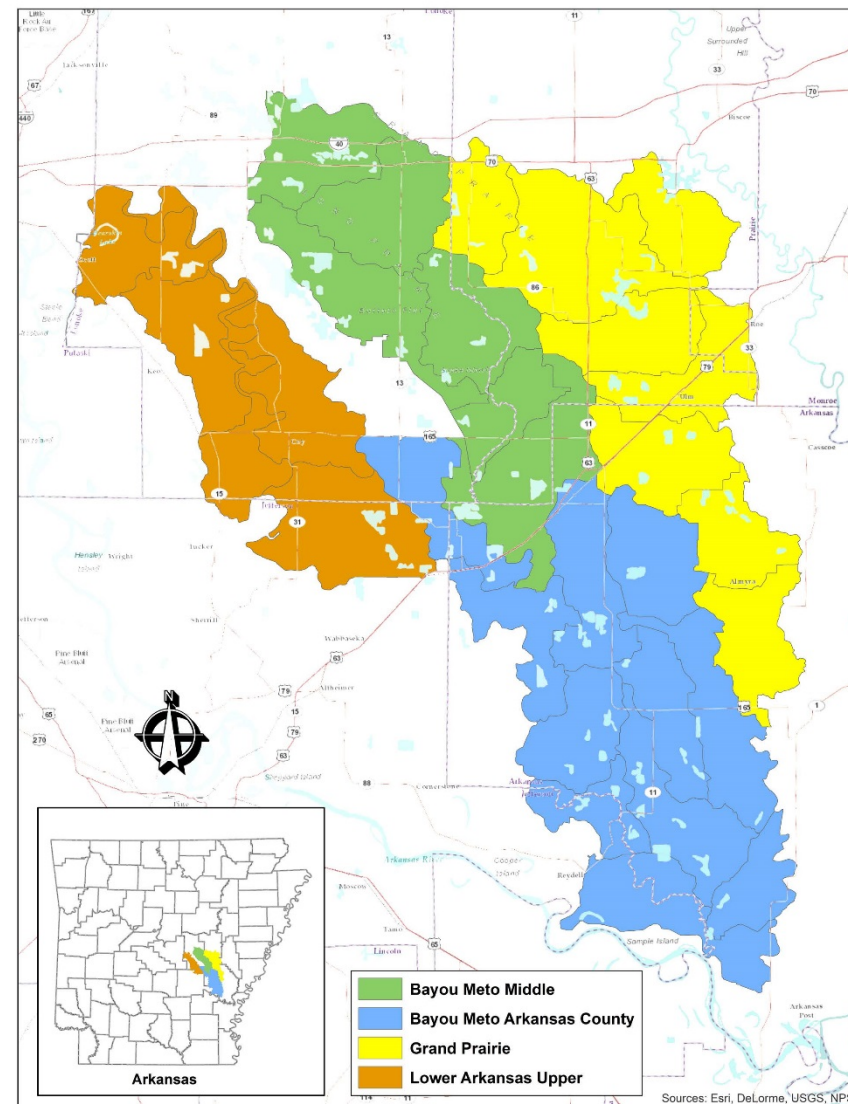




United States Department of Agriculture

SUMMARY OF 4 MRBI PROJECTS-TARGETING

Project	Contracts	Acres treated	Obligated Funds
Bayou Meto Arkansas Co.	86	35,330	\$9,144,908
Bayou Meto Middle	118	28,498	\$10,374,884
Grand Prairie	135	42,682	\$9,615,614
Lower Arkansas Upper	161	35,984	\$9,004,405
	500	142,494	\$38,139,811



USDA is an equal opportunity



208,755 tons of sediment saved=Busch Stadium 32 feet of soil.

1,206, 227 lbs. of Nitrogen and Phosphorus has been kept out of the waterways. This equates to 360,387 bags of 13-13-13 fertilizer.

129.6 billion gallons of groundwater conserved per year =covering Monroe County with 1 foot of water





United States Department of Agriculture

PARTNERS



USDA is an equal opportunity provider and employer





United States Department of Agriculture

TAILWATER RECOVERY



USDA is an equal opportunity provider and employer



United States Department of Agriculture

COVER CROP



USDA is an equal opportunity provider and employer



United States Department of Agriculture



USDA is an equal opportunity provider and employer



United States Department of Agriculture



USDA is an equal opportunity provider and employer





NUTRIENT MANAGEMENT





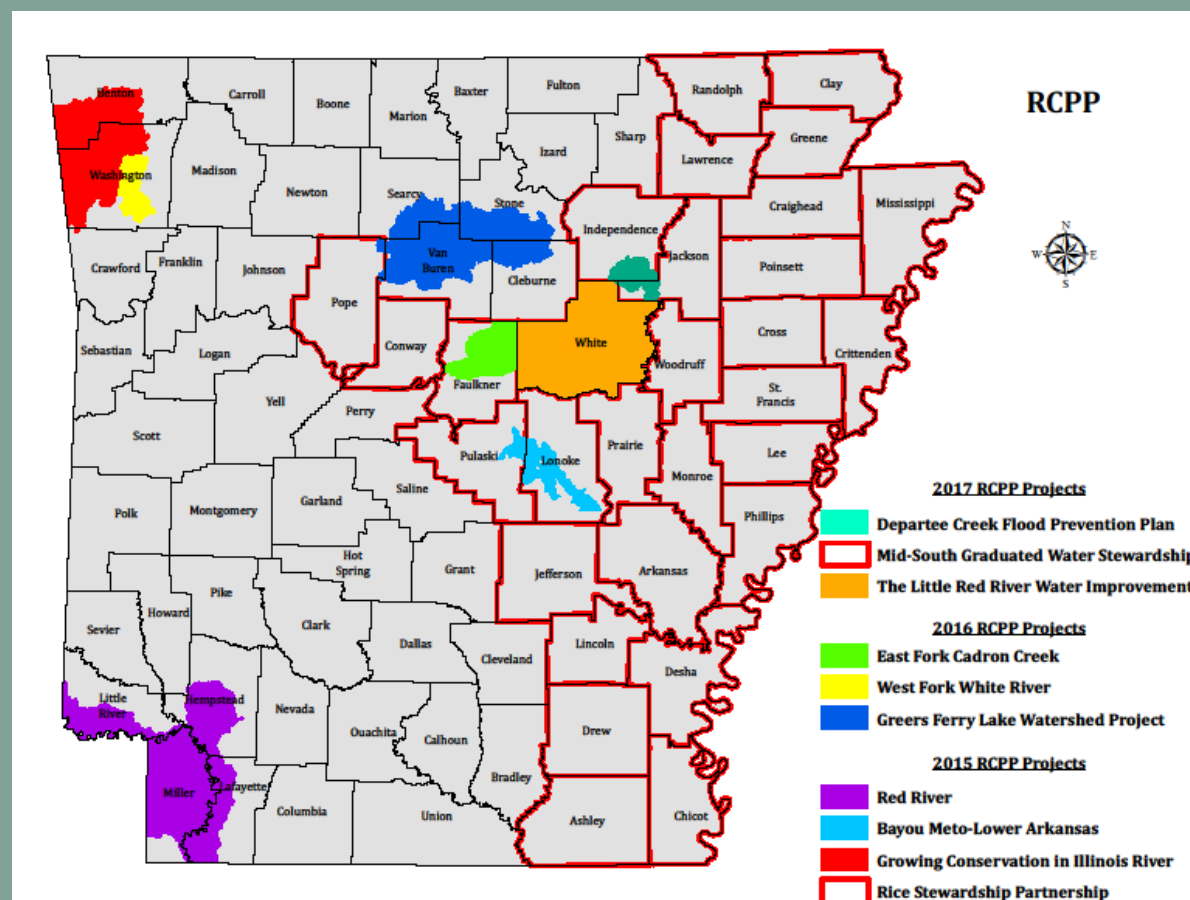
- Results: MRBI has shown that focused water quality efforts in high priority areas can be effective in building strong partners, increasing trust and partnerships with landowners and farmers, and getting more conservation systems on the ground.



REGIONAL CONSERVATION PARTNERSHIP PROGRAM

Arkansas conservation partners have 10 RCPP projects:

- 4 State-\$4.2 million
- 2 National-\$17 million
- 4 Critical Conservation Area (CCA)-\$7.4 million
- Total-\$28.6 million



EXPECTED WATER QUALITY RESULTS

- Reduced nitrogen and phosphorus loading into waterways

- Reduced sediment from sheet & rill erosion

- Reduced sediment from irrigation-induced erosion





Project Sponsors	Monitoring Partners
Local Conservation Districts	University of Arkansas
Bayou Meto Water Mgmt	University of AR Extension
Ducks Unlimited USA Rice	Arkansas State University
The Nature Conservancy	Agricultural Research Service
IRWP, Little Red River Irrigation District	University of Arkansas at Pine Bluff
RC&D Council	
Departee Creek Watershed Improvement District	





To File a Complaint of Discrimination:

The U. S. Department of Agriculture (USDA) prohibits discrimination in all of its programs and activities on the basis of race, color, national origin, age, disability, and where applicable, sex, marital status, familial status, parental status, religion, sexual orientation, political beliefs, genetic information, reprisal, or because all or part of an individual's income is derived from any public assistance program. (Not all prohibited bases apply to all programs.) Persons with disabilities who require alternative means for communication of program information (Braille, large print, audiotape, etc.) should contact USDA's TARGET Center at (202) 720-2600 (voice and TDD).

To file a complaint of discrimination, write to USDA, Assistant Secretary for Civil Rights, Office of the Assistant Secretary for Civil Rights, 1400 Independence Avenue, S. W., Stop 9410, Washington, DC 20250-9410, or call toll-free at (866) 632-9992 (English) or (800) 877-8339 (TDD) or (866) 377-8642 (English Federal-relay) or (800) 845-6136 (Spanish Federal-relay). USDA is an equal opportunity provider and employer.





United States Department of Agriculture

Contact information:
Amanda Mathis-NRCS
501-301-3162 office
or
Dianne Schlenker-NRCS
501-301-3152 office

Thank you for your time and attention!



USDA is an equal opportunity provider and employer