

**CROSS COUNTY  
L'ANGUILLE RIVER  
WATERSHED  
WATER QUALITY PROJECT**

**Project #15-700**

**Oct 1, 2015-Sept 30, 2018**

# **SUMMARY OF FUNDS**

**The LRWP 15-700 is made possible by grants that are provided by the US Environmental Protection Agency (EPA), secured funding from Arkansas Natural Resources Commission (ANRC) and non-federal funds or landowner match.**

**Funds provided for the District to be  
used for implementation of the  
project.**

**\$ 98,000 Federal funds**

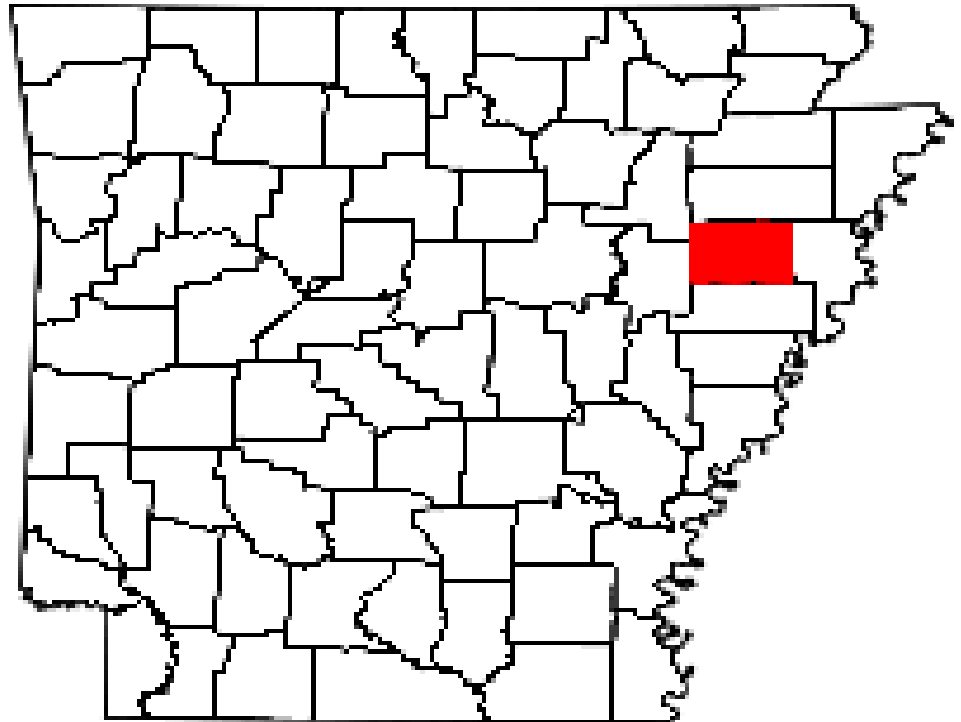
**\$112,500 Non-Federal funds.**

**\$210,500.00 Project total**

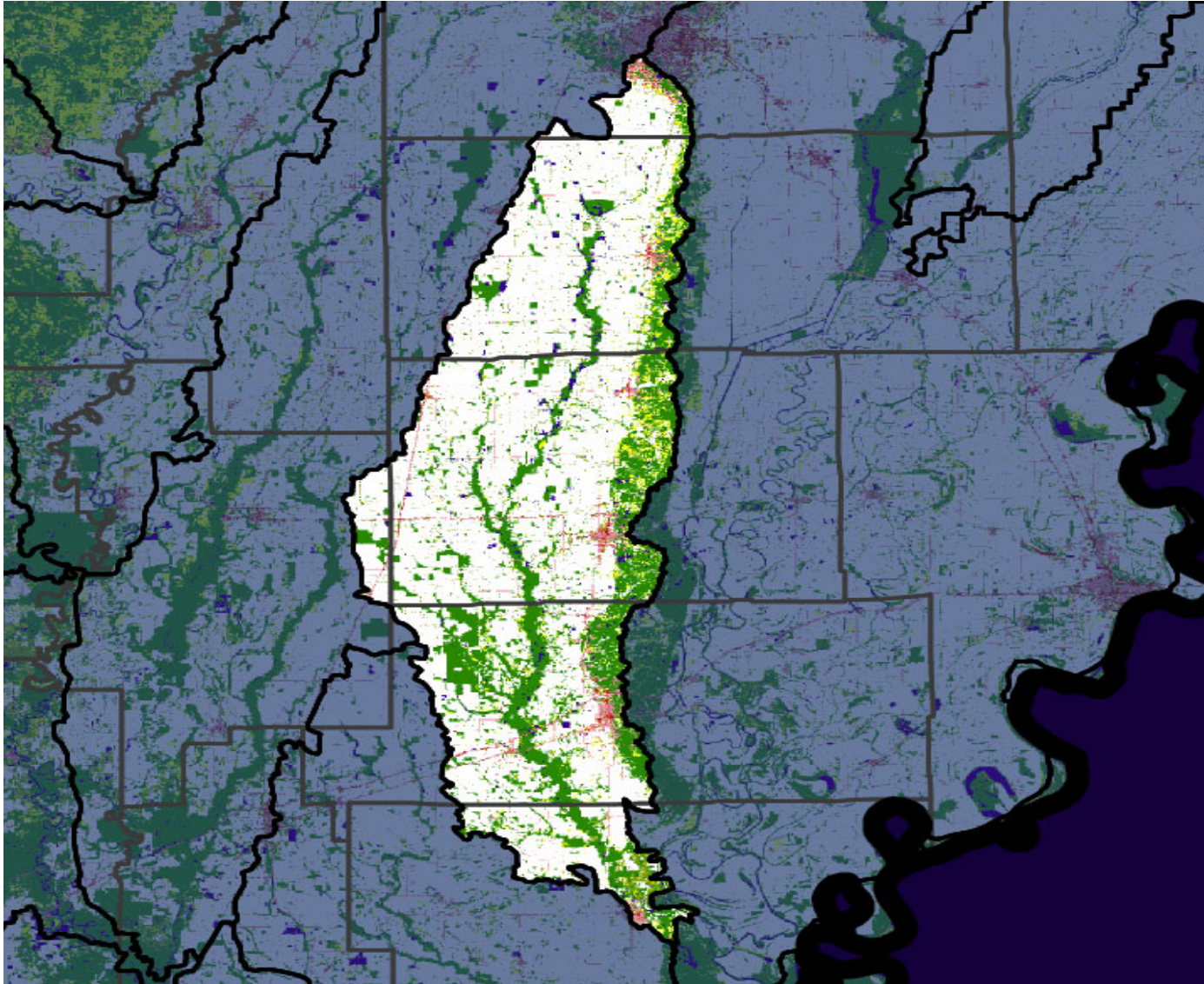
# Project Location

The Cross County-L'Anguille River Watershed  
WATER QUALITY PROJECT

Is on the East side of Arkansas  
within Cross County.



# LRW Project Area Map



# **Project Goals/Objectives:**

- **Target ongoing problem of sedimentation from agricultural lands.**
- **Improve water quality within Cross County lands**
- **Promote and encourage implementation of the Best Management Practices**



# **Project Promotion and Publicity**

- **Broadcast on local radio (radio spots and live radio)**
- **Publish in local newspaper**
- **Publish in District newsletters**
- **The project is publicized according to requirements as set by the agreement.**

# **Project Planning**

- **Review location maps with participants**
- **Develop conservation plans**
- **Complete cost share agreements with participants**
- **Partner with NRCS for technical assistance**



## **Measure of Success**

**The project is deemed a success if the best management practices (BMPs) are implemented on at least 20 farms.**

**BMPs approved for 26 farms, with over half of the practices implemented or currently being installed.**

# Structure for Water Control



# Water Control Structures

Landowners Insert boards to control water. Stopping erosion and keeping the top soil in the field.

- Landowners can control the water level in the field as well as control the flow of water coming from the field.





Front view  
of Water  
Control  
Structure

# Irrigation Pipeline



**Flow  
meter  
process to  
Determine  
size of  
pipeline  
To be  
used.**

# Irrigation Pipeline

Used to convey water for water conservation and improve water use efficiency.



Underground  
Irrigation  
Pipeline being  
installed.



# Irrigation Pipeline

**Covered  
underground  
pipe with  
riser**



# Irrigation Pipeline, completed phase --view of well and pump





# Cover Crops , Moisture Retention





# Tillage radish that was pulled.



C  
O  
V  
E  
R  
  
C  
R  
O  
P

# Ultimate Goal protect soil..... and water



# **Acknowledgments**

**Cross County Conservation would like to acknowledge and commend the following:**

- **EPA – for making project funds available and possible.**
- **ANRC, Tony Ramick, Grants Manager**
- **ANRC, Robbie Alberson, Program Coordinator**
- **ANRC, Steve Stake, Program Coordinator**
- **NRCS for technical assistance**
- **Landowners- stewardship of our lands**