

# Boone County Beaver Reservoir Watershed Project

Presented By: Boone County Conservation District

# Boone County Beaver Reservoir Watershed Project

- **Beaver Lake Watershed Protection Strategy: adopted by the US EPA**
- **Beaver and Table Rock Lake-supplies drinking water**
- **Causes of impairment: sediment/nutrient/chemical residues**
- **Adverse effects on several species**

## **Project Goal**

**Encourage voluntary participation of Best Management Practices (BMPs) on 50% of pastureland (approximately 22,500 acres)**

# Boone County Beaver Reservoir Watershed Project

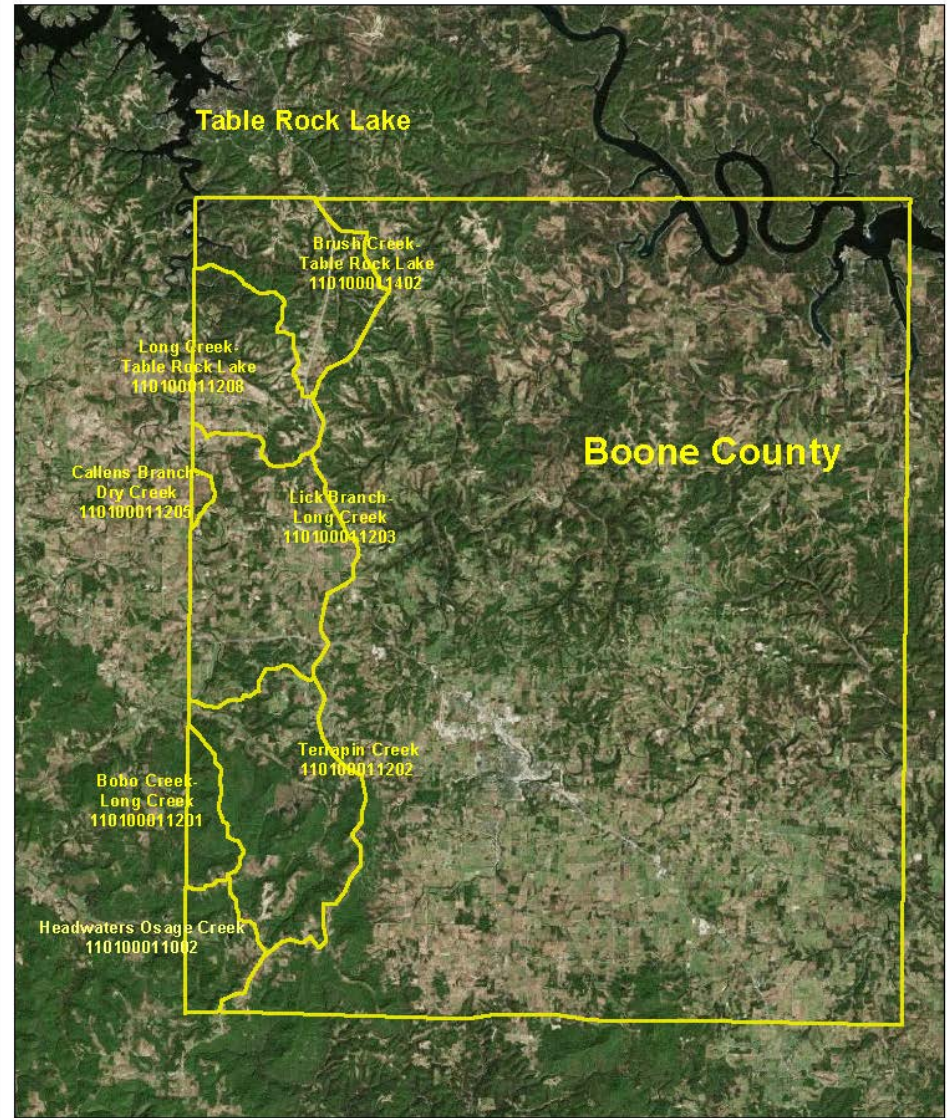
## Project Focus

### Sub watersheds:

- **Brush Creek-Table Rock Lake**
- **Long Creek-Table Rock Lake**
- **Lick Branch-Long Creek**
- **Callens Branch-Dry Creek**
- **Terrapin Creek**
- **Bobo Creek-Long Creek**
- **Headwaters Osage Creek**

District: BOONE COUNTY CONSERVATION DISTRICT

Assisted By: Lisa Widner



Legend

319-Long Creek

11,000 0 11,000 22,000 33,000 44,000 Feet



# Boone County Beaver Reservoir Watershed Project

## Pasture Management Discussion March 28, 2016

Speakers included the:

- NRCS Technicians
- Dirk Philipp, Ph.D., U of A
- BCCD Technicians & Board
- Testimonials from land owners

**Focused on:**

**Increasing Awareness for Water Quality  
Protection: Stream Restoration through  
Temporary & Permanent Animal Access  
Restriction**

*Join the Boone County Conservation District for a  
**Pasture Management Discussion***

**Monday, March 28, 2016**

**10:00am-1:30pm**

**at the  
Alpena Community Center**



*Call (870) 741-8600 x.3 for  
more information.*

*Lunch will be provided.*



10:00 am: **Opening Remarks and Welcome**

10:15 am: **Increasing Awareness for Water Quality Protection: Stream  
Restoration through Temporary and Permanent Animal Access  
Restrictions** Dirk Philipp, Ph.D. Associate Professor Department of Animal  
Science, University of Arkansas

11:00 am: **Rotational Grazing, Fencing, and Watering Facilities**  
BCCD & NRCS Staff

12:00 pm: **Lunch**

1:00 pm: **Cost Share Programs Offered**

***For All Boone County Poultry Operators: If you haven't  
completed 2016 Poultry Registration, you may do so at this event!***

Sponsored by the Boone County Conservation District with speakers from:  
USDA-Natural Resources Conservation Service  
U of A Division of Agriculture Cooperative Extension Service

USDA IS AN EQUAL OPPORTUNITY PROVIDER AND EMPLOYER

This meeting is open to all eligible persons without regard to race, color, national origin, religion, gender, age, disability, marital or veteran status, or any other legally protected status. Persons with disabilities who require alternative means for communication of program information (large print, audiotapes, etc.) should notify the county Extension office (or other appropriate office) as soon as possible prior to the activity.



## Boone County Beaver Reservoir Watershed Project

# Outreach

- Newsletter Inserts Quarterly
- Facts Sheets
- Fair Booth at the Northwest  
Arkansas District Fair
- Project Highlighted on District's  
Website [www.boonecd.com](http://www.boonecd.com)
- Radio Spots & Newspaper  
Articles



# Boone County Beaver Reservoir Watershed Project

Other BMPs Completed

Forage & Biomass Planting (512) 312.3 ac

Brush Mgt (314) 10 ac



# Boone County Beaver Reservoir Watershed Project

## Completed Practices

Fencing (382)

22,424.20 ft.



# Boone County Beaver Reservoir Watershed Project

## Other BMPs Completed

Pipeline (516) 2001 ft.

Watering Facilities (614)

Heavy Use Area  
Protection (561)



# Boone County Beaver Reservoir Watershed Project

## Accomplishments to Date

- **Completed 17 conservation plans**
- **Revised 5 Nutrient Management Plans & created 7 new plans**
- **\$27,720.36 has been paid to landowners, \$41,580.61 landowner match**

## Those Aiding in the Project

- Boone County Conservation District
- Natural Resource Conservation Service
- Boone County Extension Service
- Arkansas Natural Resources  
Commission
- US Environmental Protection Agency

# Boone County Beaver Reservoir Watershed Project

## *Questions?*

