

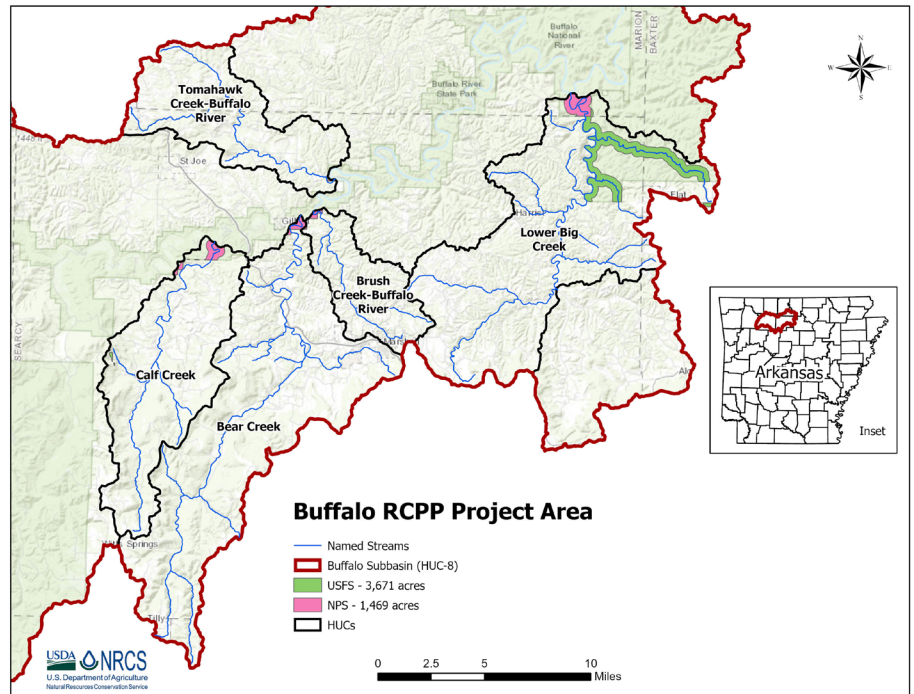
2021 Regional Conservation Partnership Program

Buffalo River RCPP Fact Sheet



Overview

The Buffalo River Watershed Enhancement Project, an RCPP project, seeks to collaborate with private landowners to reduce erosion on their land and enhance water quality in the Buffalo River. This voluntary program provides agricultural producers with a suite of conservation practices to improve pasture and hay land quality, and decrease erosion from unpaved roads, pastures and streambanks in a manner that improves water quality. Agricultural producers in the Buffalo River watershed in Baxter, Boone, Madison, Marion, Newton, Pope, Searcy, Stone and Van Buren counties are eligible for this program. Although all producers in the Buffalo River watershed are eligible, applications from the sub watersheds of Bear, Big, Brush, Calf, and Tomahawk creeks will be prioritized.



Resource Concerns Addressed by the Project

- Field sediment, nutrient and pathogen loss (primary)
- Aquatic habitat (secondary)
- Concentrated erosion (secondary)
- Livestock production limitation (secondary)
- Long-term protection of land (secondary)
- Terrestrial habitat (secondary)
- Wind and water erosion (secondary)

Conservation Practice Funding

Funding will be available to eligible landowners through the RCPP program. NRCS will provide financial assistance for a systems approach using approved conservation practices for the purpose of addressing resource concerns. Land and producer eligibility must be met to participate in this initiative.

Approved Conservation Practices

- 314 - Brush Management
- 315 - Herbaceous Weed Control
- 333 - Prescribed Burning
- 342 - Critical Area Planting

ARKANSAS

Natural
Resources
Conservation
Service

nrcs.usda.gov/



- 362 - Diversion
- 378 - Pond
- 381 - Silvopasture
- 382 - Fence
- 391 - Riparian Forest Buffer
- 394 - Firebreak
- 396 - Aquatic Organism Passage
- 466 - Land Smoothing
- 468 - Lined Waterway
- 472 - Use Exclusion
- 484 - Mulching
- 490 - Tree and Shrub site preparation
- 512 - Forage and Biomass Planting
- 516 - Livestock Pipeline
- 528 - Prescribe Grazing
- 533 - Pumping Plant
- 560 - Access Roads
- 561 - Heavy Use Area
- 574 - Spring Development
- 578 - Stream Crossings
- 580 - Streambank and Shoreline Protection
- 587 - Structure for Water Control
- 590 - Nutrient Management
- 595 - Intergrated Pest Management
- 612 - Tree and Shrub Establishment
- 614 - Water Facility
- 642 - Water Well
- 645 - Upland Wildlife Habitat
- 666 - Forest Stand Improvement

How to Apply for RCPP

NRCS and associated conservation partners will deliver this program collaboratively. Applications may be obtained and filed with NRCS at USDA field service center in the following counties: Baxter, Boone, Madison, Marion, Newton, Pope, Searcy, Stone and Van Buren.

If you need more information about RCPP, please contact one of the above offices or visit the NRCS Arkansas Web site at: www.ar.nrcs.usda.gov.

For more information on the Buffalo River Watershed Enhancement Project, contact TNC at (501) 663-6699.

Partners

- Arkansas Department of Agriculture, Forestry Division
- Arkansas Department of Agriculture, Natural Resources Division
- Arkansas Game and Fish Commission
- University of Arkansas, Center for Training Transportation Professionals
- University of Arkansas, Division of Agriculture, Cooperative Extension Service
- Buffalo River Foundation
- Buffalo Conservation District
- Searcy County Agriculture Conservation Cooperative

