



# Saline County 4-H Newsletter

[www.uaex.edu/counties/saline/](http://www.uaex.edu/counties/saline/)



January 2021 | Issue 7

## INSIDE THIS ISSUE

Re-enroll for 2021	1
Record Books	2
Clothing Drive	2
Poultry Chain	3
Virtual Award Ceremony	3
Monthly Leader Tips	4
State Opportunities	5
Scholarships	6

## RE-ENROLLMENT STARTS JANUARY 1 4-H FAMILIES & LEADERS MUST RE-ENROLL FOR 2021

### STEPS TO RE-ENROLL FOR YOUR FAMILY:

1. Visit [4h.uaex.edu](http://4h.uaex.edu) and click "Join 4-H" (dropdown menu on mobile)
2. Sign into your account (Do NOT make a new account)
3. Review your family profile and make changes as needed!

→Name →Address →Phone →E-mail →Clubs

4. Make needed changes to the following:

→Shirt Size →Medical Form →Code of Conduct →\*\*Waivers

\*\*Please note that all members must sign ALL waivers—even if they don't participate in those projects.

Please complete this process by the end of January 2021! Once this is completed, the County Extension Office will send main club leaders a list of their members, and club membership will be confirmed. All 4-H youth must be registered online in order to participate in 4-H activities. If you have any questions or need assistance with registering please contact Megan Maulden at 501-303-5672 or [mmaulden@uaex.edu](mailto:mmaulden@uaex.edu)

 JOIN 4-H

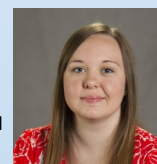
## Visit [4h.uaex.edu](http://4h.uaex.edu) to re-enroll!

## Saline County Extension Office

1605 Edison Ave. #15  
Benton, AR 72015  
501-303-5672

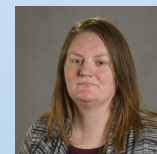
### Megan Maulden

County Agent—4-H  
[mmaulden@uaex.edu](mailto:mmaulden@uaex.edu)



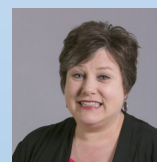
### Nicole Nichols

County Agent— Agri  
[nnichols@uaex.edu](mailto:nnichols@uaex.edu)



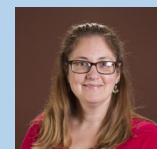
### Kris Boulton

County Agent—FCS  
[kboulton@uaex.edu](mailto:kboulton@uaex.edu)



### Jennifer Pruitt

Admin Specialist  
[jpruitt@uaex.edu](mailto:jpruitt@uaex.edu)



4-H   
GROWS HERE

501-303-5672 | [mmaulden@uaex.edu](mailto:mmaulden@uaex.edu)

# Saline County 4-H NEWSLETTER

This year's 4-H record books are due to the Saline County Extension Office by February 1st, 2021! For guidance or questions, you can reach out to your club leader or contact the Extension Office.

mmaulden@uaex.edu | 501-303-5672

## 4-H RECORD BOOKS

This year's record books are due to the Saline County Extension Office by February 1, 2021. **County scholarships in the amount of \$100 will be awarded for ALL complete and timely submissions**, and additional scholarships are available for select participants at the state and district levels. Be sure to reach out to your local club leader or Extension Agent if you have questions. We are here to support you, and we are excited to see all the great project work you've done this year.

### RECORD BOOK CATEGORIES (Ages as of 1/1/21)

- Advanced Record Book—Ages 16-19. Must include a resume.
- Intermediate Record Book—Ages 13-15
- Beginner Record Book—Ages 9-12
- Cloverbud Books—Ages 5-8



More record book guides and forms can be found at: <https://4h.uaex.edu/youth/projects/>

## WINTER CLOTHING DRIVE BRYANT SCIENCE MASTERS 4-H CLUB



On December 15th, the Bryant Science Masters 4-H Club delivered their first batch of donations to the Bryant Rotary Kids Closet as part of the 4-H club's winter clothing drive. Despite the COVID-19 pandemic, the Bryant Science Masters 4-H Club has continued to meet virtually each month to learn, socialize, and plan projects that serve their community. They plan to continue their winter clothing drive through the month of January, and will deliver another round of donations on February 1st.

If you would like to donate your new or gently used children's clothing to the winter clothing drive, donations are being accepted at the Saline County Extension Office. Our office is located at 1605 Edison Ave. Suite 15, Benton AR 72015. Please call 501-303-5672 to ensure that the office is open during your preferred donation drop-off time. The Bryant Science Masters appreciate your support!

# Saline County 4-H NEWSLETTER

To place your order for 2021 Arkansas Poultry Chain chicks, please contact the Saline County Extension Office  
mmaulden@uaex.edu | 501-303-5672

## POULTRY CHAIN ORDERS

It's time to start thinking about your 2021 Arkansas Poultry Chain projects! This is a fantastic opportunity for 4-H youth who want to learn about bird husbandry, health, production, biosecurity and/or small business management. The fee for this project is \$12.50 per participant, and each project order will receive up to 20 female chicks. **4-H youth must return one pen of three pullets to the 2021 Saline County Fair to be auctioned off.** Proceeds from the auction will be returned to the 4-H Foundation to fund future 4-H poultry projects. The breed this year will once again be the Hyline Brown hen, which is a large-bodied, docile and fantastic egg producing bird. Hyline males are also available for order, with a maximum of five males per one set of hens at a cost of \$0.50 each.



Poultry chain orders should be made to the Saline County Extension Office by **FRIDAY, MARCH 5TH**. Chicks will be delivered and available for pickup at our office on April 16th. Please contact our office at 501-303-5672 or e-mail mmaulden@uaex.edu if you have any questions or would like to place your order.

## VIRTUAL AWARD CEREMONY

### TUNE IN ON FACEBOOK, FRIDAY JANUARY 22

In lieu of an end of year banquet, Saline County 4-H will be hosting a Virtual Award Ceremony this **Friday, January 22nd @ 7:00 PM** over Facebook. We will be highlighting the hard work of our 4-H members and adult leaders from the 2020 year and announcing awards such as Club of the Year, 4-H Member of the Year, and more. If you are unable to catch our live footage, a recording will be saved to both our Facebook and YouTube.

We thank you all for a tremendous year, and we look forward to seeing you at the Virtual Award Ceremony! If you have any questions or difficulties viewing, please contact our Saline County Extension Office for assistance.



facebook.com/  
salinecounty4hpage



tinyurl.com/salineyoutube



501-303-5672 | mmaulden@uaex.edu

The University of Arkansas System Division of Agriculture offers all its Extension and Research programs to all eligible persons without regard to race, color, sex, gender identity, sexual orientation, national origin, religion, age, disability, marital or veteran status, genetic information, or any other legally protected status, and is an Affirmative Action/Equal Opportunity Employer.

# Monthly Leader TIPS

Continued training is critical to having meaningful and productive 4-H meetings and experiences with Arkansas youth. Volunteer trainings are designed to not only give leaders the skills and tools to keep the youth in our 4-H programs successful and safe, but also to provide support to our volunteers.

## SPRING VOLUNTEER FORUM LEARNING OPPORTUNITY FOR ADULT VOLUNTEERS

The Volunteer Leader Forum is going virtual! This year's forum will be held on January 30th from 9:00 AM—3:30 PM. We encourage our adult volunteers to take advantage of this free training, and to explore other volunteer training opportunities at <https://4h.uaex.edu/volunteers/volunteer-training.aspx>. Speakers from across the nation have been invited to share tips, tricks, or simply to provide encouragement and motivation for our incredible 4-H Leaders at this event. There are sessions being offered on conflict resolution, building leaders, and on easy grab and go lessons to use with your clubs. Please check out the Volunteer Training segment of our 4-H website in order to register, or contact the Saline County Extension Office.

### Spring Volunteer Forum

9:00 AM-10:00 AM	Welcome from National 4-H's Bo Ryles
10:00 AM-11:00 AM	Creating Leaders with Casey Jarding Franklin County
11:00 AM-Noon	Project Portfolios: Delivering a Common Message - State Staff
Noon-1:00 PM	Lunch
1:00 PM-2:00 PM	Opportunities in 4-H Virtual and Beyond: Kim Harrison and State Staff
2:00 PM-3:00 PM	Coping with Conflict Jamie Morris, Univ. of Maryland 4-H
3:00 PM-3:30 PM	Wrap up and Conversation

### Objectives

- Be recharged & ready for 2021
- Have tools to mold future leaders
- Build a network of fellow volunteers
- Be equipped to share new ideas

### Reminders

- You are the first contact in 4-H for many youth!
- Arkansas 4-H serves over 10,000 youth in all 75 Counties
- We value all that you do for 4-H
- Take time to recharge yourself!

**REGISTER TODAY:**

<https://tinyurl.com/volunteerforum2021>

**4-H**  
**GROWS HERE**

501-303-5672 | [mmaulden@uaex.edu](mailto:mmaulden@uaex.edu)

The University of Arkansas System Division of Agriculture offers all its Extension and Research programs to all eligible persons without regard to race, color, sex, gender identity, sexual orientation, national origin, religion, age, disability, marital or veteran status, genetic information, or any other legally protected status, and is an Affirmative Action/Equal Opportunity Employer.

# AR Statewide 4-H OPPORTUNITIES

Get involved with statewide 4-H opportunities by following the Arkansas 4-H Facebook page, or by checking out the information below!

## ROSS PHOTOGRAPHY CONTEST

It's that time again—the Ross Photography Contest dates have been announced for 2021! Every year, the Ross Photography Contest offers an opportunity for Arkansas 4-H'ers to demonstrate, compete, and exhibit their photography skills. All 4-H members ages 9-19 are eligible for the state contest, and may enter one original photo into each category (total of four photos) to their county contest. Cloverbuds will not be judged, but are encouraged to participate at the county level. Deadline for submission is **March 26, 2021**. Categories include: Color Living, Color Nonliving, Black and White Living, Black and White Nonliving.

## WHEP VIRTUAL PRACTICE SESSION WILDLIFE HABITAT EDUCATION PROGRAM

A virtual practice session for 4-H WHEP (Wildlife Habitat Education Program) will be held January 30. There is no cost, but registration is required. You can sign up through the 4-H Registration and Enrollment system on the 4-H website at <https://4h.uaex.edu/> under "Join." If you haven't completed your annual enrollment yet, you can do so at the same time (as 4-H enrollment is required for participation.) The practice session is open to all youth, adult coaches, volunteer leaders, and anyone interested in wildlife. The Junior session in the morning will focus on interpreting satellite images. The Senior session starts around noon and will focus on writing plans and oral reasons. More specific details will be emailed to registered participants. **Last day to register is January 20.**

The WHEP Contest will be held April 30. A decision about whether it will be in-person or virtual will be forthcoming. COVID-19 guidance will be followed if an in-person contest is held.

The species lists that are used in the contest can be found at <https://4h.uaex.edu/programs/plant-animal/wildlife-programs/whep.aspx>. If you have questions, contact Becky McPeake at [rmcpeake@uaex.edu](mailto:rmcpeake@uaex.edu).

## NATIONAL YOUTH SUMMIT ON HEALTHY LIVING

Is your project area Healthy Living, or are you interested in learning more about Healthy Living? Then this free event is for YOU! At the National Youth Summit on Healthy Living, high school youth (14-19 years) develop the knowledge and skills to address issues surrounding nutrition, physical fitness, wellness, and emotional well-being. Working alongside professionals in family consumer science and healthy living, you will create action plans to implement in your communities to teach other youth what they have learned. **Deadline to register is January 25, 2021, at 11:59 pm.** If you have any questions, please contact Amanda Welch at [awelch@uaex.edu](mailto:awelch@uaex.edu).

When: February 12 - 15, 2021

Where: Online

How to Register: Visit [Arkansas 4-H Enrollment](#) and click on the event "National Youth Summit on Healthy Living"

The University of Arkansas System Division of Agriculture offers all its Extension and Research programs to all eligible persons without regard to race, color, sex, gender identity, sexual orientation, national origin, religion, age, disability, marital or veteran status, genetic information, or any other legally protected status, and is an Affirmative Action/Equal Opportunity Employer.



DIVISION OF AGRICULTURE  
RESEARCH & EXTENSION

University of Arkansas System



# Saline County 4-H Newsletter

[www.uaex.edu/counties/saline/](http://www.uaex.edu/counties/saline/)



## CHECK OUT 4-H SCHOLARSHIP OPPORTUNITIES

### Applications Due February 1

If you are a 4-Her whose interested in applying for scholarships to help fund your post high school education plans, please check out our college scholarship opportunities. You should only complete one online scholarship application form but must check all the boxes of the scholarships for which you qualify. On the first page at the top left of the online application, just check the “Yes, I would like to find out more” box and the 4-H State College Scholarship fact sheet will appear. The fact sheet provides many details about the specific scholarship requirements and the process.

### The 4-H scholarship website page:

<https://4h.uaex.edu/youth/awards/scholarships.aspx>

### 4-H State College Scholarship fact sheet:

<https://4h.uaex.edu/youth/awards/4HCL12.2020R.pdf>

### Online application form:

[https://uaex.formstack.com/forms/arkansas\\_4h\\_scholarship\\_application](https://uaex.formstack.com/forms/arkansas_4h_scholarship_application)

*Keep up with us!*

*Megan Maulden*

Megan Maulden—County 4-H Agent  
Saline County Extension Service  
1605 Edison Ave, Suite #15  
Benton, AR 72015



text @saline4H to 81010



[facebook.com/  
salinecounty4hpagen](https://facebook.com/salinecounty4hpagen)



[tinyurl.com/salineyoutube](https://tinyurl.com/salineyoutube)



501-303-5672 | [mmaulden@uaex.edu](mailto:mmaulden@uaex.edu)

The University of Arkansas System Division of Agriculture offers all its Extension and Research programs to all eligible persons without regard to race, color, sex, gender identity, sexual orientation, national origin, religion, age, disability, marital or veteran status, genetic information, or any other legally protected status, and is an Affirmative Action/Equal Opportunity Employer.