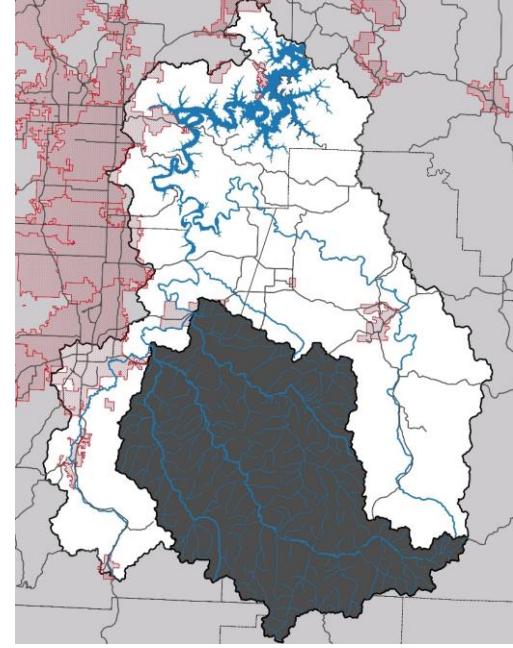
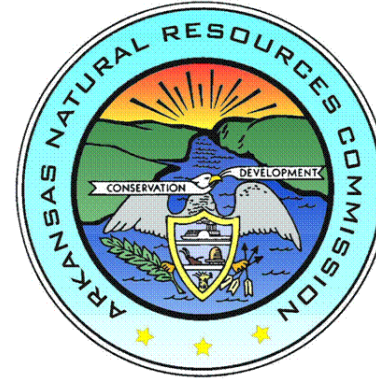


White River and Richland Creek Watershed Opportunity Assessment



Project FY16-500

Melissa McCarver



BEAVER
WATERSHED
ALLIANCE



Project Overview

- Project Goals/Objectives:

To raise White River and Richland Creek landowners' awareness and knowledge of the importance of riparian areas and engage them in adopting individual best management actions through public outreach, education, and demonstration programs.

- October 2016 to June 2019

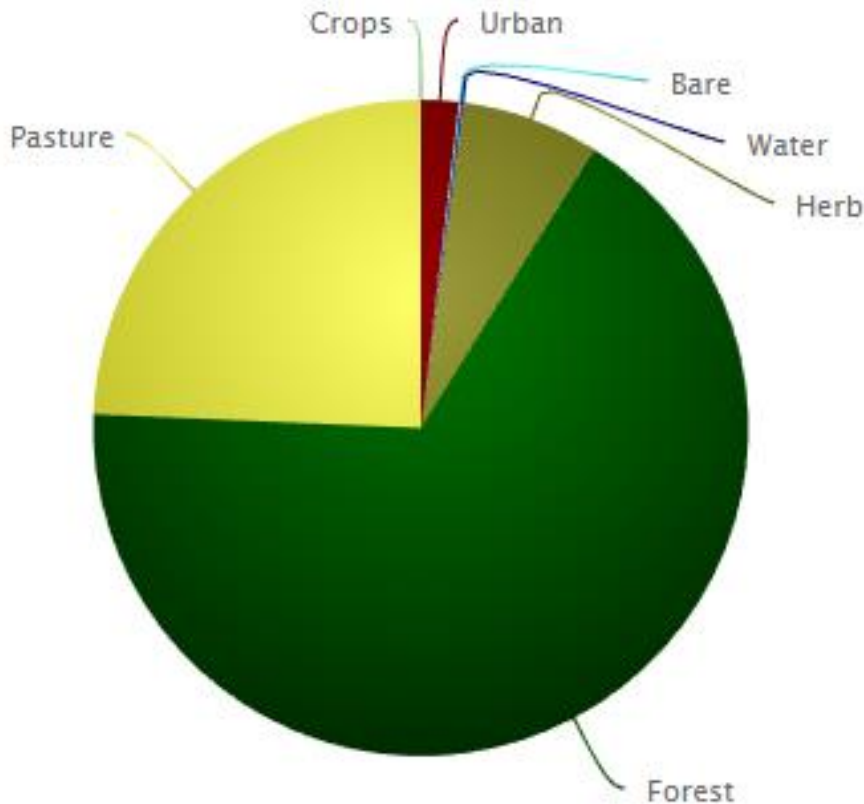
- Project Costs: \$438,251 (57% Federal, 43% Match)



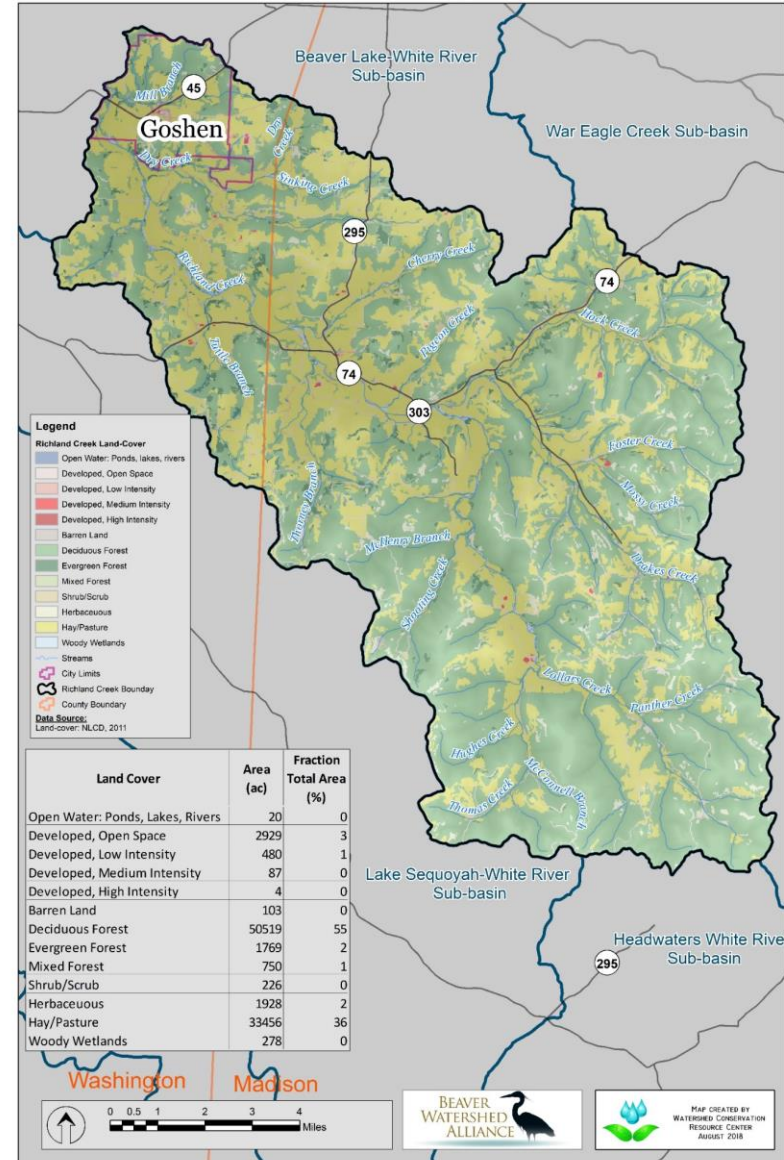
White River-Richland Creek Watershed

Richland Creek

- 93,333 acres
- 283.3 mi of roads & 189 mi of streams
- Pasture 24%, Forest 67%, Urban 2%



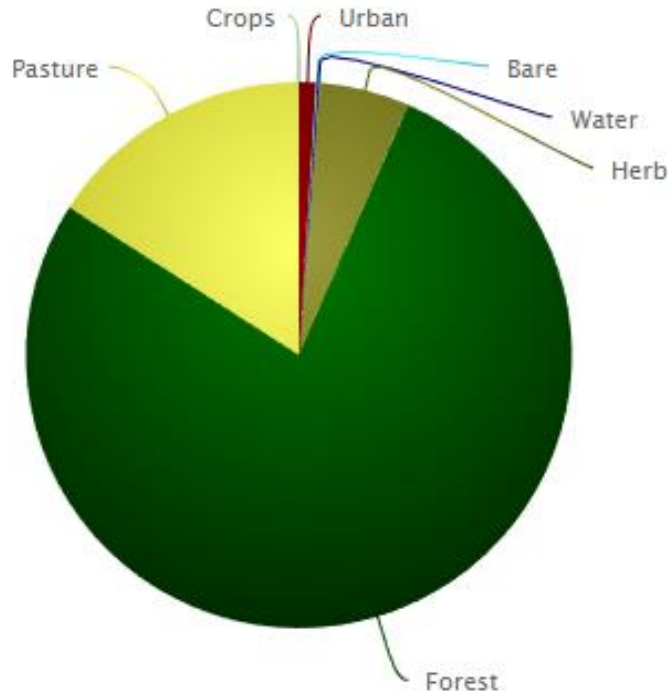
Richland Creek Sub-basin
Land Use Map



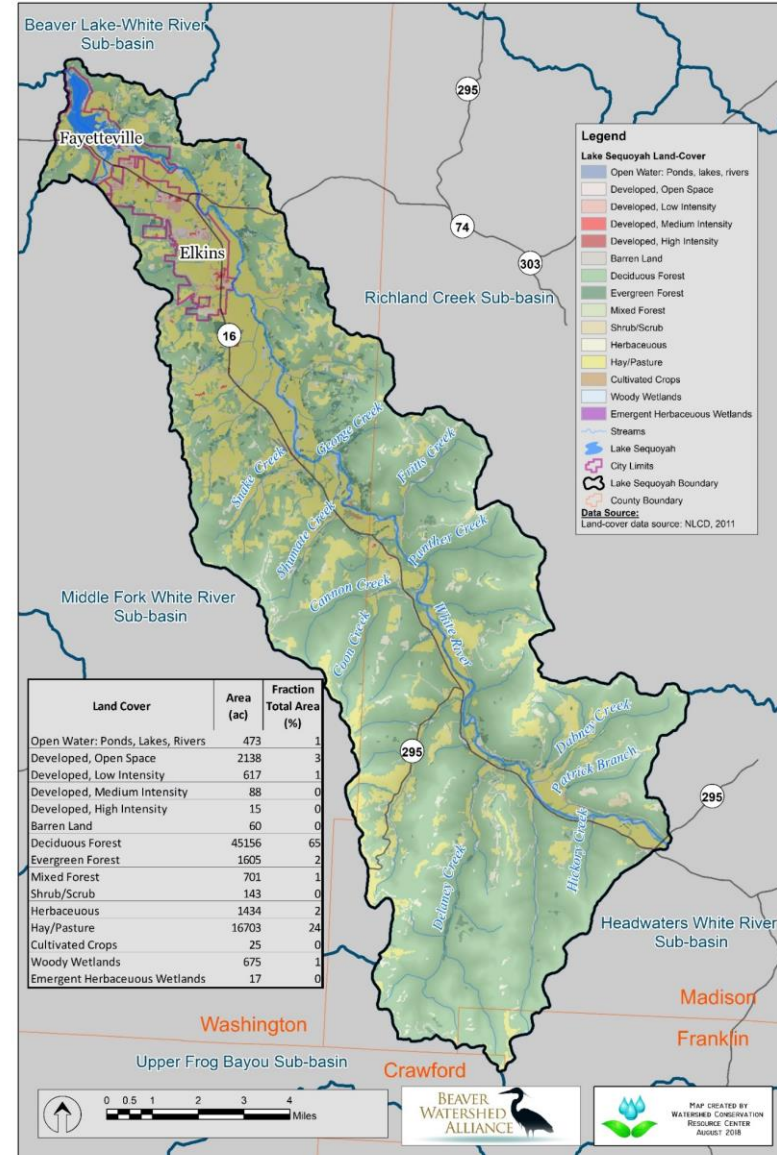
White River-Richland Creek Watershed

Lake Sequoyah-White River

- 70,838 acres
- 206 mi of roads & 143 mi of streams
- 490-acre man-made lake
(recreational fishing)
- Pasture 16%, Forest 75%, Urban 3%



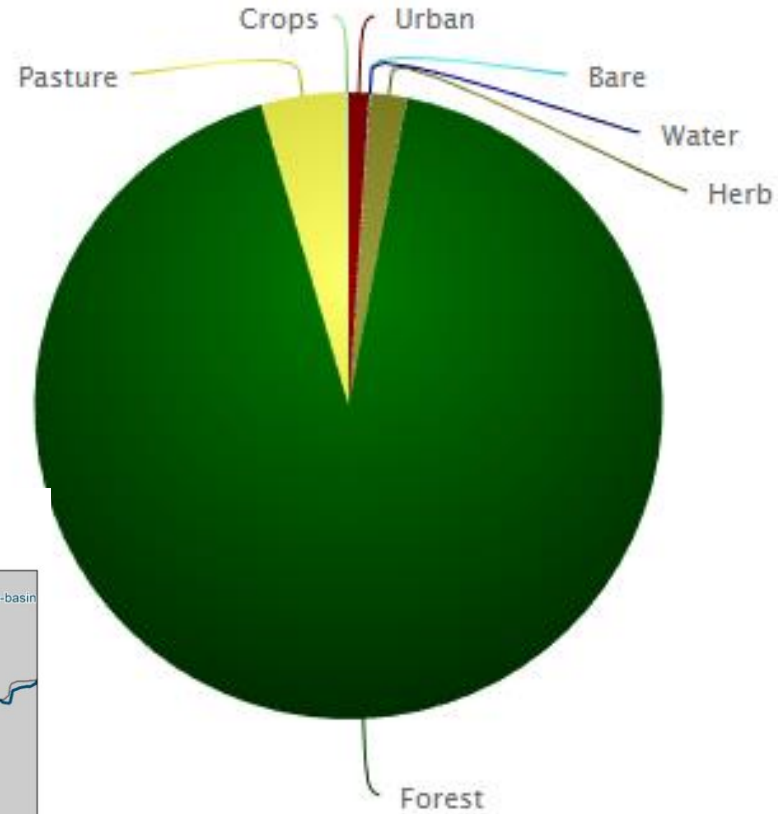
Lake Sequoyah-White River Sub-basin Land Use Map



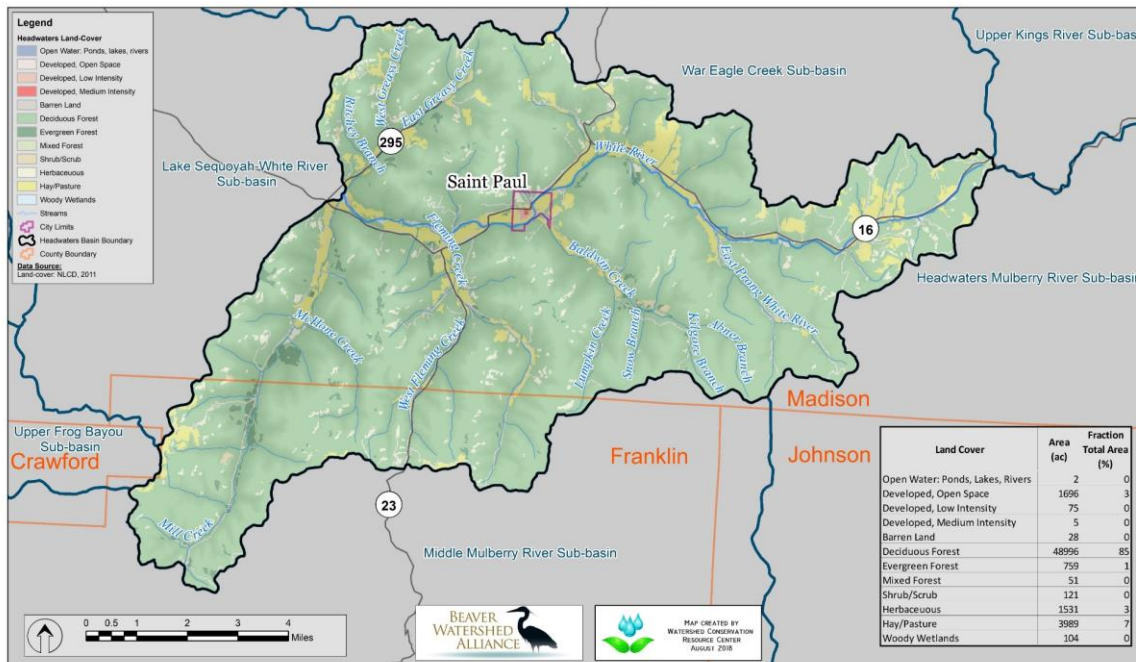
White River-Richland Creek Watershed

Headwaters-White River

- 58,206 acres
- 134 mi of roads & 114.75 mi of streams
- Pasture 4.3%, Forest 92.5%, Urban 1%



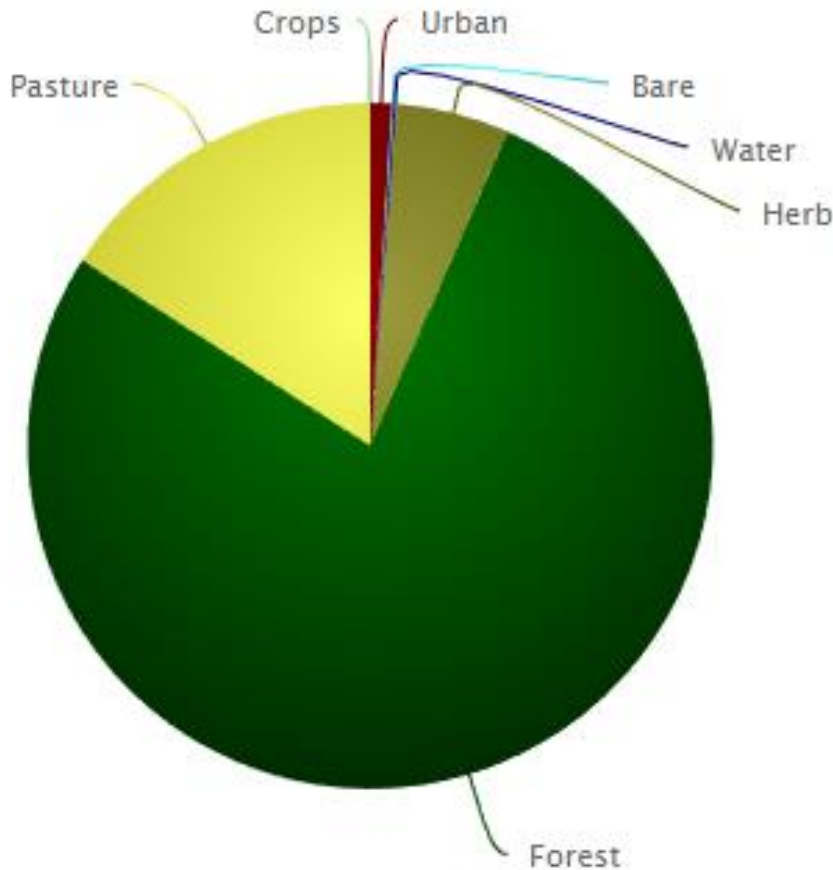
Headwaters White River Sub-basin
Land Use Map



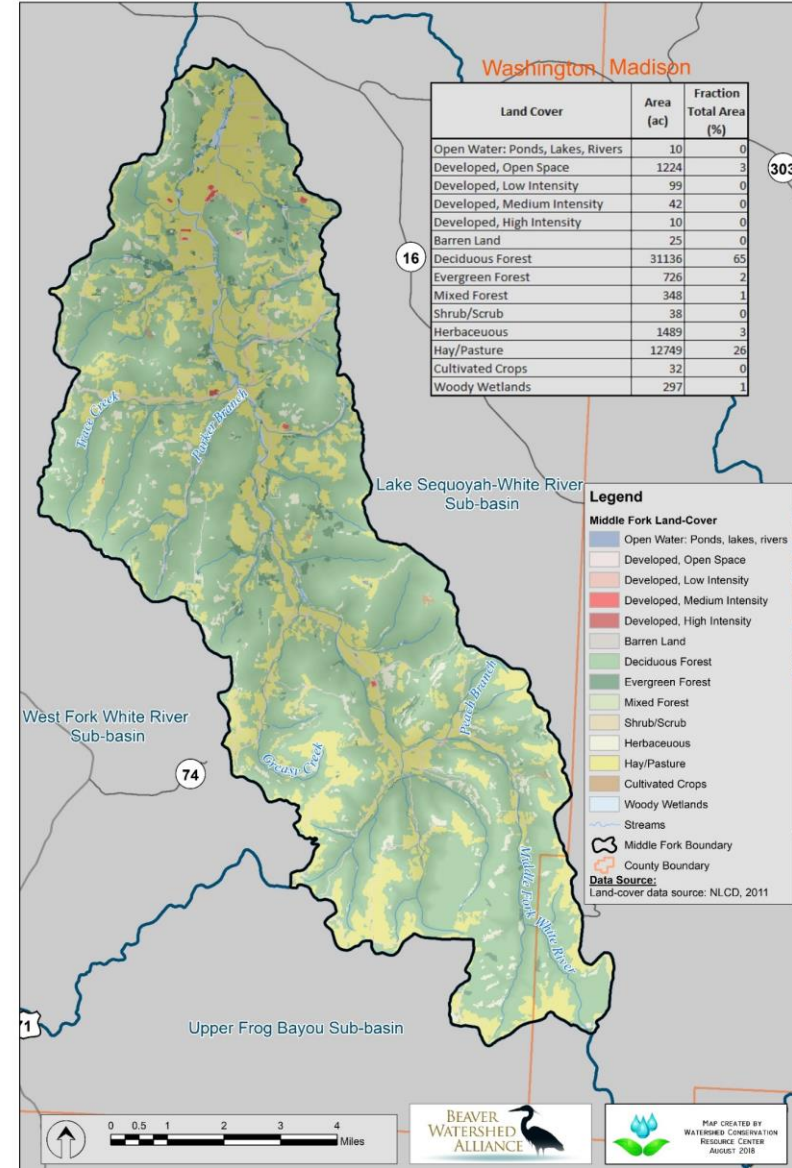
White River-Richland Creek Watershed

Middle Fork-White River

- 48,410 acres
- 156.5 mi of roads & 99 mi of streams
- Pasture 16%, Forest 77.5%, Urban 1%



Middle Fork White River Sub-basin Land Use Map



Our Approach

- Initials Goals
 - 14 Focus Group Meetings with 47 Attendees
 - 4 Mass mailings
 - Established connections with major stakeholders in watersheds
- 17 Bi-monthly newsletters sent to over 4,500 landowners
- 24 Monthly eNews sent to landowners



Learning Process

- Watersheds have different perspectives
 - Headwaters more reserved
 - Richland Creek, Lake Sequoyah, and Middle Fork Watershed Landowners more open
 - All are excited about protecting water quality
 - Why care about Beaver Lake?
 - Don't have rural water



Building Connections

- Network of Landowners was Slow Building
 - Landowners talked to neighbors
 - Some watersheds have closed off communities
- Tree and Shrub Program
 - Interested the majority of landowners
 - 75 landowners utilized Alliance's bare-root seedling giveaway



Successful Programs

- **Streamside Management Workshop - March 2018**
 - 38 participants listened to presentations from USFW and WCRC on stream side management and cost-share programs
- **Unpaved Road Workshop - October 2018**
 - 20 participants received training from TNC and the University of Arkansas on dirt road management and BMPs
- **Forest and Wildlife Management Demo – May 2019**
 - 21 participants learned about Dirt Road BMPs, TSI, and wildlife habitat management



Successful Programs

- Five Major Cleanups

- Lake Sequoyah Cleanup- 840 lb (720 lb)
- Richland Creek Cleanup – 4,960 lb (420 lb)
- East Fork-White River Cleanup – 860 lb (80 lb)
- Middle Fork-White River Cleanup – 2,700 lb (1,020 lb)
- Headwaters of the White River Cleanup – 2,900 lb (660 lb)



Supplemental Rain Garden Program

- Rain Garden Academy- April 2017
 - 17 participants learned about the rain gardens and how they improve water quality
- Alliance offered rain garden-mini grants to landowners
 - 2 landowners in the White River and Richland Creek watersheds implemented rain gardens
 - Many more are applying for rain barrels, rain gardens and other LID installations



Community Presence

County Calendar Madison County

Bluegrass Gospel Jam in St. Paul

There will be a Bluegrass Gospel Jam in St. Paul at the Activity Center beginning at 6 p.m., March 18. Potluck style snacks appreciated.

Madison County Quorum Court meeting

The Madison County Quorum Court will meet for its monthly meeting at 6 p.m. on Monday, March 20, at the Madison County Courthouse.

3rd annual White River Cleanup

The Beaver Watershed Alliance will host the 3rd annual East Fork of the White River Cleanup from 9 a.m. to noon on Saturday, March 18. Check-in will be at Bunch Park in Elkins. Maps and door prizes will be available for volunteers. Contact 479-750-8007 for more information.

Rain Academy Saturday, April 1

9 am - 12 pm
Goshen Community Bldg., 244 Clark St., Elkins, AR

Please RSVP
479-750-8007 or

becky@beaverwatershedalliance.org



BEAVER WATERSHED ALLIANCE

Please RSVP
479-750-8007 or
info@beaverwatershedalliance.org

Discovery Farm Day

Saturday, April 1
9 am - 12 pm
Elkins, AR

Learn about the Discovery Farm Program and

Streamside Management Workshop to be held in Elkins Saturday

The Streamside Management Workshop will be held in Elkins Saturday, March 18, from 9 a.m. to 12 p.m. at the Goshen Community Building. The workshop is designed to help riparian landowners understand the importance of riparian buffers and how to establish and maintain them. Topics include: riparian buffer benefits, riparian buffer types, riparian buffer design, riparian buffer maintenance, and riparian buffer monitoring. The workshop is free and open to all riparian landowners. For more information, contact 479-750-8007.

Water Quality on Your Farm!

U.A. B. Beaver Water District

County Calendar Madison County

Coggins Clinic at the Huntsville Rodeo Grounds

The Huntsville Riding Club, along with the Vet Clinic, will host a Coggins Clinic from 9 a.m. to 11 a.m. at the Huntsville Rodeo Grounds. Along with the equine vaccines, the clinic will also offer dental services. For more information, contact Lesha Baker at 479-225-3035 or Lyson Wilson at 479-789-4523.

Streamside Management

The Streamside Management Workshop will be held in Elkins Saturday, March 18, from 9 a.m. to 12 p.m. at the Goshen Community Building. Participants will learn how to establish and maintain riparian buffers to prevent land loss and slow down

Briefly

WATERSHED SEEKS HANDS
Beaver Watershed Alliance is seeking volunteers for the Richland cleanup to be held on Saturday, April 1, from 9 a.m. to 12 p.m. at the Richland Creek in North Arkansas. Volunteers will be provided with trash bags, maps to cleanup locations and gloves. This event is open to families, church groups, scout groups, civic clubs, students and people of all ages. Volunteers can also conduct the cleanup by boat. For more information, contact 479-750-8007.

WATERSHED SEEKS HANDS
Beaver Watershed Alliance is seeking volunteers for the Richland cleanup to be held on Saturday, April 1, from 9 a.m. to 12 p.m. at the Richland Creek in North Arkansas. Volunteers will be provided with trash bags, maps to cleanup locations and gloves. This event is open to families, church groups, scout groups, civic clubs, students and people of all ages. Volunteers can also conduct the cleanup by boat. For more information, contact 479-750-8007.

WATERSHED SEEKS HANDS
Beaver Watershed Alliance is seeking volunteers for the Richland cleanup to be held on Saturday, April 1, from 9 a.m. to 12 p.m. at the Richland Creek in North Arkansas. Volunteers will be provided with trash bags, maps to cleanup locations and gloves. This event is open to families, church groups, scout groups, civic clubs, students and people of all ages. Volunteers can also conduct the cleanup by boat. For more information, contact 479-750-8007.

6D SUNDAY, MARCH 19, 2017

River cleanup needs workers

The third annual East Fork of the White River Cleanup will be held from 9 a.m. to noon Saturday.

Volunteers will register at Bunch Park in Elkins. Then they will fan out to stations along the river. Volunteers will be provided lunch and have the chance to win door prizes from local sponsors. All participants will be supplied with trash bags, maps to cleanup locations and gloves. Contact 479-750-8007 for more information.

THURSDAY, MAY 18, 2017

THE MADISON COUNTY RECORD

Volunteers needed for May 27 cleanup

The Beaver Watershed Alliance (BWA) is seeking volunteers for its first annual Headwaters Cleanup on Saturday, May 27, from 9 a.m. to 1:30 p.m. The cleanup will be held in partnership with Arkansas Stream Team, Keep Arkansas Beautiful, Beaver Water District, Patagonia, Butterfield, Boston Mountain Solid Waste District, Carroll, Pack Rat, Arkansas Natural Resources Commission, EPA, and Coca-Cola. To volunteer, please call or email Melissa at 479-750-8007 or melissa@beaverwatershedalliance.org. The Beaver Watershed Alliance is formed of a diverse stakeholder group representing agricultural, recreation, business, and private landowner perspectives who all work together for the benefit of the White River and its watershed. To learn more about BWA, best management practices for water quality, or how you can become involved in voluntary watershed protection, go to www.beaverwatershedalliance.org or contact BWA at 479-750-8007.

Teamwork for trees



Neta Winston (from left), Carol Gullett, Jan Judy and Danny Smith plant a willow oak tree Friday near Elkins High School. The group are members of the Washington County Master Gardeners and were working with the Beaver Watershed Alliance to plant trees on School District property.



17 FREE SPEAKER SERIES

Presenting in Water Supply Protection in NWA
Community Center - 162 Doolin Dr., Elkins, AR

DAY, FEB. 23 FROM 11:30 A.M. TO 1 P.M.
Maintaining High Quality of Life in Your Community & Protecting Water Quality

Presentation by guest speaker Brian Teague, Owner
Community by Design

PLEASE RSVP - 479.750.8007

or info@beaverwatershedalliance.org



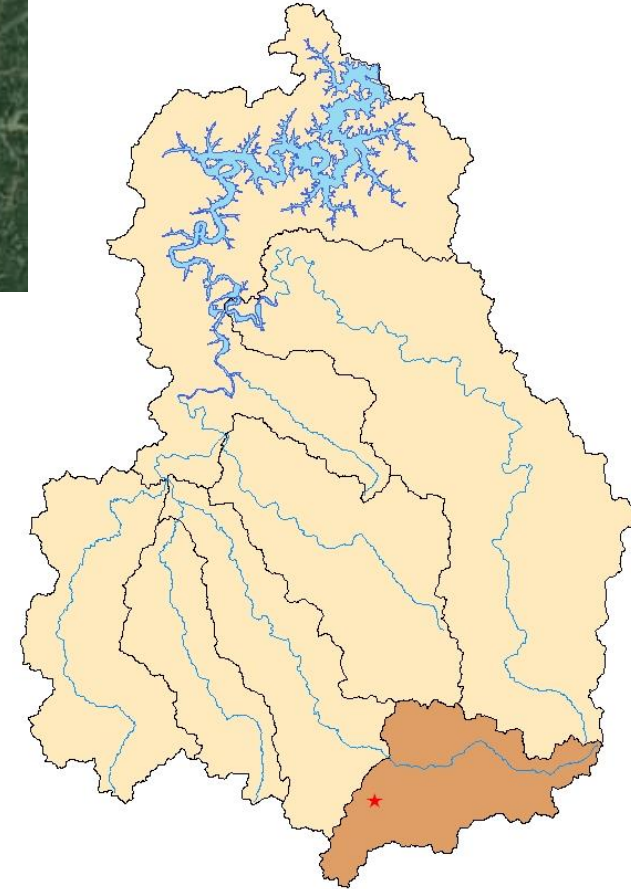
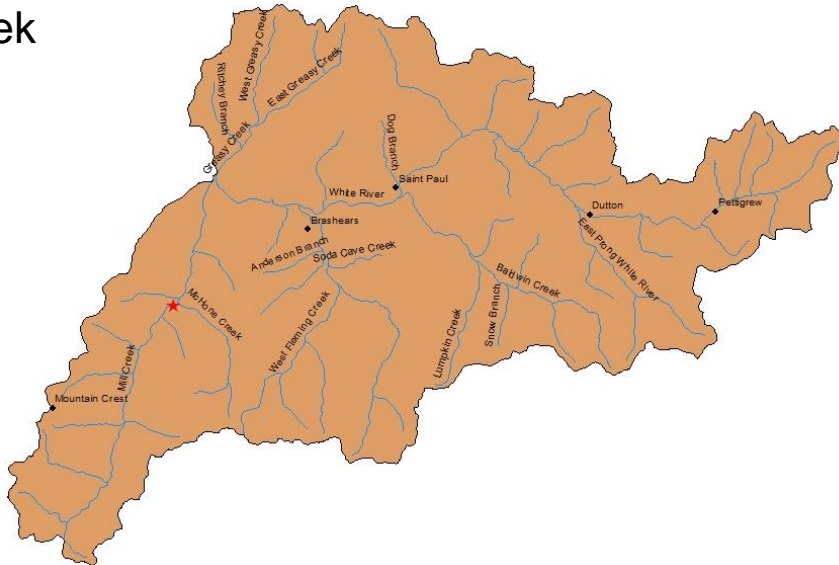
Project Accomplishments

- 130 Site Assessments
- 259 BMPs Implemented
 - 736 acres of pasture aerated
 - 16 acres of riparian buffer established
 - 190 acres of upland habitat reforested
- 56 Demonstration Sites Established
- Open-Space Neighborhood Collaboration
- Quail Habitat Restoration - 2 Sites
- LWC Removal and Stream Bank Stabilization



Mill Creek LWC Removal

- Partnership with AGFC
- Began in Summer of 2017
- Finished June 2019
- ASHP Project
- 24.2 miles in the upstream network
- Local Landowner needed a way to cross creek





Mill Creek LWC Removal



Natural State
Streams LLC



BEAVER
WATERSHED
ALLIANCE 



Mill Creek LWC Removal



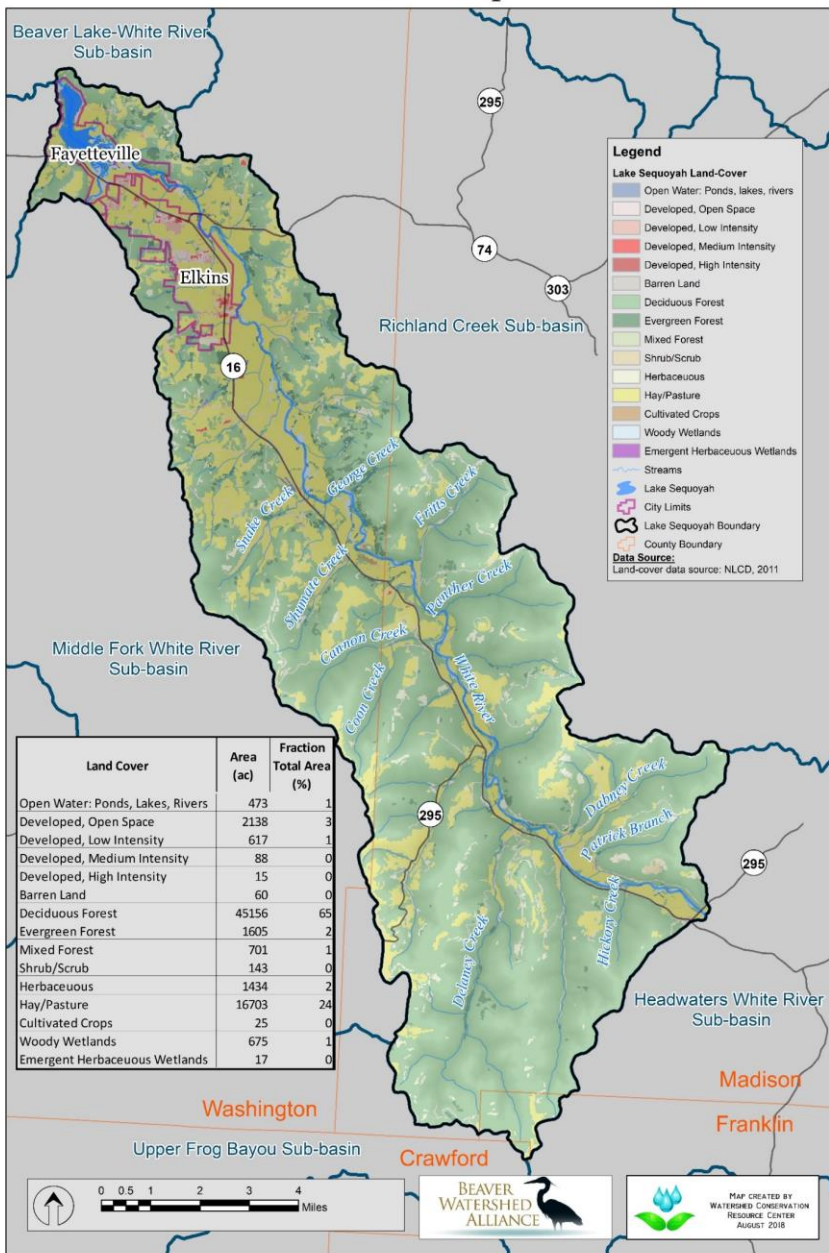
Project Event Accomplishments

- Over 2,000 Volunteer Hours
- 6 Special Interest Meetings
- 12 Stream Cleanups
- 4 Lake Cleanups
- 14 Native Tree Plantings
- 17 Newsletters and 41 Mass Mailings
- 12 Rain Garden Stewardship Events



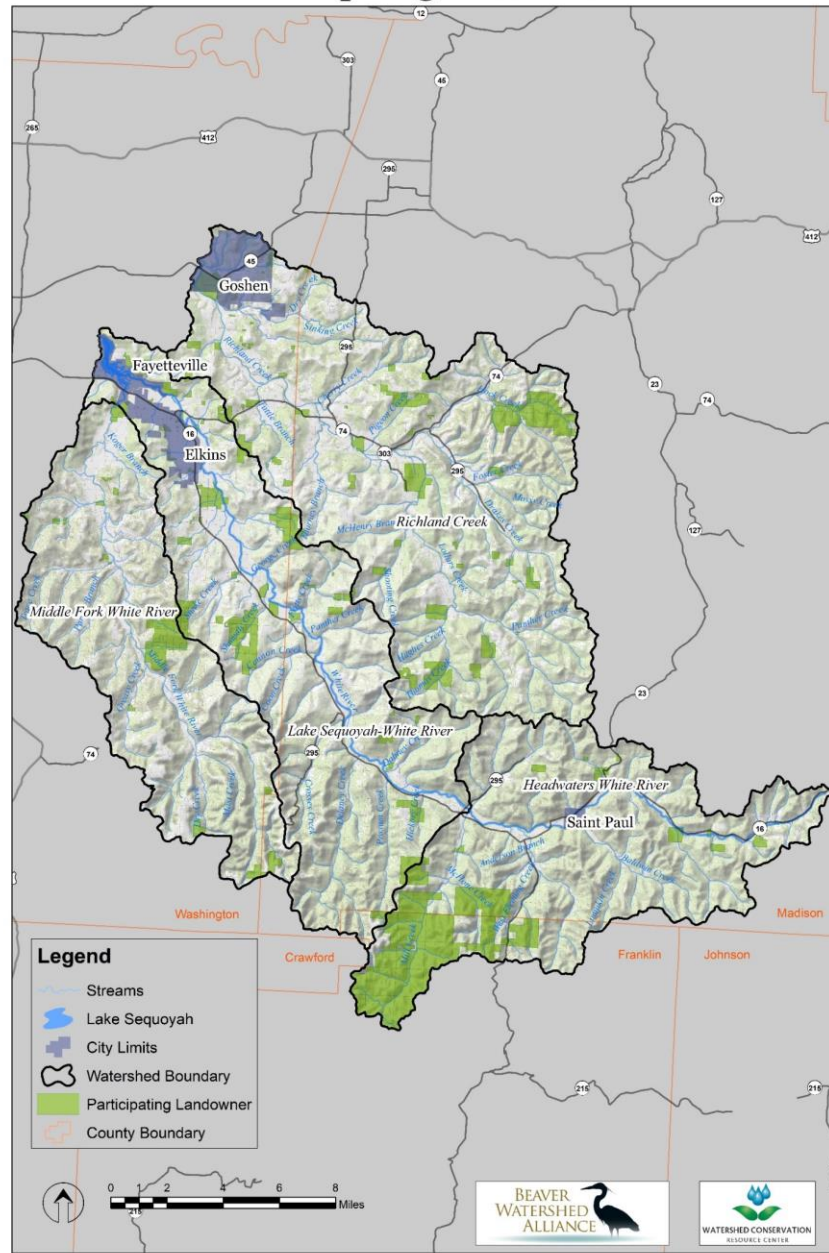
Lake Sequoyah-White River Sub-basin

Land Use Map



White River-Richland Creek Opportunity Assessment

Participating Landowners



Variety of Maps Created

Big Issues Identified



Continuing Efforts & Opportunities



Thanks to Our Partners & Sponsors:



WATERSHED CONSERVATION
RESOURCE CENTER



ARKANSAS WATER
RESOURCES CENTER



DIVISION OF AGRICULTURE
RESEARCH & EXTENSION
University of Arkansas System



The
WALTON FAMILY
FOUNDATION



Beaver Water District



Washington County
Conservation District



CITY OF
FAYETTEVILLE
ARKANSAS



U of A
DIVISION OF AGRICULTURE
RESEARCH & EXTENSION
University of Arkansas System



Also thanks to: City of St. Paul, City of Goshen, Madison County