



United States Department of Agriculture



Landscape Initiatives

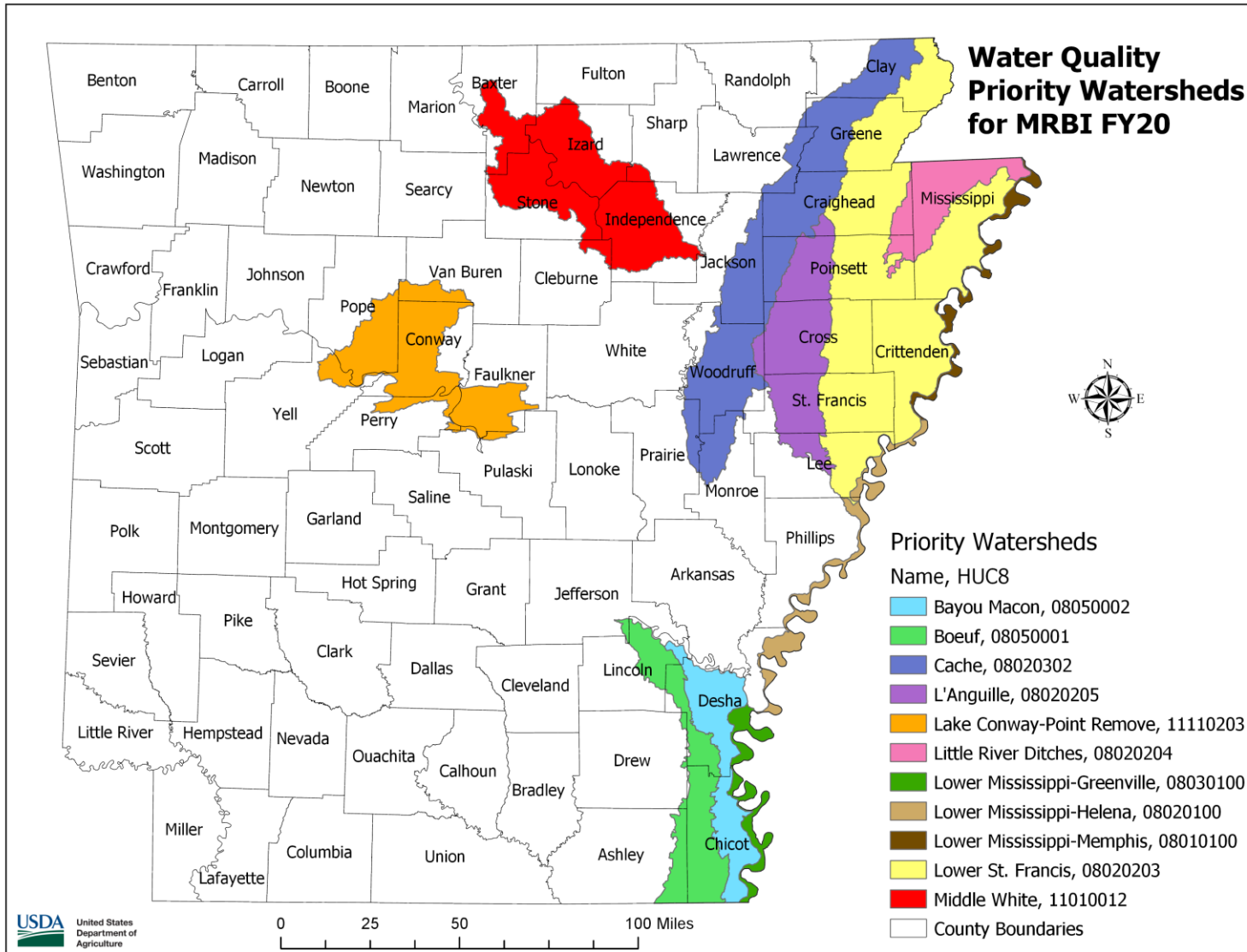
Mississippi River Basin
Initiative and National
Water Quality Initiative



Natural
Resources
Conservation
Service

nrcs.usda.gov/

Priority Watersheds



Natural
Resources
Conservation
Service

nrcs.usda.gov/



Watershed Assessment



Category of Projects: Readiness Phase and Implementation Phase

Readiness Phase projects- FY20

- Twin Creeks-L'Anguille
- Izard County-Strawberry
- Candy Creek-L'Anguille
- Canal 43- Bayou Macon and Bayou Bouef

Implementation Phase- FY20

Readiness Phase Completed in FY19

- Cache River- Cache -
- Middle Cache – Cache
- Lower St. Francis- St. Francis
- Upper Lower St. Francis- St. Francis
- Brewer Lake- Cadron Creek

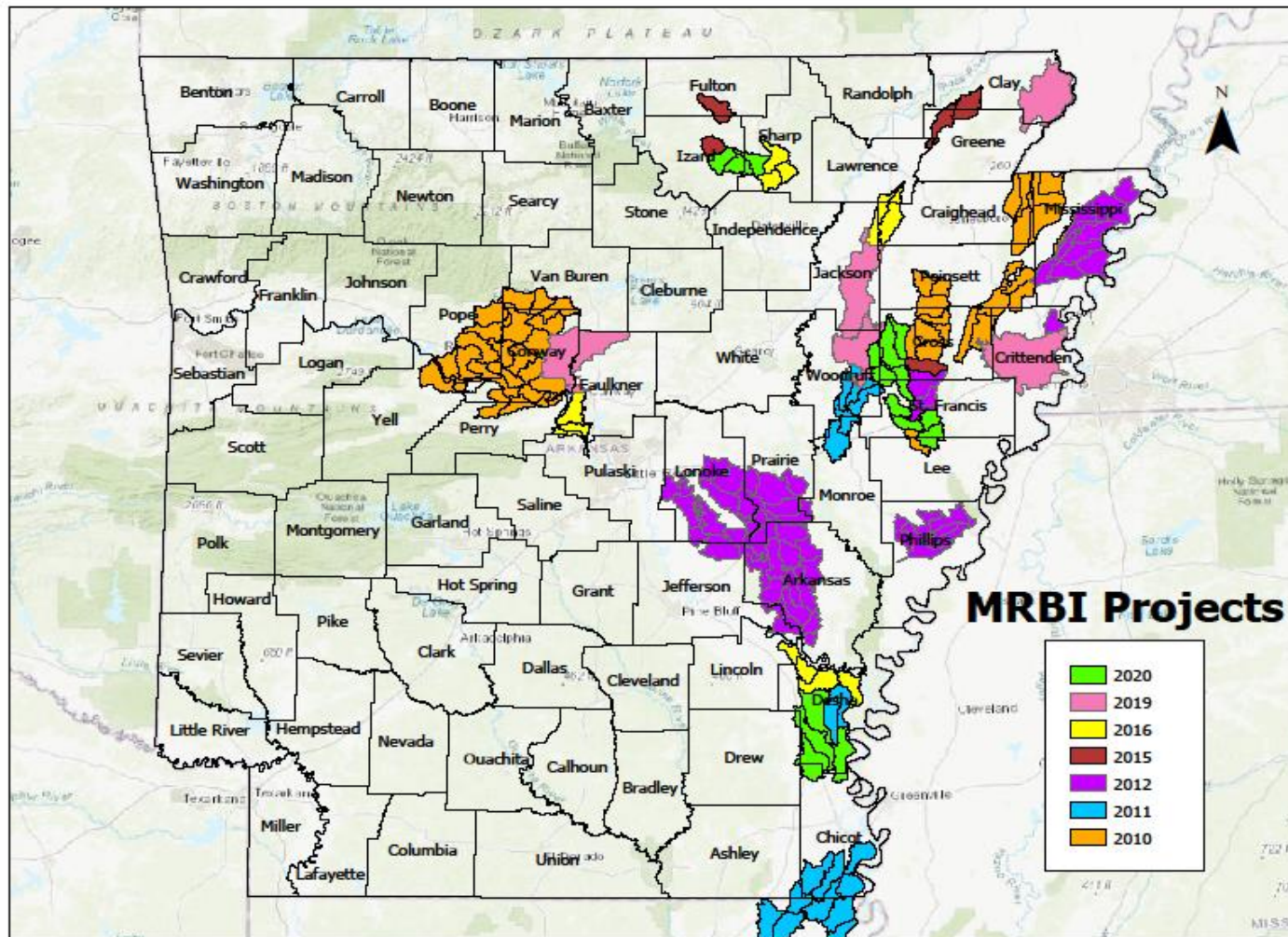
Project	Funding Request EQIP & CSP
Cache	\$4,597,626
Middle Cache	\$4,813,961
Lower St. Francis	\$8,036,189
Upper Lower St. Francis	\$4,440,000
Brewer Lake	\$6,158,470

Natural
Resources
Conservation
Service

nrcs.usda.gov/



MRBI Activity

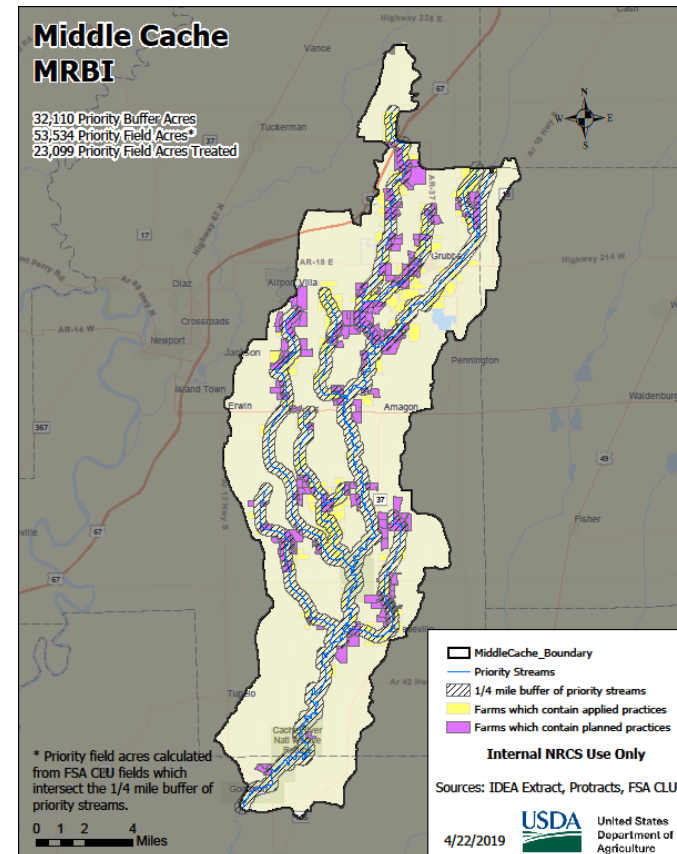
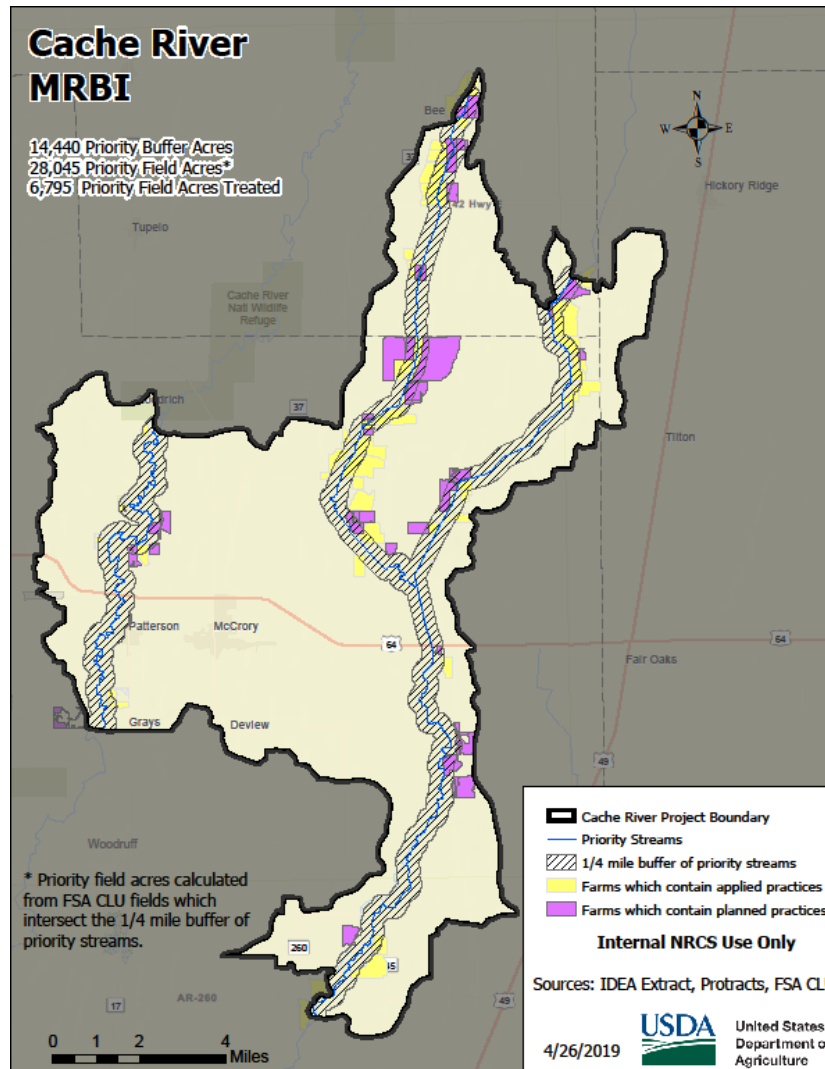


Natural
Resources
Conservation
Service

nrcs.usda.gov/




Targeting in the Watershed





United States Department of Agriculture

 System approach
Management Practices
Practice CAPs
Adaptive management
Local participation



Natural
Resources
Conservation
Service

nrcs.usda.gov/



United States Department of Agriculture



Regional Conservation Partnership Program(RCPP)

Sept. 3rd Announcement
Sept. 23rd meeting at ANRC
10:00-11:30 a.m.
Dec. 3rd Project are due to
NHQ



Natural
Resources
Conservation
Service

nrcs.usda.gov/



United States Department of Agriculture

Contact Information:

Dianne Schlenker

501-301-3152 or 501-412-9852.

[Email-Dianne.Schlenker@ar.usda.gov](mailto:Dianne.Schlenker@ar.usda.gov)



Amanda Mathis

501-301-3162

[Email-Amanda.Mathis@ar.usda.gov](mailto:Amanda.Mathis@ar.usda.gov)



Natural
Resources
Conservation
Service

nrcs.usda.gov/



United States Department of Agriculture



National Water Quality Initiative (NWQI)

Roger Cousins-Acting NRCS Water
Quality Specialist

roger.cousins@usda.gov 870-805-8073

Aug 29th 2019

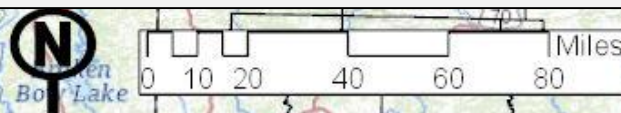


Natural
Resources
Conservation
Service

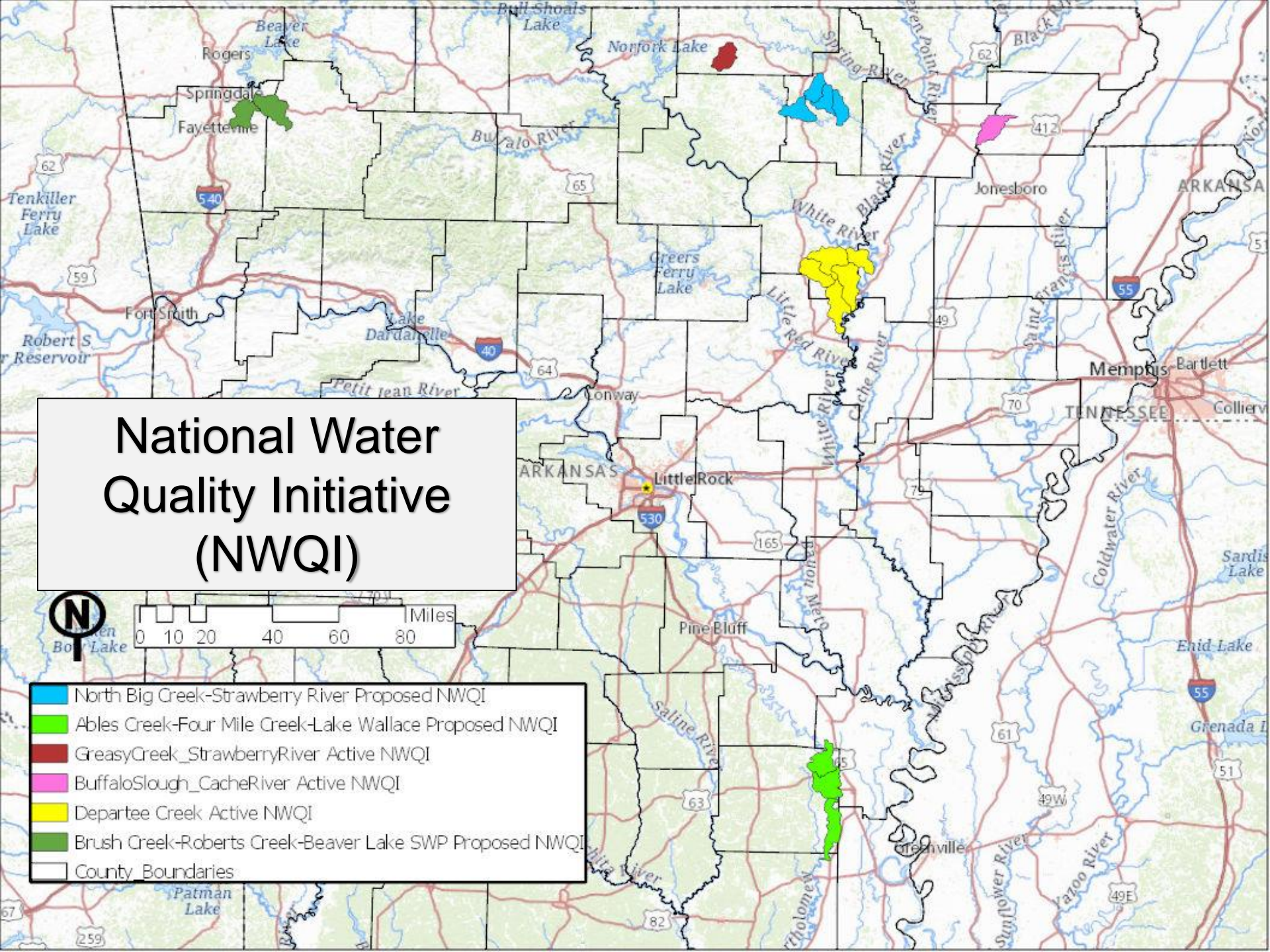
nrcs.usda.gov/



National Water Quality Initiative (NWQI)



- North Big Creek-Strawberry River Proposed NWQI
- Ables Creek-Four Mile Creek-Lake Wallace Proposed NWQI
- GreasyCreek_StrawberryRiver Active NWQI
- BuffaloSlough_CacheRiver Active NWQI
- Departee Creek Active NWQI
- Brush Creek-Roberts Creek-Beaver Lake SWP Proposed NWQI
- County Boundaries



Funding FY19/FY20



FY19

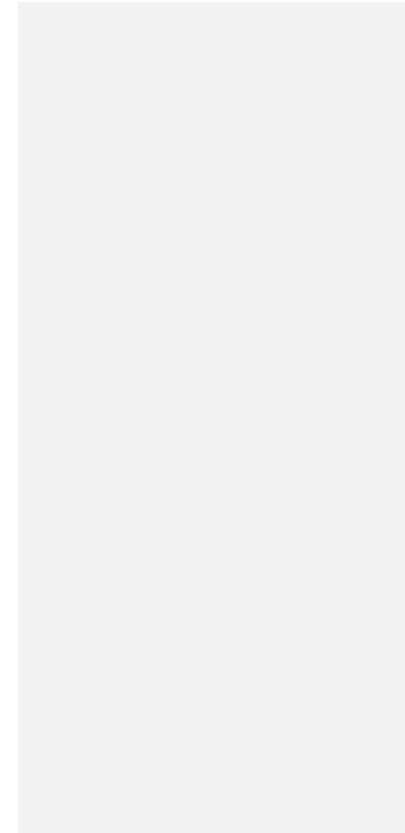
- Greasy Creek-Strawberry River- \$192,026
- Cache River-Buffalo Slough- \$1,446,979

FY20

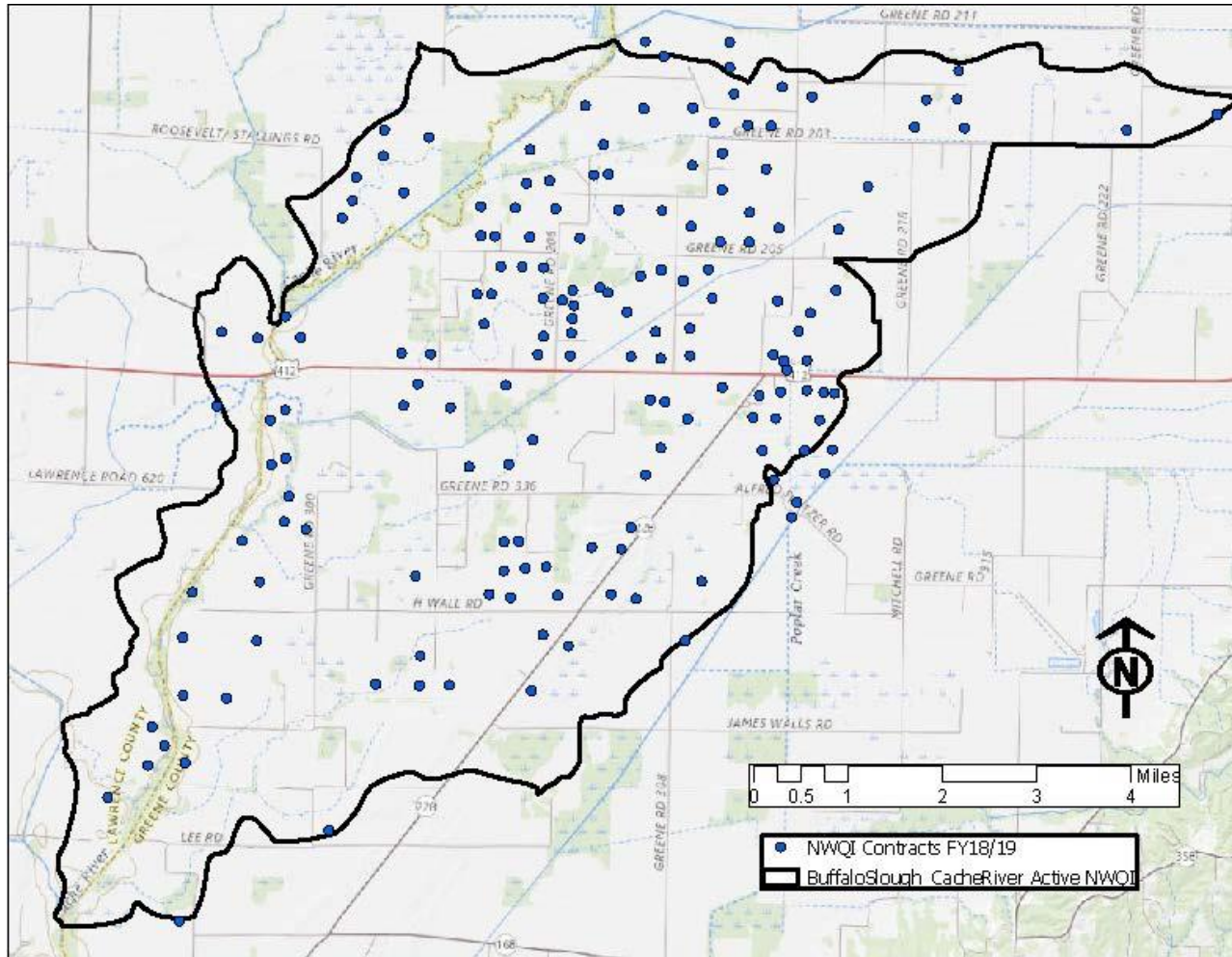
- Estimating \$2,000,000 in FA in FY20, based on SRA
- Greasy Creek-Strawberry River- \$234,000
- Cache River-Buffalo Slough- \$345,000
- Departee Creek- \$1,200,000

FY21

- Based on individual project budget requests
- Will need additional funding in Arkansas for project requests such as North Big Creek-Strawberry River, Beaver Lake SWP, Ables Creek-Four Mile Creek-Lake Wallace



Buffalo Slough-Cache River NWQI



FY18 and FY19 Practice Implementation

- A year end report will be completed to estimate nutrient and sediment load reductions based on practice implementation percentages and the use of a model.
- An ADEQ monitoring site is present however this station is inactive.

Natural
Resources
Conservation
Service

nrcs.usda.gov/









National Water Quality Initiative (NWQI) Requirements

- Water Quality Resource Concerns. STCs must provide evidence that the watershed **meets one of the following**:
 - Impaired. A stream or water body documented to be impaired and identified on a State's 303(d) list (Integrated Report, Section 5).
 - TMDL. A stream or water body that is considered impaired but removed from the 303(d) list because there is a TMDL plan for implementation (Integrated Report, Section 4a).
 - Threatened. A stream or water body with water quality data documenting an impairment, but is not documented in a) or b).
 - Critical. A stream or waterbody upstream of an impaired segment that is determined by the STC to be a significant contributing source of the downstream impairment.
- **Additional consideration is given if streams or water bodies are designated as sources of drinking water.**



NWQI Requirements Continued

- Watershed Plans and Goals. There must be an actionable watershed plan (refer to *Attachment B: NWQI Watershed Assessment Guidance*) that provides the following:
 - Sufficient watershed assessment to guide the siting and implementation of conservation practices at the HUC-12 level for greatest water quality benefit.
 - Identification of critical source areas within the watershed for identified pollutants of concern (a map showing these areas within the watershed is required).
 - Established watershed goals for water quality improvement, with specific metrics that can establish progress towards these goals.
 - Outreach strategies for implementation on vulnerable acres.



NWQI Requirements Continued

- Measuring Progress. STCs should prepare for assessing progress toward meeting watershed goals in NWQI watersheds:
 - When possible, select watersheds where **baseline water quality monitoring data** already exist.
 - Track implementation on the identified critical source areas within the watershed.
 - Report on the specific metrics that were developed with partner input to demonstrate progress in meeting watershed goals. At least one of these interim metrics must be directly related to the water quality concern (e.g., load reduction percentage, pounds of P prevented from leaving field, change in biotic integrity score, change in P index results weighted across the watershed, etc.).



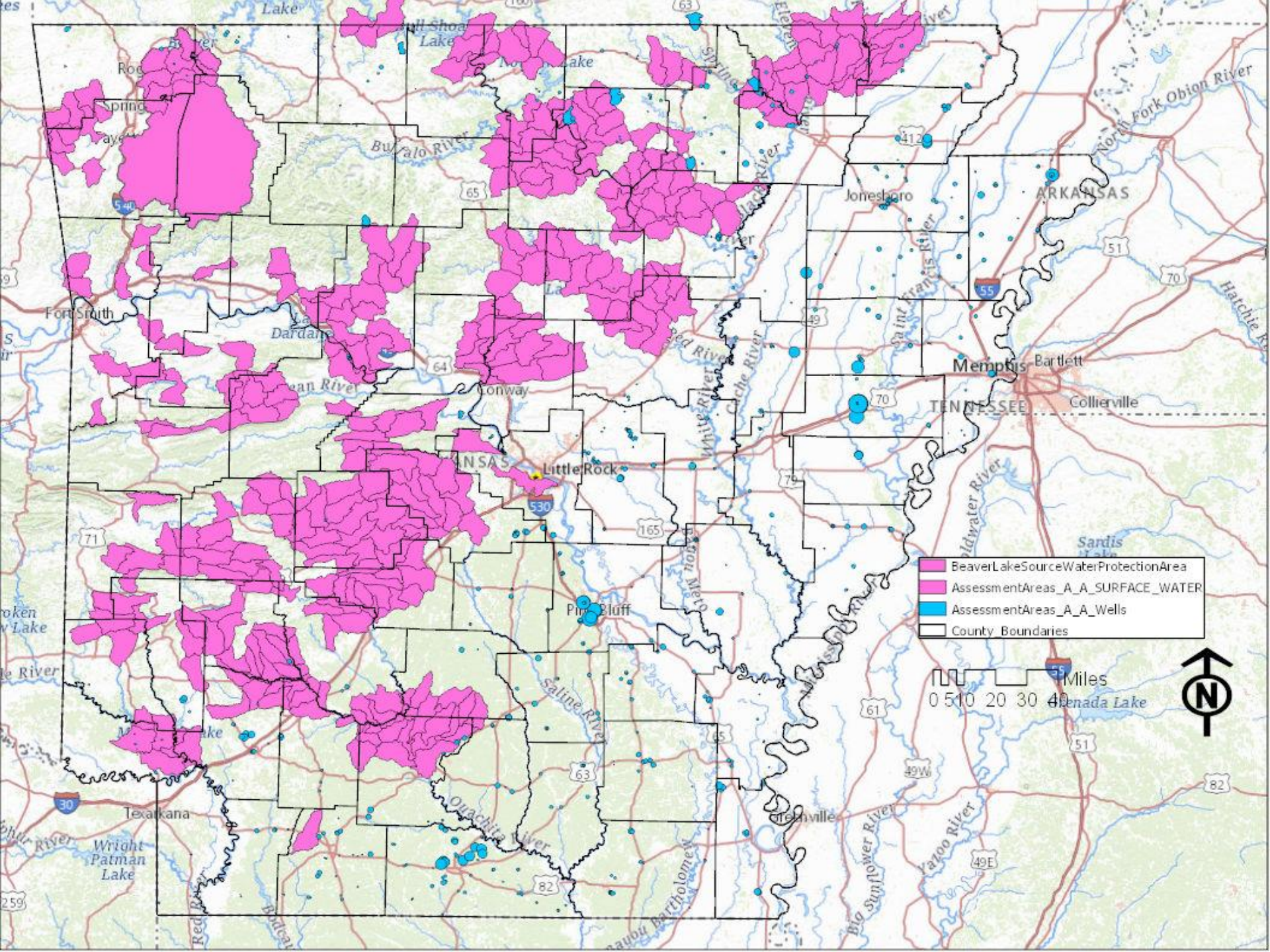
Source Water Protection Priority Areas

Dedication of Funds

NRCS will track compliance with the requirement to dedicate 10 percent of conservation program funds based on agency investments within identified local priority areas. States should select priority areas considering this 10-percent target. Tracking will be done at NHQ, and will include the following:

- **Tracking within each State's local identified priority areas.**
- **Contracted acres and total obligation for contracts with a primary resource concern of water quality degradation or water quantity (insufficient water) will be counted.**
- **Associated technical assistance funds will be counted towards the 10 percent.**
- **Easements (e.g., ACEP-WRE) within identified priority areas will also be counted toward the 10 percent.**





Edge of Field Contracts Monitoring Update

- **Current Status**
- **Encouraging farmers to apply to the program**
- **Preliminary Results**
- **15 Active Contracts in Arkansas**
- **Partners monitor sediment and nutrient runoff data to compare control and conservation practice effectiveness.**

