



40<sup>th</sup> years of  
empowering leaders  
celebrating the legacy,  
shaping the future.

# Event Sponsors

- Arkansas Association of LeadAR Alumni (AALA)
- Arkansas Rice Research and Promotion Board
  - Arkansas Soybean Promotion Board
    - Marvelle Stines, Class 7
    - Joe and Brenda Waldrum
  - Tom and Judy Riley, Classes 1 & 14
    - Diane Tatum, Class 8
    - Andrea Leding, Class 17
  - Steve Higginbotham, Class 3











“

I think the impact LeadAR had on me was to make me a better citizen and a better volunteer. Until you really understand the issues that impact communities, it's hard to act on them and engage others in the work that needs to be done.

”

Ann Owen, Class 11



















Tom opening  
his "prize"  
← Barbara  
Pitts















Melissa  
"my friend"













“

As a county agent and staff chair, it has helped me have a broader perspective of our organization, strengthened my leadership skills, and helped my peers see me as a leader. ”

Brad McGinley, Class 18































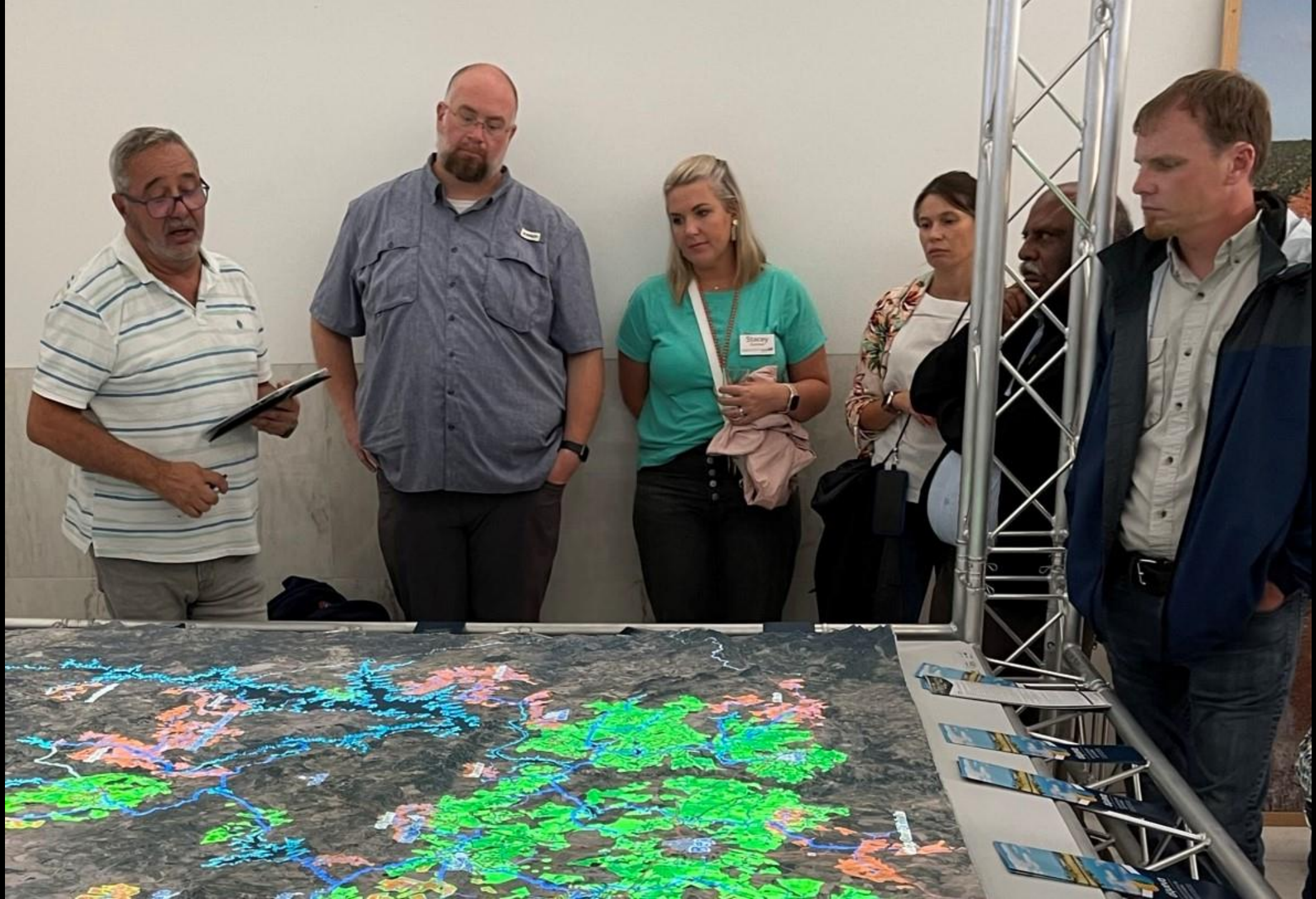


“

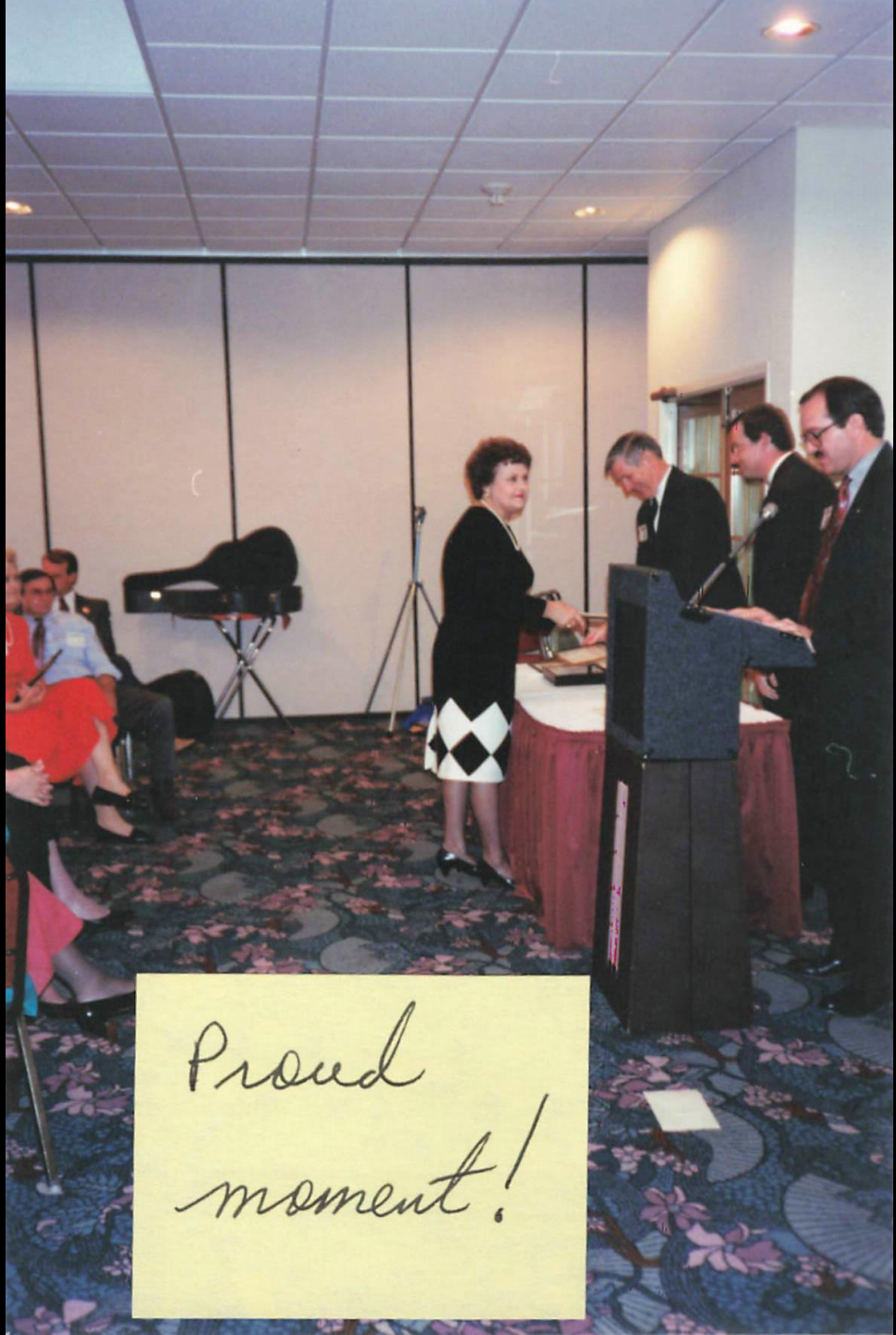
LeadAR taught me to learn to listen to diverse, strong-minded opinions. It was also a new way to take in totally different experiences. I am so appreciative of it.

”

Stephanie Malone, Class 18







Proud  
moment!



























“

A lot of times in our jobs, we tend to be around similar people and situations, LeadAR plucked me from those situations and stuck me in an environment of diverse people and surroundings that provided an opportunity to learn about different perspectives.

”

Jonathan Duran, Class 18





### CLASS I GROUP PHOTOGRAPH (1984-1986)



**Left to Right:**

**Front Row:** Don McMillen, Kelley Erstine, Bettye A. Cooper, Peggy Chatters, Sherry Welch, Jon Plafcan, and Mike Dumas. **Second Row:** Bert Greenwalt, Doug Hicks, Don Glover, Jerry Scott, Rudy Furr, and Roy Baxley. **Third Row:** Randy Chick, David Hillman, Edwin Edwards, Jim Scott, Herschel Cleveland, Claude Kennedy, and Bill Cook. **Back Row:** Tom Riley, Roy Reynolds, Ricky Mercer, Clyde West, Larry Key, Jim Vaughan, Charles Foot, and J. B. Williams. **Not Pictured:** Mike Cooley.























“

My favorite aspect of LeadAR was the networking. I gained a class of best friends. I now have a whole family to call on when needed.

”

Donette Spann, Class 18



 **SERVICIO SOCIAL DE IGLESIAS  
DOMINICANAS INC.**  
**HEIFER PROJECT INTERNATIONAL**  
**CENTRO DE CAPACITACION TECNICO-CAMPESINA  
CUARENTENA Y PRODUCCION ANIMAL**









**Alan McVey**  
 Prairie County - Des  
 Arc  
*Logging  
 Contractor/Vice  
 President/Part Owner  
 McVey Logging Co.,  
 Des Arc Alumni  
 Assoc., AR Fed. of  
 Young Republicans,  
 City Council, Chamber  
 of Commerce*



**Niagle Ratchford**  
 Searcy County -  
 Marshall  
*Beef Cattle & Hog  
 Producer, Searcy  
 County Assessor,  
 Searcy County Farm  
 Bureau, Searcy  
 County Cattleman's  
 Association*



**Faye Rodgers**  
 Van Buren County -  
 Clinton  
*Sales Proprietorship -  
 Jewelry/City Clerk,  
 Past President  
 Jaycettes, Chamber of  
 Commerce, City  
 Beautification  
 Organizer, Municipal  
 Clerks of Arkansas*



**Diane Watt**  
 Ashley County -  
 Crossett  
*Program Director,  
 Ashley County Adult  
 Education/Literacy, AR  
 Education Assoc.,  
 Secretary/Treasurer  
 County Literacy  
 Council, Chamber of  
 Commerce, County  
 Industrial Dev. Com.*



**Chris Welch**  
 Jackson County -  
 Newport  
*General Contractor,  
 Newport City Council,  
 Member, Chamber of  
 Commerce Board,  
 Division Chairperson,  
 United Way*



**Tim Whisenhunt**  
 Lafayette County -  
 Bradley  
*Farmer, Self-Employed  
 President, Southwest  
 AR Assoc. of Cons.  
 Districts, Exe. Board,  
 State Assoc. of Cons.  
 Districts, Vice-  
 President, Farm  
 Bureau, Chamber of  
 Commerce*



**Delores Van Hodge**  
 Clark County - Gurdon  
*Director, Gurdon  
 Family Friends Proj.,  
 Director, Clark County  
 Youth Development  
 Center, AR Teachers  
 Assoc., National  
 Education Assoc.,  
 NAACP, Order of  
 Eastern Star*



**Kenneth Hubbard, Jr.**  
 Boone County -  
 Harrison  
*Optometry/Hay & Beef  
 Farming, Vice-  
 President, AR  
 Optometric Assoc.,  
 Chairman, County  
 Airport Board, Boone  
 County Special  
 Services School Board*



**Tom Kimmons**  
 Van Buren County -  
 Shirley  
*Director, Community  
 Dev. Corp./  
 Philosopher/Song-  
 writer, AR  
 Philosophical Assoc.,  
 Com. Dev. Society,  
 AR Municipal League,  
 AR Gov. School  
 Instructor*











# Eagle Sponsors



**FARM CREDIT**



**Electric Cooperative  
of Arkansas**

*We Are Arkansas*









“

My LeadAR service project was to secure a building and begin the process of making a community library.

Getting the building donated was the easy part! Then, began the funding and the actual work to repair an 1894 bank building into a library. From start to finish, it took seven years. In that time, we raised over \$250,000, much of which was generated through an annual Chili Supper and Dessert Auction.

”

Judy Riley, Class 14













“

The national and international study tours were the highlight of my LeadAR experience. The DC study tour was a critical component of my career. I do a lot of Congressional liaison work. Meeting people face-to-face that I worked remotely with for years was a highlight for me.

”

Mary Wood, Class 18















“

Participation in LeadAR really broadened my perspective toward community development and allowed me to participate in a shared vision for Arkansas.

”

Sam Amerson, Class 4











# Event Sponsors

- Arkansas Association of LeadAR Alumni (AALA)
- Arkansas Rice Research and Promotion Board
  - Arkansas Soybean Promotion Board
    - Marvelle Stines, Class 7
    - Joe and Brenda Waldrum
  - Tom and Judy Riley, Classes 1 & 14
    - Diane Tatum, Class 8
    - Andrea Leding, Class 17
  - Steve Higginbotham, Class 3







“

Joining LeadAR is one the best decisions I have made in terms of improving my leadership skills to better serve people in my community, home, and work—wherever I am involved in something.

”

Rickey McCauley, Class 18





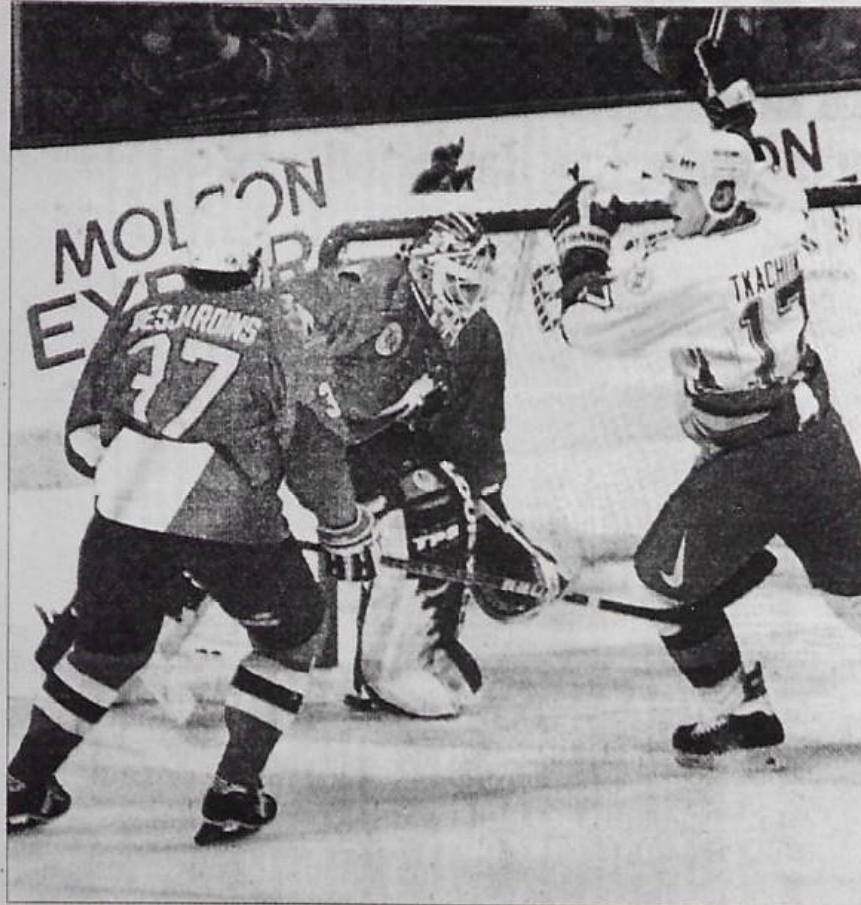






# Damn Yankees

## *Americans win World Cup*



PIERRE OBENDRAUF, GAZETTE

Keith Tkachuk of the U.S. exults after teammate Brett Hull's first-period goal in 5-2 American victory over Canada.

## The birth of a new Cold War

The gentlemen were young, noisy – and wrapped in more Maple Leafs than your lawn on the first of October.

"Who won the 100 metres?" they shouted outside the Molson Centre before last night's Brawl for it All between Team U.S.A. and Team Canada. And of course they were happy to supply the answer: "CA-NA-DA!"



Smith and Tremblay united to repel the invasion from the south.

But it may take more than unity to stop this invasion. Two quick third period goals by Brett Hull and Tony Amonte last night – both of them given replay scrutiny by referee Terry Gregson – gave the upstart Americans a 5-2 victory and bragging rights for hockey supremacy by winning the





















Office DEPOT

## Strategic Business Acumen

BUILD SUPPORT

EFFECTS of A

COMPARE WITH  
SUCCESS

USE ALL OF  
STRATEGIC  
FINANCE  
MARKETING  
"R&D"

You gain strength, courage and confidence by every experience in which you really stop to look fear in the face. You must do the thing you think you cannot do.

—Steven Reinhardt

“

I appreciated the variety the program offers. I am from Arkansas, but because LeadAR is held in different areas of the state and we met mayors, community leaders, saw the sites and attractions, and learned about local economies, I learned so much more about my state.

”

Laura Hendrix, Class 16



# Eagle Sponsors



**Electric Cooperative  
of Arkansas**

*We Are Arkansas*



































## DOMESTIC CONSUMPTION OF COCOA

1. SWITZERLAND	5.89 kg
2. BELGIUM	5.69 kg
3. IRELAND	4.02 kg
4. NORWAY	4.02 kg
5. GERMANY	3.96 kg
6. DENMARK	3.89 kg
AUSTRIA	3.80 kg
UNITED KINGDOM	3.64 kg
FRANCE	3.62 kg
FINLAND	3.02 kg
ISRAEL	2.96 kg
GREECE	2.60 kg
USA	2.46 kg
THE NETHERLANDS	2.28 kg
SPAIN	2.28 kg

SOURCE: FAO.ORG











































One of my most enjoyable aspects was that we had such a cross-section of participants: producers, power company, non-profits, elected officials, etc. It allowed us to hear different thoughts and ideas and different things that were pressing and important to various groups. It gives you an experience outside of your own silo and provides a state-wide, national, and international level of thinking.



Kris Boulton, Class 16













# Event Sponsors

- Arkansas Association of LeadAR Alumni (AALA)
- Arkansas Rice Research and Promotion Board
  - Arkansas Soybean Promotion Board
    - Marvelle Stines, Class 7
    - Joe and Brenda Waldrum
  - Tom and Judy Riley, Classes 1 & 14
    - Diane Tatum, Class 8
    - Andrea Leding, Class 17
  - Steve Higginbotham, Class 3



Identify your stressors and frustrations.  
Identify a song that best fits your color.

True Colors<sup>®</sup>  
INTERNATIONAL

Idealistic Warm  
Peaceful Imaginative  
Spiritual  
**Sincere**  
**FLEXIBLE**  
Sympathetic Enthusiastic













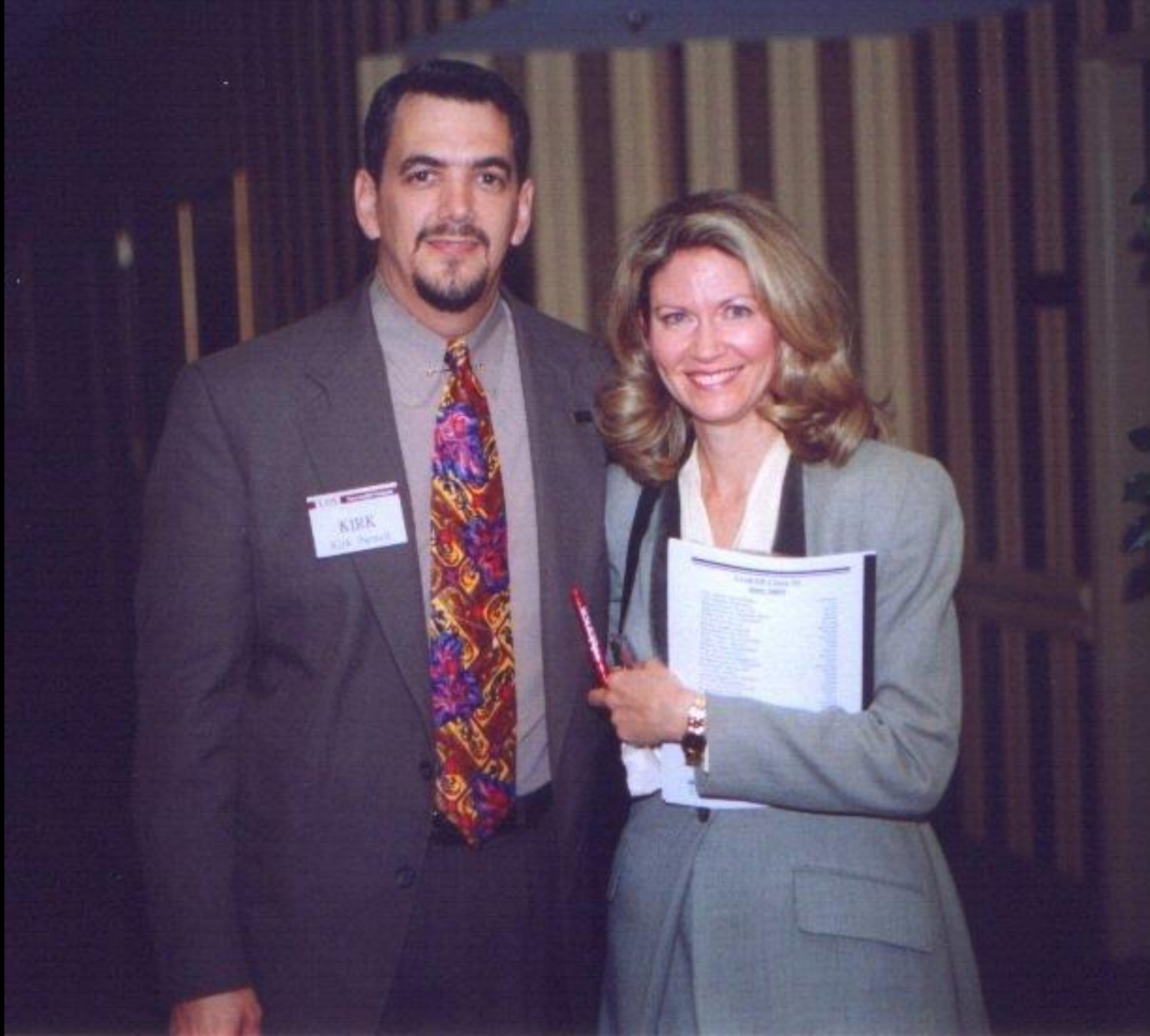


















“

One of my most memorable LeadAR experiences was in the judicial and law enforcement seminar, we went into the county jail in Van Buren. They locked us in, and it's a funny feeling knowing you cannot leave until someone lets you out.

”

Louis O'Quin, Class 16































Sargeant@Arms Mary Jo Tucker

Interest Groups Must Request to  
be on School Board Agenda  
-Send Representative to

Preservationists u  
Present to School  
Followed by School  
Groups then to























“

I cannot say enough about LeadAR. I learned  
as much from questions asked by my  
classmates as I did from the speakers.

”

Teresa Cole, Class 3























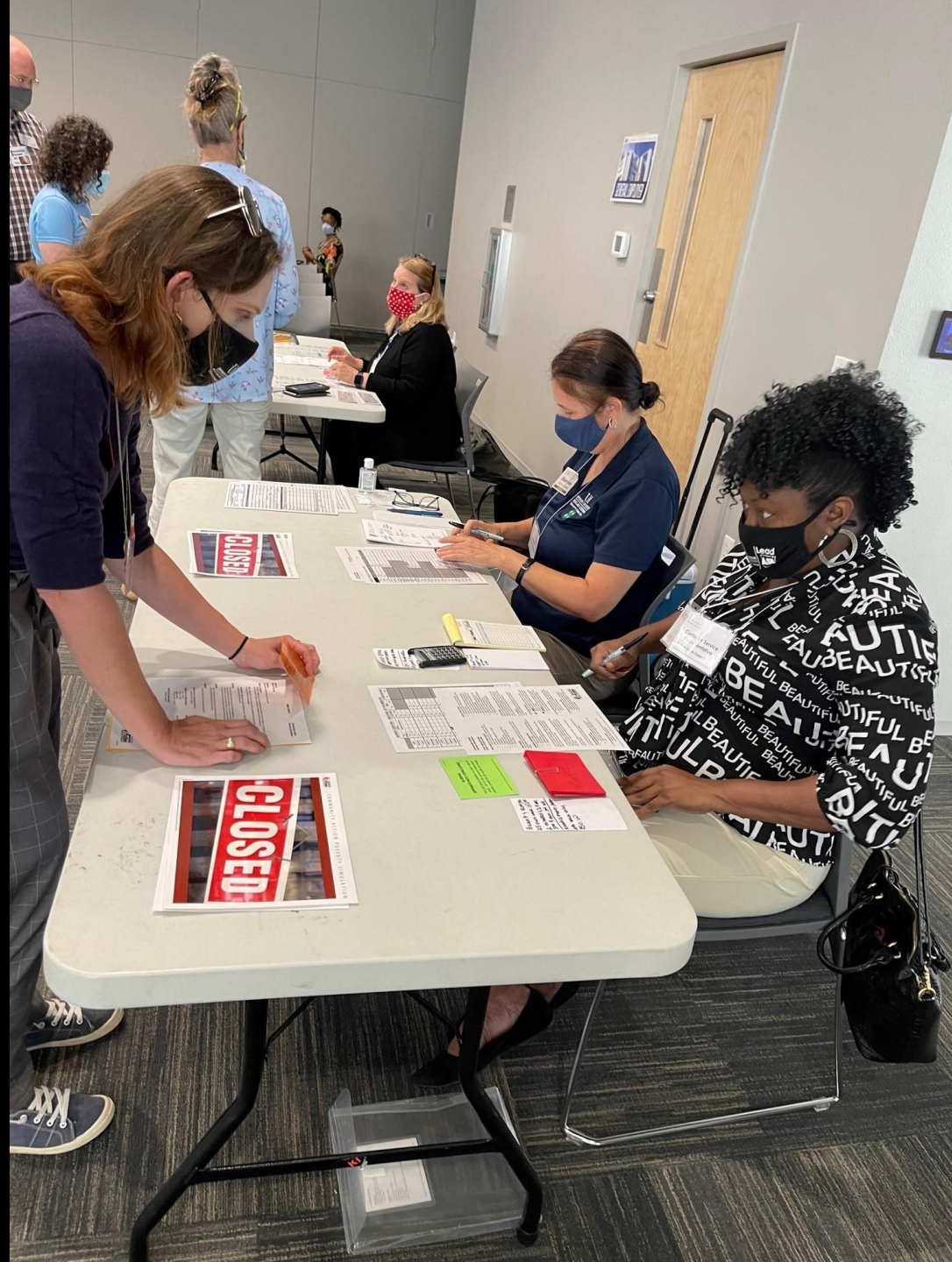
Bu aziz heykelin  
önünde duran Türk  
hürmetle eğilir  
hilletini kurtaran  
cumhuriyeti kuran  
aleme yeni bir tarih yaratan  
cazi  
MUSTAFA  
KEMAL























Play (k)



0:00 / 1:54







8 5 '98











Boar of Arcadia  
Marble, 1st century AD  
Vatican Museums  
Room 64













UofA

**DIVISION OF AGRICULTURE**

**RESEARCH & EXTENSION**

*University of Arkansas System*

**LeadAR**

CELEBRATING



YEARS

