

BL

BLUE LETTER

August 2020

No. 3820



FROM THE DIRECTOR

Pushing Forward

First, I just want to say that it has been an eye-opening first month for me on the job. I am incredibly impressed and encouraged by the efforts of all of you to keep our programs and efforts going in the face of the coronavirus pandemic. I wish I could say as I am writing this note that cases are down and that we will soon be returning to a new normal. Sadly, this is not our current situation. While COVID-19 cases in Arkansas have plateaued and been somewhat stable, the numbers are too high. Our own work force has been affected; I wish all those affected by this virus a speedy recovery.

We were able to pull off our first “Open Chat” last month with me as the new director. It went well, and I want to thank all those involved with special thanks to you for attending, as well as to Tracy Courage, Julie Robinson and Mary Poling. One objective that we had for this first Open Chat was to come up with a new format and name for Conversations with Cartwright. We were successful in doing that and are in the process of planning that first event. More on this later!

So many of you deserve recognition for a job well done during this crisis that I am hesitant to call individuals out for fear of leaving many out. But I can honestly say what would we do without folks like Mary Poling, Matt Brown, Christina Miller, Karen Ballard, Jessica Smith, and our entire IT and Communications groups. Their efforts

to help us move to a digital platform for meetings with Zoom and our change to Workday will not soon be forgotten. I am sure we are all grateful that our first payday was a success.

I want to send a shout-out to our ag specialists and our special training team of Hank Chaney, Andy Vangilder and Blair Griffin. They have provided our county agricultural agents an opportunity to meet in the field for on-the-job training. In a couple of cases, due to social distancing rules, these trainings were repeated multiple times to accommodate small groups. This extra effort is appreciated, and by most accounts it worked well as more agents were able to engage directly. This is an example of how we may rethink some of our efforts and evaluate what we have learned as we go forward – post-COVID. Also, we have started our virtual field days, beginning with the Rice Virtual Field Day on Aug. 20. Please help promote these and attend. This is a major outreach effort for us.

Although many of our 4-Hers may be disappointed about fair closures, there has been some positive news. I want to congratulate our three finalists for the Governor’s 4-H award — Abigail and Isabella Norsworthy from Washington County and Sarah Gaskin of White County. I was lucky enough to have lunch with these outstanding

Continued on page 3

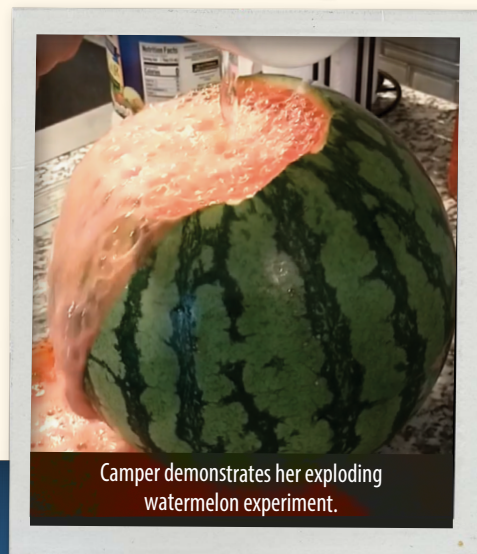
INSIDE SCOOP

2. Kelly Vierck Joins
Animal Science Faculty
3. Thorpe Wins AAAED
President’s Award
4. Extension Partners with Ark.
Agritourism Association
5. Summer of Savings
6. Virtual Cooking Class a Success
7. Tech Corner
8. CPED Welcomes New Team Members
...And much more!

Virtual Camp Focuses on Agriculture Literacy

Students from across the state learned about rice, watermelons, forestry, dairy cattle and other topics during a multi-county virtual camp conducted by Becky S., Brandi D., Hanan D. and Sara Beth J.

Twenty-one youth from 10 counties participated in the week-long camp, which offered daily video lessons about agriculture topics and hands-on activities such as experiments, crafts and snacks. The camp week wrapped up with a live Zoom meeting. Youth were invited to a private Facebook group where they could introduce themselves to other and post pictures of their completed projects.



Camper demonstrates her exploding watermelon experiment.

Kelly Vierck Joins Animal Science Faculty

Kelly Vierck joined the Department of Animal Science faculty ranks in June and will be focusing on meat science and muscle biology.

"I look forward to establishing an exemplary meat science education program at the University of Arkansas," Vierck said. "Through the implementation of experiential, hands-on labs and lectures, I want to bring cutting-edge research and industry-focused knowledge full circle to develop students into career-ready alumni who are demanded by the meat industry."

Vierck received her Ph.D. from Texas Tech University,



Kelly Vierck

where her dissertation focused on the postmortem influences on beef flavor development and tenderness. She earned an M.S. from Kansas State University and a B.S. from Oklahoma State University as a food science major with an emphasis on meat science.

Vierck previously served as a graduate research assistant within the Department of Animal and Food Sciences at Texas Tech University where she taught numerous animal and food science courses, produced scientific research publications and participated in the National Cattle-men's Beef Association-Product Quality Research Program. ■

Beware of Fraud During Pandemic

The Arkansas Division of Workforce Services and the attorney general's office are warning Arkansans that their identities may be used to obtain unemployment benefits. This scam has already hit some state and Division of Agriculture employees.

Not only can this fraudulent activity damage your credit score, but it also costs your employer and taxpayers money. If you receive a notice from the Division of Workforce Services that benefits have been applied for fraudulently in your name:

- File a police report and then contact the Arkansas

Department of Workforce Services' fraud hotline at 501-682-1058.

- Report the fraud to your employer to ensure you do not get an IRS Form 1099 form for money someone else received in your name.
- Obtain new copies of credit reports from the three major credit reporting agencies (i.e., Equifax, TransUnion and Experian) to confirm that no additional lines of credit were opened in your name and consider requesting a fraud alert or a security freeze to prevent more fraudulent activity. ■

Thorpe Wins AAAED President's Award

BL
3



Tonisha Thorpe

Tonisha Thorpe, legal/compliance assistant in the state office, received the American Association for Access, Equity and Diversity President's Award, which recognizes outstanding service to the organization. She'll be honored Oct. 8 in a virtual awards ceremony.

Thorpe became a member of the organization last year and completed coursework to become a Certified Affirmative Action Professional. She became

very involved with the organization and volunteers many hours. She recruits volunteers to be moderators and speaker handlers during the AAAED National Conference, sends out e-mails to volunteers and now that meetings are held virtually due to COVID-19, she serves as a technical liaison to assist individuals who have trouble connecting. She also assists the moderators by setting up poll questions and monitoring chat boxes for questions. ■

Animal Science Group Teams Up with Poultry Science

to Provide Video Tours of Red Meat Abattoir

Department of Animal Science staff and faculty members Tim Johnson, Kelly Vierck and Janeal Yancey recently teamed up with John Marcy (Poultry Science) to provide a filmed tour of the university's red meat abattoir for the Arkansas Farm Bureau to use in the organization's virtual Officers and Leaders Conference.

The tours took place in late July and provided an opportunity for the group to showcase some of the equipment and research capabilities of the departments. The video tour can be viewed on Arkansas Farm Bureau's website at arfb.com. ■



Janeal Yancey works on filmed tour for Arkansas Farm Bureau conference.

Pushing Forward from page 1 continued...

young people at the Governor's Mansion with Gov. Hutchinson and First Lady Susan Hutchinson. They are awesome representatives for us as they exemplify the kind of impact 4-H programs can have. Isabella Norsworthy is this year's winner.

I want to also pass along that Dr. Martha Ray Sartor was successful in fully funding the Dr. Rick and Lynette Cartwright Scholarship Endowment with over \$50,000 in donations. This money will help young people pursuing a college education while honoring Dr. Cartwright's career with the Cooperative Extension Service. In addition, the National 4-H Council's Board of Trustees met and

officially confirmed Sara Gardner of Fayetteville as a new member of the Young Alumni Advisory Committee. This is a real honor. Please join me in congratulating all these 4-H folks and others for their many accomplishments.

Finally, we have begun the process of forming promotion committees, and soon you should be receiving letters about this year's process. If you are considering applying for promotion, the time to start that process is coming up soon. Please continue to develop your Workday skills. Attendance at online trainings has been good, and the ones I have sat in on have been valuable. ■

Extension Partners with Arkansas Agritourism Association

for Fall Farm Activities

Corn mazes, hayrides, pumpkin patches - with September around the corner Arkansas farms are gearing up to host quintessential fall activities, which generate not only nostalgia but also additional agricultural revenue. With COVID-19, safety preparations will be key as guests visit farms. The Arkansas Agritourism Association had this foresight this summer, and brought the idea of creating a *Fall Farm Activities & COVID-19 Safety Guidance* resource to extension's Local, Regional, & Safe Foods team lead by Dr. Amanda Philyaw Perez. Rip Weaver, program assistant, developed this resource which was released in August.

The foods team also hosted a *Local Foods Open Space Discussion* on the same topic in July. Guest speakers included Ruth Pepler, Arkansas Agritourism Association president and owner of Dogwood Hills Guest Farm in Harriet, and Jeff Jackson, environmental supervisor-retail food program at the Arkansas Department of Health. They shared policy

updates, resources and first-hand experiences on COVID-19 safety measures on the farm. This discussion was later highlighted on KATV Channel 7 news.

The fall activities guidance resource and discussion recording can be found on extension's website at www.uaex.edu/localfoods. ■

FALL FARM ACTIVITY GUIDELINES & COVID-19

Each fall, many farms host a variety of season-specific activities including corn mazes, wagon rides, and pumpkin patches. These activities are beloved by Arkansians and also generate a large percentage of annual income for farms. The coronavirus has caused some hesitation, yet with preparation farms can remain open while managing risk. Consider these safety tips and suggestions to ensure that your activities are safe for all your guests and staff.

Farms that host the activities highlighted in this resource are considered large indoor or outdoor venues and must adhere to the Arkansas Department of Health's Directives for Large Indoor Venues or Large Outdoor Venues. These directives took effect on June 15, 2020 and supersede any recommendations in this resource. You should become familiar with them as you prepare for guests at your farm this fall. If you plan to have more than 100 guests at your farm at any one time, you must submit a plan to the Secretary of Health with the Submission Form for Agriculture-Related Events.

As of July 20, 2020, a state-wide executive order requires that all persons at both indoor and outdoor venues, including farms, must wear a face covering if a distance of at least six feet cannot be maintained. There are exceptions (e.g., eating, drinking, public speaking, children under 10 years of age), however it is encouraged to wear a face covering even in many of those situations. Please see the Face Coverings Directive for more information. (Para la versión en español, consulte la Directiva de reversiones faciales.)

RECOMMENDED ACTIVITIES	UNRECOMMENDED ACTIVITIES
Corn & Hay Mazes	Activity Courses & Playgrounds
Shows, Entertainment, & Other Performances	Games & Shared Equipment
Petting Zoo	Eating Contests (unless socially-distanced)
Pumpkin Patch	U-Pick Activities
Wagon & Tractor Rides	Haunted Houses

GENERAL CONSIDERATIONS:

- Will my farm operate and host any fall activities this season? If so, which ones? (See list above for recommendations.)
- Do we have enough staff to operate safely? Can we rearrange working hours to properly staff events and activities?
- Can we restructure to accommodate reservations, timed entries, and wait times?
- What additional resources and materials (e.g., tickets, signage, hand sanitizers, gloves, masks, barriers) will we need to implement safety measures?

Logos for AR, UA, DIVISION OF AGRICULTURE RESEARCH & EXTENSION, LOCAL, REGIONAL & SAFE FOODS, and AGRI-TOURISM are displayed.

New Fall Farm Activity Guidance & COVID-19 Resource.

ARKANSAS AGRI-TOURISM
WE GROW TOGETHER

LOCAL, REGIONAL & SAFE FOODS

We Did It!

Thank you for helping us reach our goal of raising **\$50,000** for the Rick & Lynette Cartwright 4-H Scholarship Endowment!

The Arkansas 4-H Foundation

U of A DIVISION OF AGRICULTURE RESEARCH & EXTENSION
University of Arkansas System

Animal Science Alumnus Leads Team

BL
5

in Developing Rapid COVID-19 Diagnostic Test

Kevin Clark, an alumnus of the Department of Animal Science, and his team at NOWDiagnostics in Springdale, Ark., have created a rapid diagnostic test for COVID-19 that provides an easy-to-use, at-home solution requiring no additional equipment for processing and reading.

“Across the country, there is an unmet demand for all types of COVID-19 testing to help respond to this unprecedented pandemic,” Clark said. “We know that high-quality, easy-to-use tests will be key to overcoming COVID and to getting America up and running again.”

The ADEXUSDx® test, which is currently being evaluated

through clinical trials, takes 15 minutes to get a result and requires only a drop of blood obtained through a sample stick. Ultimately, the goal is to obtain authorization for anyone in the U.S. to have access to this technology. An application for Emergency Use Authorization in the U.S. was submitted to the Food and Drug Administration in May and is pending review.

Clark graduated from the University of Arkansas in 1986 with a B.S. in animal science and then began a M.S. program in immunology. He received the Young Alumni of the Year Award in 2001 and was named a Department of Animal Science Graduate of Distinction in 2014. ■

Summer of Savings



White County FCS Agent Katie Cullum, White County 4-H Agent Amy Heck and 4-H Program Assistant Nancy Evans offered Summer of Savings — or SOS — challenges for families and youth in White County.

The program offers challenges and tips that can help families set goals and save money. Katie, Amy and Nancy created and posted video challenges weekly in a Facebook group during June. Group members who commented or posted had their names added to a drawing, and a lucky winner received a July 4th party pack.

In July, savings tips were posted weekly. Members were encouraged to share how they were saving and how they planned to spend their savings. This month's topics include how to prepare homemade items in the kitchen, price comparisons and how to pack a school lunch on a budget. The series is intended to encourage 4-H members to explore 4-H projects such as consumer education and decision-making skills.

The parents in the group have also learned about decision-making skills, utilizing resources and savings skills, along with ideas for teaching money skills to their children. ■



SUMMER OF SAVINGS

CHALLENGE
WHITE COUNTY



U of A
DIVISION OF AGRICULTURE
RESEARCH & EXTENSION
University of Arkansas System



Virtual Cooking Class a Success!

Lonoke Co. youth and families were treated to online cooking classes hosted by FCS agent Dianna Bowen this month.

Eleven families with 24 youth learned cooking skills and practiced recipes through weekly lessons using a private Facebook Group. Each family received a camp kit with lesson instructions, recipes and ingredients for each recipe. After watching the video, the youth prepared the recipe and posted pictures and comments to the FB group.

Lessons highlighted the food groups and gave participants an opportunity to taste foods prepared using different methods. Lessons also focused on food safety, knife skills, mixing methods and had a physical activity and family meals component. Youth and parents all enjoyed the class. One youth commented: "It was fun making the recipes together and getting to try new things." ■



Animal Science Alumnus Leads Penn State Team

to 2020 ASAS Academic Quadrathlon Championship

Department of Animal Science alumnus Ben Williamson and his team of students from Penn State University won the 2020 National Academic Quadrathlon held during this year's American Society of Animal Science (ASAS) meetings in July.

Williamson earned a master's degree with a focus on reproductive physiology from the University of Arkansas in 2012 under the tutelage of Michael Looper and Charles Rosenkrans. He is now an instructor, livestock judging coach and an advisor for Collegiate Cattlewomen within the Department of Animal Science at Penn State University.

"Our students were resilient in not only preparing for the contest, but also embracing an alternative platform," Williamson said of this year's virtual meetings. "It is a great accomplishment that reflects first on our students and second on our program."

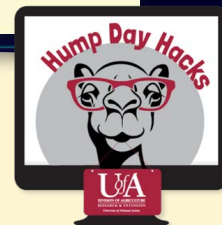
The ASAS Academic Quadrathlon is comprised of four sections: lab practicum, written test, group presentation and quiz bowl. ■





Tech Corner

BL
7



TECH ME SERIOUSLY

Introducing the TECH ME Seriously Vlog!

Definition of a Vlog: a video blog.

The TECH ME SERIOUSLY Vlog covers emerging and innovative tech topics, how-to demos, LRSO IT projects, requested tech topics and much more!

Check out the latest TECH ME Seriously vlog posts:

- Security features in Zoom.
- Webcasting live with Panopto and Zoom.
- Zoom 5.2.0 feature updates.

Visit <https://employees.uaex.edu/techmeseriously> to view vlogs.

FoxIT PhantomPDF

Are you in need of a PDF editing software, but don't want to pay the \$150/year subscription for Adobe Acrobat Pro? FoxIt PhantomPDF is the solution for you.

Currently the IT department is able to provide this software at no cost to employees. For more information visit <https://division.uaex.edu/employees/information-technology/it-software/foxit.aspx>.

Publications

The CES Warehouse/Publication Ordering System is now live and available for use.

Go to: <https://pubs.uaex.edu>.

IT Support Get Help Fast

Submitting a "Support Request" is the quickest way to get the help you need. Use this link to submit your request to the Division of Ag Help Desk: https://uaex.formstack.com/forms/call_center_direct.

The link can also be found on the Division Employees main page under "Need Help?": <https://division.uaex.edu/employees/>.

Telework Tuesday



Join IT for their weekly open office drop-in session for answers to your software/hardware questions. Anything from Box, Zoom, Outlook, OneDrive to monitors, printers, cabling and all other techie stuff.

When? Every Tuesday from 2 – 3 p.m. Look for the link to join in the Weekly Tech Talk newsletter delivered to your inbox on Monday afternoons. ■

UPCOMING TECH TUESDAY WEBINARS

- Tuesday, Sept. 8: Microsoft Teams – Connect, Collaborate & Empower Together
- Tuesday, Oct. 13: Foxit Pro – The Game Changer

Did you miss the Workday Ready Tech Tuesday topics? Visit <https://uaex.edu/techtuesdays> to view recordings.



CPED Welcomes New Team Members

CPED has hired three new employees as regional program coordinators for the Create Bridges program.

All three are working directly with retail, tourism, entertainment and accommodation businesses and workforce in Howard, Little River, Sevier, Sharp, Izard and Fulton counties. They are utilizing research collected over the past year to provide support and resources in their regions.

They include:

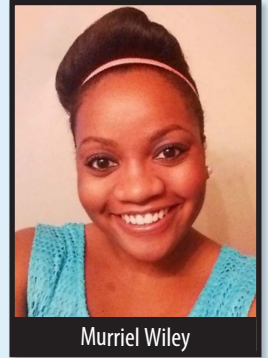
- **Brandon Mathews**, founder of BLM Strategies, Inc. and co-director of the College and University Food Bank Alliance. He is a native Arkansan and graduated from the U of A.
- **Hazelle Whited**, executive director of the Spring River Innovation Hub and the Sharp County Community Foundation. She is also a member of the Northeast Arkansas Regional Intermodal Authority, and is a team leader for the Sharp County Economic Development Research Team.



Brandon Mathews



Hazelle Whited



Murriel Wiley

- **Murriel Wiley**, former news director and morning show host of KDQN 92.1 in De Queen. She has been a member of the Create Bridges regional steering committee since 2018. She lives in Nashville, Arkansas, and graduated from the U of A.

They join Dr. Stacey McCullough and Julianne Dunn in CPED. To learn more about Create Bridges, visit www.uaex.edu/createbridges.

FCS Agents Aid UAMS with COVID-19 Testing Outreach

Extension FCS agents are using their community connections to help UAMS coordinate COVID-19 testing events throughout the state.

UAMS' mobile testing unit will travel on average three times a week from Little Rock to rural communities to provide COVID-19 testing. The mobile unit, funded with a Blue and You Foundation grant, is to meet the pandemic-related health needs in rural, underserved areas of the state.

Destinations are identified on an ongoing basis, depending on counties' need. Some of the testing

sites will be hosted at University of Arkansas System campuses. Sixty-three counties, however, do not have a U of A System campus, and this is where extension agents' local connections come into play. They will reach out to their community networks to find community partners to coordinate events and recruit volunteers. Local partners will help select and coordinate sites, find volunteers, promote the testing events locally and assist at the events. Testing events will typically take place between 10 a.m. - 2 p.m.

Extension's health leadership team is collaborating with the UAMS Office of Population Health. ■

Extension Professional Development Scholarships Announced

BL
9

The Development Office is pleased to announce the recipients of the 2020 CES Retiree Scholarship, Lynn R. Russell Endowed Award for Professional Excellence and the Mildred and Liz Childs CES Professional Development Fund. These awards are funded by endowments setup to assist Extension faculty and staff continue to advance their education and to promote professional development. The recipients will be recognized during the State Faculty Conference December 7.

CES RETIREE SCHOLARSHIP

Melanie Berman, LRSO - \$750 to work on her Project Management Profession Certification.

Elizabeth Easley, Mississippi County - \$750 to pursue her MS in Human Resource & Workforce Development at the University of Arkansas.

JoAnn Vann, Clark County - \$750 to pursue her MS in Agriculture & Extension Education at the University of Arkansas.



Melanie Berman

LYNN R. RUSSELL ENDOWED AWARD FOR PROFESSIONAL EXCELLENCE

Terrika Edwards, Pulaski County - \$500 to pursue her MS of Public Health at the University of Arkansas Medical Sciences.



Terrika Edwards

MILDRED & LIZ CHILDS CES PROFESSIONAL DEVELOPMENT FUND

Mary Beth Groce, Faulkner County - \$500 to attend the 2020 Conway Area Leadership Institute.



Mary Beth Groce

Additional information about application criteria, deadlines, etc. can be found at <https://www.uaex.edu/support-units/giving/endowments.aspx>. Gifts to support these endowments can be made at: <https://uaex.formstack.com/forms/donations>. ■

Extension Offers In-person, Online Tax School

Know a professional tax preparer, farmer, small business owner or anyone else interested in income tax preparation? You can refer them to one of our two-day Income Tax Schools.

In-person courses will be offered at the Little Rock state office on Nov. 3 - 4 and Nov. 5 - 6, but the latter course has already reached capacity.

Online courses will be offered Nov. 9 - 10 and Nov. 19 - 20. Registration is \$250 before Aug. 30. Additional information and registration information is at <https://www.uaex.edu/taxschool>.

For more information, contact Nikki Dawson or Kim Magee at (501) 671-2003.

Each class runs from 8 a.m. - 4:30 p.m. and meets the guidelines for 16 hours of continuing professional education. We are an approved IRS Continuing Education Provider. ■



INCOME TAX SCHOOL
2020 | **U of A** DIVISION OF AGRICULTURE
RESEARCH & EXTENSION
University of Arkansas System

County Budgeting and Property Tax Webinars

Extension's Community, Professional and Economic Development unit conducted a Zoom in-service webinar on the county government budgeting process on Aug. 18 and will conduct a webinar on Arkansas' property tax on Sept. 29.

The county budgeting process, which began in August, will be especially difficult this year due to the unexpected costs and difficulty in estimating 2021 revenue due to COVID-19. The Aug. 18 webinar covered the budgeting time frame, responsibilities of county officials and the Quorum Court, how we can engage in the budgeting process, and CPED resources that can assist in the budgeting process.

The property tax webinar on Sept. 29 will reveal who pays property tax and how we benefit from the use of property tax revenue by schools and local governments. CPED also will address how property taxes compare among counties and with other states and what is happening to the property tax base in Arkansas counties. We will also review resources materials on the property tax that you can use in conducting educational programs and share with the public.

For more information about these webinars, contact Wayne Miller (wmiller@uaex.edu) or Ellie Wheeler (ewheeler@uaex.edu). Sign up for these webinars at learn@uaex.edu. ■

Grants and Contracts

PROJECT TITLE (GRANTS & CONTRACTS)	AWARD AMOUNT	PI	GRANTING AGENCY
2020 Peanut Irrigation Project	3,964.00	Andy Vangilder	Arkansas Peanut Growers Association (CPPO)
2020 Gypsum Study Addition	2,300.00	Andy Vangilder	Arkansas Peanut Growers Association (CPPO)
2017 Arkansas Extension Implementation Program	189,692.00	Glenn Studebaker	USDA-NIFA
Improving Crop Residue Burning & Management Recommendations in the Arkansas Delta Region	24,659.50	Jarrod Hardke	Arkansas State University - Jonesboro
Focus on the specific requirements of an NRCS CNMP and develop an on line training course	242,303.00	Karl VanDevender	Natural Resources Conservation Service (NRCS)
Establishing the Infrastructure to Develop Prediction Tools for Diseases & Affecting Cotton to Better Inform Management Decisions (UAR)	20,000.00	Terry Spurlock	Agricultural Research Service
TOTAL AWARDS FOR JULY 2020: \$482,918.50			

Front Page News You Can Use

Looking for a news story to use in your local paper? Look no further than the front page of uaex.edu. And if you click on view all news, you'll see all of our archived news stories back to 2014.

If you want to be on the email list to receive our news stories, email Mary Hightower at mhightower@uaex.edu and Communications will add you to the distribution list. ■

COVID-19 Myth Busting
Get the Facts >

- Attend an Event
- Search our Directory
- Find Your County Agent
- Get E-News

NEWS

Moldenhauer named Interim head of rice station at Stuttgart
Dr. Karen Moldenhauer, a professor and rice breeder for the University of Arkansas System Division of Agriculture since 1982, will serve as the interim director of the Rice Research and Extension Center.
[>Learn More](#)

Agritourism: Opportunities and obstacles discussed in August 19 webinar
The National Agricultural Law Center will host a free webinar on Aug. 19 at noon EDT/11 a.m. CDT, discussing the evolution of agritourism and the subsequent legal changes.
[>Learn More](#)

Double Your Dollar program extends to Pandemic EBT recipients at northwest Arkansas farmers markets
Double Your Dollar program extends to Pandemic EBT recipients at northwest Arkansas farmers markets.
[>Learn More](#)

[View more news >](#)

Benefits Corner

BL
11



Employees enrolled in voluntary security benefits offered from LegalShield and/or ID Watchdog, may now pay these premiums via payroll deduction.

If you previously paid ID Watchdog and/or LegalShield directly and have now enrolled in paying these premiums via payroll deduction, you will need to contact ID Watchdog 866-513-1518 and/or LegalShield 870-295-0417 directly to stop your previous payment method.

To enroll:

1. Log in to Workday.
2. Click the Benefits app, then click Benefits under Change.
3. Select 'ID Theft Change' or 'Legal Insurance Change' under Benefit Event Type.
4. Enter the Effective Date.
5. Make your coverage selections, then click Submit.

Employees can access their total benefits cost in Workday with these steps:

1. Log in to Workday.
2. Click the Benefits app, then view cost under Current Cost.
3. Click the amount to view a detailed breakdown of cost.

The Arkansas Employee Assistance Program professionals have years of experience and are here to help when you're facing problems. Contact them directly for a confidential consultation.

Toll Free: 800.542.6021 / 501.686.2588 / eap-elink.uams.edu.
to make appointments via the portal. EAP also provides online counseling through telephone or video call.

Have questions? Human Resources can be reached at yourbenefits@uaex.edu. ■

Personnel Changes

Welcome aboard:

Brooke Anderson - Project/Program Manager, Ag Economics & Ag Business

Qiurong Fan - Program Associate, Entomology & Plant Pathology

Kimumekia McNeal - Fiscal Support Analyst, Business Office

James Mitchell - Assistant Professor - Livestock Marketing & Management,
Ag Economics & Ag Business

Beth Prescott - Procurement Coordinator, Business Office

Farewell to:

Derrick Collins - Fiscal Support Specialist – Crop Soil & Environmental Sciences

Allison Strickland - EFNEP Program Assistant – Extension, Pulaski County

Valens Niyigena - Program Technician, Animal Science

Jewell Miller - Program Technician, 4-H & Youth Development

Amanda Gonia - Administrative Specialist III, Horticulture

Christy Holt - Administrative Specialist I, Garland County

Crystal Ingle - Administrative Specialist II, Entomology & Plant Pathology

Elena Garcia - Professor, Horticulture, Washington County

