

BL

BLUE LETTER

March 2024

No. 3863



FROM THE DIRECTOR

Many Hands Make Light Work

I'm sure you've all heard the old saying, "Many hands make light work." If you have worked in Extension for very long, you probably feel that saying in your bones. We would get very little done without collaboration: collaboration with colleagues across the organization, with other community organizations, with local and state government, and – of course – with our many volunteers.

We got a good look at the importance of collaboration this month in 4-H with our annual 4-H Giving Day to support the Arkansas 4-H Foundation. 4-H Giving Day strategically coincides with St. Patrick's Day. (Clovers, green ... get it? It's brilliant!) 4-H Program Leader Debbie Nistler and her team – including especially John Thomas, 4-H Foundation managing director, and the 4-H Foundation board – put in a lot of work organizing and promoting Giving Day. By the time the event was over, \$40,000 had been collected to support our 4-H kids. That was a record mark for Giving Day.

That total also included \$10,000 in matching funds from our friends at Arkansas Farm Bureau. The point is that a lot of people pitch in to make Giving Day happen, and a lot of supporters contribute to the cause.

If many hands make light work, I guess the corollary is that few hands make heavy work. Some of the heaviest work in CES in recent years has been done by our District Directors, of which there have been three. Three DDs to manage the personnel needs of 75 counties, to mentor agents across all counties and program areas, to manage district budgets, and to provide input to program leaders and the director's office for strategic planning and management is very few hands, indeed. I am happy to say that will soon be changing. We are in the process of adding an associate district director in each district. There will still be plenty of work, but a few more hands will go a long way toward making the work a little lighter. ■

INSIDE SCOOP

2. Soybean Science Challenge
3. 4-H Awards Dinner
4. Sowing Seeds of Excellence
5. Bootcamp for Cattlewomen
6. Tech Corner...And much more!
7. Selling Dog Treats in Arkansas ...And much more!

ASMSA West Central Science Fair

The Soybean Science Challenge attended the ASMSA West Central Arkansas Science Fair on Feb. 22. Alice Dong won the SSC Award at the 2024 science fair and received a \$300 cash award provided by the Arkansas Soybean Promotion Board. Her teacher, Dr. Lindsey Waddell, won the Teacher Mentor Award and received \$200. Alice Dong won the SSC Award at the 2024 science



fair and received a \$300 cash award provided by the Arkansas Soybean Promotion Board at the Awards Ceremony on Feb. 23. Her teacher, Dr. Lindsey Waddell, won the Teacher Mentor Award and received \$200. ■



ASMSA-WCARSF Soybean Science Challenge Winner Alice Dong and teacher Dr. Lindsey Waddell.

Beef Quiz Bowl

4-H Teams Finish Top 3

Twenty-one 4-H and FFA teams participated in the Beef Quiz Bowl at the Pauline Whitaker Animal Science Center in Fayetteville on Feb. 23. The Beef Quiz Bowl encourages youth to demonstrate communication skills, teamwork, critical thinking, and decision-making in a double-elimination competition format. Sponsored by the Arkansas Beef Council, this activity allows students to gain further knowledge of beef cattle management, nutrition, and health with an emphasis on beef products and food safety. The questions for the contest are written

by UADA Animal Science faculty. In total, 97 youth competed, representing 11 counties across Arkansas.

This year's winning team from Washington County 4-H consists of Joshua B., Lauren H., Hannah A., Sicily B., and Rosetta A. Washington County agriculture agent Ronnie Horn was their coach. The second-place team was from Carroll County 4-H and the third-place team represented Nevada County 4-H. Congratulations to all! ■



Champion Team. Washington County 4-H. Left to Right: Mindy Sloan (Arkansas Beef Council), Ronnie Horn (Coach), Joshua B., Lauren H., Hannah A., Sicily B., Rosetta A.



Reserve Champion Team. Carroll County 4-H. Left to Right: Monty Rexwinkle (Coach), Mindy Sloan (Arkansas Beef Council), Andrew R., Duncan P., Hunter K., Kaitlyn A.

4-H Awards Dinner

The Bradley County 4-H honored its members – and longtime sponsor – at the annual Awards Dinner held Feb. 27 at Immanuel Baptist Church in Warren. Warren Bank & Trust Company has sponsored the 4-H Awards Dinner for 75 years.

It is commendable that this institution has committed to supporting our 4-H'ers for this many years. Without the support of our local communities, these types of programs would not be possible. ■



Mrs. Kelly Ashcraft, President of Warren Bank & Trust, and Benjamin G., 4-H Member of the Year



C.A. Vines Arkansas 4-H Center

Best of Biz Winner!

For the sixth straight year, the C.A. Vines Arkansas 4-H Center is a winner in the annual “Best of Biz” awards.

This year, the center earned the title of Best Team Building Center in the awards, given annually by “Arkansas Business.” The awards are based on votes from the public.

“The ExCEL leadership and team development

experience at the Vines 4-H Center has been providing premier quality training since 1986,” said J.J. Pitman, center director. “Thank you to all the clients who voted the Vines 4-H Center as the Best Teambuilding Center.”

The ExCEL program, with versions for adults and youth, uses the outdoors to present everyday challenges in new ways to help people learn how to better overcome them. Participants come away from an experience in which teamwork, communication, trust and problem-solving take on real meaning.

For more information on ExCEL, call the center at 501-821-6884 or email at excel@uada.edu.

The award winners were announced in December. The C.A. Vines 4-H Center is operated by the Arkansas 4-H Foundation to support the activities of the 4-H youth development program of the Cooperative Extension Service. ■



Participants from several businesses and organizations participate in the ExCEL Corporate Challenge at the 4-H Vines Center in Little Rock. The event included a series of team-building exercises.

Sowing Seeds of Excellence

“You made Extension and the values it has always represented come back to the forefront like they should be.”

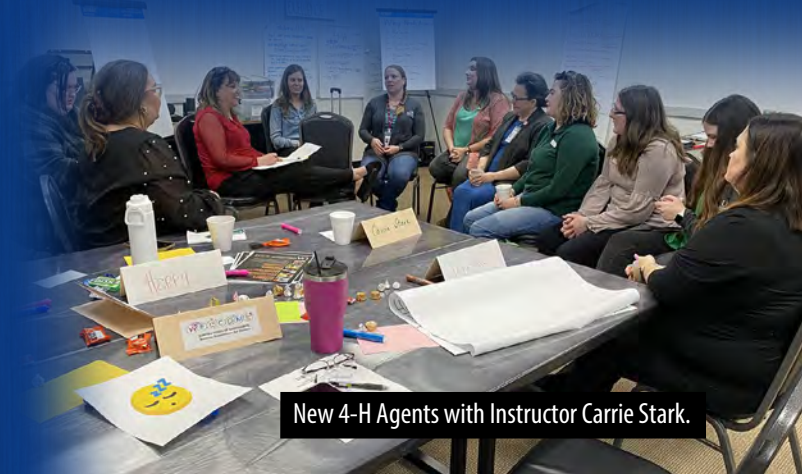
“Sometimes it always seems like it is about paperwork. You made it about people.”

“Getting to know the other agents and knowing that we are having the same struggles.”

These comments from new agents are just some of the answers to the informal question: “The very best thing for me was” about the recent Sowing Seeds of Excellence training at the 4-H Center. Agents also liked the open discussions, True Colors, the peer-to-peer and panel sessions, Dr. John Anderson’s welcome, icebreakers by Vanessa Lewis, along with interactions with each other and the wisdom reflected from the seasoned agents and educators.

The training was offered by Steve Siegelin, CPED professional development specialist, and the

CPED professional development team to about 25 new agents. New agents participated in activities designed to assist them in their respective areas. When asked what they needed, new agent answers ranged from more training on programs, and writing newspaper articles to dealing with county officials and other community leaders. These new agents provided the CPED professional development team with a good foundation for planning upcoming new agent professional development. ■



New 4-H Agents with Instructor Carrie Stark.

4-H and FFA Career Development Event



The Nevada County Extension Office in partnership with Nevada and Prescott FFA Chapters held the 3rd annual Nevada County 4-H and FFA CDE (Career Development Event) on March 1. More than 1,000 students registered from 53 schools and 11 counties for the CDE this year. Competitions included Land, Poultry, Vet Science, AG Business, AG Mechanics, Wildlife, Agronomy, Forestry and Livestock.

The CDE would not have been possible without the help of Andrew Bolton, Bryan Kutz, Allison Harman, the Arkansas Game and Fish Commission, Farm Credit, Nevada County Farm Bureau, NRCS, Nevada County Fairgrounds, Prescott School District, Nevada and Prescott FFA Chapters, and a multitude of volunteers from the Nevada County area. ■



Career Development Event attendees compete in Livestock Judging Competition.



4-H and FFA youth participate in the Land Judging Competition.



4-H Family Night

“Celebrating Arkansas County 4-H!” was the theme of 4-H Family Night at Phillips Community College in DeWitt. 4-H Senior Council President Autumn D. welcomed 90 attendees, and Judge Eddie B. made opening remarks followed by a delicious meal sponsored by the Arkansas County 4-H Foundation and prepared by Summit Utilities.

State 4-H Secretary Connor H. shared his 4-H experience. Alta Lockley, CEA-4-H/Family and Consumer Sciences, and Warren Jennings Jr., 4-H Foundation president, recognized 10 youth who reported their project work by turning in 4-H record books.



Connor H. (top right), State 4-H Secretary, shares his 4-H experience with the crowd.

Phil Horton, CEA-Agriculture, recognized youth for 4-H Poultry Chain, Pumpkin and Watermelon Contest, and Shooting Sports. Grant Beckwith, CEA-Staff Chair and Jennings recognized:

- Erin H., Outstanding 4-H Leader
- Clover Kids 4-H Club, County Champion Club
- Connor H., Sr. County Champion
- Teegan H., Jr. County Champion



Connor H., Sr. County Champion and Teegan H., Jr. County Champion

This event promotes 4-H, showcases the 4-H members' project work, and encourages all youth to become more involved in county, district and national 4-H events. ■

Bootcamp for Cattlewomen

The Cleburne and Independence Counties Bootcamp for Cattlewomen was conducted Feb. 22-24. It was a program designed to give women an opportunity to learn from other women within the cattle industry. The camp took place at the Cow Palace at Chimney Rock Cattle Company in Concord and at the Arkansas Agriculture Experiment Station, Livestock and Forestry Station in Batesville. Thirty-five women from seven counties and three states attended the bootcamp. Lt. Gov. Leslie Rutledge gave the keynote speech. The bootcamp combined traditional educational methods as well as hands-on exercises.

The camp covered a wide variety of topics within the cattle industry including



Bootcamp participants with Lieutenant Governor Leslie Rutledge.

farm business management, bull selection and calving seasons, forage management, farm estate planning, sprayer calibration, how to pull hay and soil samples, tractor safety, animal handling, how to administer injections, how to back a trailer and much more. The bootcamp wrapped up with a tour and graduation ceremony. ■



Bootcamp participant pulling hay sample.



Outlook Required for Checking Email

You can no longer use your phone's default mail app or a third-party email app like Apple mail, Thunderbird, etc., to check your UADA email. To protect institutional and personal data, Microsoft Outlook will be required to access UADA email and calendar.

Resources:

- Outlook application – download at owa.uada.edu.
- Outlook mobile – download from the Apple App Store or Google Play Store.
- Outlook online – available at owa.uada.edu.

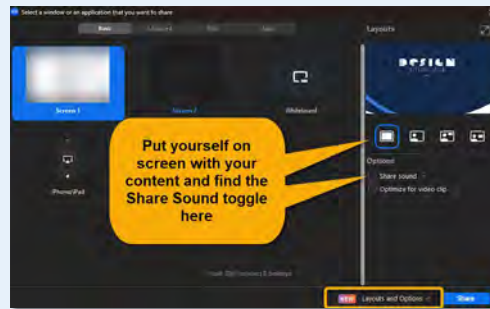
*Log in with your @UADA.edu email address and password. If prompted, select Office 365.

This change is being implemented to increase the security of institutional and personal data for our employees. With the rise of UADA email on personal devices, security measures provided by Outlook are necessary. These include, but are not limited to, the enforcement of multi-factor authentication, ability to secure email data if the device is lost or stolen, and email encryption.

In addition to increased security, Outlook allows you to manage both your UADA email and calendar from one app and is completely integrated with the Office 365

suite, including OneDrive and Teams (see [Outlook tips and tricks you should know](#)).

If you have questions, need help [setting up Outlook](#), or experience any login issues, please contact IT Support at <https://support.uada.edu>.



Zoom Pro Tip – New Screen Sharing Options

Sharing your screen looks a little different lately. That's because Zoom has rolled out some new layouts when sharing your screen. You can still share your screen the same way you always have, or you can add yourself to the presentation using these new options. You'll also find the Share Sound toggle in its new location here. For [more information on these new layouts](#) or on [sharing your screen](#) in general, head over to the Zoom Support site.

Hacks from Hump Day



- [Freeze Panes in Excel](#)
- [PowerPoint Pre-session Slides](#)
- [Font Colors](#)
- [PUBS Ordering System](#) ■

2024 TECH TUESDAY WEBINARS

Have you missed any past Tech Tuesday webinars or want to join future webinars? Check out the recordings and other resources on the [Tech Tuesday Blog page](#). Did you miss February's [Tips and Resources for Better Design Tech Tuesday](#)? Check out the recording and resources.



Selling Dog Treats in Arkansas

Fans of making and selling homemade dog treats in Arkansas often reach out to the Public Policy Center for regulatory information. Our response often comes as a surprise.

The Food Freedom Act in Arkansas, often called a cottage food law, does NOT apply to homemade canine treats or food. The law guides food intended for human consumption, which until the passage of a previous cottage food law in Arkansas meant every food item for sale had to be made in a health department-inspected kitchen.



So What About Dog Treats Then?

If you want to sell homemade dog treats or food in Arkansas, contact the Arkansas Department of Agriculture - Feed Division for an application for a feed facility license. The form covers everything from livestock feed to pet food and specialty pet food. The division's website is www.agriculture.arkansas.gov/plant-industries/feed-and-fertilizer-section/feed-2/.

Read the Arkansas Feed Law of 1997 for more info at [www.agriculture.arkansas.gov/wp-content/uploads/2020/05/Feed Law and Regulations.pdf](http://www.agriculture.arkansas.gov/wp-content/uploads/2020/05/Feed%20Law%20and%20Regulations.pdf). ■

Economic Development Administration Website Offers New Resources

The Center for Rural Resilience and Workforce Development, part of the Community, Professional, and Economic Development Unit, has launched a new website showcasing its EDA University Center (UC) program and resources. Go to <https://uaex.uada.edu/EDAUC> to learn more. If you are working with the any of the eight Economic and Planning Development Districts, operating in the workforce development space, and/or working with rural, Hispanic, or Marshallese communities, we should talk! Contact Brandon L. Mathews at bmathews@uada.edu or 501-671-2085 (text or call). ■



Five Regional Science Fairs

Bennet Chen won the SR Division Soybean Science Challenge \$300 cash award at the Central Arkansas Regional Science and Engineering Fair on March 1. His teacher, Tarsha Parker, won the \$200 Teacher Mentor Award. The \$200 JR Division Award went to Suleyman Acikgoz, and his teacher, Sevcan Acikgoz, received the \$100 JR Division Teacher Mentor Award.

Katylyn Reupta won the SR Soybean Science Challenge \$300 cash award at the Ouachita Mountains Regional Science and Engineering Fair on March 1. Her teacher, Sheila Bentley, won the \$200 Teacher-Mentor Award. Zane Morris won the JR SSC \$200 Award and his teacher; Rita Martin won the JR SSC \$100 teacher award.

Sydney Fuller won the SR Soybean Science Challenge \$300 cash award at the Southeast AR Regional Science Fair on March 7. Her teacher, Katherin Yancy, won the \$200 Teacher-Mentor Award.

Sydney Wolf and Anna Leslie won the \$300 Soybean Science Challenge cash award at the Northeast Arkansas Regional Science and Engineering Fair on March 8. Their



JR SSC Winner Me'Shell Hinton right, with teacher Jennifer Langston.

teacher, Allyson Goodin, received the \$200 Teacher Mentor Award. Me'Shelle Hinson won the \$200 JR SSC Award, and her teacher, Jennifer Langston, received the \$100 JR Teacher Mentor Award.

DuYen Du won the \$300 Soybean Science Challenge cash award at the Northwest AR Regional Science and Engineering Fair on March 8. Her teacher, Patrick Briney, received the \$200 Teacher Mentor Award. The \$200 JR SSC award went to Hadley Panek, and her teacher, Erin Wragg, received the \$100 JR Teacher-Mentor Award.

The Soybean Science Challenge is a farmer-funded, statewide, high school education program that seeks to increase student knowledge about the value of Arkansas soybeans to the Arkansas economy, to the labor force, and ultimately to feed and fuel the world.

The Soybean Science Challenge is a partnership between the Arkansas Soybean Promotion Board and the Cooperative Extension Service.

For more information, contact Dr. Julie Robinson, jrobinson@uada.edu, Diedre Young dyoung@uada.edu, or Keith Harris, kharris@uada.edu. ■



Central AR Regional Science and Engineering Fair Soybean Science Challenge SR Winner Bennet Chen and teacher Tarsha Parker on the left, and JR SSC Winner Suleyman Acikgoz and teacher Sevcan Acikgoz on right.

Grants & Contracts

PROJECT TITLE	AWARD AMOUNT	PI	GRANTING AGENCY
CTAA NCMM Ready to Launch Pilot Grant - Delta Rides, Phillips County	75,000	Bryan Mader	Community Transportation Association of America (CTAA)
Loveland Products Dyna-Gro Rice Breeding	103,680	Jarrod Hardke	Nutrien Ag Solutions
Oral Health Education	30,000	Nina Roofe	The Delta Dental of Arkansas Foundation, Inc.
TOTAL AWARDS FOR FEBRUARY 2024: \$208,680			

Personnel Changes



Welcome Aboard:

Brent Clark – County Extension Agent - Agriculture, Sebastian County
LaTaaka Harvey – County Extension Agent - Family & Consumer Science, Calhoun County
Kristie Head – EFNEP Program Assistant - Family & Consumer Science, Little Rock
Christie Wagley – County Extension Agent - Family & Consumer Science/4-H, Poinsett County
Teresa Henson – Instructor - Family & Consumer Science, Little Rock
Bruna Ronning – Program Technician - Plant Pathology, Rice Research & Extension Center/Stuttgart

Farewell to:

Crystal D. Rushing – County Extension Agent - Family & Consumer Science, Garland County
Thomas R. Butts – Associate Professor - Extension Weed Specialist, Lonoke Agricultural Center
Eric Sims – Navigator Project Specialist - Agricultural Economics and Agribusiness, Little Rock
Madelyn Bokker – Administrative Specialist III, Prairie County
Katrina Owens – County Extension Agent - Agriculture, Crittenden County
Melanie K. Rogers – 4-H Program Assistant, Grant County
Ashton Jordan – 4-H Program Assistant, Perry County