

BL

BLUE LETTER

July 2021

No. 3831



FROM THE DIRECTOR

Focused and Steadfast in Purpose

What a change a month can make. Sadly, due to rising number of COVID cases in our state, some of our events have been canceled and others will soon return to virtual formats. At the time I am writing this, Arkansas has the lowest vaccination rate in the U.S., and not surprisingly, has among the highest numbers of daily new cases. We have a few positive cases within our Division ranks; it is true that both the vaccinated and unvaccinated can test positive. However, the data is clear on the severity of risk of serious illness, the need to quarantine for exposure, and the infection rate of the vaccinated versus the non-vaccinated. I believe the entire Division needs to fully get behind our current vaccination efforts in the state. I challenge all Extension employees to include links to our COVID pages in your upcoming events, newsletters, posts and other communications. It is OK to include information locally on where to get a vaccination. For more information, contact Dr. Bryan Mader (bmader@uada.edu) for help in promoting the COVID vaccine at your upcoming events. For COVID-related questions, please email covid@uada.edu.

The Division continues to move forward even as these new challenges have arisen. We are slated to advertise/

interview for several new positions in support units, faculty and staff. Matt Brown and our business office is busily trying to close out our first fiscal year in Workday. We have hired Kevin Lawson to fill the Ozark District director position, vacated by the retirement of Sharon Reynolds. Please join me in wishing Sharon all the best and welcoming Kevin to the state office and his new role.

Hopefully, everyone took a minute to approve salary adjustments in Workday. I see this year's salary increase as an investment in the future of the Cooperative Extension Service. I cannot take much credit for this, but I am committed to making us more competitive in the job market for all positions in our organization, and this was a start.

Once again during this time, I ask employees to be patient, resourceful, and to take the initiative to keep your various activities and programs going wherever you can. Use common sense when planning events and include social distancing, hand sanitizer and no-contact meals. If an event cannot be held safely, consider changing venues or going virtual. My hope is that this will be a hiccup and cases will tip back down soon. Stay tuned. ■

INSIDE SCOOP

2. Farm to Table Workshop
3. CREATE BRIDGES
Gets National Recognition
4. Northeast Rice Research & Extension Center Update
5. First iLead Class Announced
6. Animal Science Faculty & Students on the Move
7. Tech Corner
8. Cross County 4-H Members Stay Active and much more!

U of A
DIVISION OF AGRICULTURE
RESEARCH & EXTENSION
University of Arkansas System

ENPL Graduate Students Host Booth at Fayetteville Farmers' Market

BL
2

The Entomology and Plant Pathology graduate students are hosting a booth at the local Fayetteville Farmers Market this summer. Each week the students switch off running the outreach and diagnostic booth and will continue to do so until Aug 14.

For more information, follow the Department of Entomology and Plant Pathology on twitter at @ArkansasEPP or visit the website enpl@uark.edu. ■

The Entomology booth offers an up-close look at insects. Insect collection boxes help visitors identify pests and beneficial insects, as well as species that range from beautiful to strange. The Plant Pathology booth offers onsite plant disease diagnoses for anyone who brings plant samples or pictures. They show both plant diseases and pathogens using real life samples and invite everyone to play games to learning about plant pathology.



(L to R): Dylan Cleary and Hillary Fischer representing The University of Arkansas Isely-Baerg Entomology Club at the Fayetteville Farmer's Market.



(L to R): Professor Dr. Ioannis Tzanetakis, department head Dr. Ken Korth, and graduate students Andrea Sierra Mejia and Juanita Gil Bedoya represent the Plant Pathology Graduate Student Association at the Fayetteville Farmer's Market.

Farm to Table Workshop

To celebrate Arkansas Blackberry Month, Independence County 4-H members toured a local blackberry farm where they picked a gallon of berries and learned about the Division of Agriculture's involvement in blackberry production. They later used some of the berries to make homemade blackberry jelly. Youth were taught how to safely water bath fruit jelly. Some used innovative technology to make their batch of jelly using the automatic jam and jelly maker while others used the traditional method of making jelly on the stovetop. Both groups did a great job and enjoyed fresh homemade jelly. ■



Independence Co. blackberry farm owner, Charlie Wade, talks with 4-H members and FCS Agent, Julian Carpenter, about the different varieties of berries on his farm.



Independence Co. 4-H members along with 4-H Program Assistant, Linda Latus, pick blackberries during the Farm to Table Workshop.

CREATE BRIDGES Gets National Recognition

CREATE BRIDGES was the national award runner-up in innovation and creativity by the National Association of Community Development Extension Professionals. The award recognizes projects that creatively address a community or implementation issue in a novel manner that demonstrates improvement in program results.

CREATE BRIDGES is an economic development pilot that launched in 2018. CREATE BRIDGES stands for Celebrating REtail, Accommodations, Tourism, and Entertainment by Building Rural Innovations and Developing Growth Economies. Two Arkansas regions are involved: 3C's (Howard, Little River and Sevier counties), and Ozark Foothills (Fulton, Izard and Sharp counties).



Brandon Mathews (L) and Hazelle Whited (R) presenting to the Ozark Foothills Regional Steering Committee in Salem, AR.



Create Bridges is a partnership among Southern Regional Development Center, the University of Kentucky Community and Economic Development Initiative of Kentucky, Oklahoma State University Cooperative Extension Service, and UADA Community, Professional, and Economic Development office. The second phase of Create Bridges launched in 2020 and includes the University of Illinois, New Mexico State University, and North Carolina State University.

Dr. Stacey McCullough and Julianne Dunn are the Arkansas state leads and Brandon Mathews (Ozark Foothills), Hazelle Whited (Ozark Foothills), and Muriel Wiley (3C's) are regional program coordinators. ■

Be Cool, Stay Cool, Fan Drive

Sevier County 4-H member Ethan W., 17, recently started the "Be Cool, Stay Cool Fan Drive." This is a project

that Ethan has taken on himself, with help from the Sevier County Extension Office. Ethan reached out to Dr. Randy and Mrs. Angie Walker to reach more of the senior community. Ethan raised \$905, and Dr. Walker matched it, for a total of \$1,810 for the fan drive. In the end, they were able to purchase 94 fans for Sevier County residents. ■



Presenting check for fan drive. (L to R): Sevier Co. Ag Agent Rex Herring, Angie Walker, 4-Her Ethan W., Sevier Co. 4-H PA Kim Frachiseur, Sevier Co. FCS Agent Janet Cantrell.

Northeast Rice Research & Extension Center Update

The Northeast Rice Research and Extension Center (NERREC) is gearing up for the next phase of construction. Greg Simpson, the farm manager, and Chris Loewer, the research technician, have been working to plant and maintain 170 acres of rice and soybean for several researchers from the Division as well as the USDA-ARS. This will be the first year of full crop production at the NERREC. The machinery shop, scheduled for completion by the end of the year, will be a great asset to the farm and will provide a large, covered space for equip-

ment as well as an indoor space for weather sensitive materials and supplies.

Ashlyn Ussery, who has a master's degree in agricultural communications from the University of Arkansas, has been hired as the center's Agriculture and Natural Resources educator. Ashlyn will work closely with the other research stations as well as extension centers in the Delta region to establish an interactive and engaging curriculum for K-12 youth and 4-H students to learn about Arkansas rice. ■



Ashlyn Ussery,
ANR Educator



HorizonAg CLL16 rice on the NERREC farm.



Machinery shop foundation has been poured and now waiting on the steel structure.

Myers-Briggs Type Indicator® Certified Facilitator

The Myers-Briggs Type Indicator® (MBTI®) assessment is one of the world's most popular personality tools. The Division of Agriculture now has a certified MBTI® facilitator in the Community, Professional, and Economic Development department.

MBTI® describes itself as a shorthand way of telling people about their four mental functions and which ones they prefer to use. MBTI® type dynamics look at how a person prefers to interact with the world



around them, how a person prefers to take in information, how a person prefers to make decisions, and how a person prefers things to be structured.

The MBTI® is used by many community and leadership groups to help teams and groups work together. For more information about MBTI®, contact Julie Robinson, jrobinson@uada.edu. ■

Animal Science Receives Arkansas Beef Council Funding

Several Animal Science faculty have received funding from the Arkansas Beef Council for the following research proposals:

- **Determining Arkansas consumer preferences for locally produced beef and the implications for certified beef programs and in-state processing capacity** – Drs. James Mitchell (Department of Ag Economics & Agribusiness) and Kelly Vierck.
- **Evaluation of freezer type and storage duration on beef quality traits** – Dr. Kelly Vierck.
- **Utilizing carcass ultrasound and genomic testing to predict quality traits in direct marketed beef from farm to consumer (year 2)** – Dr. Charles Looney.
- **Evaluating the safety and quality of sous-vide beef products** – Dr. Kelly Vierck.
- **Impact of feeding duration on carcass quality and consumer acceptance of locally grown beef** – Dr. Beth Kegley. ■

First iLead Class Announced



Internal
Leadership
Education &
Development

The first cohort of iLead, the internal Leadership Education and Development program, has been selected. The class represents the breadth of Division of Agriculture personnel. The first session was held July 16 via Zoom.

“We had a really strong pool of applicants, and the selection committee had quite the challenge,” said Julie Robinson, associate professor in community, professional and economic development. “Their work paid off in a class that reflects so many facets of what we do in the Division of Agriculture with class members from research, extension and support units.”

The inaugural cohort is:

- **Jamie Baum**, associate professor of nutrition.
- **Rachel Bearden**, Hot Spring Co. extension staff chair.
- **Leigh Ann Bullington**, Woodruff Co. extension staff chair.
- **Amy Cole**, extension digital media program manager.
- **Sarah David**, extension program associate, SNAP-ED.
- **Cosmo Denger**, IT – agricultural experiment station.
- **Eric De Vries**, 4-H SEEK coordinator.
- **Kristen Gibson**, associate professor-food safety and microbiology.
- **Fiona Goggin**, professor of entomology.
- **Mary Beth Groce**, Faulkner Co. extension agent-Family and Consumer Science.
- **Kristin Netterstrom Higgins**, extension program associate, Public Policy Center.
- **Chelsey Kimbrough**, assistant professor, extension specialist in youth livestock and small ruminant.
- **Keith Perkins**, Lonoke County extension staff chair.
- **Chris Meux**, graphic designer, communications.
- **Laura Anne Warren**, Pulaski County extension agent-family and consumer sciences.

The yearlong program is open to Division of Agriculture personnel with five or more years in the organization and encourages participation by faculty, county agents, program associates and non-classified staff. ■

Presents at the June National AG in the Classroom Convention

Soybean Science Challenge Coordinator Diedre Young presented a one-hour workshop titled 'Soybeans are a touch of classroom' on June 30 at the National AG in the Classroom Convention. The convention was held at the Iowa Convention Center in Des Moines. Young's workshop featured her Next Generation Science lesson involving researching the different sides of dicamba.

This lesson involved teachers participating in a mock town hall meeting on the current dicamba debate.

Young also hosted a Soybean Science Challenge booth where she interacted with teachers and agriculture organizations from the U.S., America Samoa and Puerto Rico. She encouraged them to use soybeans in classroom research by using the free resources available on Extensions 'soywhatsup' website.

The Soybean Science Challenge is a farmer-funded, statewide, junior high and high school education program that seeks to increase student knowledge about the value of Arkansas soybeans to the Arkansas economy, to the labor force, and ultimately to feed and fuel the world.

The Soybean Science Challenge is a partnership between the Arkansas Soybean Promotion Board and the Cooperative Extension Service. ■



Soybean Science Challenge Coordinator Diedre Young visits with teachers at the National AG in the Classroom Convention.

Animal Science Faculty and Students are on the Move

Summer is a time when Animal Science faculty and students travel to scientific meetings to network with other research collaborators and to present research. Faculty and students plan to participate in the American Society of Animal Science meetings in Louisville, Kentucky, and the Reciprocal Meat Conference in Reno, Nevada this summer. Graduate students will present their thesis or dissertation data in an oral or poster format, and some students will compete in speaking contests.

Faculty, staff and students also will team up with the Arkansas Cattlemen's Association to participate in the National Cattlemen's Beef Association (NCBA) meetings in Nashville in mid-August. Emily Efird, a senior studying animal science and agricultural business, was selected to intern at the NCBA's Convention and Trade Show at the Nashville meeting. ■



Avoid Computer Down Time

Check your Protection Now

Have you uninstalled the security software, Symantec Endpoint and activated Windows Defender from your CES computer(s)?

- ☐ Yes – skip to the next article.
- ☐ No or don't know – contact IT Support today.

Short URL Roundup!

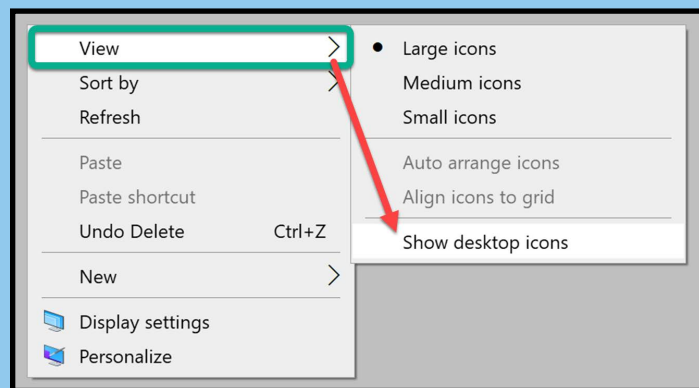
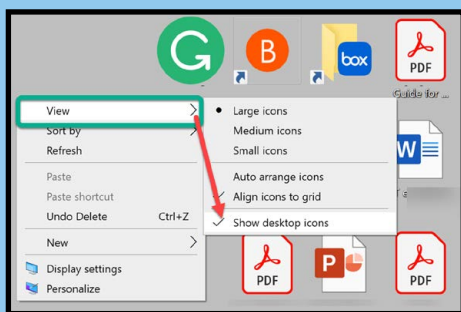
Did you know we have many short URLs that help guide people to our website(s) using an easy-to-read format?

Visit our site at <https://employees.uada.edu/websitehelp> and look under the Short URL tab to read each list.

Zoom Pro Tip Hide Busy Desktops Before Sharing Screen

Temporarily “hide” the documents stored on your desktop before sharing your screen/desktop in a Zoom meeting. How?

1. Right click on your desktop.
2. Select “View”.
3. Uncheck “Show desktop icons”.



“Unhide” the documents after the meeting.

1. Right click on your desktop.
2. Select “View”.
3. Check “Show desktop icons”.

Pro Tip for Creating Beautiful AND Accessible Documents!

Need to make a flier, postcard, or newsletter? Don't use Canva! It is not ideal for creating longer-form documents. Why? Even if you download the document as a PDF, it does not meet the minimal accessibility requirements. The best tool for document creation is MS Word because it offers the ability to set heading tags, add alt text, and update the meta title. MS Word also offers plenty of beautiful templates to choose from under the File tab.

Need social media graphics? Canva is fine to use for those with one caveat; you are responsible for adding any text shown in the graphic either in alt-text or in the caption of your social media post and ideally, describe anything that is happening in the graphic itself.

Need help? Reach out to Amy Cole or Kristena Merritt. ■

2021 TECH TUESDAYS WEBINARS

Join us for the August 10 Tech Tuesday, “Plugged In: Podcasting Success”. Register [here](#).

Did you miss the Tech Tuesday “UADA Software” webinar? Check out the blog post [here](#).



Cross County 4-H Members Stay Active



BL
8

Cross County 4-H juniors and seniors Kayli S., Brittany W., and Jodi W. — aka “The Fruities” — were elevated to stardom at Wynne Intermediate School’s summer enrichment program as they led students in moves from Yoga for Kids and fun 4-H interactive songs. The programs for over 100 students were funded by a Healthy Habits 4-H

grant and SNAP-Ed. Students loved learning from the curriculum Kids in the Kitchen: the basics of cooking, nutrition, food safety, avoiding sugary drinks, and the importance of healthy snacks.

Participants learned to make healthy snacks, including fruit and cheese skewers, Ants on a Log, and Mouse Tail Snacks. They also learned how to measure, use knives safely, and cut a fresh pineapple. Surveys indicated the students learned to pay attention to physical activity levels, follow a recipe, eat more servings of fruit and consume fewer sugary drinks. ■

Students were moving and groovin’ with moves from Yoga for Kids.



Cool moves by “The Fruities” entertained students as they learned about healthy snacks.



Camp Gives Youth a Glimpse into Veterinary Science

For some skills, there’s just no substitution for learning by doing - and that’s exactly what 4-H Veterinary Science Camp offered. Nearly 100 youth ages 11-19 learned more about veterinary medicine as they worked with horses, cattle and chickens at three one-day camps offered around the state this summer. The camp was an outreach of the Arkansas 4-H Veterinary Science program, part of the University of Arkansas System Division of Agriculture.

Dr. Heidi Ward, associate professor and veterinarian with the Division, coordinated the program and invited industry professionals to share their experiences. In years past, the camp has been offered as a three-day event at the Arkansas 4-H Center, drawing youth from all over the state. Last year’s camp was held virtually due to COVID-19 restrictions. This year, the camp was limited to 30 students, but the camp was offered at three sites — at the Pauline Whitaker Animal Science Center in Fayetteville on June 24, at the Arkansas State University Show Barn

in Jonesboro on June 25 and at the C.A. Vines Center in Little Rock on June 26.

While some of the camp attendees were new to animal science, most had 4-H projects in beef, horse, poultry or another animal science, and many of them care for animals on their family’s farms. For them, the camp offered the chance to talk with practicing veterinarians about their careers. To read more, go to <https://bit.ly/3dFlmPT>. ■



Dr. Heidi Ward, Extension veterinarian and associate professor, teaches 4-H youth about chicken anatomy during 4-H Vet Science Camp.

AG EXPLORE: Ag Career Bootcamp



Prairie and White County Cooperative Extension Service agents Amy Tallent and Jan Yingling hosted an “Ag Explore: Ag Career Bootcamp” educational program in June. Many youth have a narrow view of the careers available in agriculture. This program was created to showcase the diverse career opportunities in agriculture in Arkansas. The students learned through three days of farm tours.



Jason Davis (U of A Instructor) teaches youth how to fly drones at the UAPB Farm in Lonoke.

The Horticulture Day included three tour stops where the participants learned about commercial horticulture production and farm-to-table marketing. The Row Crop day featured corn, soybean and rice producers along

with a stop at the University of Arkansas at Pine Bluff research farm in Lonoke. The participants used drone technology with Jason Davis, equipment simulators with Farm Bureau, and virtual reality with Greenway.

The Livestock Day was packed with hands-on learning opportunities at several cattle farms, an artificial insemination school, and a lunch stop at a goat and sheep auction. The kids attended a mock auction and were able to bid on animals! Special thanks to all our co-workers, sponsors, and tour speakers that helped to make the event a success! We will see you all again next year! ■



Neal Davis (Hilltop Acres Goat & Sheep Auction) explaining the auction process and the goat/sheep market to attendees.

Learn More About Your County Government

Registration is open for the 2021 Local Government CPED Training Series “Working with Your County Government in Addressing Critical Issues.” There are six one-hour Zoom sessions in the series to learn more about the responsibilities and operations of county governments, critical issues they face, and ways to enhance our working relationships with county governments.

Register for this County Government training on the Learn website: <https://learn.uada.edu/course/view.php?id=1854>. Please feel free to attend all or just the sessions that are of most interest to you. Those who attend all six will receive an additional certificate! After attending each

session, you will have a different take-home that you can immediately use in your work. ■

Local Government CPED Inservice Series

with Dr. Wayne Miller, Kristin Higgins, Ellie Wheeler

Register now!

One-hour sessions
9-10 a.m.

July 8 Responsibilities of County Governments	Aug. 12 Developing Effective Working Relationships with County Officials	Sept. 9 Effect of the COVID- 19 Pandemic & Other Critical Issues Facing County Governments
Oct. 14 Providing Services in the Context of Fiscal Constraints	Nov. 11 Inside/Out - County Jails as Community Development Partners	Dec. 9 Developing Local Ballot Issue Fact Sheets

Clover Bud Camp



Cross County Creative Clover buds participated in a two-day camp. The youth learned about snakes and other animals at the Crowley's Ridge Nature Center in Jonesboro. They also learned about fire safety, created crafts, and made Ants on Log snacks with Millie Collins, the FCS agent at Village Creek State Park. ■



Clover Buds kids attend two day camp and learn new skills.

BL
10

Grants and Contracts

PROJECT TITLE	AWARD AMOUNT	PI	GRANTING AGENCY
NPB Seasonal Technician Position	32,518	Andy Martin Vangilder	Arkansas Peanut Growers Association
NPB Education Use Of Surge Valves in Peanut Production	3,000	Andy Martin Vangilder	Arkansas Peanut Growers Association
NPB Peanut Variety Testing Trials	12,500	Andy Martin Vangilder	Arkansas Peanut Growers Association
NPB Studies on the Effects of Apogee Plant Growth Regulator on Peanut Yields, Quality, and Harvest Efficiency	1,000	Andy Martin Vangilder	Arkansas Peanut Growers Association
NPB Study of the Effects of Plant Population of Peanuts on Yield	550	Andy Martin Vangilder	Arkansas Peanut Growers Association
EXCITE: Extension Collaborative on Immunization, Teaching & Engagement	24,178	Bryan Mader	Extension Foundation
NPB Optimizing Fertilizer Management for Cotton in Rotation with Peanut	20,004	Chuck Wilson	Arkansas Peanut Growers Association
Youth Agriculture for Residents Demonstration (YARD)	1,000	Debbie DeRossitte	Arkansas Farm Bureau & Federation
NPB Devopment of Integrated Management Strategies for Insects in Peanuts	5,742	Glenn E. Studebaker	Arkansas Peanut Growers Association
SO 137 Small Plot Trecepta Evaluations for Yield and Efficacy	11,970	Gus M Lorenz	Monsanto Company
SO 138 Cotton ThryvOn-B3XF Stewarded PCM4	10,640	Gus M Lorenz	Monsanto Company
Professional Services Contract Related to Distribution of Information	4,000	Leo Espinoza	Nax Solutions
Growing Computer Science Pathways	10,000	Lori Canada	National 4-H Council
4-H Tech Changemakers 3.0	155,000	Lori Canada	National 4-H Council
Southern Risk Management Education Center	1,289,056.73	Ron L Rainey	National Institute of Food & Agriculture (NIFA)
Divergent Selection for Water Efficiency in Broilers	328,499.50	Sara Katherine Orlowski	Cobb-Vantress Inc.
2021 Margaret A. Cargill Philanthropies Counselor & Access to Maximize Participation (CAMP) Access	27,500	Shannon Caldwell	National 4-H Council
2021 Margaret A. Cargill Philanthropies Counselor & Access to Maximize Participation (CAMP II) Access	6,000	Shannon Caldwell	National 4-H Council
SO 126 PowerMax tankmix with Enlist/Bareground/Grass Efficacy	7,938	Thomas R. Butts	Monsanto Company
SO 131 High Load Warrant/XF Soybean/POST/Phyto & Efficacy	10,290	Thomas R. Butts	Monsanto Company
USDA ARS/58-3091-1-015 Optimization & Eval of Aerial App Tech & Methods for Herbicide App	60,000	Thomas R. Butts	Agricultural Research Service (USDA ARS)
SO 134 Evaluate Residual Weed Control of Pre-emerge Residual Herbicides with and without XtendiMax Herbicide	8,820	Tom Barber	Monsanto Company
SO 136 Evaluate Multiple Herbicide Programs to Provide recommendations XtendFlex Soybean Management	8,085	Tom Barber	Monsanto Company
NPB Evaluating Herbicide Programs for Effective Weed Control in Peanut	14,000	Tom Barber	Arkansas Peanut Growers Association
Evaluate Weed Efficacy on GLIXTP Cotton	22,000	Tom Barber	BASF Corporation
NPB Integrated Management of Peanut Leaf Spot Diseases in Arkansas	10,000	Travis Faske	Arkansas Peanut Growers Association
TOTAL AWARDS FOR JUNE 2021: \$2,084,291			

Horn Fly Demos

Dr. Kelly Loftin, Livestock Entomologist, and county agriculture extension agents assessed different cattle groups at the University of Arkansas Southwest Research and Extension Center earlier this summer. They took part in a horn fly demonstration by applying a variety of fly controls to untreated cow groups. Some participants will return weekly to evaluate the efficacy of the various treatments applied to the cattle. ■



Dr. Kelly Loftin (R), Livestock Entomologist, and county agriculture extension agents assess different cattle groups with horn fly demos.



Tomato plants that sold during the Annual Tomato Plant Sale with the Plant Pathology Graduate Student Association.

Tomato Plant Sale

The Plant Pathology Graduate Student Association from the Department of Entomology and Plant Pathology hosted their annual tomato plant sale earlier this year in May. It was a huge success and they were able to sell a variety of plants including different kinds of tomatoes, peppers, basil, cilantro and chives. They were able to follow COVID-19 protocols while simultaneously providing an opportunity to let the community reconnect with plants and other individuals safely. After the sale they donated around three hundred and seventy-five plants to Tri Cycle Farms, a local and sustainable urban farm. ■

Front Page News You Can Use

Looking for a news story to use in your local paper? Look no further than the front page of uada.edu. And if you click on view all news, you'll see all of our archived news stories back to 2014.

If you want to be on the email list to receive our news stories, email Mary Hightower at mhightower@uada.edu and Communications will add you to the distribution list. ■

COVID-19 Myth Busting

Get the Facts >



Attend an Event



Search our Directory



Find Your County Agent



Get E-News

NEWS

Moldenhauer named interim head of rice station at Stuttgart

Dr. Karen Moldenhauer, a professor and rice breeder for the University of Arkansas System Division of Agriculture since 1982, will serve as the interim director of the Rice Research and Extension Center.

>Learn More

Agritourism: Opportunities and obstacles discussed in August 19 webinar

The National Agricultural Law Center will host a free webinar on Aug. 19 at noon EDT/11 a.m. CDT, discussing the evolution of agritourism and the subsequent legal changes.

>Learn More

Double Your Dollar program extends to Pandemic EBT recipients at northwest Arkansas farmers markets

Double Your Dollar program extends to Pandemic EBT recipients at northwest Arkansas farmers markets

>Learn More

View more news >

Benefits Corner

BL
12

Retirement Benefit Options

As part of rewarding your dedication and service, you may be eligible to continue coverage under certain University benefit plans when you retire. You are eligible for retiree benefits if, when you retire, you meet the requirements of the 10-70-10 Rule or the 5-65-5 Rule. As a retiree, you pay 100% of the retiree benefit plan premium rate. If you are a Medicare-eligible retiree, you and your Medicare-eligible spouse must enroll in Medicare Parts A and B to participate in the University of Arkansas UnitedHealthcare Medicare Advantage Plan. It can take up to three months to complete Medicare enrollment. To initiate Medicare enrollment, contact the Social Security Administration three months in advance of your planned retirement date.

In the event you would like Medicare counseling, The Senior Health Insurance Information Program (SHIIP) is a division of the Arkansas Insurance Department. It provides free, one-on-one counseling, education and

information about Medicare. Call 800-224-6330 or 501-371-2782 for additional information.

Dental coverage is available with Arkansas Blue Cross Blue Shield if you meet the eligibility rule requirements. Information regarding the 10-70-10 Rule or the 5-65-5 Rule requirements are located at: <https://benefits.uasys.edu/health-wellness/retiree-benefit-options/>.

Contact your benefits team at least three months before your planned retirement date regarding your eligibility and options by emailing yourbenefits@uada.edu. ■



Personnel Changes

Welcome Aboard:

Tammy Haney Administrative Specialist I, Arkansas County
Wanda (June) Moody Administrative Specialist II, Miller County
Grant Bennett County Ext. Agent - Agriculture, Crittenden County
Dixie Miller Program Technician - Animal Science, University of Arkansas, Fayetteville
Ashlyn Ussery Agriculture and Natural Resources Educator, NE Rice Research & Extension Center
Josh Phelps Nutrition Specialist, Family & Consumer Science, Little Rock
Shalonda Nelson Administrative Specialist II, Community, Professional, & Economic Development, Little Rock
Shelby Gilmore Administrative Specialist III, Family & Consumer Science, Little Rock
Cassidy Witherspoon Administrative Specialist III, Clark County

Farewell to:

Misty Douzart Administrative Specialist III, Searcy County
Lauren Crow 4-H Program Assistant, Washington County
Megan Wells County Extension Agent - Family & Consumer Science, Little Rock
Chase Tucker County Extension Agent - Agriculture, St. Francis County
Ricky Blair Media Specialist - Video, Office of Communications, Little Rock
Al Rosendale Administrative Specialist I, Little Rock
Beth Vandre Administrative Specialist III, Sebastian County
Melissa Ann Gross County Ext. Agent - Family & Consumer Science, Calhoun County
Natacha Cureau Post Doctoral Fellow - Horticulture, Little Rock
Sharon Reynolds District Director - Ozark, Ozark District Office

