

# BL

## BLUE LETTER

April 2023

No. 3852



FROM THE DIRECTOR

# Season of Growth

April is an amazing month in Arkansas. Despite our recent bad weather and tornados, the spring planting season has been fast and furious. I am always amazed at how fast our growers can put in a crop. I know that our ag specialists have been working hard after a very short break from county meeting season to get their research plots in, in a timely manner as well. For administration, it is budget time. I, along with our finance group and department heads, have been looking at a lot of spreadsheets lately and doing financial planning for the new fiscal year. I was disappointed in the news, like many of you, that our recurring funding increase that was proposed did not make it into this year's state budget. However, I think Dr. Fields made some great progress, and hopefully, we can build on this in the next session. Meanwhile, I want to assure you all that the Extension Service is financially sound for the time being and in a good place.

I had one of those days this month that makes me very proud to be the Director of the Cooperative Extension Service. It started off with a drop in visit to our new county office in Jackson County. They were putting in the AV equipment and Staff Chair Matt Davis was hanging art on the walls. I would say we are in the finishing touches stage of something that I first started working

on over a decade ago. It is extremely fulfilling to me professionally to see this one completed, and I am very proud to have played a role in getting this resource to the Extension Center and to Jackson County. From there I went to Greene County for a groundbreaking ceremony on the site of the new Extension Center for that county. I was honored to get a chance to say a few words of gratitude to Judge Rusty McMillon as well as everyone else involved in making that facility happen. This is also a project over a decade in the making, and I am very happy for Staff Chair Lance Blythe and everyone in the Greene County office. They have been in a less than desirable office situation for a long time, and I know they are looking forward to its completion in about a year.

Our UADA Support Staff Conference was held on April 18 and 19. This was the first time this event was offered in-person since 2019, and we had great attendance both online and at the 4-H Center. This is an important opportunity to provide professional development, collaboration opportunities and show our gratitude to a group of folks that really keep the Division running on time. It was a good event, and I thank all those who were involved in putting it on.

I hope you all get a chance to get out and enjoy spring. ■

## INSIDE SCOOP

2. Alpha Iota Chapter Awards
3. High Tunnel Production Workshop
4. Spring Break "Cupcake Wars" Camps
5. EHC Cares State Project
6. Arkansas Show Pig Clinic
7. Tech Corner...And much more!

**U of A**  
DIVISION OF AGRICULTURE  
RESEARCH & EXTENSION  
University of Arkansas System

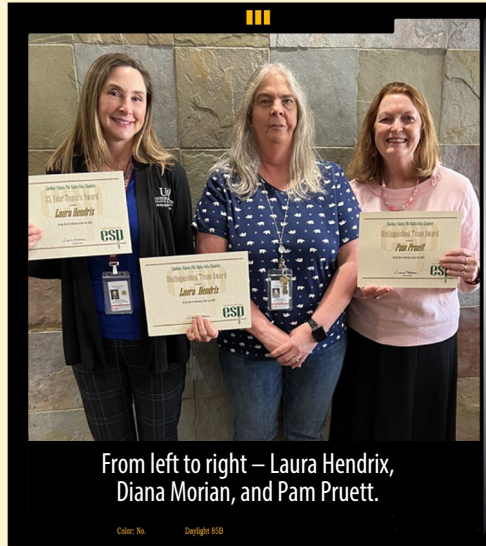
# Alpha Iota Chapter Award Recipients

## For the Distinguished Team Award

- Laura Hendrix
- Pam Pruett

This award is designed to recognize outstanding efforts of Extension staff teams — consisting of two or more individuals — for responding to and incorporating one or more critical issues into a specific educational program.

Laura and Pam's project, Financial Empowerment for Success in Transition to Re-entry, was designed to provide financial education and motivation to incarcerated individuals who are preparing for re-entry into society. Financial education can help these economically vulnerable consumers transition into society, build financial stability and reduce recidivism. A series of four sessions were conducted at a correction center. Evaluation surveys show that 98 percent of



participants report having increased knowledge, and 82 percent plan to adopt one or more recommendations. One participant said, "It has helped me build a better foundation and future for me and my family." This award will also be judged on the National level.

## For the 25 Year Tenure chapter award:

- Laura Hendrix
- Susan Pickle

## For the Retiree Service chapter award:

- Susan Pickle

Congratulations to the award recipients.

We are very proud of their accomplishments. ■

# Brinkley Small Business Event

Small business owners and entrepreneurs alike were present at the Small Business Event held in Brinkley on March 14. Valerie Turner, Monroe County extension staff chair, and Julie Goings, Phillips County extension Family and Consumer Sciences agent, hosted the event with the Brinkley Chamber of Commerce. Kamelle Gomez and Kim Magee, extension program associates for economic development, Claudia Wilson with the U.S. Small Business Administration and Frederic Smith with East Arkansas Enterprise Community provided participants with information about the services and opportunities available through each office. ■





# High Tunnel Production Workshop Teaches Best Practices

BL  
3

On March 23, nearly 60 individuals attended a high tunnel production workshop organized by Hempstead County extension agriculture agent Kim Rowe and hosted at the Southwest Research and Extension Center in Hope. Guests were welcomed by Rowe and SWREC director, Dr. Daniel Rivera.

Drs. Amanda McWhirt, Aaron Cato, Amanda Philyaw Perez and Hannah Wright Smith, extension specialists with the University of Arkansas System Division of Agriculture's Department of Horticulture, along with Sherrie Smith, diagnostician for the Arkansas Plant Health Clinic, spoke to participants about relevant topics within their areas of expertise. Attendees heard financial program information from Farm Credit of Western Arkansas and the Natural Resources Conservation Service, participated in a producer-led discussion

session and toured a high tunnel undergoing renovation to discuss structure and irrigation systems.

More than 65 percent of participants indicated their knowledge of high tunnel production significantly increased at this workshop, and 88 percent indicated the information delivered will potentially result in a change of practice in their farming operation. Hempstead County Extension would like to express our appreciation to Farm Credit of Western Arkansas for sponsoring lunch and to the Extension specialists and SWREC staff for helping make this event a big success. ■



U of A Horticulture IPM Specialist, Aaron Cato, speaks to the audience about managing insect pests in high tunnels. Photo by Lizzy Herrera.



U of A Commercial Horticulture Specialist, Amanda McWhirt, and retired U of A Plant Pathologist, Terry Kirkpatrick, discuss the Venturi system for fertigation with high tunnel workshop participants.

## UADA Business Office Retreat

The UADA Business Office - Finance and Office of Special Projects (OSP) Teams from both Fayetteville and Little Rock went on a retreat to the 4-H Center on Friday, March 31. The group completed the ExCEL Leadership Program including the ropes course and other team building activities. They also had an alarming time taking cover from the tornadoes later that afternoon. Taylor Knox and the 4-H team did a great job providing an interesting experience and took such great care of everyone. ■



UADA Business Office Members enjoying their team building experience at the ExCEL Program.

Fiscal Support Specialist, Mike Coven, working through the ropes course.

# Spring Break “Cupcake Wars” Camps



Amanda Stark, Prairie County extension 4-H program assistant, conducted a lively week of “Cupcake Wars” camps for children and preteens over the week of spring break. Each camp was a huge success and future camps are already being planned.

Participants made two different cupcakes each day. The first cupcake had to be made with a secret ingredient, and the second cupcake had to follow a theme. The older kids made them nearly independently, while the younger participants had some assistance from our

teen 4-H members, who helped conduct the camp. The goal is for them to be able to follow a recipe,

measure correctly and work together as a team. At the end of each day, judges Jay Bednar, Mitzi Osborne, Janis Toll and Sue Clayton tasted the cupcakes. Sue Clayton said there wasn't a bad cupcake, and Jay Bednar has already volunteered to help judge the next cooking camp that will be held this summer.

Our April 4-H meetings will be held April 19 at Hazen Community Center from 3:30 p.m.-5:00p.m. and April 26 at Gospel Mission Church in Des Arc from 3:30 p.m.-5:00 p.m. To join Prairie County 4-H, contact Amanda Stark at 870-998-2614 or [astark@uada.edu](mailto:astark@uada.edu). ■



Camp attendees work to create a cupcake masterpiece.



Camp attendees focused intently on their cupcake creation.

## Lafayette County Beef Cattle Production Meeting

The Lafayette County Extension Service hosted a Beef Cattle Production Meeting at the Lewisville Agri-Plex, on March 21. Charles Looney, extension Animal Science professor, gave an enlightening presentation on cattle improvement. Jerri Dew, Lafayette County extension agriculture agent and staff chair, shared information from the Division of Agriculture Parasitology Lab, offering assistance to anyone wishing to utilize it. Tracy Kelner, cattle producer and owner of The Beef Lady in Bradley, Arkansas, spoke to participants about her beef direct marketing business. The evening's program ended with Hempstead County Cattleman and National Beef Council Member Caleb Plyler discussing the advantages of having a local Cattlemen's Association. Plyler commended Lafayette County for their beef production. Lafayette

County ranked fourth in production in Arkansas District 70, as published in 2022 U.S. Department of Agriculture estimates. Attendees were treated to a BBQ meal provided and prepared by the Lafayette County Farm Bureau. Other meeting sponsors included KJL Animal Health, The Tool Store and Farmers Bank. ■



UA Beef Improvement Professor, Charles Looney, presenting research proven methods producers can use to weather the cattle market.



# EHC Cares State Project Focuses on Mental Wellness

BL  
5



The 2022-2024 Arkansas Extension Homemakers Council state project is "EHC Cares." EHC members focus on providing community services and education aimed at improving the mental health of our membership, our clubs, our communities and our state. In Benton and Washington Counties, "EHC Cares" efforts begin on a personal and club level with Mental Health Moments provided by county extension Family and Consumer Sciences agents.

During quarterly, multi-county meetings, EHC members are provided with and trained to deliver a new Mental Health Moment at their club meetings each month. Mental Health Moments encompass a variety of mental health topics such as volunteer burnout, hydration, physical activity or the importance of crafting and hobbies. Each month focuses on one topic and includes facts,

symptoms, suggestions toward improvement, assessment tools or questions and an opportunity to make a behavior change commitment. All information is presented in a brief and concise format that is intended to take no more than five minutes at meetings. The objective is to improve the mental health of members and clubs so that they may share the same information and strategies with others, extending the education and making an impact on those around them. ■

EHC members work together to improve mental care health.

## Animal Science Mourns Passing of Pauline Whitaker

Pauline Whitaker's desire to make life better for children in northwest Arkansas has manifested in many ways, including the construction of the animal science center that bears her name at the Milo J. Shult Agricultural Research and Extension Center. Whitaker passed away March 25 at age 93.

Pauline Whitaker is remembered for her generosity in helping improve educational opportunities and healthcare for youth in northwest Arkansas. Her gift helped complete the Animal Science arena that bears her name. Whitaker and her family moved

from Abilene, Texas, to Northwest Arkansas in the early 1960s. Her husband, Don, ran the first Walmart store in Rogers, and Pauline was the cashier who completed the store's first sales transaction. Later in life, Whitaker founded the Whitaker Family Foundation to support healthcare and education efforts. To read the entire article, visit <https://bit.ly/Pauline-Whitaker-tribute>. ■



Pauline Whitaker, left, and granddaughter Amy Whitaker visit the construction site as the Animal Science Center rises from the ground. Photo by Fred Miller.



# Arkansas Show Pig Clinic



On March 25, the Pope County 4-H Program partnered with the Arkansas Pork Producers Association, the Iowa Pork Producers Association State Co-Operative and Pottsville FFA to provide Arkansas 4-H and FFA members a complete Show Pig Clinic at the Pope County Fairgrounds in Russellville, Arkansas. Show industry leaders and nutrition specialists with Archer Daniels Midland covered several topics, including facilities, care and selection of show pigs, financial obligations and show health regulations for 74 participants from across the state. In addition, Pope County Extension 4-H Agent Ashley Flickinger, Clark County Extension Agriculture and 4-H Agent Cindy Ham, and 4-H Youth Livestock Instructor Allison Harman conducted a swine skill-a-thon for the youth in attendance, with awards being given to the top three participants in each age division. Lunch was provided to all by the Russellville office of Farm Credit of Western Arkansas. ■



Senior youth participants completing the Equipment ID portion of the Swine Skill-a-thon.



Show industry leader Mitchell Hankins discussing Selection of Show Pigs with the entire group.

## LEADERSHIP LOG



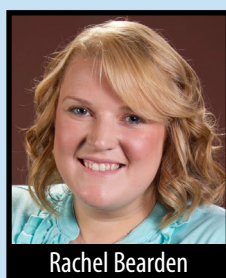
### LeadAR

Four UADA employees have been selected to participate in LeadAR Class 20. Their journey will begin with a teambuilding seminar at the C.A. Vines Arkansas 4-H Center on May 24-26, 2023.



Sherry Beaty-Sullivan

- **Rachel Bearden**, Hot Spring County extension agent and staff chair
- **Sherry Beaty-Sullivan**, Polk County extension agent and staff chair
- **Priscilla Thomas-Scott**, 4-H Events Coordinator



Rachel Bearden



Priscilla Thomas-Scott

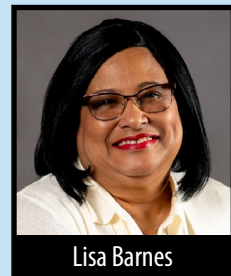
- **Dr. Dan Villamor**, Research Scientist, Entomology & Plant Pathology ■



Dr. Dan Villamor

### iLEAD

Lisa Barnes, Administrative Specialist III, Crop, Soil, and Environmental Science Department and member of iLEAD Cohort II, shares her notes from the March 2023 iLEAD virtual seminar. Read details [here](#). ■



Lisa Barnes

### Leadership Lunch and Learn

The March 2023 Leadership Lunch and Learn Book Review Series featured *Dare to Lead* by Brené Brown. Brandi Berven, an extension specialist for staff development at the University of Tennessee, reviewed Brown's book for our series. Read details [here](#). ■





# Tech Corner

BL  
7

## Password Managers

On May 1, the ability to save passwords in browsers (Edge, Chrome, and Firefox) will be turned off on your work computers. For those that store their passwords in browsers, we recommend you export them before May 1. Once we activate the security policy, you may lose access to them.

There are various options available for storing passwords. The best option is to use an approved dedicated password manager. The only password manager software currently approved for Extension use is 1Password. A license for 1Password can be requested from IT at the cost of \$99 per year (pricing is subject to change with each renewal). [1Password request form](#). Note: According to their terms and conditions, none of the free versions of password managers are approved for business use.



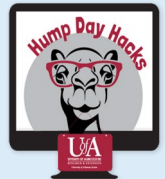
## Zoom Pro Tip – Employee Zoom Resources

Whether you're a new employee or just need a refresher on Zoom basics, the Video Conferencing Team has you covered. Visit the [Zoom Help for Employees](#) page on the Employee website for help getting signed into the Zoom web portal, installing and signing into the Zoom desktop client, and installing and signing into the Zoom mobile app.

## Hacks from Hump Day

No April Hump Day Hacks. The next Hump Day Hacks will be May 24, 2023. [Register now](#) to join the next Hump Day Hacks.

- [XLOOKUP function in Excel](#)
- [Paste Plain Text with Shortcut in Microsoft Word](#)
- [Q&A in Zoom Meetings](#)
- [Division of Agriculture PowerPoint Templates](#) ■



## 2023 TECH TUESDAYS WEBINARS

Have you missed any past Tech Tuesday webinars or want to join future webinars? Check out the recordings and other resources on the [Tech Tuesday Blog page](#). More Tech Tuesday topics coming soon! Did you miss the March 2023 Tech Tuesday Webinar? Check out the recording and resources for [Making the Switch – Paper Newsletters to Constant Contact](#) on the blog page.



# 4-H and FFA Horse Judging Contest



The Department of Animal Science hosted the Razorback Spring Horse Judging Contest in Fayetteville on April 15. This contest was designed to provide an opportunity for collegiate students to practice their horse judging skills prior to the Fall 2023 competitive season.

This contest will also serve as the Arkansas FFA

and 4-H state youth horse judging contest. Eleven universities from across the country have signed up to participate. A big thank you to Jordan Shore and Rachel Scott for coordinating this event that brings numerous students to the Pauline Whitaker Animal Science Center and the University of Arkansas campus. ■

# Southwest Regional and State Science Fairs

On March 31, the Soybean Science Challenge attended the Southwest Arkansas Regional Science Fair at Southwest Arkansas University - Magnolia and the Arkansas State Science Fair at the University of Central Arkansas in Conway. Junior and senior division awards were presented at SAU and three Arkansas State Science Fair awards were presented to students with the top soybean research projects. Regional student Senior Division winners received a \$300 cash award, and their teacher mentors received \$200. Junior Division winners win \$200, and their teacher mentors receive \$100. State winners win \$1,000 for first place, \$500 for second place and \$250 for Honorable Mention. Teachers win \$300, \$200, \$100 respectively. Student winners and their teacher mentors were:

- **Southwest Arkansas Regional Science Fair:**  
Senior Division winner, Kaylee Hanson, with teacher mentor Jessi Glass. Junior Division winner, Levi Foster, with teacher mentor Amanda Watson.
- **Arkansas State Science Fair:**  
First place: Alyssa Thomas and Drew Johnson from the Arkansas School for Mathematics, Sciences, and the Arts, with teacher mentor Dr. Lindsey Waddell  
Second Place: Rini Eluvanthingal, from Little Rock Central High School, with teacher mentor William Drew. Honorable Mention: Justus Osbon from Fayetteville Christian Academy, with teacher mentor Alicia Deavens.

The Soybean Science Challenge is a farmer-funded, statewide, high school education program that seeks to increase student knowledge about the value of Arkansas soybeans to the Arkansas economy, to the labor force, and ultimately to feed and fuel the world.



SW AR Regional Science Fair SR Division SSC Winner Kaylee Hanson with teacher mentor Jessi Glass.



Arkansas State Science Fair First place winners Drew Johnson and Alyssa Thomas.

The Soybean Science Challenge is a partnership between the Arkansas Soybean Promotion Board and the University of Arkansas System Division of

Agriculture Cooperative Extension Service.

For more information, contact Dr. Julie Robinson, [jrobinson@uada.edu](mailto:jrobinson@uada.edu) or Diedre Young at [dyoung@uada.edu](mailto:dyoung@uada.edu). ■

## Animal Science Honors Alumni and Friends of the Department

The University of Arkansas System Division of Agriculture's Department of Animal Science presented its 2023 Awards of Distinction during the annual Awards and Scholarship Banquet at the Don Tyson Center for Agricultural Sciences in Fayetteville on April 27. Dr. Dari Brown and Dr. Ron Morrow received Advanced Graduates of Distinction awards. Wendie Phelps received the Graduate of Distinction

award, and Vicky Watkins received the Friend of the Department award.

Each awardee was recognized for their contributions to the animal science industry and research, as well as to the Department of Animal Science in the Division of Agriculture Dale Bumpers College of Agricultural, Food and Life Sciences. ■



# Benefits Corner

## The Employee Assistance Program

From time to time, we could all use a little help. When we do, the licensed professionals from Arkansas Employee Assistance Program (AEAP) are ready. AEAP is a benefit provided to you and your family at no cost by the University.

If you need to talk to someone the AEAP is a ready resource for you.

The Arkansas Employee Assistance Program professionals have years of experience and are here to help when you're facing problems. Contact them directly for a confidential consultation. Toll Free: 800.542.6021 /

501.686.2588 / [eap-elink.uams.edu](http://eap-elink.uams.edu) to make appointments via the portal. EAP also provides online counseling through telephone or video call.

## Retirement Plans

Fidelity and TIAA are available and conducting virtual meetings and/or telephone appointments. Sessions may be set up during normal business hours as appointments are available. To set up a conference session with Fidelity, email [susan.screeton@fmr.com](mailto:susan.screeton@fmr.com).

To set up a conference session with TIAA, go to [www.tiaa.org/schedulenow](http://www.tiaa.org/schedulenow) and select Virtual Consultation. ■

# 4-H Poultry Show Team

Eleven members of the Drew County 4-H Poultry Show Team attended the Backwoods Poultry Show in Rison, Arkansas, on March 11. Eight members participated in showmanship in two different age divisions. Hadleigh G. placed first and Cheyenne B. placed second in the junior division. Ethan K. placed second in the intermediate division. In overall showmanship, Hadleigh G. placed fourth and Ethan K. placed fifth.

4-H Members showed birds in eleven different classes and took home several reserve and best of class awards. In the

junior show, River E. had Best Waterfowl with a grey Call duck, Best Bantam, and Grand Champion of the Show with a black Modern Game Bantam. Hadleigh G. received Reserve Waterfowl with a white Runner duck and also received Reserve Bantam, as well as Reserve Grand Champion of the Show with a black Old English Bantam. Micah H. won Best Large Fowl with a black Australorp. Congratulations to all the show team members and thank you for your dedication and hard work. ■



Members of the Drew County 4-H Poultry Show Team (from left to right): Eric, Brantley, River, Micah, River, Cheyenne, Hadleigh, Bentley, Olivia, Ethan, and Sy.



Drew County 4-H Poultry Show Team pictured with Showmanship Judge Lewis Hinkle (top row, second from the left).



# Grants & Contracts

PROJECT TITLE	AWARD AMOUNT	PI	GRANTING AGENCY
2023 NRA Monroe County 4-H Shooting Sports	1,360	Andrew Sayger	National Rifle Association Foundation (NRA)
Assessing Susceptibility of Insect Pests of Corn in Storage to Selected Insecticides	9,472	Ben Thrash	Corn & Grain Promotion Board
Investigating Emerging Production Recommendation for Sustainable Soybean Production	47,501	Ben Thrash	Arkansas Soybean Promotion Board
Refining insect thresholds in Arkansas soybean	45,413	Ben Thrash	Arkansas Soybean Promotion Board
Impact of Water Quality on Insects	20,000	Ben Thrash	Arkansas Soybean Promotion Board
Developing Scouting, Threshold and Management Practices for Stinkbug Complex (Red Banded, Green and Brown) in Arkansas Soybean	9,441	Ben Thrash	Arkansas Soybean Promotion Board
2023 NRA Baxter County 4-H Shooting Sports	1,986	Brad Runsick	National Rifle Association Foundation (NRA)
Corn and grain sorghum enterprise budgets	10,000	Breanna Watkins	Corn & Grain Promotion Board
Soybean Enterprise Budgets	10,000	Breanna Watkins	Arkansas Soybean Promotion Board
Economic Analysis of Corn and Grain Sorghum Production and Marketing Practices	5,713	Brian Deaton	Corn & Grain Promotion Board
Assessing Susceptibility of Insect Pests of Corn in Storage to Selected Insecticides	9,065	Glenn Studebaker	Corn & Grain Promotion Board
Refining insect thresholds in Arkansas soybean	9,291	Glenn Studebaker	Arkansas Soybean Promotion Board
Developing Scouting, Threshold and Management Practices for Stinkbug Complex (Red Banded, Green and Brown) in Arkansas Soybean	6,449	Glenn Studebaker	Arkansas Soybean Promotion Board
Groundwater Economics Study	20,000	Hunter Biram	Arkansas Agriculture Department
United Way of Columbia County 2023 Funding for 4-H programming	3,000	Jamie Lee Collier	United Way of Columbia County
Determining the value added of starter fertilizer with in-furrow fungicide on corn	2,750	Jason Davis	Corn & Grain Promotion Board
Determining the value of fungicide application on regional, whole-farm, field level, and within-field Scales	16,893	Jason Davis	Arkansas Soybean Promotion Board
Arkansas corn and grain sorghum research verification program	126,000	Jason Kelley	Corn & Grain Promotion Board
Optimizing Plant Population and Nitrogen Rate in Corn	31,000	Jason Kelley	Corn & Grain Promotion Board
Determining the value added of starter fertilizer with in-furrow fungicide on corn	8,662	Jason Kelley	Corn & Grain Promotion Board
Investigating Emerging Production Recommendation for Sustainable Soybean Production	164,284	Jeremy Ross	Arkansas Soybean Promotion Board
On Farm Variable Soybean Seeding Rate Study	45,680	Jeremy Ross	Arkansas Soybean Promotion Board
Science for Success	114,023	Jeremy Ross	Arkansas Soybean Promotion Board
Improving Technology Transfer for Profitable and Sustainable Soybean Production	69,122	Jeremy Ross	Arkansas Soybean Promotion Board
Soybean Research Verification Program	210,273	Jeremy Ross	Arkansas Soybean Promotion Board
Monitoring the Extent of Potassium Deficiency and Chloride Toxicity in Arkansas Soybean Fields	10,500	Jeremy Ross	Arkansas Soybean Promotion Board
Arkansas Future Ag Leaders Tour	5,000	Julie Robinson	Corn & Grain Promotion Board
Arkansas Future Ag Leaders Tour	5,000	Julie Robinson	Arkansas Soybean Promotion Board
Soybean Science Challenge	85,875	Julie Robinson	Arkansas Soybean Promotion Board
2023 NRA Crittenden County 4-H Shooting Sports	1,986	Katrina Owens	National Rifle Association Foundation (NRA)
Storm water management education and outreach program in Jefferson County	7,070	Kevin L Harris	Jefferson County
The Arkansas Discovery Farm Program	5,000	Mike Daniels	Corn & Grain Promotion Board
Arkansas Discovery Farm	23,544	Mike Daniels	Arkansas Soybean Promotion Board
Assessing Susceptibility of Insect Pests of Corn in Storage to Selected Insecticides	7,438	Nick Bateman	Corn & Grain Promotion Board
Refining insect thresholds in Arkansas soybean	15,996	Nick Bateman	Arkansas Soybean Promotion Board
Determining factors associated with poor grain quality in soybean and management options	17,622	Nick Bateman	Arkansas Soybean Promotion Board
Arkansas Future Ag Leaders Tour	5,000	Julie Robinson	Corn & Grain Promotion Board
Arkansas Future Ag Leaders Tour	5,000	Julie Robinson	Arkansas Soybean Promotion Board
Soybean Science Challenge	85,875	Julie Robinson	Arkansas Soybean Promotion Board
2023 NRA Crittenden County 4-H Shooting Sports	1,986	Katrina Owens	National Rifle Association Foundation (NRA)
Storm water management education and outreach program in Jefferson County	7,070	Kevin L Harris	Jefferson County
The Arkansas Discovery Farm Program	5,000	Mike Daniels	Corn & Grain Promotion Board
Arkansas Discovery Farm	23,544	Mike Daniels	Arkansas Soybean Promotion Board
Assessing Susceptibility of Insect Pests of Corn in Storage to Selected Insecticides	7,438	Nick Bateman	Corn & Grain Promotion Board



# Grants & Contracts (Cont.)

PROJECT TITLE	AWARD AMOUNT	PI	GRANTING AGENCY
Refining insect thresholds in Arkansas soybean	15,996	Nick Bateman	Arkansas Soybean Promotion Board
Determining factors associated with poor grain quality in soybean and management options	17,622	Nick Bateman	Arkansas Soybean Promotion Board
Determining the value of fungicide application on regional, whole-farm, field level, and within-field Scales	35,793	Terry Spurlock	Arkansas Soybean Promotion Board
Understanding Taproot decline; a soybean disease of increasing importance in Arkansas	19,802	Terry Spurlock	Arkansas Soybean Promotion Board
Comprehensive Disease Screening of Soybean Varieties in Arkansas	42,896	Terry Spurlock	Arkansas Soybean Promotion Board
Determining factors associated with poor grain quality in soybean and management options	29,409	Terry Spurlock	Arkansas Soybean Promotion Board
Developing a Stellite Based Field Scouting Tool	14,860	Terry Spurlock	Arkansas Soybean Promotion Board
Evaluation of new herbicides, premixes, programs, and application methods for improved control of problematic weeds in corn	42,362	Tom Barber	Corn & Grain Promotion Board
A Team Approach to Weed Management in Soybean	62,704	Tom Barber	Arkansas Soybean Promotion Board
A Team Approach to Weed Management in Soybean	65,705	Tommy Butts	Arkansas Soybean Promotion Board
Assess management options for corn nematodes in Arkansas	36,728	Travis Faske	Corn & Grain Promotion Board
Fast Tracking MG4 and Early MG5 Cultivars with Southern Root Knot Nematode Resistance	25,928	Travis Faske	Arkansas Soybean Promotion Board
Monitor and Management of Fungicide-Resistant Soybean Diseases in Arkansas	34,756	Travis Faske	Arkansas Soybean Promotion Board
Integrated Management of Soybean Nematodes in Arkansas	44,410	Travis Faske	Arkansas Soybean Promotion Board
Comprehensive Disease Screening of Soybean Varieties in Arkansas	58,229	Travis Faske	Arkansas Soybean Promotion Board
<b>TOTAL AWARDS FOR MARCH 2023: 2,043,065</b>			

# Personnel Changes

## Welcome Aboard:

Deborah Nistler – Assistant Vice President - 4-H and Youth Development, Little Rock  
 Cora Hicks – 4-H Program Assistant, Lonoke County  
 Amanda Rychtarik – County Extension Agent - 4-H, Baxter County  
 Christie Tyson – Administrative Specialist III, Woodruff County  
 Carri Dodd – County Extension Agent - Family & Consumer Science, Crawford County  
 LaGrand Elliott – Navigator Project Specialist - Agriculture Economics and Agriculture Business, Little Rock  
 Kerron Simpson – County Extension Agent - Family & Consumer Science, Ouachita County  
 Anthony Bowden – Assistant Professor - Ornamentals Specialist, Horticulture, Little Rock  
 Madelyn Bokker – Administrative Specialist III, Prairie County  
 Brett Cooper – Program Technician - Arkansas Discovery Farm, Crop Soil & Environmental Science, Little Rock  
 Sydney Holmes – Program Associate - Mental Health, Family & Consumer Science, Little Rock  
 Jeantyl Norze – Associate Professor - Organizational Accountability & Evaluation, Community, Professional, & Economic Development, Little Rock  
 Harleigh Livingston – County Extension Agent - 4-H, Ashley County  
 Gerard Degbedji – Fiscal Support Analyst, Finance, Little Rock

## Farewell to:

Bailey Golden – Administrative Specialist I, Arkansas County  
 Scharidi Joah Barber – Poultry Science, Instructor - Poultry Youth Program, Little Rock  
 Phylicia Bass – Office of Inclusion, Access, & Compliance, Legal/Compliance Assistant, Little Rock

