

BL

BLUE LETTER

July 2017
No. 3783



Summer brings challenges and opportunities for Extension

Well, June has come and gone, perhaps the best month of the year as it ushers in summer and finally – richly hot weather – a blessing? Most of you know that I spent much of my career outdoors in rice, and hot weather is something I always enjoyed – weird perhaps, but true.

Now we are in July, a month that can hold its own with regard to hot weather. A month that represents challenges to ANR from ticks to heat stress to crop pests, outdoor opportunity for 4-H youth out of school for the summer, work time for counties and communities to get things done during dry weather, and health, nutrition and food preservation issues for families. Yep, another great month in Extension.

After months and years of all our work, we are perhaps turning a corner on “no longer the best kept secret.” It is my observation that social media has really changed things for us the last couple of years, and in particular the last few months. I now routinely receive contacts from folks who clearly had never heard of us, totally outside of our regular audience, and that is a good thing. I have young people tell me they want to be a county agent or work as an extension specialist, and this is new – but a “good” new. Keep it up, stay professional, be positive – you are having an impact.

I recently got out of the office and visited a few counties in the Ozark and Ouachita districts with Sharon Reynolds and Beth Phelps. These visits with our agents and staff in Conway, Franklin, Logan, Polk and Montgomery counties reminded me of why we do what we do, and why I am privileged to do what I do. In all visits, I saw the positive changes resulting from effective extension programs and the enthusiasm of our colleagues and their clientele. I humbly appreciate the hospitality, and I even got to meet the newest member (at the time) of the Extension family, Maybelle Black, who impressed me with her professional, calm and pleasant demeanor. I predict she will be a great 4-H member and, hopefully, Extension colleague one day. I am looking forward to getting out more, visiting the Delta District with Jerry Clemons, and also visiting other counties statewide.

As we close the books on another great fiscal year for Cooperative Extension and the Division of Agriculture, I extend my thanks to all of my colleagues who work so hard and make such a positive difference to the people of Arkansas and our country.

– Dr. Rick Cartwright



FROM THE DIRECTOR

INSIDE

Arkansas 4-H teams place at 2017 Mid-America Grassland Evaluation Contest

Chi Epsilon Sigma yard sale raises money for scholarship program

Urban Pollutant Awareness and Ballot Bin Demonstration in Fayetteville

Benefits Corner

What's new in publications?

Barbie Luther named 2017 Arkansas Master Gardener of the Year

Extension scientists invited to 2017 Arkansas Governor's School

District 4-H O-Ramas “Masquerade – Unmask Your Potential”

Cross County 4-H'ers bring home trophies from Delta District O-Rama

Five reasons to use the Cooperative Extension Service print shop

Union County 4-H'ers participate in district O-Rama, advance to state competition

Grants and contracts

Personnel changes

Save the Date

Arkansas 4-H teams place at 2017 Mid-America Grassland Evaluation Contest

Arkansas 4-H Grassland Evaluation teams placed well at the 2017 Mid-America Grassland Evaluation Contest on June 7 in Springfield, Missouri. Arkansas students took second and fifth high 4-H individuals and took third and fourth place 4-H team honors.

The contest included a field of 16 teams from five states including Arkansas, West Virginia, Indiana, Ohio and Missouri.



Cleburne County 4-H team – Fourth place 4-H team and second high individual at the 2017 Mid-America Grassland Evaluation Contest.

Fulton County 4-H, coached by county Extension agent Brad Runsick, took third place 4-H team. Team member Chase Himschoot took fifth place individual honors.

Cleburne County 4-H, coached by Cleburne County staff chair Michelle Mobley, took fourth place 4-H team. Team member Kathryn Bechdoldt took second place individual honors.

Randolph County 4-H, coached by Randolph County staff chair Mike Andrews, and Madison County 4-H, coached by Madison County 4-H agent Jerry Jo Hamm, also competed in the event. Andrews also coached the Pocahontas FFA team that competed in the contest. ■



Fulton County 4-H team – Third place 4-H team and fifth high individual at the 2017 Mid-America Grassland Evaluation Contest.

Chi Epsilon Sigma yard sale raises money for scholarship program

A yard sale held by Chi Epsilon Sigma at the Little Rock State Office on June 3 was a big success, raising around \$1,000 for its scholarship program.

The sale involved months of planning and would not have been successful without the amazing number of donations received. Chi Epsilon Sigma greatly appreciates the dedication and hard work of those who helped make this possible. Sam Boyster and others spent the day with the team providing a much appreciated helping hand. Dr. Cartwright stopped by with doughnuts to provide moral support and check on the yard sale progress.



Volunteers on the day of the sale include: Front row, left to right – Jo Ann Fish, Patricia Johnson, Phyllis McQuany, Amy Hedges and Ursula Crow. Back row, left to right – Kristen Kiefer, Mark Kiefer, Cindy Maddox, Abby Hilton, Sam Boyster and Karen Clark. Not pictured: Gerard Degbedji and Stacey McCullough.

Chi Epsilon Sigma looks forward to the Second Annual Yard Sale and hopes to have even greater success. Our thanks to the Administrative Office for its assistance in making this project possible.

For more information about Chi Epsilon Sigma and how you can join our Little Rock Chapter, contact Kristen Kiefer at kkiefer@uaex.edu or 671-2299. ■



Satisfied shoppers at the Chi Epsilon Sigma yard sale.



Volunteers Nytalya Salter, Susan James, Abby Hilton, Cindy Maddox and Kristen Kiefer sort donations before the sale.

Urban Pollutant Awareness and Ballot Bin Demonstration in Fayetteville

Cigarette butts are the most littered item in the United States. Approximately 32 percent of litter found in storm drains is tobacco waste (Keep America Beautiful, 2009). Easily carried by runoff and wind, cigarette butts may be mistaken for food by wildlife and leach harmful chemicals into local streams and lakes.

Colin Massey, Washington County Extension agent - agriculture/water quality, began a pilot demonstration in fall 2016 in collaboration with City of Fayetteville Office for Sustainability, Parks Department, Parking, and Solid Waste and Recycling to address urban litter in the city's entertainment district.

Ballot bins are an engaging way to address cigarette butt litter by encouraging users to respond to a question and "voting" by disposing of their cigarette butt in one of two receptacles, allowing a public opinion poll to be generated (Hubbub UK, 2016).



Cigarette butts collected in ballot bins and two urban cleanups are packaged for recycling through Terracycle, Inc.

Two Ballot Bins were installed in high-litter areas, with over 30 pounds of butts collected in bins and urban cleanups. The pilot garnered great local media coverage and public feedback, and several local business owners expressed interest in hosting bins. Because of the positive response, 10 additional bins will go into service this summer.

This demonstration project is funded through the Arkansas Natural Resources Commission 319 grant program to raise awareness about urban pollutants carried by runoff into local waterways through storm drains. ■



Entertainment District patrons fill ballot bins and reduce tobacco litter in Fayetteville by "voting" on recent sporting events.

BENEFITS CORNER

Coming Soon

***LegalShield.** LegalShield is a new voluntary benefit that will be available to employees who are benefits eligible. LegalShield provides advice on an unlimited number of legal topics such as:

- Divorce
- Estate management
- Adoption
- Automobile accidents
- And much more.

***ID Watchdog.** ID Watchdog is a complete identity theft protection service. These services will be available to employees who are benefits eligible on a voluntary basis. ID Watchdog searches billions of data points and alerts you of any changes to your credit, financial transactions, personal information and more.

**These benefits will not be payroll deducted benefits but will be available on an individual pay basis at a large group discounted rate.*

Biometric Screenings. Screenings will take place at the Little Rock State Office in classroom 3 on Thursday, Sept. 7, 2017, from 9:00 a.m. until 12:00 p.m. and 1:00 p.m. until 4:00 p.m.

Flu Shot Clinic. Flu shots will take place at the Little Rock State Office in conference room 107 in the main building on Thursday, October 19, 2017, from 10:00 a.m. until 12:00 p.m.

More details to follow! Please direct all questions to yourbenefits@uaex.edu. ■

Please keep your home address updated in Banner Self Service.

What's new in publications? Find out at:
<http://www.uaex.edu/publications/new.aspx>

Barbie Luther named Arkansas Master Gardener of the Year

Union County lifetime Master Gardener Barbie Luther was named 2017 Arkansas Master Gardener of the Year. This is highest honor that Arkansas Master Gardeners award.

Luther has been actively involved in Union County Master Gardeners for 13 years. Her efforts on behalf of Union County Master Gardeners have been an inspiration to new and veteran club members alike.

Her passion is more than plants. She truly believes that educated and empowered volunteers can make a positive difference for any community and has proven it time and again. Congratulations to Barbie Luther.



Janet Carson with Barbie Luther at the 2017 Master Gardener Conference in Little Rock.



Gus Lorenz discusses pest pressure and management options for Arkansas producers.

Extension scientists invited to 2017 Arkansas Governor's School

Division of Agriculture Extension faculty went back to school this summer – to the 2017 Arkansas Governor's school that is. Dr. Jeremy Ross, Dr. Ken Korth, Dr. Gus Lorenz and Jon Zawislak presented invited lectures and responded to student questions on contemporary agricultural issues with 2017 Governor's School students in June at the Hendrix College campus in Conway.

The invitation for agricultural lectures was made to Dr. Karen Ballard by Dr. Mary Kathryn Stein, Director of the Arkansas Department of Education's Gifted and Talented and Advanced Placement Program. Ballard serves as PI for the Extension Soybean Science Challenge, funded through the Arkansas Soybean Promotion Board. Dr. Stein learned about the work of Extension at the 2017 Arkansas State Science and Engineering Fair in April 2017 when she stopped by the Soybean Science Challenge exhibit for teachers and students and stayed for a 30-minute discussion. The invitation for Extension to be a contributor to the 2017 Governor's school came 10 minutes later.

Lectures included Honey Bee Pollinators and Arkansas Agriculture presented by Gus Lorenz and Jon Zawislak on June 13. On June 16, Jeremy Ross and Ken Korth presented on the topic Genetically Modified Crops: The Challenge to Feed the World.

Ballard facilitated the presentations and noted that "these scientists actively engaged the students in consideration of the importance of solid science in undergirding food, fuel and fiber production. The scientists spoke about the research, some of which was their own, as well as from experience. After presentations, students and Governor's School faculty hung around late to engage in further conversations with the Extension scientists." The importance and



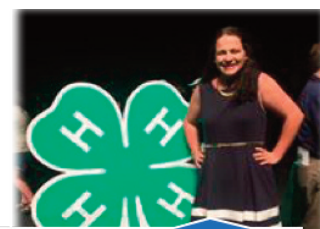
Education Rock Stars. Drs Korth, Ross, and Robinson answered student questions for 30 minutes following the invited lecture.

contemporary relevance of agriculture was elevated for all participants. The question of trust was raised during the discussions. It is a key factor for future public policy. The invitation to the Arkansas Governor's School provided a great step in bridging the gap in public understanding about the role of Extension in the development and use of research-based science to guide citizen practices and public policy. ■

District 4-H O-Ramas "Masquerade – Unmask Your Potential"

Junior and senior 4-H members had the opportunity to "unmask their potential" at the District O-Ramas on June 20-22. The District 4-H O-Ramas provide opportunities for 4-H members to display the skills developed through their project work in a variety of competitive activities such as Public Speaking, Health, Performing Arts and Wildlife.

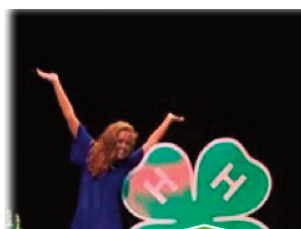
More than 1,675 4-Hers, volunteers, parents and Extension agents attended the three district events. In addition to competing in over 25 activities, the 4-Hers got to cast their ballots in the District Officer Elections by using electronic voting machines. Another highlight of the district events was the Spirit Competition. The following counties won the title in their district: Miller County – Ouachita District; Pope County – Ozark District; and Ashley County – Delta District. ■



Katie Head, Delta District VP



Jazzlan Rudd, Ouachita District VP



Sara Gardner, Ozark District VP

Cross County 4-H'ers bring home trophies from Delta District O-Rama

Several 4-Hers from Cross County brought home trophies at Delta District O-Rama held June 22 at East Arkansas Community College in Forrest City.

Cross County had five first-place winners, five second-place winners, two fourth-place winners, one third-place winner and two participation winners. Cross County 4-H members also received three trophies for record book submission.

Congratulations to the winners. ■





5

reasons to use the Cooperative Extension Service print shop:

- 1. We're fast.**
Single-page and other simple jobs can be turned around within hours.
- 2. We cost less than commercial competitors.**
For brochures, we cost 93 percent less than Staples. For saddle stitched books, we cost 88 percent less than Sir Speedy.
- 3. We understand your mission.**
We understand what you want to accomplish and know Extension publications inside and out.
- 4. Customers trust us.**
Along with you, we count the UA System President, Arkansas Scholarship Lottery and Pulaski County Sheriff's Department among our valued customers.
- 5. We're legal.**
Did you know state law prohibits printing state publications outside of a state print shop? (Amendment 54, Article 19 of Arkansas' constitution - some exceptions apply)

Call us at 501-671-2286

<http://uaex.edu/printsvcs>

printshop@uaex.edu
estimating@uaex.edu

Union County 4-H'ers participate in district O-Rama, advance to state competition

Fifteen 4-H members represent Union County at Ouachita District O-Rama. Members have been preparing for their competition since county O-Rama in April. All seven senior 4-H members from Union County qualified to go to the Arkansas State O-Rama in July at the University of Arkansas Fayetteville. ■

Front row, left to right: Caydee Holloway, first place, Junior Ornamental Horticulture; Brandon New, participation, Junior Bicycle; Clayton Bolding, first, Senior Human Development; Austin Fruge, first, Senior Safety; Christen Talley, first, Senior Environmental Stewardship. **Back row, left to right:** Ty Jones, third place, Junior Bait-casting; Breanna Hargis, third place, Senior Horticulture; Kaitlin Jones, first place, Senior Health; Hannah Crawford, first place, Senior Citizenship; Amber Sweeney, first place, Senior Entomology Talk; Elizabeth Dison, fifth place, Junior Veterinary Science; Anna Fruge, participation, Junior Purchased Fashion; Kamyrrn Fulton, participation, Junior BB Gun Safety; Zoe Clark, third place, Junior Horse; and Natalee Speer, third place, Junior Animal Science.



Grants and Contracts for Month Ending June 30, 2017

Project Title	Award Amount	Principal Investigator	Granting Agency
Rice Enterprise Budgets and Production Economic Analysis	\$ 8,000	Archie Flanders	Rice Research Promotion Board
Crop Enterprise Budgets and Production Economics for Corn and Grain Sorghum	10,000	Archie Flanders	Corn & Grain Promotion Board
Target Leaf Spot IPB	15,000	Bill Robertson	Cotton Incorporated
Cereal Rye Termination Timing	15,000	Bill Robertson	Cotton Incorporated
Weed Management in Rice	98,762	Bob Scott	Rice Research Promotion Board
Leveraging Limited Resources: An Income Enhancement Strategy in Rural Development for Missouri, Arkansas and Georgia Meat Goat Farmers	27,820	Chelsey Ahrens	Mississippi State University
ISM-555 CP DC100 Rate Definition – Plant Bugs on Cotton	10,480	Glenn Studebaker	Syngenta Crop Protection, Inc.
Management of Sugarcane Aphid in Grain Sorghum	12,000	Glenn Studebaker	Corn & Grain Promotion Board
Refining the Economic Threshold for Whorl Feeding Caterpillars in Non-Bt Field Corn	7,993	Glenn Studebaker	Corn & Grain Promotion Board
Rice Stink Bug Damage Assessment in Grain Sorghum	6,497	Glenn Studebaker	Corn & Grain Promotion Board
Developing a Threshold for Armyworms in Rice	27,000	Gus Lorenz	Rice Research Promotion Board
Rice Insect Control	38,000	Gus Lorenz	Rice Research Promotion Board
Rice Stink Bug	70,548	Gus Lorenz	Rice Research Promotion Board
Potential Exposure of Honey Bees to Insecticides in Rice	19,000	Gus Lorenz	Rice Research Promotion Board
Insect Control in Grain Sorghum	8,500	Gus Lorenz	Corn & Grain Promotion Board
Management of Sugarcane Aphid in Grain Sorghum	16,000	Gus Lorenz	Corn & Grain Promotion Board
Refining the Economic Threshold for Whorl Feeding Caterpillars in Non-Bt Field Corn	8,003	Gus Lorenz	Corn & Grain Promotion Board
Rice Stink Bug Damage Assessment in Grain Sorghum	8,005	Gus Lorenz	Corn & Grain Promotion Board
Arkansas Rice Performance Trials	78,000	Jarrold Hardke	Rice Research Promotion Board
Continuation of the DD50 Program to Include Seeding Date Affect on Grain Yield and Development of New Cultivars	74,000	Jarrold Hardke	Rice Research Promotion Board
Agronomic Production Practices for Rice	128,000	Jarrold Hardke	Rice Research Promotion Board
Understanding Autumn Decline – H2S Pathology	1,000	Jarrold Hardke	Rice Research Promotion Board
Economics of Fungicides Application for Sheath Blight Disease of Rice	1,000	Jarrold Hardke	Rice Research Promotion Board
Developing Irrigation Tools for Furrow Irrigated Rice	1,500	Jarrold Hardke	Rice Research Promotion Board
Rice Research Verification Program	179,787	Jarrold Hardke	Rice Research Promotion Board
Agronomics of Alternative Irrigation Strategies	119,710	Jarrold Hardke	Rice Research Promotion Board
Corn and Grain Sorghum Verification Program	114,000	Jason Kelley	Corn & Grain Promotion Board
Developing Profitable Irrigated Rotational Cropping Systems	12,000	Jason Kelley	Corn & Grain Promotion Board

Grants and Contracts (cont.)

Project Title	Award Amount	Principal Investigator	Granting Agency
Evaluation of High Input Practices to Increase Corn and Grain Sorghum	17,000	Jason Kelley	Corn & Grain Promotion Board
Evaluation of Differences in Fixed and Flex-Ear Corn Hybrids	15,000	Jason Kelley	Corn & Grain Promotion Board
Best Practices and Compliance for Web Content and Digital Media Delivered by State and Local Extension Services	10,947	Julie Robinson	Memorial Hermann Health System
Development of Online Course for Corn Producers and Consultants	15,000	Julie Robinson	Corn & Grain Promotion Board
FY 17 Arkansas IFA Grass Sod Treatments	5,000	Kelly Loftin	USDA, APHIS, PPQ
Arkansas Discovery Farm Program	5,000	Michael Daniels	Corn & Grain Promotion Board
Management of Sugarcane Aphid in Grain Sorghum	12,000	Nick Seiter	Corn & Grain Promotion Board
Refining the Economic Threshold for Whorl Feeding Caterpillars in Non-Bt Field Corn	8,004	Nick Seiter	Corn & Grain Promotion Board
Rice Stink Bug Damage Assessment in Grain Sorghum	6,498	Nick Seiter	Corn & Grain Promotion Board
Detection, Spread, and Economic Impact of Southern Rust in Southeast Arkansas Corn Fields Using Remote Sensing and Spatial Analysis Technologies	24,461	Terry Spurlock	Corn & Grain Promotion Board
Develop Practical Management Strategies for Foliar Corn Diseases in Arkansas	9,971	Terry Spurlock	Corn & Grain Promotion Board
Project Testing Protocol – Provisia Project Attachment A-24	3,200	Tom Barber	BASF Corporation
A Team Approach to Improved Weed Management in Rice	88,365	Tom Barber	Rice Research Promotion
Evaluation of Various PSII Herbicides for Corn Tolerance and Effective Weed Control as Potential Replacements for Atrazine	35,500	Tom Barber	Corn & Grain Promotion Board
Determining Yield Effects from Drift Rates of Common Herbicides and Evaluation of New Herbicides and Technologies in Grain Sorghum	11,498	Tom Barber	Corn & Grain Promotion Board
Develop Practical Management Strategies for Foliar Corn Diseases in Arkansas	34,716	Travis Faske	Corn & Grain Promotion Board
Irrigation Water Management Specialist	200,000	Vic Ford	Natural Resources Conserva-
Solanaceous Crop Survey	13,399	Vic Ford	Arkansas State Plant Board
Rice Breeding Program Pathology Tech Support	6,432	Yeshi Wamishe	Rice Research Promotion
Development of Practical Diagnostic Methods for Monitoring Rice Bacterial Panicle Blight Diseases and Evaluate Rice Germplasm for Resistance	53,000	Yeshi Wamishe	Rice Research Promotion Board
Development of Short Term Control for Bacterial Panicle	45,000	Yeshi Wamishe	Rice Research Promotion
Understanding Autumn Decline - H2S Pathology	19,000	Yeshi Wamishe	Rice Research Promotion
Economics of Fungicide Application for Sheath Blight Disease of Rice	19,500	Yeshi Wamishe	Rice Research Promotion
Total Awards for June 2017	\$1,774,096		

Personnel changes

Please welcome the following:

Patsy Carter, Administrative Specialist, Ag Economics and Agribusiness, effective June 1, 2017.

Brandi Danner, 4-H Program Assistant, Arkansas County - DeWitt, effective June 1, 2017.

Stephanie Drombetta, Administrative Specialist, Family and Consumer Sciences, effective June 1, 2017.

Tammy Farnam, Administrative Specialist, Perry County, effective June 1, 2017.

Alyssa Huber, Administrative Specialist, Community and Economic Development, effective May 16, 2017.

Casey Jarding, County Extension Agent - Family and Consumer Sciences, Franklin County - Ozark, effective June 1, 2017.

Autumn Johnson, Administrative Specialist, Arkansas County - DeWitt, effective June 1, 2017.

Ashley McCormick, Program Technician, Crop, Soil and Environmental Sciences, effective May 16, 2017.

Jack Pace, Program Associate - Entomology, Southeast Research and Extension Center, effective May 16, 2017.

Wes Plummer, Program Technician, Crop, Soil and Environmental Sciences, effective May 16, 2017.

Joshua Yates, County Extension Agent - Agriculture/4-H, Polk County, effective May 16, 2017.

Extension says goodbye to:

Ronnie Bateman, Pest Management Program Associate, Southwest Research and Extension Center, Hope, effective June 30, 2017.

Ursula Crow, Warehouse Specialist, Warehouse, Little Rock, effective June 30, 2017.

Rick Fields, 4-H Science and Curriculum Coordinator, 4-H and Youth Development, effective June 15, 2017.

Shirley Osburn, Food Preparation Supervisor, C. A. Vines Arkansas 4-H Center, effective June 2, 2017.

Elizabeth McQuay, County Extension Agent - Family and Consumer Sciences, Randolph County, effective June 5, 2017.

Brenda Waldrum, Grant Contract Analyst, Office of Sponsored Programs, effective June 30, 2017.

Save the Date

State Faculty Conference, Little Rock State Office Auditorium – Dec. 4, 2017, 10 a.m.

Agricultural Awards Luncheon, Don Tyson Center for Agricultural Sciences, Fayetteville (near Pauline Whitaker Arena) – Jan. 12, 2018