

# BL

## BLUE LETTER

June 2022

No. 3842



# Summer Hustle

I want to compliment everyone involved with District 4-H O-Ramas this year. Even though I have been with Extension for 20 years now, I attended my first “real” O-Rama last week. It was fun and admittedly a bit nerve-wracking for me watching those young people compete. I had no idea so many folks were involved and so many volunteers (or are “voluntold”) to take part from our organization. What teamwork! Our state officers were there too, and I have to say they are doing a great job this year. I see them everywhere and imagine they have little time for anything else.

Events like O-Rama and our field days make me glad we are in person again. Even though COVID-19 numbers are up a bit, we are continuing to meet with limited restrictions. This is probably the new normal as personal responsibility seems to be the message of the day. So, if you are not feeling well, respect others and take a sick day, get tested and come back when you’re not contagious.

One of the most exciting things I have done since becoming the director of Extension is helping with the development of our new intern program. This program is fully underway. Our interns have been trained and sent to their respective counties. I am thoroughly enjoying the reports coming in about their exploits! I have seen them out in fields, at 4-H events, community events and doing many other Extension activities. I owe much of my success to a company internship that I had many years ago and to the person I worked for. My hope is that our intern program and the agents they are paired with will be just as beneficial to these young adults as it was to me.

The Board of Trustees met and approved our budget for next fiscal year. Although we have some financial challenges, overall, we are in good shape for the coming year. This approval includes a one-time merit-based salary adjustment program for most employees and some permanent salary increases for certain positions. I am pleased that we will be able to make this investment in our people at the end of July.

The Division of Ag hosted two national conventions this month, and both were great successes from what I have heard. I want to compliment our development team on successfully hosting this year’s National Agricultural Alumni and Development Association (NAADA) meeting in Fayetteville and our Information Technology team on hosting the National Extension Technology Community (NETC) conference in Little Rock. I was able to briefly attend both these meetings, and I know that many folks worked very hard to make these a success and bring national attention to the Natural State and the Division of Agriculture.

Closer to home, I want to congratulate Dr. Julie Robinson and the 2022 graduates of our Extension iLEAD program. What a great group that I was able to visit with twice during their class. This year’s group included several Division employees from the Experiment Station side, and my understanding is there is great interest from others for next year. This is great internal recognition of the value of our professional development programs.

We are blessed by folks in our organization who work hard to make us look good both externally and internally! ■

## INSIDE SCOOP

2. Welcome Extension Interns
3. Cook Smart, Eat Smart
4. Leadership Log
5. Diabetes Education: You Are Not Alone
6. Accessibility Corner
7. Tech Corner
8. Summer Cereal Drive Results
9. National Health Outreach Conference... And much more!

# UofA

**DIVISION OF AGRICULTURE**  
**RESEARCH & EXTENSION**

University of Arkansas System



# Welcome Extension Interns!

The first group of UADA interns in over 25 years reported to the Arkansas 4-H Center May 23-25 where they networked, learned about Extension and its history from Dr. Scott, met their county staff chair, toured the state office, experienced the EXCEL program's low and high ropes, and took the True Colors Personality Assessment.

You will see them around throughout the summer, so be sure to ask how the internship is going and what they are enjoying most. They will conclude the internship July 29 at the Arkansas 4-H O'Rama at Fayetteville. ■



2022 UADA County Extension Agent Interns and Staff Chair. Left to Right: Rae Anna Dawson, Branon Thiesse Craighead County, Caitlyn Simon, Mary Beth Groce Faulkner County, Belle Richardson Craig, Bob Powell Yell County, Rayvin Callaway, John Gavin Bradley County, Stephanie Ward, Keith Perkins Lonoke County, Colton Hewitt, Bethany Barney Little River County, Atalanta Baker, Alicia Hugen Conway County, Anna White, Jennifer Caraway Miller County, Sarah Gaskin, Michelle Mobley Independence County, Brent Clark, Brian Haller (Lensey Ford, not pictured) White County.

## Division of Ag SWAG

Welcome to the Division of Ag SWAG Logo Apparel Store where employees can purchase logo shirts, hats, jackets, etc. to up their professional vibe promoting One Division of Agriculture!

The site is intended for the personal purchase of logo apparel in addition to the apparel provided by the Division. Division units are able to provide logo apparel for its employees as allowed by the current logo apparel guidelines, which can be found here: [https://uada.edu/docs/Logo\\_Apparel.pdf](https://uada.edu/docs/Logo_Apparel.pdf). Go to the employee's only website under communications, choose Division Brand Graphics button and follow the link found on the communications page: Logos, Branding and More, "order logo apparel online." You can find our logo apparel online store here: <https://business.landsend.com/store/uada/>.

You can set up a Lands' End business account with password. This account is in no way connected to your employee account. Shop from the available catalogue and add the appropriate UADA logo to your items. Please follow the logo

standards, found at [http://uaex.uada.edu/media-resources/docs/logo\\_guidelines.pdf](http://uaex.uada.edu/media-resources/docs/logo_guidelines.pdf), with placement of the Division logo located on the left chest, using only approved colors: all black, all white, or red and black combined.

Purchase your professional logo items with your personal credit card. Lands' End will provide you with an itemized receipt to make requesting reimbursement for the cost of embroidery only, much easier in Workday!

This opportunity is brought to you by iLEAD cohort I graduate, Laura Anne Warren. "I wanted to create an online store front for all UADA employees to purchase the type of logo apparel that meets their needs. We are all representatives of the One Division of Agriculture and by providing access to a variety of high-quality logo options we can build our brand together. With gratitude to Dr. Bob Scott, Dr. Vic Ford, Matt Brown, Mary Hightower, Christina Miller, Tracy Courage, Amy Hedges, Mark Keifer, Amy Cole and Chris Meux for your guidance and mentorship." ■



# Progressive Agriculture Safety Day

BL  
3

The Lincoln County Cooperative Extension Service recently conducted Progressive Agriculture Safety Day for all county fourth and fifth grade students. Lincoln County Extension partnered with area agencies, the County Judge, and Arkansas 4-H to provide age-appropriate, hands-on learning sessions covering electrical, camping, ATV, tractor, first aid, and fire safety.

Post-surveys reported that every fourth and fifth grade teacher believed this Extension Service program was beneficial for their students. One teacher stated, "I believe it's important for kids to know what they need to do, and not to do, in emergency situations."

Student post-surveys showed one student learned, "When you're in a car with a fallen powerline, jump out with both feet at once instead of one at a time." Another student learned, "To always use a helmet when driving a four-wheeler, bike, or side-by-side." On the surveys ninety-five percent of students stated a safety behavior or skill that they planned to put into use. ■



Jimmy Brown Elementary students attend Progressive Agriculture Safety Day.

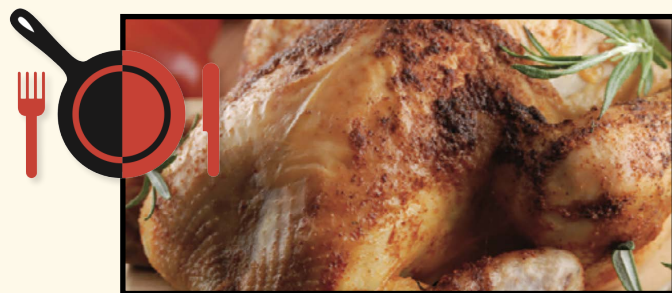
## Cook Smart, Eat Smart

SNAP-Ed conducted a Cook Smart, Eat Smart cooking school in-service for 16 FCS agents at the Little Rock State Office on June 3. Agents learned about the curriculum, lessons learned from other agents' experiences, knife skills and correct measuring techniques. They spent the afternoon preparing recipes from the curriculum, including Cajun catfish, Oven-fried Parmesan chicken, Chili garlic roasted broccoli, grilled vegetables, packet cooking with chicken and veggies and mini meatloaves.

Cook Smart, Eat Smart is a curriculum for adults and older teens who want to learn how to cook. It emphasizes healthy preparation techniques, simple ingredients, and limited use of prepared foods. Each session covers several basic cooking techniques and topics related to eating and preparing meals at home. In addition, information is presented to help participants plan, shop and stock a pantry that encourages simple meal preparation.

Participating FCS agents included Jessica Angel, Ronda Best, Karalee Black, Leigh Ann Blevins, Jamie Collier, Elizabeth Daigle, Ashley Fulks, Amber Hairston, Anna Harlan, Marla Lane, Pamela Luker, Christa Mazzanti, Tonya McKenzie, Emilee Moody, Jewell Sanders and Danielle Watson.

The SNAP-Ed State Office team thanks Amy Monk and Leigh Ann Bullington for their help with the training. ■





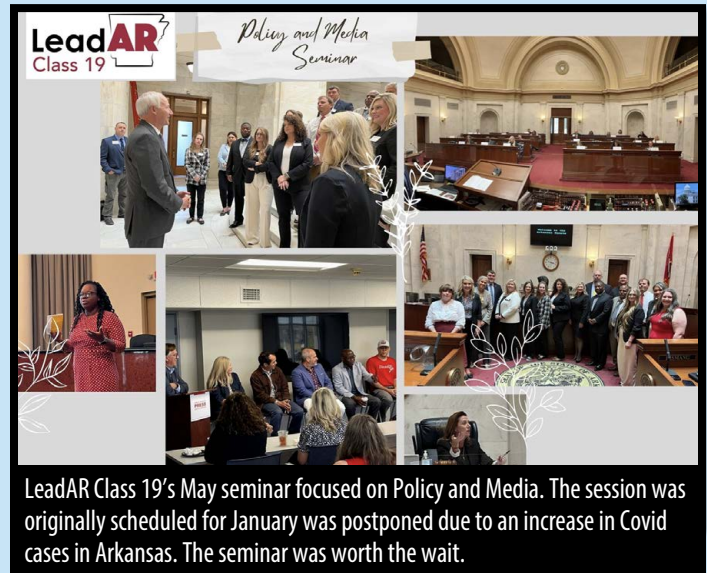


## May Leadership Lunch and Learn: Strategic and Critical Thinking

In the May 2022 Leadership Lunch and Learn session, participants explored strategic and critical thinking. Dr. Hunter Goodman, an assistant professor of community, workforce, and economic development at the University of Arkansas System Division of Agriculture, shared her insights on the topic. For more details click [here](#).

## LeadAR Class 19 Experiences Mock Legislative Session

LeadAR Class 19's May seminar focused on Policy and Media. The session was originally scheduled for January and was postponed due to an increase in Covid cases in Arkansas. The seminar was worth the wait. For more details click [here](#).



LeadAR Class 19's May seminar focused on Policy and Media. The session was originally scheduled for January was postponed due to an increase in Covid cases in Arkansas. The seminar was worth the wait.

## iLEAD Cohort I--Two Powerful Presentations Focused on Heart

The presenters in the latest iLEAD Cohort I virtual session focused on heart. For more details click [here](#). ■

# Walk Across Arkansas Spring 2022



Walk Across Arkansas Spring 2022 wrapped up on May 15, with a total of 359 participants on 87 teams. They collectively logged 776,390 physical activity minutes. Of this year's participants:

- 78% of participants met their set goal of minutes per week for most of the program.
- 93% of participants got at least 150 minutes of exercise per week, which is the physical activity recommendation from the Centers for Disease Control and Prevention.

Participants commented the following about WAA this past spring session:

- "I lost 7 pounds. I modified my diet and exercised more. Because of these changes I lowered my blood pressure and changed my diet to include more vegetables."
- "The program encouraged me to get up and move more than I was. I am a diabetic and the exercise has improved my A1C."
- "I can tell that my balance has improved! I most certainly feel better. I have a better outlook on life. Thank you so much for offering this program and look forward to the next session."

The fall session of Walk Across Arkansas registration opens Aug. 29. The competition will run Sept. 12- Nov. 6. To find out more about Walk Across Arkansas, including the winning teams go [here](#). ■



# Diabetes Education: You Are Not Alone

Jane Newton, CEA-FCS in Lincoln County recently partnered with DePaul Community Health Center in Dumas and the Star City Branch Library to conduct a series of three You Are Not Alone diabetes education classes.

The classes covered myths and facts about diabetes, and information on meal planning, serving sizes, coping with triggers, food safety, dealing with stress, the benefits of physical activity. Of the 19 participants, 58% attended all three sessions.

Each class featured a meal from a different local restaurant – Smokin' Mills Steakhouse and

BBQ, Mike's Place Pizza Pro, and El Charro Mexican. The meals were used as examples of how people with diabetes can dine out and still maintain their meal plans.



Jane Newton leads "You Are Not Alone" diabetes education class.

One participant, Linda Reep, stated, "I had a wonderful time and looked forward to coming to the classes! We were given a lot of great and valuable resources that we can actually use and the two Janes answered all our questions. The meals were delicious, and it was helpful to see that we could eat out and still stay on the meal plan. The tools we were given will help immensely with managing our diabetes. We appreciated everything!" ■

## Homemakers Council Celebrates 110 Years

More than 240 members of Extension Homemakers Clubs met in North Little Rock May 31-June 2 for the annual Arkansas Extension Homemakers Council state meeting and simultaneously celebrated their 110th year as an organization.

Members participated in a variety of educational and craft classes led by Extension employees, community leaders, fellow EHC members, and 4-H members. The fun and festivities carried into the evening with Tuesday night bingo and a Wednesday night talent show and EHC birthday cake. EHC awarded scholarships to two family and consumer science college majors as well as to the Arkansas 4-H Foundation.

EHC's officers for this year are Debbie Thompson,

president; Karla Wadley, vice president; and Darlene Holliday, secretary. Outgoing officers include Karen Bell Fox, immediate past president, and Bernadette Freigy, secretary. ■



2020-22 Executive Committee. From left to right: Karen Bell Fox, Kaye Green, Deb Teague, Debbie Thompson, Carolyn Morris, Cheryl Stewart (front center).





# Disability in Arkansas

Did you know, according to the CDC, 1 in 3 Arkansans has a disability? That's more than 700,000 people!

## Fast Facts:

- **Over 25% of the US population is living with a disability.** That's more than 61 million people, according to the CDC.
- **Arkansas has the 4th highest percentage of its residents on Social Security disability,** according to the Disability Determination for Social Security Administration.
- **27% of SNAP households reported having a family member with a disability** according to the Center on Budget and Policy Priorities reported in 2017.
- **20% of Arkansans do not have internet access at home,** as reported by the Arkansas

Broadband Development group. Slow or no internet is considered a situational disability.

At Extension, we are working to strengthen agriculture, communities, and families by connecting trusted research to the adoption of best practices. Since we are helping to improve the lives and livelihoods of Arkansan citizens, farmers, and families - that means we are working for ALL Arkansans - not just people without disabilities.

By making our content as accessible as we are able, we are ensuring that our message is reaching as many people in our state as possible. ■



## Future Opportunities in Rural Workforce Development (FORWARD)

UADA-Cooperative Extension is part of a national pilot program titled Future Opportunities in Rural Workforce and Rural Development (FORWARD) in partnership with the Association of Public and Land Grant Universities (APLU) and funded by Ascendium. UADA-Cooperative Extension's Community, Professional, and Economic Development team, along with Purdue University Extension and Utah State Extension, are piloting the newly developed curriculum designed to build extension agents' capacity as leaders, coaches, and change agents for job creation in rural communities.

FORWARD is currently being piloted in Hempstead County with the leadership of Agent Terrie James and support of CPED's Dr. Hunter Goodman, and Tabatha Duvall. James connects school districts, chambers of commerce, economic development organizations, UA-Hope

Texarkana, and partners across the county to identify and map career pathways for potential workers. The career pathways will be a tool to connect community partners and provide a path for local workers to obtain jobs.

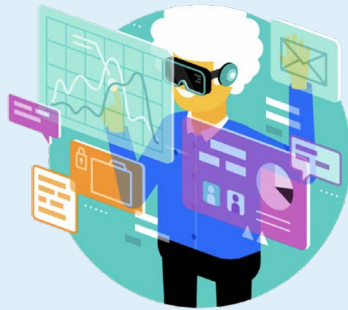
"This program has provided an opportunity to bring the best resources on workforce pathways to Hempstead County from CES as well as other states working on these issues," James said. "The program fit perfectly into the County Extension Council goals for 2022." ■





## Mobile Application Management

Any mobile device that accesses organization-owned resources, such as the Microsoft 365 suite, may store information that is sensitive both to the organization and the user. Should the mobile device be lost, stolen, or compromised, it presents a serious risk of a data breach for both the organization and the individual user.



To minimize this risk, UADA is implementing a Mobile Application Management (MAM) mechanism, using Microsoft Intune. This is another phase of the increased security measures we have been implementing.

MAM enables IT administrators to secure organizational data within an application, such as Microsoft Outlook, Word and Excel while leaving personal data not connected to the organization unaffected. At no time does the organization have access to other areas of your device; **your privacy and full control of your mobile device are always maintained.**

For more details about the benefits, applications affected, using MAM, and other information, visit our [website](#).

If you have any issues, contact the [IT Help Desk](#).

## Zoom Quick Reference “Show Me” Video

[Create a Quiz in Advanced Polling](#) (4.25 minutes)



## Hacks from Hump Day

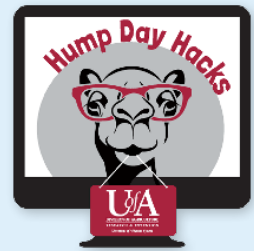
**Canva Hack:** Canva Enterprise Software Resources.

**Box Hack:** Adding Box Folders to Microsoft Teams Instructions.

**Foxit Hack:** Extracting pages from multi-page Foxit PDFs.

**Outlook Hack:** Use Outlook Find Time instead of Doodle Poll.

**PPT Hack:** PowerPoint Keyboard Shortcuts.



## Social Skills

Join us for July Social Skills: Writing for Social Media. [Register](#) and check out past Social Skills sessions. ■

## 2022 TECH TUESDAYS WEBINARS

**Register and join us for the July 12, 2022, Tech Tuesday “Zoom – New Features” webinar.**

Did you miss June Tech Tuesday [Video Editing Options](#)? Check out the recording and resources.





# Appear on PBS to Address Mental Health Issues Related to Farmers

A group of Extension specialists recently appeared on an Arkansas PBS program examining the mental health crisis facing farmers. The segment — Growing Hope: Combating Stress in Agriculture — aired May 26.

Panelists included Jessica Angel, Cleburne County FCS/4-H agent; Amanda Welch, 4-H youth development specialist; Rebecca Simon, instructor, Family Life and Child Care; and Dr. Brittney Schrick, assistant professor and family life specialist.

The panelists discussed how mental health challenges affect agricultural communities and how Extension and other agencies provide resources to meet these needs. Segments included a discussion of farm stressors from the producer perspective with Angel and Simon speaking about their experiences working on their family farms and a look at yoga for farmers featuring the Arkansas 4-H Yoga for Kids program led by Angel and Welch at Concord School District. Dr. Schrick and Welch spoke

about suicide risk and ways to address mental health crisis in the agriculture industry, Extension mental health programs such as Mental Health First Aid and QPR Suicide Prevention training, and other resources available to Arkansans. The full episode is available on PBS or Youtube [here](#). ■



Jessica Angel leading second graders through balloon breathing exercise.

## Chi Epsilon Sigma Summer Cereal Drive

Thanks to everyone who donated in support of the Summer Cereal Drive! Through your generosity, we collected 102 boxes of breakfast items and \$650 in online donations. ■



Chi Epsilon Sigma



# National Health Outreach Conference

BL  
9

The Health and Wellness team, in collaboration with County Agent Julie Goings and UAMS lead evaluator Matthew Gannon presented information on the Phillips County Food Insecurity Project and Mobile Food Pantry at the annual National Health Outreach Conference in Kansas City, Missouri. Heather Wingo also presented a poster entitled “Walkaholics, A Healthy Addiction,” highlighting the achievements of the Walk Across Arkansas program during 2020-2021. ■



From left to right: Heather Wingo, Bryan Mader, Julie Goings, Matthew Gannon, Darby Treat, Jessica Vincent, Tyler Brown.

## International SeaPerch Challenge



On June 4, three Arkansas 4-H teams took their robotics knowledge to the next level at the 2022 International SeaPerch Challenge in College Park, Maryland, where they competed with students from across the country and around the world.

The Grant County 4-H Wave Shockers from Sheridan, the Madison County 4-H Trumpinator team from Huntsville, and the Washington County 4-H BZBot 2 team from Fayetteville attended the international competition. Teams steered their remotely operated vehicles through two underwater challenge courses and were also judged on their engineering design report and a video presentation. The Arkansas 4-H teams competed with students from throughout the United States as well as teams from New Zealand, Qatar, China, Puerto Rico,

Kuwait, Egypt and India.

The Wave Shockers – Jaxson A., Luke D., Kaylynn C. and Hannah N. –

finished in 8th place on the obstacle course and 15th place in the mission course within the middle school division. The team was coached by Serena McGinley, a 4-H leader and Sheridan Intermediate School fifth-grade teacher, and Brad McGinley, Grant County extension agent.



Grant County 4-H Seaperch Team Waveshockers.

The Trumpinators from Huntsville – Levi H., Colton E. and Trevor E. – finished in 16th place on the obstacle course and 14th place on the mission course within the high school division, placing 18th overall. They were coached by Darrin Henderson, Madison County extension staff chair.

The BZBot 2 team from Fayetteville – Ash W. and Ryuji A. – finished in 7th place in both the mission course and obstacle course within the open division, placing 11th overall. They were coached by Len Wood. Congratulations to all! ■



Madison County Senior SeaPerch Team Trumpinators.



# Tech Changemakers Program



The Arkansas 4-H Tech Changemakers have had a busy year reaching out to our communities to help them cross the digital divide. The team consists of 11 counties, 29 state team members, and one national team member. This group of technology-minded teens have taught more than 3,000 people. They have taught classes at 4-H events, at churches, at civic groups and at Extension Homemaker Club meetings. In short, these kids will share their technology skills anywhere and anytime.

Their classes include strong password, email basics, how to avoid scams, online job search, video conferencing and many other topics. If you would like to have the Tech Changemakers teach a class for you, please contact Cindy Dabbs Phillips at [cdphillips@uada.edu](mailto:cdphillips@uada.edu).

If your county would like to start a Tech Changemakers Program or you would like to join an existing county program, registration is open now for summer training Aug. 8-12.

Being a Tech Changemaker is a great way to use the skills you have learned in 4-H to help your community. ■



Tech Changemaker team concluded first year of grant with team building and a collaborating as the summer gets started for new grant of 2022-2023.

# FCS Professionals Hone Culinary Skills

NEAFCS hosted two professional development workshops during the AEHC state meeting.

Torrie Smith led a charcuterie board workshop on May 31 and presented a charcuterie board guide to help agents put together beautiful, edible displays of foods.

The second event was sponsored by the "At Home with UAEX" team and had 33 FCS professionals

participate. Funds from the Extension Excellence County Team Award 2020 were used to support this event at the University of Arkansas – Pulaski Tech Culinary Arts and Hospitality Management Institute. Participants attended one of three workshops offered: pasta-making, cheese-making, and French macarons). UA-PTC chefs led these workshops on June 1.

Agents present intend to share new skills back home in their counties. ■



Attendees and Extension Agents work together in cheese workshop.



Charcuterie board example from workshop that Torrie Smith led.

# Extension Offers Pond Management Workshop

More than 60 people attended a pond management workshop organized by Hempstead County agriculture agent Kim Rowe and hosted at the Southwest Research and Extension Center in Hope on May 27.

SWREC director Dr. Daniel Rivera shared his expertise on the effects of ponds on cattle health. Dr. George Selden, extension aquaculture specialist with UAPB taught aquatic weed identification and management, and Dr. Scott Jones, UAPB extension small impoundments specialist, spoke on selecting and managing fish for ponds. At the station's pond, Jones and Selden demonstrated the electrofishing survey method that is used to gather data about fish species and identify fish health issues. Additionally, extension water quality educator John Pennington spoke briefly on the Arkansas Watershed Steward Program for farmers.

Over 81% of participants indicated the information gained at this workshop was extremely useful and 76% indicated the information delivered will potentially result in a change of practice from their current pond management strategy. ■



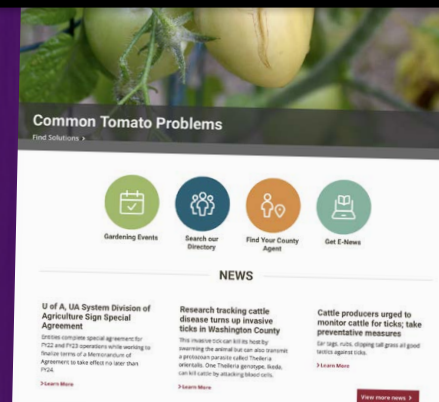
Above: Scott Jones shows off their catches and discusses the bass-crowded environment in the pond which doesn't allow for the fish to grow to a large size. The solution: go fishing! Below: Hempstead County agriculture agent Kim Rowe welcomes everyone and introduces the speakers at the pond management workshop.



## Front Page News You Can Use

Looking for a news story to use in your local paper? Look no further than the front page of [uaex.uaada.edu](http://uaex.uaada.edu). And if you click on view all news, you'll see all of our archived news stories back to 2014.

If you want to be on the email list to receive our news stories, email Mary Hightower at [mhightower@uaada.edu](mailto:mhightower@uaada.edu) and Communications will add you to the distribution list. ■





# Emergency: Vet 911 4-H Day Camp

Youth from the Ouachita District participated in the Emergency: Vet 911 Regional 4-H Day Camp held June 8 at Southern Arkansas University. Along with being treated to a day of hands-on learning about common emergencies encountered with cattle, horses and a dog, participants performed blood smears and studied the comparative anatomy of a variety of common pets with respective cadavers. Canine CPR was practiced on the Extension practice dummy, and many stuffed dogs were splinted for fractures.



Extension Veterinarian Heidi Ward leads Canine CPR class.

Extension Veterinarian Heidi Ward served as the ER vet for the day with retired Vet Tech, Kimberly George, and Ouachita District Extension Agents Jerri Dew, Kim Rowe and Shaney Hill assisting. Participants checked pulses on live cattle

and horses, took a horse's temperature (which was a steady 99.3) and lifted the horse's foot. They also learned basic holds for dogs from the size of a tiny Chihuahua to a very large Dalmatian.

The program featured enough of the good and the not so good of veterinary medicine to give the participants a pretty good idea of what Emergency:Vet 911 is really like. Although the cadavers were not pleasant for some and the heat outside was tough, all the participants left the event with a smile. ■



Emergency: Vet 911 Regional 4-H Day Camp was a great success and participants learned a lot.

## Grants and Contracts

PROJECT TITLE	AWARD AMOUNT	PI	GRANTING AGENCY
Service Order #141 - Protocol for cotton P4 trials	10,630	Ben Thrash	Bayer CropScience LP
Service Order #149 - MON88702 Baseline Monitoring(Year 2)	14,630	Ben Thrash	Bayer CropScience LP
Service Order #150 - Small-Plot Trecepta Evaluations for Yield and Efficacy in the Coastal Region	9,310	Ben Thrash	Bayer CropScience LP
Service Order #151 - ThryvOnAgronomicSystems Trial	19,950	Ben Thrash	Bayer CropScience LP
SNAP-ED Program FY23	2,148,988	Josh Phelps	Arkansas Department of Human Services
Renewable Resources Extension Act Formula Fund FFY 2022-2023	81,212	Michael Blazier	National Institute of Food & Agriculture (NIFA)
4-H Teen Star Leadership Program	2,500	Rachel Bearden	Arkansas Farm Bureau & Federation
Service Order #143 - High Load Warrant/POST/Soybean/Safety and Efficacy	11,025	Thomas R. Butts	Bayer CropScience LP
Service Order #147 - SC619/Preplant Burndown/Soybean/Safety	7,350	Thomas R. Butts	Bayer CropScience LP
Service Order #142 - SC617 Tank-Mixtures/PRE/Corn/Safety and Efficacy	6,615	Tom Barber	Bayer CropScience LP
Service Order #144 - High Load Warrant/POST/Cotton/Safety & Yield	9,702	Tom Barber	Bayer CropScience LP
Service Order #146 - SC619 CompetitiveComparisons/PRE/Soybean/Safety & Efficacy	7,350	Tom Barber	Bayer CropScience LP
Service Order #152 - XtendFlex Soybean Herbicide Recommendations	12,348	Tom Barber	Bayer CropScience LP
Southern Root-Knot Nematode in Maturity Group 4 Soybean: Characterization of Resistance Mechanisms and Breeding for Resistance	75,000	Travis Faske	Mid-South Soybean Board
<b>TOTAL AWARDS FOR MAY 2022: \$2,416,610</b>			

# Benefits Corner

BL  
13

## Health Plan Premium Updates Effective July 1

Check your July 15 paystub for announced rate increase.

## Changes to Non-Life Event Benefit Effective Dates for 7/1/2022

The University of Arkansas System has made a change concerning the effective date of non-life events benefit elections. Non-life event benefit elections include changes to 403(b) and 457(b) retirement account contributions, optional employee life insurance, dependent life insurance, optional accidental death and dismemberment insurance, and health savings accounts. Beginning July 1, benefit election changes for these non-life events will go into effect the first day of the following month. Employees can continue to make these changes in

Workday at any time, such as adjusting retirement contribution percentage, however the effective date will now be the first day of the following month.

There will be no changes to effective dates for life event changes, such as birth, adoption, marriage, or divorce.

If you have any questions or concerns, please contact your Benefits Team at [yourbenefits@uada.edu](mailto:yourbenefits@uada.edu). ■



# Personnel Changes

## Welcome Aboard:

Bethany Gammill – 4-H Program Assistant, Union County  
Cora Hicks – 4-H Program Assistant, Montgomery County  
Stephanie Prince – County Extension Agent - Family & Consumer Sciences, Lonoke County  
Hannah Hartley – Program Technician, Rice Agronomy - Crop Soil & Environmental Science, Lonoke County  
Jodi Fisher – 4-H Program Assistant, Pope County  
Christian Roofe – County Extension Agent - Family & Consumer Sciences, Newton County  
Hunter Biram – Assistant Professor - Agriculture Economics and Agriculture Business, Little Rock  
Darlene Ward – Administrative Specialist I, Clay County  
Brenda Cox – County Extension Agent - Family & Consumer Sciences, Poinsett County



## Farewell to:

Liz Russell – Community, Professional, & Economic Development - Program Associate, Little Rock  
April Thurmon – Administrative Specialist III, Union County  
David Gauvey – County Extension Agent 4-H, Lonoke County  
Wendy Lehman – EFNEP Program Assistant, Clay County  
Shirley Walker – Program Assistant - EFNEP, Chicot County  
Christina Cook – Program Assistant - EFNEP, Mississippi County  
Terri Walker – Family & Consumer Science - Administrative Specialist III, Little Rock  
Joseph Kready – Information Technology - ANR Digital Application Developer, Little Rock  
John Boyd – Crop Soil & Environmental Science - Assistant Professor, Little Rock  
Tyler Brown – Family & Consumer Science - Regional Program Associate - Obesity Reduction, Craighead County